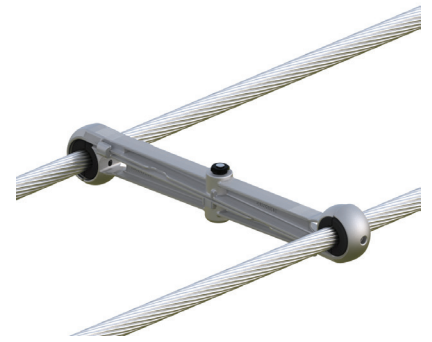




CUSHION-GRIP® TWIN SPACER

INSTALLATION INSTRUCTIONS



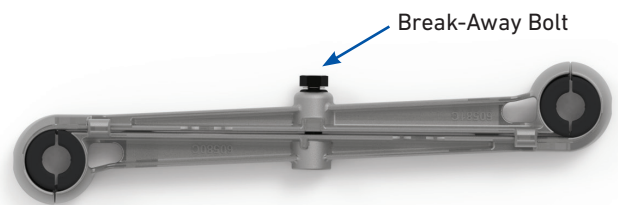
IMPORTANT SAFETY INFORMATION

READ AND COMPLETELY UNDERSTAND ALL INSTRUCTIONS BEFORE INSTALLING PRODUCT. FAILURE TO FOLLOW THESE INSTRUCTIONS MAY RESULT IN PERSONAL INJURY OR DEATH.

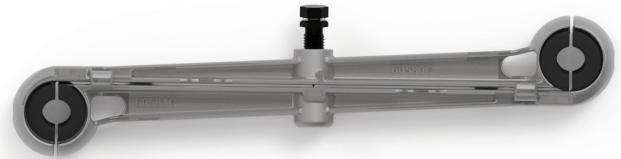
This product is intended for use by trained technicians only. This product should not be used by anyone who is not familiar with and not trained to use it. When working in the area of energized lines, extra care should be taken to prevent accidental electrical contact. Be sure to wear proper safety equipment per your company protocol. These instructions are not intended to supersede any company construction or safety standards. These instructions are offered only to illustrate safe installation for the individual. PLP products are intended for the specified application only. Do not modify this product under any circumstances. Do not reuse or reinstall any PLP product unless that capability is expressly indicated in the product's Installation Instructions. For proper performance and personal safety, be sure to select the proper PLP product before installation. PLP products are precision devices. To ensure proper performance, they should be stored in cartons under cover and handled carefully.

1

For preparation, back out break-away bolt by hand until the two frame halves are free to move.

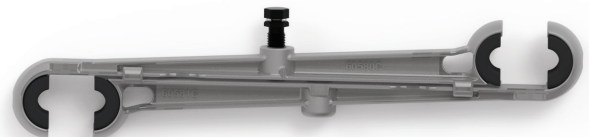


Break-Away Bolt



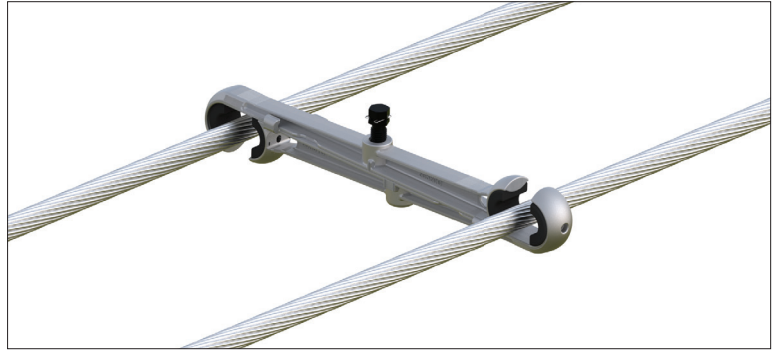
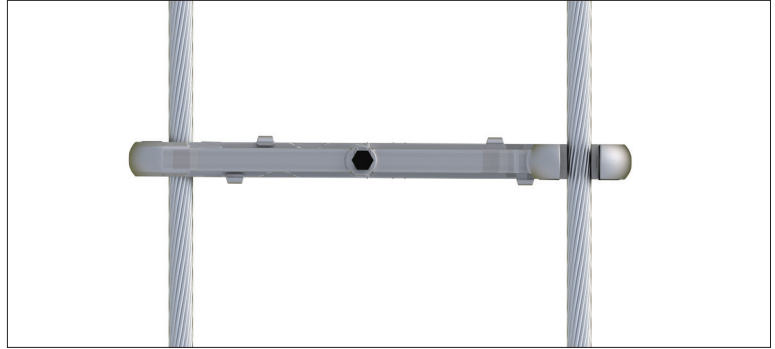
2

Slide frame halves apart enough to allow the conductor to be positioned within the elastomer inserts.



3

For placement, position the spacer so that it is perpendicular to the longitudinal axis of the conductors.

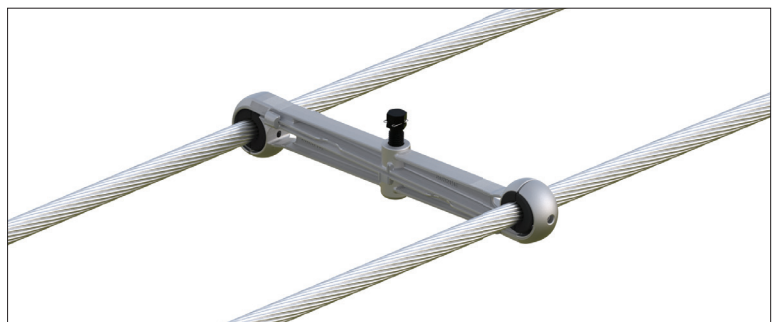
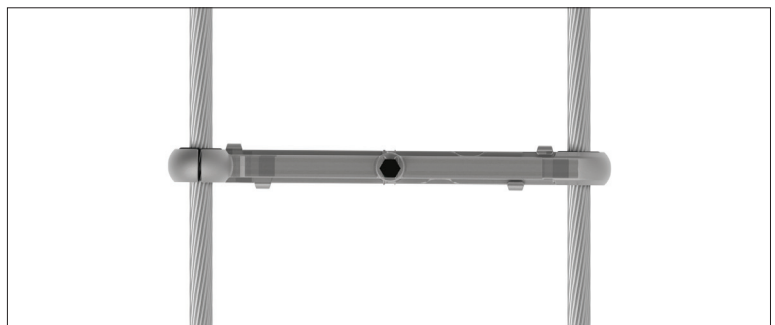
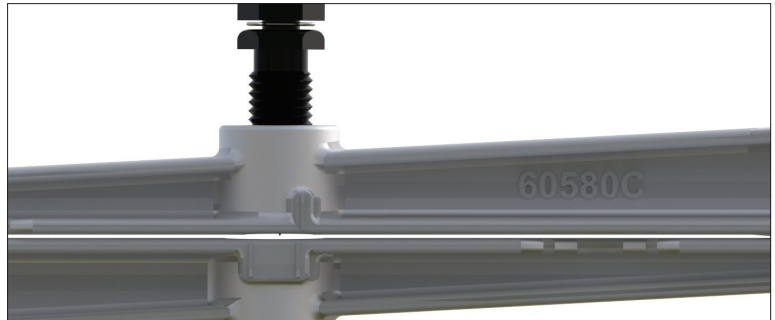


4

Slide the frame halves together as far as possible.

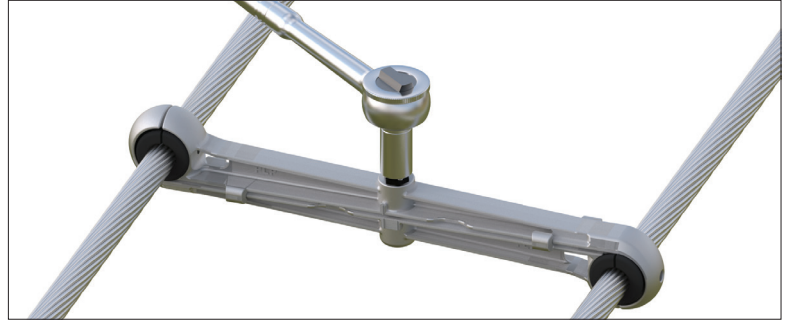
NOTE: Ensure that the single solid line on the sides of the top frame half is within the wider bar on the sides of the bottom frame half.

NOTE: Tightening the bolt slightly by hand will prevent the frame halves from moving apart.



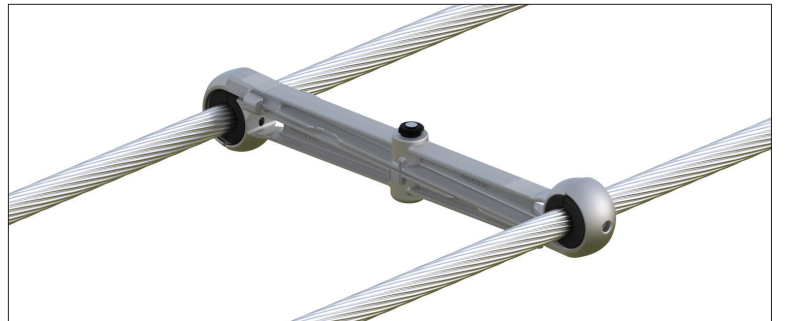
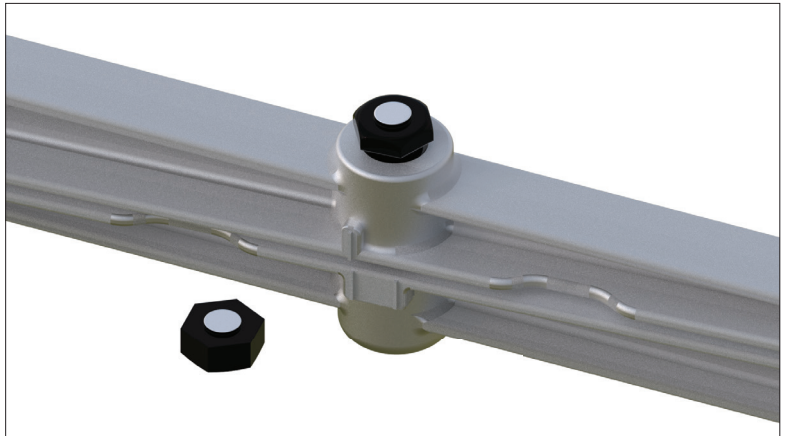
5

Tighten the bolt by hand by using a 7/8" socket.



6

Wrench until the shear head snaps off to ensure the proper torque. Properly dispose of the upper head of the bolt and the stainless steel pin.



Completed installation.



GLOBAL HEADQUARTERS
660 BETA DRIVE
CLEVELAND, OH 44143

+1 440 461 5200
INFO@PLP.COM
PLP.COM