

COYOTE® AXCESS SOLUTIONS™ CABINETS

The **COYOTE Axcess Solutions Cabinets** are pre-assembled to your exact specifications to begin splicing right out of the carton, providing a substantial labor savings. Each cabinet is made from rugged 16 gauge steel and has a durable powder-coat finish that comes in almond or black. High-density splicing and patching can be achieved in one cabinet with the craft-friendly COYOTE splice trays and integrated fiber storage. Cabinets can be ordered with adapter modules (UPC or APC) and color coded pigtailed to match your application. All multi-mode fiber grades available.

FEATURES AND BENEFITS

Wall Mount Cabinets

- Provides protected fiber splicing and connectivity
- Optional lock for inner door secures the splicing compartment
- Each cabinet may be ordered with adapter modules or pre-terminated with pigtailed to an exact specification
- Pre-terminated cabinets are 100% tested for optical insertion loss after assembly
- Installation and mounting hardware included

Rack Mount Cabinets

- Provides protected fiber splicing and connectivity
- Universal mounting bracket to fit 19" (482 mm) or 23" (584 mm) racks
- Each cabinet may be ordered with adapter modules or pre-terminated with pigtailed to an exact specification
- Pre-terminated cabinets are 100% tested for optical insertion loss after assembly
- Clear front door and access panels are removable for easy entry
- Lockable rear splicing compartment

WALL MOUNT CABINETS



Specifications: WDC2

Catalog Numbers	WDC2A ¹ and WDC2B ¹
Splice Capacity (Maximum) – Single Fusion (Standard Profile, 80806033)	24
Number of Splice Trays – 80806033	2
Adapter Port Quantity (Maximum)	24 ST, 24 SC, or 24 LC
Colors	Almond or Black
Size ²	10" H x 13" W x 3.5" D (254 x 330 x 89 mm)

¹ A for Almond or B for Black

² Outermost part of the assembly



Specifications: WDC4

Catalog Numbers	WDC4A ¹ and WDC4B ¹
Splice Capacity (Maximum) – Single Fusion (Low Profile, 8003468), Single Fusion (Standard Profile, 80806033),	48, 24
Number of Splice Trays – 8003468, 80806033	2, 2
Adapter Port Quantity (Maximum)	48 ST, 48 SC, or 48 LC
Colors	Almond or Black
Size ²	14" H x 13" W x 3.5" D (356 x 330 x 89 mm)

¹ A for Almond or B for Black

² Outermost part of the assembly



Specifications: WDC8

Catalog Numbers	WDC8A ¹ and WDC8B ¹
Splice Capacity (Maximum) – Single Fusion (Low Profile, 8001127), Single Fusion (Standard Profile, 80805514)	96, 72
Number of Splice Trays – 8001127, 80805514	4, 3
Adapter Port Quantity (Maximum)	96 ST, 96 SC, or 96 LC
Colors	Almond or Black
Size ²	17" H x 13" W x 5.5" D (432 x 330 x 140 mm)

¹ A for Almond or B for Black

² Outermost part of the assembly



Specifications: WDC12

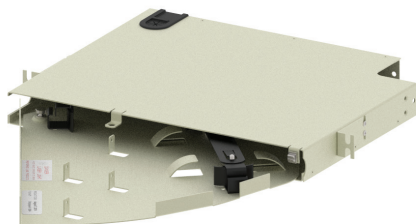
Catalog Numbers	WDC12A ¹ and WDC12B ¹
Splice Capacity (Maximum) – Single Fusion (Low Profile, 8001127), Single Fusion (Standard Profile, 80805514)	144, 144
Number of Splice Trays – 8001127, 80805514	6, 6
Adapter Port Quantity (Maximum)	144 ST, 144 SC, or 144 LC
Colors	Almond or Black
Size ²	22" H x 17" W x 6.1" D (559 x 432 x 155 mm)

¹ A for Almond or B for Black

² Outermost part of the assembly



RACK MOUNT CABINETS



Specifications: RDC2

Catalog Numbers	RDC2A ¹ and RDC2B ¹
Splice Capacity (Maximum) – Single Fusion (Low Profile, 80809958), Single Fusion (Standard Profile, 80806033)	24, 12
Number of Splice Trays – 80809958, 80806033	1, 1
Adapter Port Quantity (Maximum)	24 ST, 24 SC, or 24 LC
Rack Units	1
Colors	Almond or Black
Size ²	1.8" H x 17" W x 14" D (45 x 432 x 356 mm)

¹ A for Almond or B for Black² Outermost part of the assembly

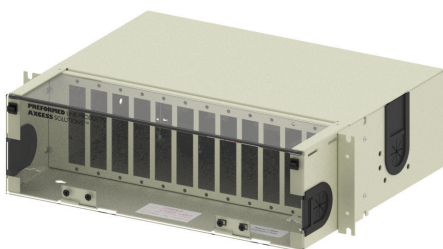
Specifications: RDC3

Catalog Numbers	RDC3A ¹ and RDC3B ¹
Splice Capacity (Maximum) – Single Fusion (Low Profile, 8001127), Single Fusion (Standard Profile, 80805514)	72, 48
Number of Splice Trays – 8001127, 80805514	3, 2
Adapter Port Quantity (Maximum)	36 ST, 36 SC, or 36 LC
Rack Units	2
Colors	Almond or Black
Size ²	3.5" H x 17" W x 14" D (89 x 432 x 356 mm)

¹ A for Almond or B for Black² Outermost part of the assembly

Specifications: RDC6

Catalog Numbers	RDC6A ¹ and RDC6B ¹
Splice Capacity (Maximum) – Single Fusion (Low Profile, 8001127), Single Fusion (Standard Profile, 80805514)	72, 48
Number of Splice Trays – 8001127, 80805514	3, 2
Adapter Port Quantity (Maximum)	72 ST, 72 SC, or 72 LC
Rack Units	2
Colors	Almond or Black
Size ²	3.5" H x 17" W x 14" D (89 x 432 x 356 mm)

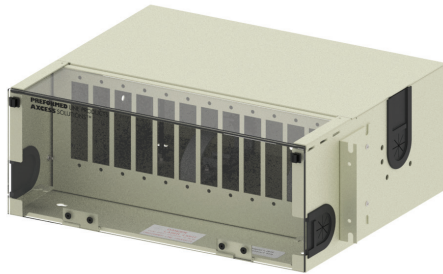
¹ A for Almond or B for Black² Outermost part of the assembly

Specifications: RDC12

Catalog Numbers	RDC12A ¹ and RDC12B ¹
Splice Capacity (Maximum) – Single Fusion (Low Profile, 8001127), Single Fusion (Standard Profile, 80805514)	144, 96
Number of Splice Trays – 8001127, 80805514	6, 4
Adapter Port Quantity (Maximum)	144 ST, 144 SC, or 144 LC
Rack Units	3
Colors	Almond or Black
Size ²	5.3" H x 17" W x 14" D (134 x 432 x 356 mm)

¹ A for Almond or B for Black² Outermost part of the assembly

RACK MOUNT CABINETS

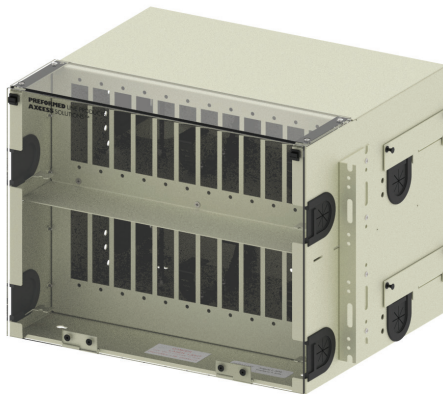


Specifications: RDC12X

Catalog Numbers	RDC12XA ¹ and RDC12XB ¹
Splice Capacity (Maximum) – Single Fusion (Low Profile, 8001127), Single Fusion (Standard Profile, 80805514)	144, 144
Number of Splice Trays – 8001127, 80805514	6, 6
Adapter Port Quantity (Maximum)	144 ST, 144 SC, or 144 LC
Rack Units	4
Colors	Almond or Black
Size ²	6.7" H x 17" W x 14" D (170 x 432 x 356 mm)

¹ A for Almond or B for Black

² Outermost part of the assembly



Specifications: RDC24

Catalog Numbers	RDC24A ¹ and RDC24B ¹
Splice Capacity (Maximum) – Single Fusion (Low Profile, 8001127), Single Fusion (Standard Profile, 80805514)	288, 240
Number of Splice Trays – 8001127, 80805514	12, 10
Adapter Port Quantity (Maximum)	288 ST, 288 SC, or 288 LC
Rack Units	8
Colors	Almond or Black
Size ²	14" H x 17" W x 14" D (356 x 432 x 356 mm)

¹ A for Almond or B for Black

² Outermost part of the assembly



Specifications: RDC36

Catalog Numbers	RDC36A ¹ and RDC36B ¹
Splice Capacity (Maximum) – Single Fusion (Low Profile, 8001127), Single Fusion (Standard Profile, 80805514)	432, 360
Number of Splice Trays – 8001127, 80805514	8, 15
Adapter Port Quantity (Maximum)	432 ST, 432 SC, or 432 LC
Rack Units	12
Colors	Almond or Black
Size ²	21" H x 17" W x 14" D (533 x 432 x 356 mm)

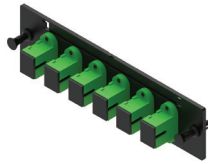
¹ A for Almond or B for Black

² Outermost part of the assembly

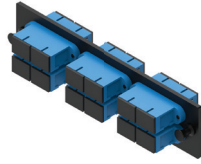
OPTICAL COMPONENTS AND ACCESSORIES



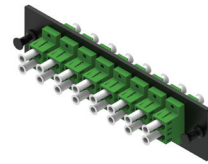
6-Port ST Adapter Module



6-Port SC/APC Adapter Module



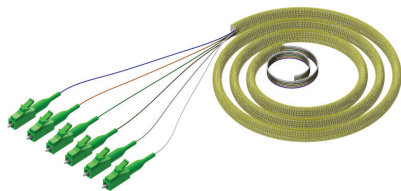
12-Port SC/UPC Adapter Module



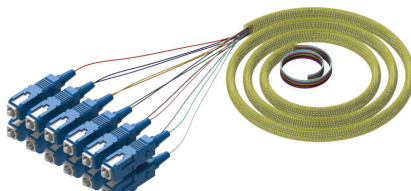
16-Port LC/APC Adapter Module

COYOTE Adapter Modules

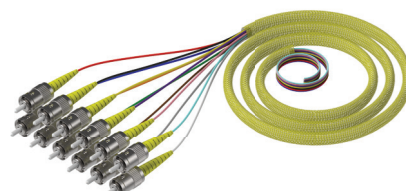
Catalog Number	Description
6SCAPC	Adapter Module Kit – Includes (1) 6-Port SC/APC Adapter Module
8SCAPC	Adapter Module Kit – Includes (1) 8-Port SC/APC Adapter Module
12SMDSCA	Adapter Module Kit – Includes (1) 12-Port SC/APC Adapter Module
6SMSC	Adapter Module Kit – Includes (1) 6-Port SC/UPC Adapter Module
8SMSC	Adapter Module Kit – Includes (1) 8-Port SC/UPC Adapter Module
12SMDSC	Adapter Module Kit – Includes (1) 12-Port SC/UPC Adapter Module
12SMLCA	Adapter Module Kit – Includes (1) 12-Port LC/APC Adapter Module
16SMLCA	Adapter Module Kit – Includes (1) 16-Port LC/APC Adapter Module
24LCAPC	Adapter Module Kit – Includes (1) 24-Port LC/APC Adapter Module
6SMLC	Adapter Module Kit – Includes (1) 6-Port LC/UPC Adapter Module
12SMLC	Adapter Module Kit – Includes (1) 12-Port LC/UPC Adapter Module
16SMLC	Adapter Module Kit – Includes (1) 16-Port LC/UPC Adapter Module
24SMLC	Adapter Module Kit – Includes (1) 24-Port LC/UPC Adapter Module
6SMST	Adapter Module Kit – Includes (1) 6-Port ST/UPC Adapter Module
8SMST	Adapter Module Kit – Includes (1) 8-Port ST/UPC Adapter Module
12SMST	Adapter Module Kit – Includes (1) 12-Port ST/UPC Adapter Module



6 Fiber LC/APC Pigtail Cable Assembly



12 Fiber SC/UPC Pigtail Cable Assembly



12 Fiber ST Pigtail Cable Assembly

COYOTE Fiber Pigtail Cable Assemblies

Catalog Number	Description
P6SCA3	3 Meter Pigtail Cable Assembly – Includes (6) Bundled SC/APC 900 µm Pigtails in Sleeving
P12SCA3	3 Meter Pigtail Cable Assembly – Includes (12) Bundled SC/APC 900 µm Pigtails in Sleeving
P6SCU3	3 Meter Pigtail Cable Assembly – Includes (6) Bundled SC/UPC 900 µm Pigtails in Sleeving
P12SCU3	3 Meter Pigtail Cable Assembly – Includes (12) Bundled SC/UPC 900 µm Pigtails in Sleeving
P6ST3	3 Meter Pigtail Cable Assembly – Includes (6) Bundled ST 900 µm Pigtails in Sleeving
P12ST3	3 Meter Pigtail Cable Assembly – Includes (12) Bundled ST 900 µm Pigtails in Sleeving
P6LCA3	3 Meter Pigtail Cable Assembly – Includes (6) Bundled LC/APC 900 µm Pigtails in Sleeving
P12LCA3	3 Meter Pigtail Cable Assembly – Includes (12) Bundled LC/APC 900 µm Pigtails in Sleeving
P6LC3	3 Meter Pigtail Cable Assembly – Includes (6) Bundled LC/UPC 900 µm Pigtails in Sleeving
P12LC3	3 Meter Pigtail Cable Assembly – Includes (12) Bundled LC/UPC 900 µm Pigtails in Sleeving

All multi-mode fiber grades are available.

OPTICAL COMPONENTS AND ACCESSORIES

Accessories

Catalog Number	Description
80807701	Splice Tray, COYOTE Legacy Short, Low Profile, 12 CT., Single Fusion
80806033	Splice Tray, COYOTE Legacy Short, Standard Profile, 12 CT., Single Fusion
8003468	Splice Tray, COYOTE Legacy Short, Standard Profile, 24 CT., Single Fusion
8001127	Splice Tray, COYOTE Legacy Long, Low Profile, 36 ¹ CT., Single Fusion
80805514	Splice Tray, COYOTE Legacy Long, Standard Profile, 36 ¹ CT., Single Fusion
80805515	Splice Tray, COYOTE Legacy Long, Deep Profile, 144 CT., Mass Fusion
800014149B	Rodent Protection Kit for RDC3 and RDC6 – Requires Grommet Port Adapter
800014150B	Rodent Protection Kit for RDC12 – Requires Grommet Port Adapter
80812784B	Rodent Protection Kit for WDC2 and WDC4 – Requires Grommet Port Adapter
80812785B	Rodent Protection Kit for WDC8 – Requires Grommet Port Adapter
8003827	1-Hole Grommet Port Adapter 0.40" – 0.60" (10.2 mm – 15.2 mm)
8003826	1-Hole Grommet Port Adapter 0.60" – 0.825" (15.2 mm – 21.0 mm)
8003825	1-Hole Grommet Port Adapter 0.825" – 1.00" (21.0 mm – 25.4 mm)
8003828	2-Hole Grommet Port Adapter 0.275" – 0.500" (7.0 mm – 12.7 mm)
8003812	4-Hole Grommet Port Adapter 0.120" – 0.275" (3.0 mm – 7.0 mm)
8003818	8-Hole Grommet Port Adapter 0.120" – 0.200" (3.0 mm – 5.1 mm)
80808618	Stepped Grommet Kit 0.070" – 1.00" (1.8 mm – 25.4 mm)

¹24 CT. in pre-terminated cabinets

ORDERING INFORMATION

COYOTE Access Solutions Pre-Terminated Cabinets

X **X** **X** **X** **X**
 (Section 1) (Section 2) (Section 3) (Section 4) (Section 5)

Catalog Number Example: RDC24A96SCU3

Section 1

Cabinet Selection (Select 1)	Description
WDC2	Wall Mount Cabinet up to 24 Fiber Connections and Splices
WDC4	Wall Mount Cabinet up to 48 Fiber Connections and Splices
WDC8	Wall Mount Cabinet up to 96 Fiber Connections and Splices
WDC12	Wall Mount Cabinet up to 144 Fiber Connections and Splices
RDC2	Rack Mount Cabinet up to 12 Fiber Connections and Splices
RDC3	Rack Mount Cabinet up to 36 Fiber Connections and Splices
RDC6	Rack Mount Cabinet up to 72 Fiber Connections and Splices
RDC12	Rack Mount Cabinet up to 144 Fiber Connections and Splices
RDC12X	Rack Mount Cabinet up to 144 Fiber Connections and Splices
RDC24	Rack Mount Cabinet up to 288 Fiber Connections and Splices
RDC36	Rack Mount Cabinet up to 432 Fiber Connections and Splices

Section 2

Color Options (Select 1)	
A	Almond
B	Black

Section 3

Adapter Port Quantity
0 to 432

Section 4

Connector Type (Select 1)	
SCA	SC/APC
SCU	SC/UPC
LCA	LC/APC
LCU	LC/UPC
ST	ST/UPC

Section 5

Pigtail Length (Select 1)	
Blank	No Pigtails
3	3 meters

NOTE: Pre-terminated means factory assembled with all optical ports labeled and tested for insertion loss after assembly