

## COYOTE® STP PRO TERMINAL CLOSURE

### STP PRO SERIES CLOSURE

Utilizing a similar design to PLP's original COYOTE STP Closure, the **STP Pro Terminal Closure** is a compact drop distribution closure that is designed to provide maximum adaptability to various splicing and connectivity applications. The STP Pro Terminal Closure easily accommodates unique splicing needs with interchangeable organizers supporting diverse connectivity requirements, up to nine OptiTap® adapter ports, and a universal cable restraint system. The robust latch system, conical grommet design, and integrated over-molded cover enable quick re-entry that is designed to provide a secure seal over a wide range of cable profiles.

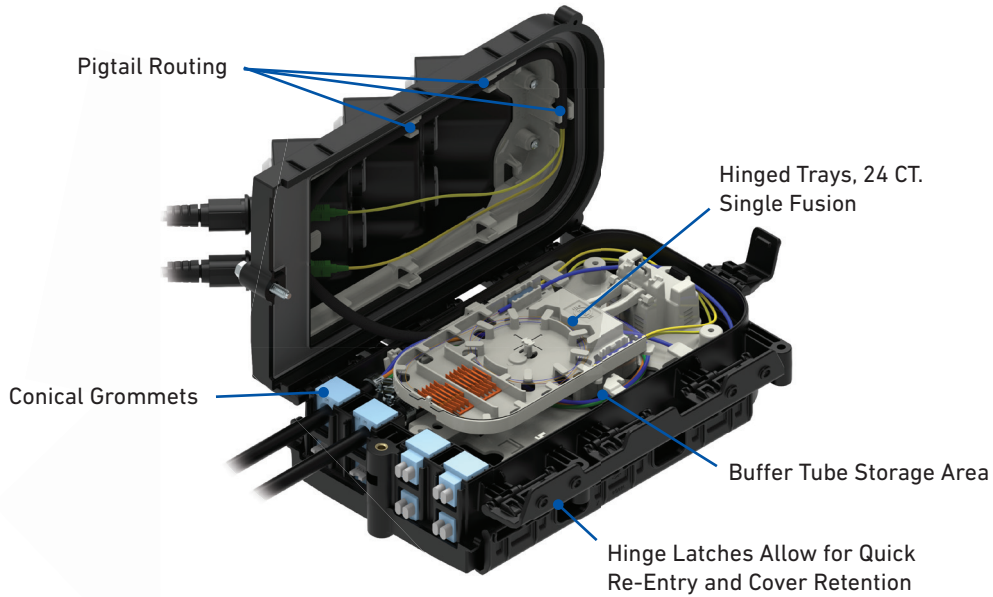
### FEATURES AND BENEFITS

- The dual chamber design of the STP-XL provides independent access to both the splice/slack storage chamber and the drop connection chamber, whereas the single chamber STP-L provides a more compact option
- Integrated over-molded cover options are quickly assembled and removed from the closure
- Robust latch system and unique grommet design enable quick re-entry and re-use
- Universal cable restraint system works across the entire STP Pro platform
- Various base designs allow for a multitude of combinations of feed and drop cables in a compact design
- Conical grommet options support a wide range of cable diameters
- Available in a 6-Port or 9-Port OptiTap cover
- Designed to permit field installation and removal of hardened adapters
- Provided with SC/APC pigtail kits
- Screws allow the cover to be attached to the closure's side latches for a hinged cover or to prevent tampering
- Constructed from a high-strength, UV-stabilized, flame-retardant material
- Designed and tested in accordance to Telcordia® GR-771-CORE Buried, Underground, IP-68 Rated Requirements



## COYOTE® STP PRO BASE AND COVER OPTIONS

The **STP Pro Series** shares the same cable restraint system, grommets, organizers, splice trays, and covers between the various family sizes and base configurations. This allows for a simple switch for installers when using the different closures in this family line.



Standard Cover



Deep Cover  
for Max Capacity  
Splicing Applications

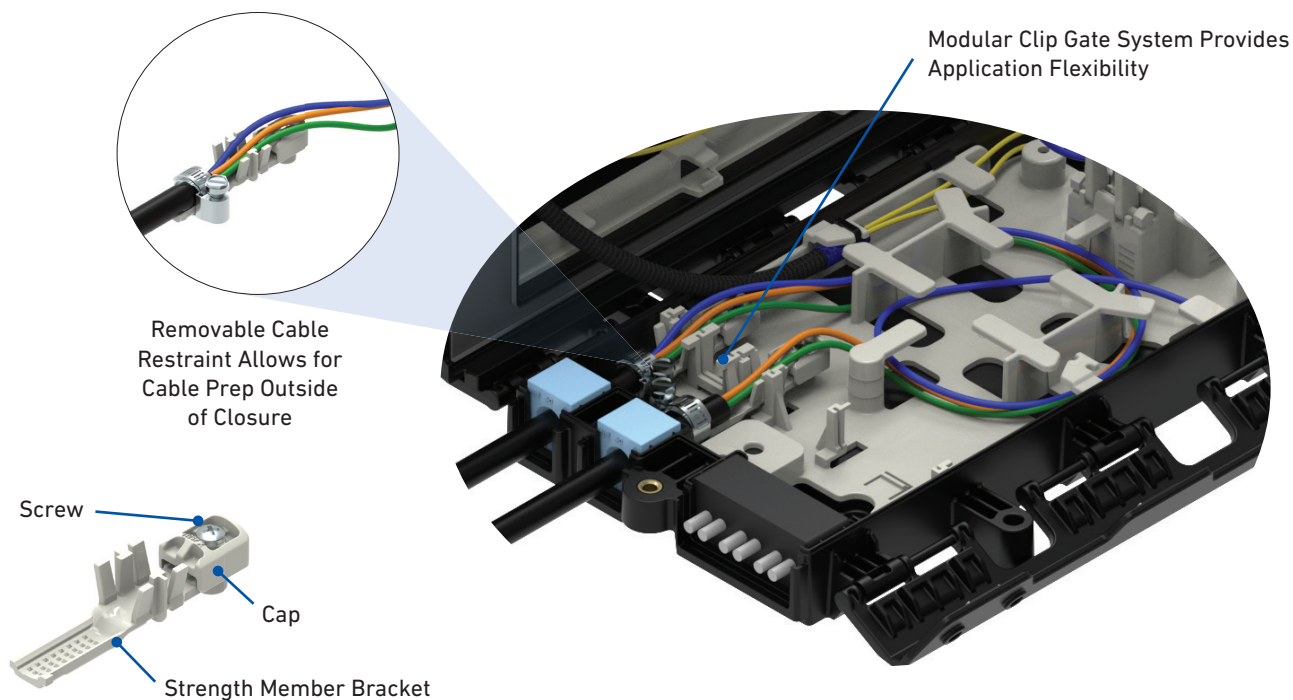


Terminal Cover  
for Hardened  
Connector Applications

OptiTap® is a registered trademark of Corning Cable Systems.

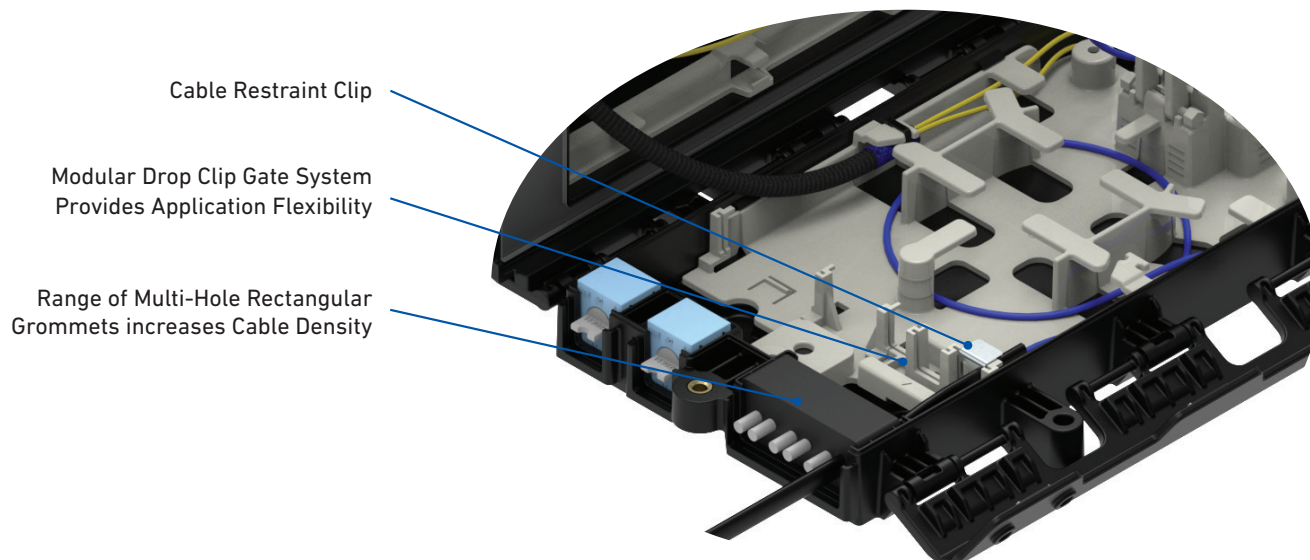
## COYOTE® STP PRO FEED/BRANCH CABLE RETENTION

The Feed/Branch Cable retention can be installed outside the closure footprint to allow easier access and workability. Once completed and the clip gate is installed, the cable restraint bracket can be easily pressed into the clip gate for the appropriate cable retention.



## COYOTE® STP PRO DROP CABLE RETENTION

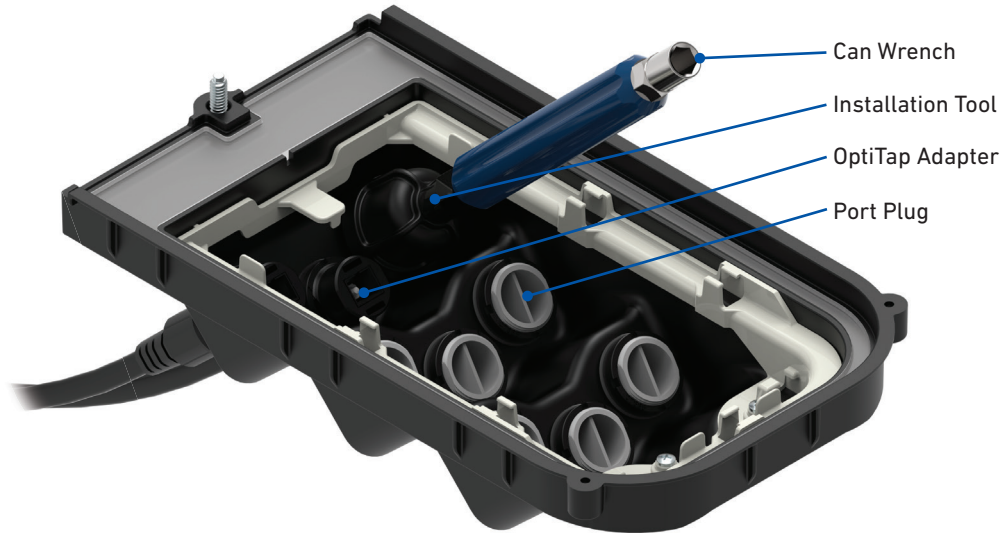
The Modular Drop Clip Gate system allows for a wide range of drop cable profiles to be retained. Once the Drop Clip Gate is installed, simply press down on the appropriate Cable Restraint Clip to retain the drop cable being used. This system works with round, flat, and ROC™ Drop Cables.





## ADDING OR REPLACING OPTITAP® ADAPTERS

The STP PRO Terminal Closure can be ordered with differing numbers of OptiTap adapters and plugs. Additional hardened adapters can be ordered and added as needed. Remove the existing plug using the installation tool and can wrench. Add an OptiTap adapter or replace a damaged adapter and re-tighten with the installation tool.



## DROP CABLE INSTALLATION

Drop cables can be easily installed without having to re-enter the closure. Align the arrow of the connector with the notch of the adapter and insert the connector. Rotate the threaded sleeve of the connector until it is secured into the adapter.



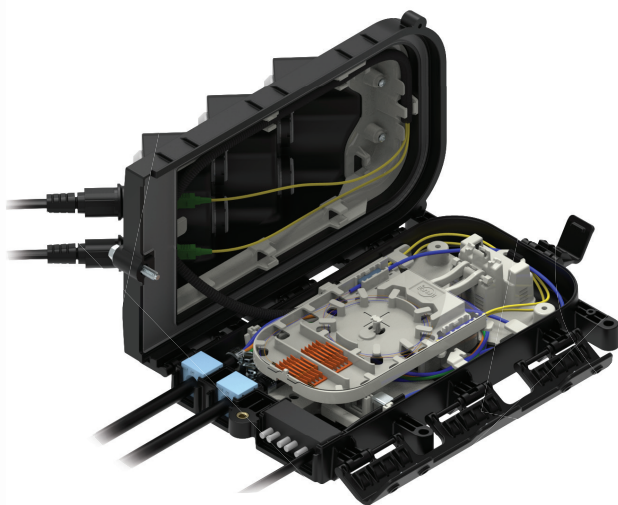
## COYOTE® STP-LT

### Specifications

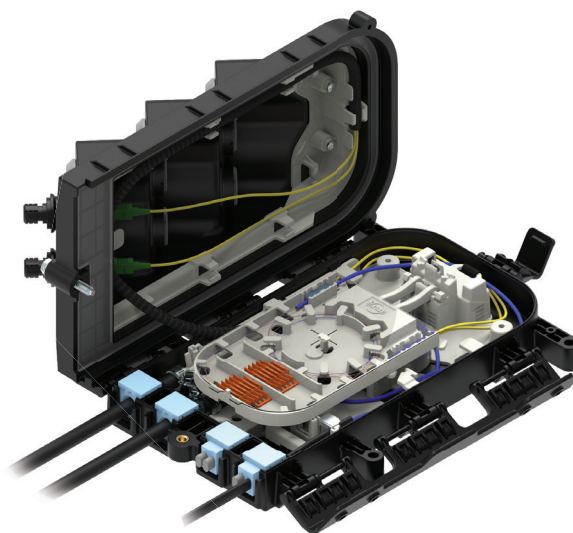
Catalog Number	STP-L3T-XP-24-001 through STP-L4T-XP-24-003
Cable Ports <sup>1</sup>	3 or 4
Cable Diameters	0.170" - 0.550" (4.3 - 14 mm), Round, Flat, and ROC™ Drop Cables
Configuration	Butt
Application	Direct Buried, Below Grade, Pole/Wall, and Aerial
Ingress Protection	In accordance to Telcordia® GR-771-CORE, Buried, Underground; IP-68
Size	11.8" L x 7.8" W x 4.1" H <sup>2</sup> (300 mm x 198 mm x 104 mm)

<sup>1</sup> Multi-hole grommets allow for more than one cable to enter each cable port.

### STP-LT BASE OPTIONS



STP-L3T



STP-L4T





## COYOTE® STP-LT CLOSURE KITS

Closure kits below are shown with **-XP**, where the **X** will be the number of OptiTaps® that should come pre-installed in the cover (up to 9 OptiTaps can be installed). If the requested value is 0-6, then the 6-Port Terminal Cover will be used. If the requested number is 7-9, then the 9-port Terminal Cover will be used. The remainder of the ports will be loaded with plugs. If you would like to use a 9-port cover with less than 7 OptiTaps, contact PLP.

### COYOTE STP-LT 3-Port Base Closure Kits

Catalog Number	Description
STP-L3T-XP-24-001	COYOTE STP-L Closure with 3-Port Base – Includes (1) Terminal Cover, (2) Small Conical Grommets 0.17" - 0.40" (4.3 - 10.2 mm), (2) Large Conical Grommets 0.40" - 0.55" (10.2 - 14 mm), (1) 12-Hole Drop Grommet 0.193 - 0.201" (4.9 - 5.1 mm), and (1) 24 Ct. Splice Tray
STP-L3T-XP-24-002	COYOTE STP-L Closure with 3-Port Base – Includes (1) Terminal Cover, (2) Small Conical Grommets 0.17" - 0.40" (4.3 - 10.2 mm), (2) Large Conical Grommets 0.40" - 0.55" (10.2 - 14 mm), (1) 6-Hole Flat Drop Grommet, and (1) 24 Ct. Splice Tray

All kits include (1) COYOTE STP-LT 3-Port Base Assembly with Universal Organizer, (1) Cover, (2) Grommet Kits, Cable Restraint Hardware, and SC/APC 2 mm Yellow Jacketed Pigtails. Hanger Brackets are sold separately.

### COYOTE STP-LT 4-Port Base Closure Kits

Catalog Number	Description
STP-L4T-XP-24-001	COYOTE STP-L Closure with 4-Port Base – Includes (1) Terminal Cover, (2) Small Conical Grommets 0.17" - 0.40" (4.3 - 10.2 mm), (2) Large Conical Grommets 0.40" - 0.55" (10.2 - 14 mm), and (1) 24 Ct. Splice Tray
STP-L4T-XP-24-002	COYOTE STP-L Closure with 4-Port Base – Includes (1) Terminal Cover, (2) Small Conical Grommets 0.17" - 0.40" (4.3 - 10.2 mm), (2) Large Conical Grommets 0.40" - 0.55" (10.2 - 14 mm), (2) 2-Hole Flat Drop Grommets, and (1) 24 Ct. Splice Tray
STP-L4T-XP-24-003	COYOTE STP-L Closure with 4-Port Base – Includes (1) Terminal Cover, (2) Small Conical Grommets 0.17" - 0.40" (4.3 - 10.2 mm), (2) Large Conical Grommets 0.40" - 0.55" (10.2 - 14 mm), (2) 2-Hole ROC™ Drop Grommets, and (1) 24 Ct. Splice Tray

All kits include (1) COYOTE STP-L 4-Port Base Assembly with Universal Organizer, (1) Cover, Grommet Kit(s), Cable Restraint Hardware and SC/APC 2mm Yellow Jacketed Pigtails. Hanger Brackets are sold separately.

## COYOTE® STP-XLT

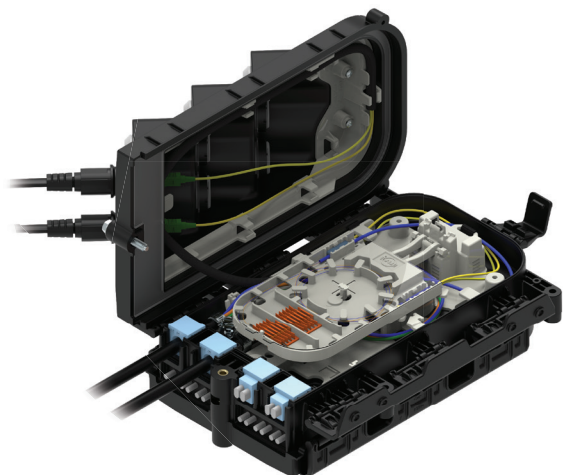
### Specifications

Catalog Number	STP-XL6T-XP-48-001 through STP-XL8T-XP-96-003
Cable Ports <sup>1</sup>	6 or 8
Cable Diameters	0.170" - 0.550" (4.3 - 14 mm), Round, Flat, and ROC™ Drop Cables
Configuration	Butt
Application	Direct Buried, Below Grade, Pole/Wall, and Aerial
Ingress Protection	In accordance to Telcordia® GR-771-CORE, Buried, Underground; IP-68
Size	11.8" L x 7.8" W x 6.2" H <sup>2</sup> (300 mm x 198 mm x 158 mm)

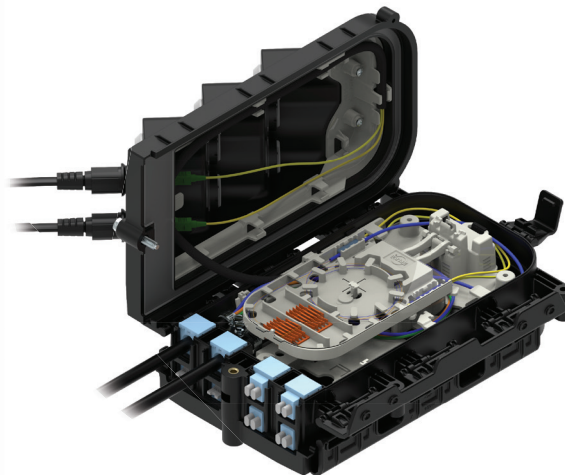
<sup>1</sup> Multi-hole grommets allow for more than one cable to enter each cable port.

<sup>2</sup> Outermost part of the assembly; using a shallow cover and terminal cover.

### STP-XLT BASE OPTIONS



STP-XL6T



STP-XL8T





## COYOTE® STP-XLT CLOSURE KITS

Closure kits below are shown with **-XP**, where the **X** will be the number of OptiTaps® that should come pre-installed in the cover (up to 9 OptiTaps can be installed). If the requested value is 1-6, then the 6-Port Terminal Cover will be used. If the requested number is 7-9, then the 9-port Terminal Cover will be used. The remainder of the ports will be loaded with plugs. If you would like to use a 9-port cover with less than 7 OptiTaps contact PLP.

### COYOTE STP-XLT 6-Port Base Closure Kits

Catalog Number	Description
STP-XL6T-XP-48-001	COYOTE STP-XL Closure with 6-Port Base – Includes (1) Terminal Cover, (1) Shallow Cover, (4) Small Conical Grommets 0.17" - 0.40" (4.3 - 10.2 mm), (2) Large Conical Grommets 0.40" - 0.55" (10.2 - 14 mm), (2) 12-Hole Drop Grommets 0.193" - 0.201" (4.9 - 5.1 mm), and (2) 24 Ct. Splice Trays
STP-XL6T-XP-48-002	COYOTE STP-XL Closure with 6-Port Base – Includes (1) Terminal Cover, (1) Shallow Cover, (4) Small Conical Grommets 0.17" - 0.40" (4.3 - 10.2 mm), (2) Large Conical Grommets 0.40" - 0.55" (10.2 - 14 mm), (2) 6-Hole Flat Drop Grommets, and (2) 24 Ct. Splice Trays
STP-XL6T-XP-96-001	COYOTE STP-XL Closure with 6-Port Base – Includes (1) Terminal Cover, (1) Deep Cover, (4) Small Conical Grommets 0.17" - 0.40" (4.3 - 10.2 mm), (2) Large Conical Grommets 0.40" - 0.55" (10.2 - 14 mm), (2) 12-Hole Drop Grommets 0.193" - 0.201" (4.9 - 5.1 mm), and (4) 24 Ct. Splice Trays
STP-XL6T-XP-96-002	COYOTE STP-XL Closure with 6-Port Base – Includes (1) Terminal Cover, (1) Deep Cover, (4) Small Conical Grommets 0.17" - 0.40" (4.3 - 10.2 mm), (2) Large Conical Grommets 0.40" - 0.55" (10.2 - 14 mm), (2) 6-Hole Flat Drop Grommets, and (4) 24 Ct. Splice Trays

All kits include (1) COYOTE STP-XLT 6-Port Base Assembly with Universal Organizers, (2) Covers, (8) Grommets, Cable Restraint Hardware, and SC/APC 2 mm Yellow Jacketed Pigtailed. Hanger Brackets are sold separately.

### COYOTE STP-XLT 8-Port Base Closure Kits

Catalog Number	Description
STP-XL8T-XP-48-002	COYOTE STP-XL Closure with 8-Port Base – Includes (1) Terminal Cover, (1) Shallow Cover, (4) Small Conical Grommets 0.17" - 0.40" (4.3 - 10.2 mm), (2) Large Conical Grommets 0.40" - 0.55" (10.2 - 14 mm), (4) 2-Hole Flat Drop Grommets, and (2) 24 Ct. Splice Trays
STP-XL8T-XP-48-003	COYOTE STP-XL Closure with 8-Port Base – Includes (1) Terminal Cover, (1) Shallow Cover, (4) Small Conical Grommets 0.17" - 0.40" (4.3 - 10.2 mm), (2) Large Conical Grommets 0.40" - 0.55" (10.2 - 14mm), (4) 2-Hole ROC Drop Grommets, and (2) 24 Ct. Splice Trays
STP-XL8T-XP-96-002	COYOTE STP-XL Closure with 8-Port Base – Includes (1) Terminal Cover, (1) Deep Cover, (4) Small Conical Grommets 0.17" - 0.40" (4.3 - 10.2 mm), (2) Large Conical Grommets 0.40" - 0.55" (10.2 - 14 mm), (4) 2-Hole Flat Drop Grommets, and (4) 24 Ct. Splice Trays
STP-XL8T-XP-96-003	COYOTE STP-XL Closure with 8-Port Base – Includes (1) Terminal Cover, (1) Deep Cover, (4) Small Conical Grommets 0.17" - 0.40" (4.3 - 10.2 mm), (2) Large Conical Grommets 0.40" - 0.55" (10.2 - 14 mm), (4) 2-Hole ROC™ Drop Grommets, and (4) 24 Ct. Splice Trays

All kits include (1) COYOTE STP-XL 8-Port Base Assembly with Universal Organizers, (2) Covers, (10) Grommets, Cable Restraint Hardware, and SC/APC 2 mm Yellow Jacketed Pigtailed. Hanger Brackets are sold separately.

## COYOTE® STP PRO SERIES ACCESSORIES

### Accessory Kits for COYOTE STP Pro Series

Catalog Number	Description
STPXL-TK-002	Splice Tray Kit – Includes (1) Splice Tray, (1) Cover, (2) 12 Ct. Single Fusion Splice Blocks, (2) LITE-GRIP® Retention Sleeves for Microtube, (2) LITE-GRIP Retention Sleeves for Buffer Tubes, (2) LITE-GRIP Retention Sleeves for Micro Buffer Tubes, (1) Felt Strip, and (12) Cable Ties
STPXL-EK-001	Splice Tray Extension Kit – Includes (1) Deep Cover, and (1) Expansion Piece
80813747	Deep Cover Kit - Includes (1) Deep Cover and Silicone Lubricant
8004153	Splice Block Kit - Includes (6) 48 Ct. Mass Fusion or Splitter Splice Blocks, Mustard
80814575	Cover Tether Kit

## COYOTE® STP PRO TERMINAL CLOSURE ACCESSORIES

### Terminal Accessory Kits for COYOTE STP Pro Series

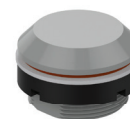
Catalog Number	Description
8003993	Heat Shrink Splice Protector Kit – Includes (12) 40 mm Mass Fusion
80808187	Heat Shrink Splice Protector Kit – Includes (12) 40 mm Single Fusion
8003509	Heat Shrink Splice Protector Kit – Includes (12) 60 mm Single Fusion
80807972	Hardened Adapter Installation Tool
8003715	OptiTap® Adapter Kit – Includes (1) OptiTap Adapter and (1) Installation Tool
8004115	Bulk Pack of OptiTap Adapters – Includes (10) OptiTap Adapters
8003724	Port Plug Kit – Includes (1) Port Plug and (1) Installation Tool
8004060	Bulk Pack of Port Plugs – Includes (10) Port Plugs
COYTRM-2PK-SCA-SB	Pigtail Kit - Includes (2) SC/APC 2 mm Jacketed Pigtails with Short Boot Connectors
COYTRM-3PK-SCA-SB	Pigtail Kit - Includes (3) SC/APC 2 mm Jacketed Pigtails with Short Boot Connectors
COYTRM-4PK-SCA-SB	Pigtail Kit - Includes (4) SC/APC 2 mm Jacketed Pigtails with Short Boot Connectors



OptiTap Adapter



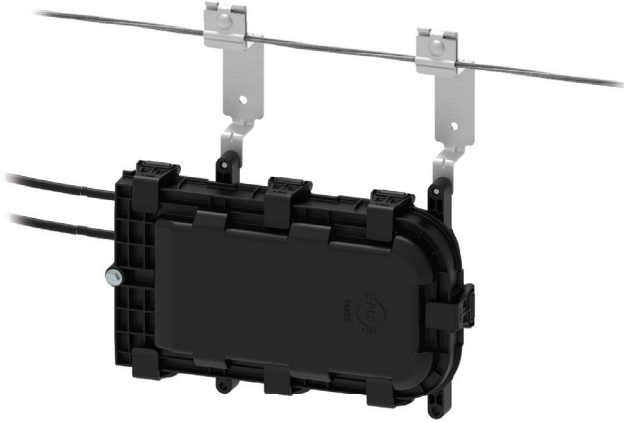
Hardened Adapter  
Installation Tool



Port Plug



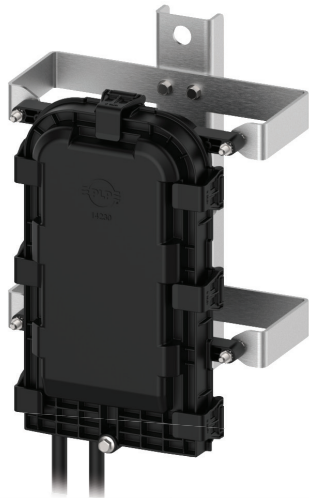
## COYOTE® STP PRO SERIES MOUNTING BRACKETS



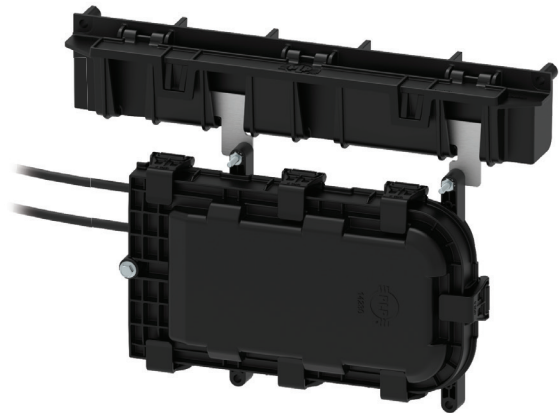
Catalog Number:  
7400033  
Aerial Mounting Bracket Kit -  
Strand Applications



Catalog Number:  
8004214  
Pole/Wall Mounting Bracket with  
Integrated Slack Storage



Catalog Number:  
8004248  
Pole/Wall Mounting Bracket



Catalog Number:  
80061735  
Manhole Mounting Bracket





GLOBAL HEADQUARTERS 660 BETA DRIVE CLEVELAND, OHIO 44143  
+1 440 461 5200 [INFO@PLP.COM](mailto:INFO@PLP.COM) [PLP.COM](http://PLP.COM)

© 2026 Preformed Line Products Printed in U.S.A. CO-SS-1357 01.26.00