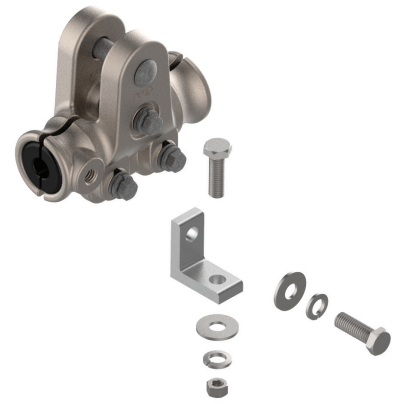




90° GROUNDING BRACKET KIT FOR FIBERLIGN® EZ CUSHION CLAMP

INSTALLATION INSTRUCTIONS

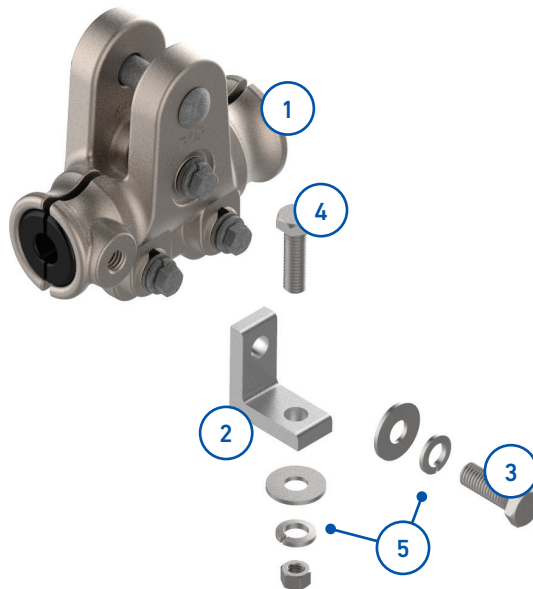


IMPORTANT SAFETY INFORMATION

READ AND COMPLETELY UNDERSTAND ALL INSTRUCTIONS BEFORE INSTALLING PRODUCT. FAILURE TO FOLLOW THESE INSTRUCTIONS MAY RESULT IN PERSONAL INJURY OR DEATH.

This product is intended for use by trained technicians only. This product should not be used by anyone who is not familiar with and not trained to use it. When working in the area of energized lines, extra care should be taken to prevent accidental electrical contact. Be sure to wear proper safety equipment per your company protocol. These instructions are not intended to supersede any company construction or safety standards. These instructions are offered only to illustrate safe installation for the individual. PLP products are intended for the specified application only. Do not modify this product under any circumstances. Do not reuse or reinstall any PLP product unless that capability is expressly indicated in the product's Installation Instructions. For proper performance and personal safety, be sure to select the proper PLP product before installation. PLP products are precision devices. To ensure proper performance, they should be stored in cartons under cover and handled carefully.

PACKAGE COMPONENTS

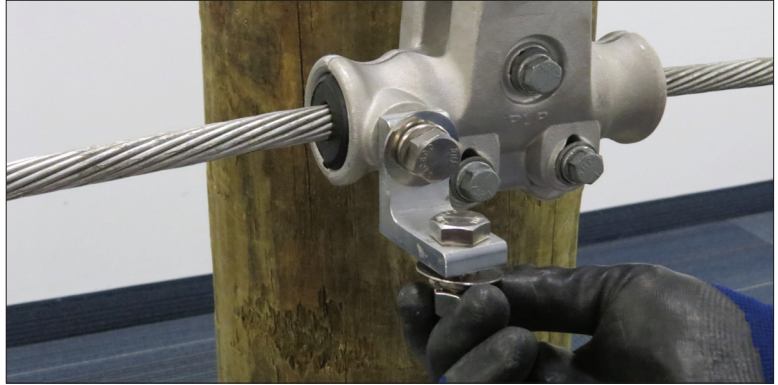


1. EZ Cushion Clamp for OPGW (not included, ordered separately)

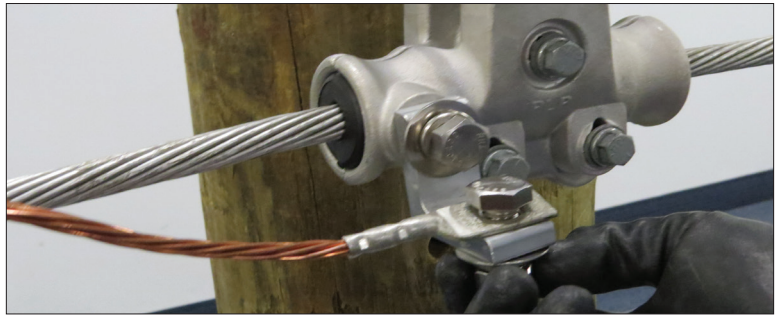
90° Grounding Bracket Kit:

- 2. 90° Grounding Bracket (1)
- 3. 1/2" - 13 x 1" 18-8 SS Bolt (1)
- 4. 1/2" - 13 x 1-1/2" 18-8 SS Bolt (1)
- 5. 1/2" 18-8 SS Flat Washer (2), 1/2" 18-8 SS Lock Washer (2), 1/2" 18-8 SS Nut (1)

- 1 Remove 1/2" - 13 x 1-1/2" bolt, flat washer, lock washer, and nut from Grounding Bracket.



- 2 Secure terminal of Copper Ground Wire (pictured, **Catalog Number 710010016**) with 1/2" - 13 x 1-1/2" SS bolt.



- 3 Tighten 1/2" Bolt with flat washer, lock washer, and nut until lock washer is flat. Do not exceed torque value of 30 ft-lb.



- 4 Tighten 1/2" - 13 x 1" Bolt with flat washer and lock washer until lock washer is flat. Do not exceed torque value of 30 ft-lb.

