



FIBERLIGN® DOWNLEAD CUSHION WITH LATTICE TOWER CLAMP KIT

INSTALLATION INSTRUCTIONS

IMPORTANT SAFETY INFORMATION

READ AND COMPLETELY UNDERSTAND ALL INSTRUCTIONS BEFORE INSTALLING PRODUCT. FAILURE TO FOLLOW THESE INSTRUCTIONS MAY RESULT IN PERSONAL INJURY OR DEATH.

This product is intended for use by trained technicians only. This product should not be used by anyone who is not familiar with and not trained to use it. When working in the area of energized lines, extra care should be taken to prevent accidental electrical contact. Be sure to wear proper safety equipment per your company protocol. These instructions are not intended to supersede any company construction or safety standards. These instructions are offered only to illustrate safe installation for the individual. PLP products are intended for the specified application only. Do not modify this product under any circumstances. Do not reuse or reinstall any PLP product unless that capability is expressly indicated in the product's Installation Instructions. For proper performance and personal safety, be sure to select the proper PLP product before installation. PLP products are precision devices. To ensure proper performance, they should be stored in cartons under cover and handled carefully.

PACKAGE COMPONENTS



1. Download Cushions Halves (Urethane or Aluminum)
2. Lattice Tower Clamp Kit
(Catalog Numbers: LTC-1, LTC-2, 7000401 or 7000402)

Tools Required:

- Socket Wrench or Torque Wrench with 15/16" socket
- Adjustable Wrench

INSTALLATION GUIDELINES

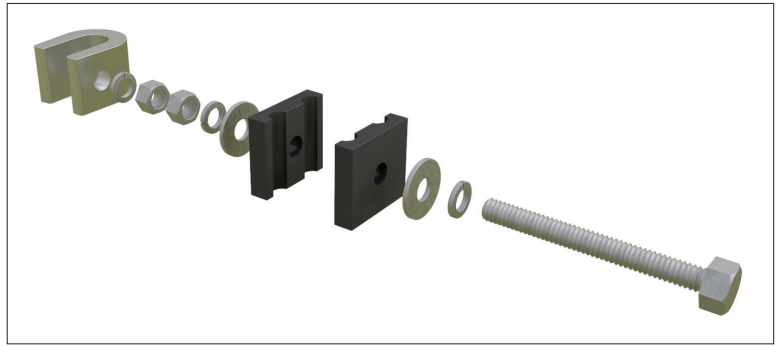
CAUTION

Failure to follow the precautions, notes, and steps contained within these Installation Instructions represents a misapplication of the product.

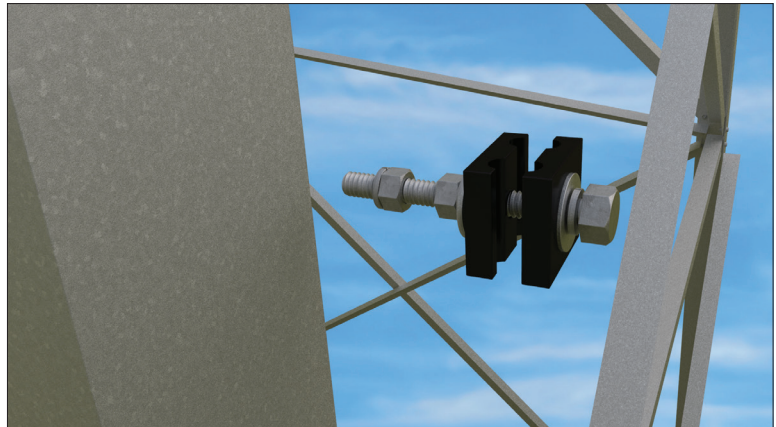
- Urethane FIBERLIGN Downlead Cushions may be used on round-profile ADSS or OPGW cables. Aluminum Downlead Cushions are for OPGW applications ONLY.
- Downlead Cushions are designed for a specific cable diameter range and should be used only on cables within that range. The numeric range is marked on each assembly for reference.
- **Allowable installation torque is 25 ft-lb for the urethane downleads and 20 ft-lb for the aluminum downleads.**

LATTICE TOWER APPLICATION

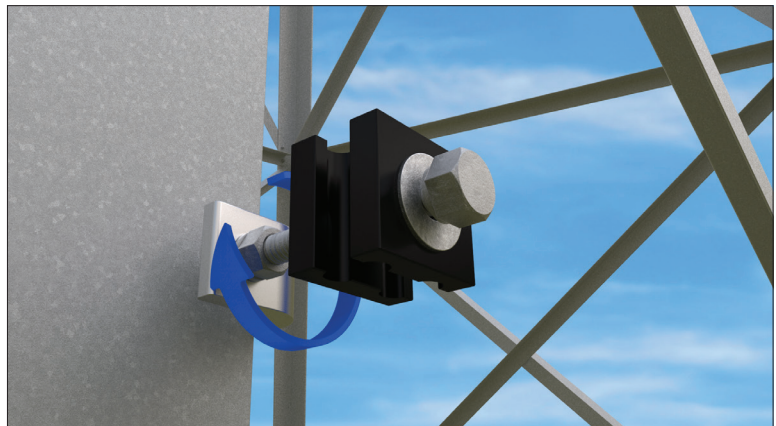
- 1 Begin by placing the supplied 5/8" lock washer and flat washer on the included 5/8" bolt. Then place the two halves of the downlead through the bolt. If a flat V-notch is present, place it so it faces away from the bolt head.



- 2 Place the remaining hardware onto the bolt in the following order: flat washer, lock washer, both nuts, and the remaining lock washer. At this stage, the downlead cushion should remain loosely installed.



- 3 Position the Downlead Cushion at the desired location and place the C-clamp over the structure. Thread the bolt into the C-clamp and torque the bolt to 30 ft-lb against the structure. Tighten the nut against the lock washer and clamp to secure the assembly in place.



- 4 Place the cable within the grooves of the Downlead Cushion halves, ensuring the cables are properly seated. Tighten the 5/8" nut against the back face of the cushion to the specified torque value.



Downlead Type	Installation Torque
Urethane	25 ft-lb
Aluminum	20 ft-lb



GLOBAL HEADQUARTERS
660 BETA DRIVE
CLEVELAND, OH 44143

+1 440 461 5200
INFO@PLP.COM
PLP.COM