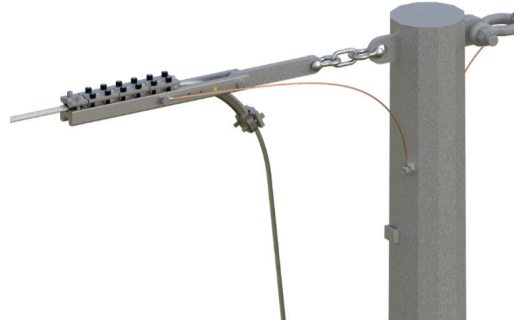




# FIBERLIGN® BOLTED DEAD-END FOR OPGW

## INSTALLATION INSTRUCTIONS

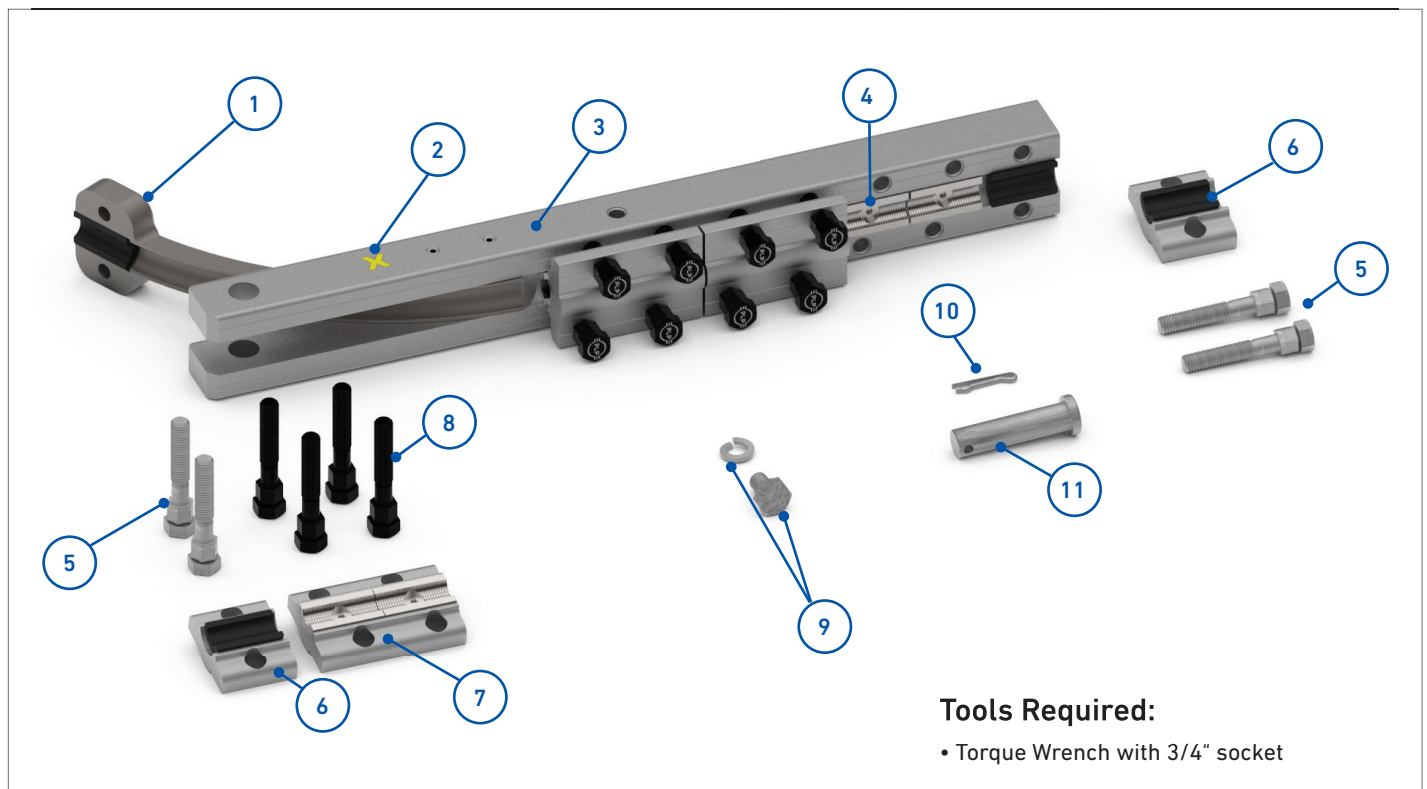


### IMPORTANT SAFETY INFORMATION

**READ AND COMPLETELY UNDERSTAND ALL INSTRUCTIONS BEFORE INSTALLING PRODUCT. FAILURE TO FOLLOW THESE INSTRUCTIONS MAY RESULT IN PERSONAL INJURY OR DEATH.**

This product is intended for use by trained technicians only. This product should not be used by anyone who is not familiar with and not trained to use it. When working in the area of energized lines, extra care should be taken to prevent accidental electrical contact. Be sure to wear proper safety equipment per your company protocol. These instructions are not intended to supersede any company construction or safety standards. These instructions are offered only to illustrate safe installation for the individual. PLP products are intended for the specified application only. Do not modify this product under any circumstances. Do not reuse or reinstall any PLP product unless that capability is expressly indicated in the product's Installation Instructions. For proper performance and personal safety, be sure to select the proper PLP product before installation. PLP products are precision devices. To ensure proper performance, they should be stored in cartons under cover and handled carefully.

## PACKAGE COMPONENTS



1. Downguide (Optional)
2. Size Code Label
3. Bolted Dead-End Body (1)
4. Grippers (12)

5. 15 ft-lb End Cap Shear Bolt (4)
6. Elastomer End Cap (2)
7. Keeper (3)
8. 35 ft-lb Keeper Shear Bolt (12)

9. 1/2" Grounding Hardware (1)
10. Cotter Pin (1)
11. 3/4" Clevis Pin (1)

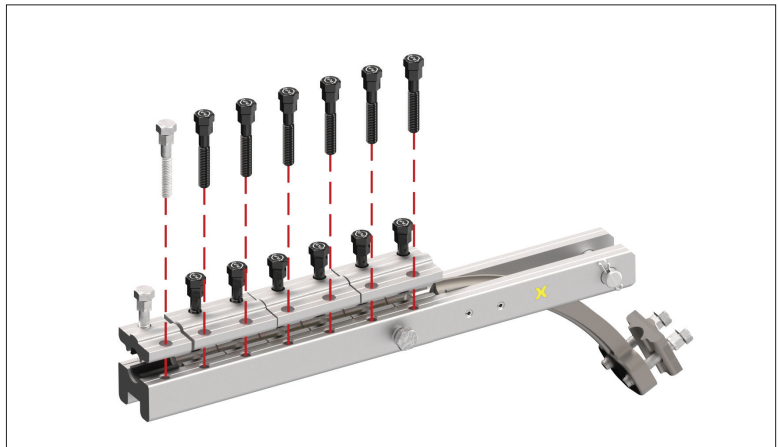
## INSTALLATION GUIDELINES

### CAUTION

Failure to follow the precautions, notes, and steps contained within these Installation Instructions represents a misapplication of the product.

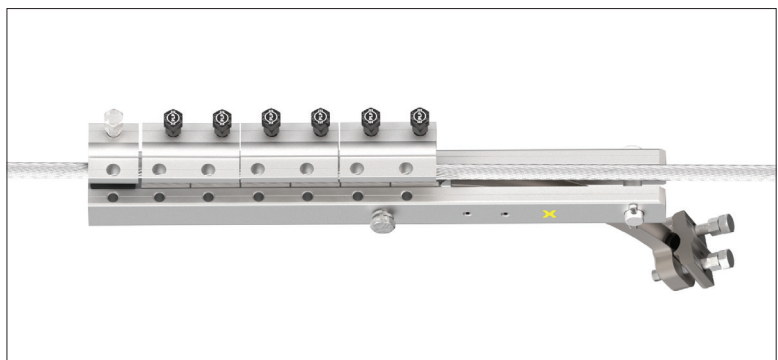
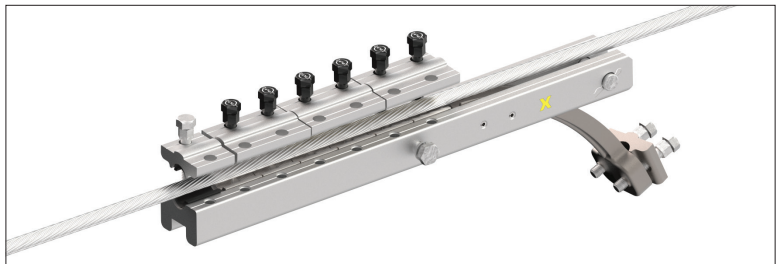
- The FIBERLIGN Bolted Dead-End for OPGW is designed for use with OPGW cables and not intended for other cable types. All products have a specified range and rating that must be adhered to.
- Proper torque sequencing must be followed per the practices detailed below. Alternative methods such as impact guns or other power tools are not permitted.
- The FIBERLIGN Bolted Dead-End is not to be used outside of its intended use at dead-end locations.
- Contact PLP for multi-strand layered OPGW designs or designs exceeding 25,000 lb RBS to verify holding strength.

- 1 Remove Shear Head Bolts from one side of the Keepers and one End Cap Shear Bolt. Loosen the bolts on the opposing side so the keepers can be lifted to allow for the OPGW cable to be positioned into the housing assembly.

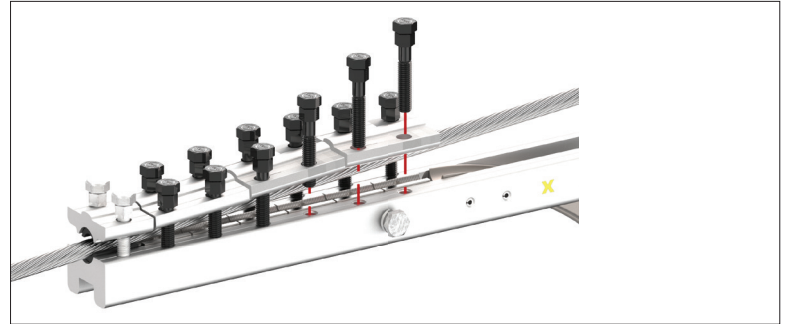


- 2 With half the bolts removed and the keepers loose, lift the dead-end onto the cable to capture it within the keepers.

**NOTE:** Rotate the dead-end 90 degrees to allow the keepers to remain open when placing the dead-end onto the cable.

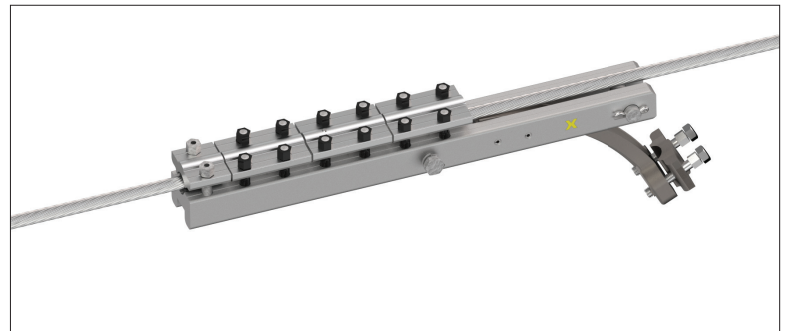
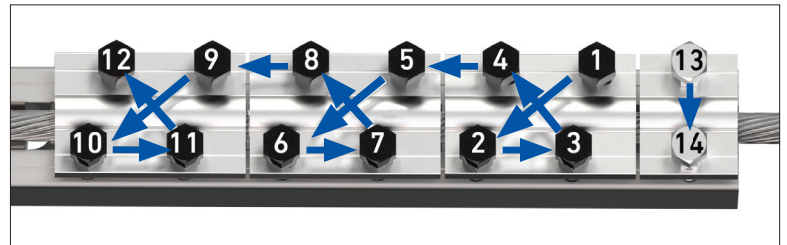


- 3 Orient the dead-end into the final desired position on the cable. Reinstall the shear head bolts that were removed in Step 1 to secure the cable within the dead-end. Hand-tighten all bolts to hold the dead-end in place. Ensure the cable is seated properly within the keepers.



- 4 Using a torque wrench, tighten the bolts to 5 ft-lb in the specified sequence, beginning with position 1 as shown. Repeat this process, incrementally increasing by 5 ft-lb until the shear bolt heads break away at approximately 35 ft-lb.

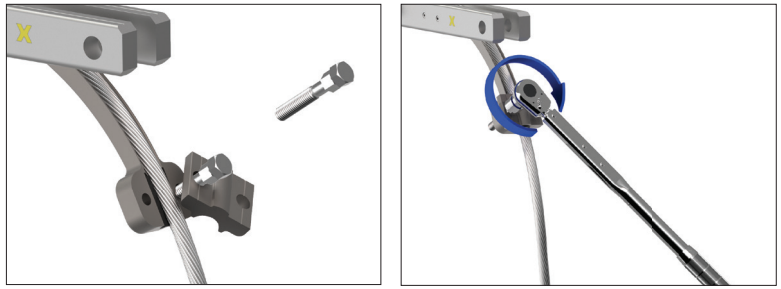
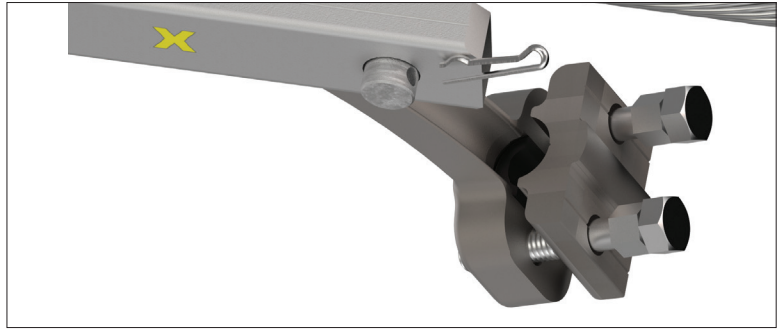
**NOTE:** The end cap bolts are rated to 15 ft-lb and will shear prior to the keeper bolts.



- 5 Visually inspect all keepers to ensure that they are applying even compression to the cable.



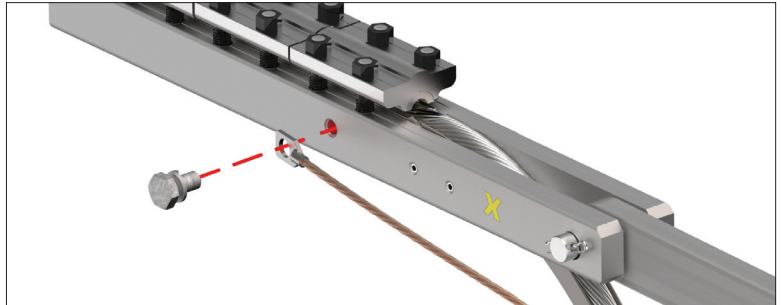
- 6 Remove the clevis pin or bolt. If using a downguide, loosen one bolt and remove the other. Rotate the end cap, position the cable in the downguide then reinstall the end cap keeper and bolts. With the cable seated properly in the downguide and keeper, torque the bolts in 5 ft-lb increments, alternating between the two until both shear heads break away.



- 7 Install desired attachment hardware then reinstall the clevis pin or bolt.



- 8 **Optional:** Attach a ground wire assembly using the 1/2" ground lug and lock washer. Torque the bolt until the lock washer is flat.



- 9 Installation complete.

