



# FIBERLIGN® LIMITED TENSION DEAD-END BRACKET

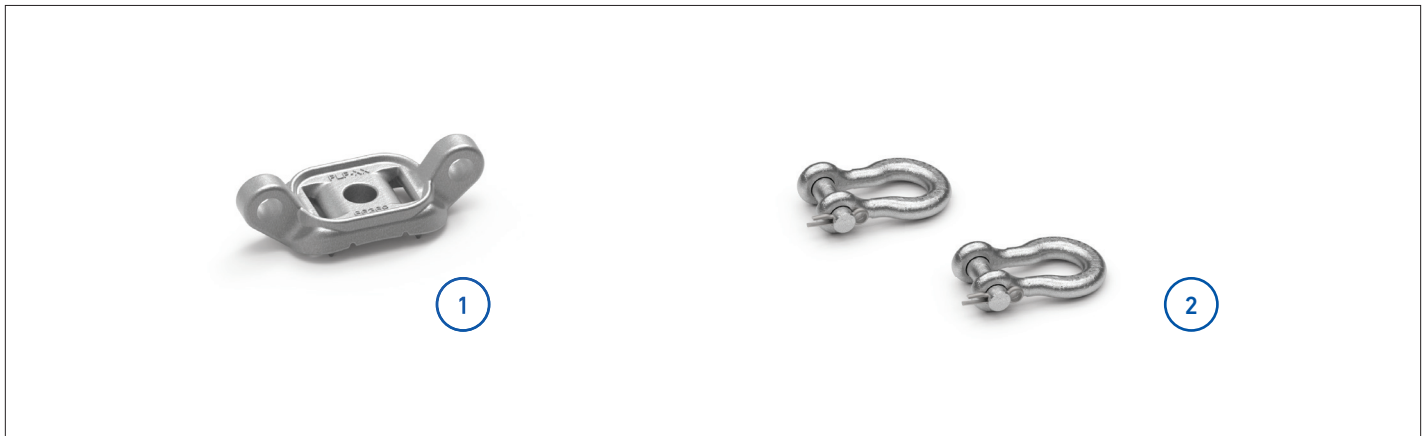
## INSTALLATION INSTRUCTIONS

### IMPORTANT SAFETY INFORMATION

**READ AND COMPLETELY UNDERSTAND ALL INSTRUCTIONS BEFORE INSTALLING PRODUCT. FAILURE TO FOLLOW THESE INSTRUCTIONS MAY RESULT IN PERSONAL INJURY OR DEATH.**

This product is intended for use by trained technicians only. This product should not be used by anyone who is not familiar with and not trained to use it. When working in the area of energized lines, extra care should be taken to prevent accidental electrical contact. Be sure to wear proper safety equipment per your company protocol. These instructions are not intended to supersede any company construction or safety standards. These instructions are offered only to illustrate safe installation for the individual. PLP products are intended for the specified application only. Do not modify this product under any circumstances. Do not reuse or reinstall any PLP product unless that capability is expressly indicated in the product's Installation Instructions. For proper performance and personal safety, be sure to select the proper PLP product before installation. PLP products are precision devices. To ensure proper performance, they should be stored in cartons under cover and handled carefully.

### PACKAGE COMPONENTS



1. Limited Tension Dead-End Bracket
2. Anchor Shackles (**Catalog Number: AS-5L**) (2)

#### Tools Required:

- Socket Wrench or Torque Wrench with 9/16" socket

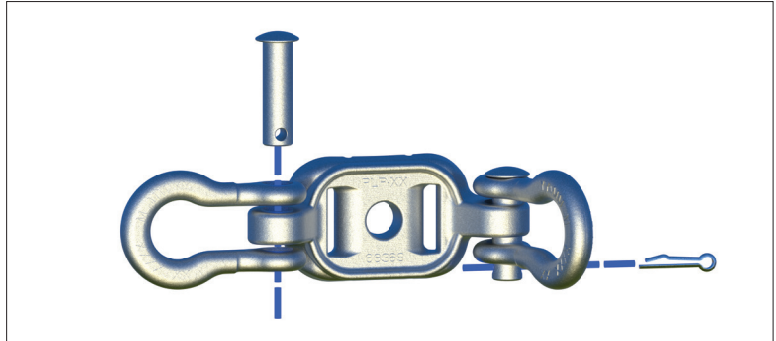
## INSTALLATION GUIDELINES

### CAUTION

Failure to follow the precautions, notes, and steps contained within these Installation Instructions represents a misapplication of the product.

- The FIBERLIGN Limited Tension Dead-End Bracket is designed for use with PLP's extension link and thimble clevis attachment hardware for limited tension dead-end applications for line angles up to 90 degrees.
- Bracket may receive standard 5/8" through bolt/double arming bolt hardware or up to 1-1/4" banding for structure mounting. This hardware is not provided by PLP.

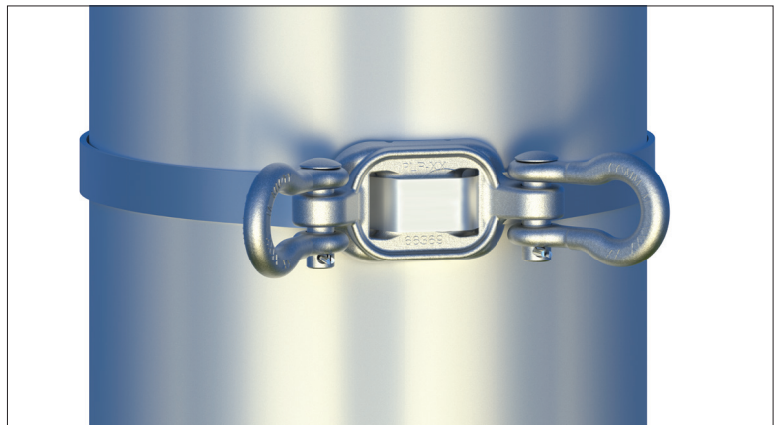
- 1 Prepare the Limited Tension Dead-End Bracket by installing both anchor shackles onto the ears of the bracket. Ensure all pins are seated properly and the cotter key is fully engaged within each pin.



- 2 Position the bracket at the desired location and secure it to the pole using a 5/8" through-bolt, washer, and nut. Ensure the through-bolt provides a minimum of 3" of exposed thread before bracket installation.

For banding applications, the bracket accommodates up to 1-1/4" banding.

**NOTE:** PLP does not supply banding. Banding should be installed following the appropriate manufacturer's instructions.

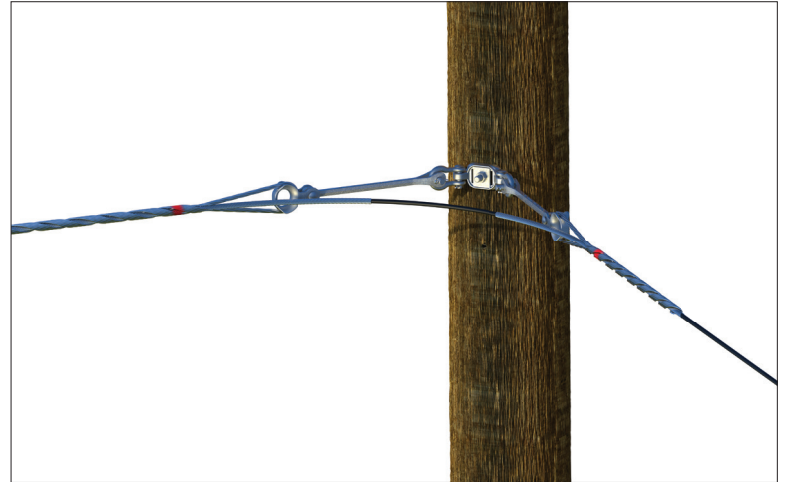


## POLE INSTALLATION

3

For the dead-end application, follow the installation instructions for the Limited Tension Dead-End, ensuring the extension link interfaces properly with the corresponding anchor shackle.

While the bracket can accommodate line angles up to 90 degrees, it is important to maintain a proper bend radius between each dead-end per the cable manufacturer's specification.





---

**GLOBAL HEADQUARTERS**  
660 BETA DRIVE  
CLEVELAND, OH 44143

+1 440 461 5200  
INFO@PLP.COM  
PLP.COM