



FIBERLIGN® DOWNLEAD CUSHION WITH BANDING BRACKET KIT

INSTALLATION INSTRUCTIONS

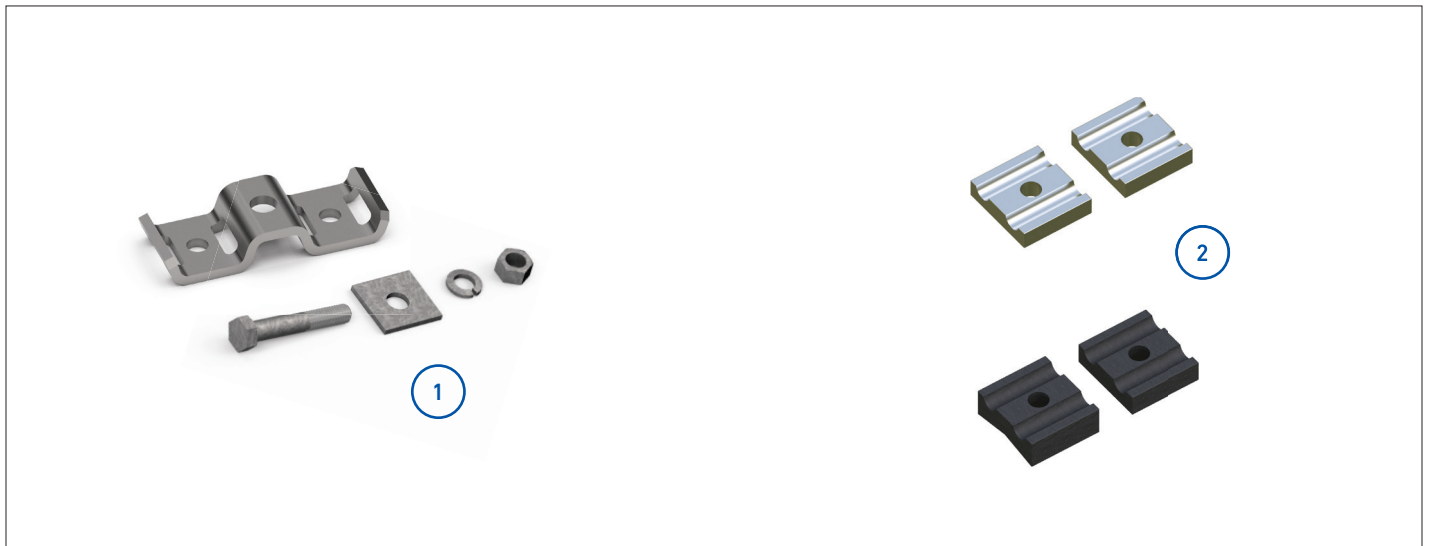


IMPORTANT SAFETY INFORMATION

READ AND COMPLETELY UNDERSTAND ALL INSTRUCTIONS BEFORE INSTALLING PRODUCT. FAILURE TO FOLLOW THESE INSTRUCTIONS MAY RESULT IN PERSONAL INJURY OR DEATH.

This product is intended for use by trained technicians only. This product should not be used by anyone who is not familiar with and not trained to use it. When working in the area of energized lines, extra care should be taken to prevent accidental electrical contact. Be sure to wear proper safety equipment per your company protocol. These instructions are not intended to supersede any company construction or safety standards. These instructions are offered only to illustrate safe installation for the individual. PLP products are intended for the specified application only. Do not modify this product under any circumstances. Do not reuse or reinstall any PLP product unless that capability is expressly indicated in the product's Installation Instructions. For proper performance and personal safety, be sure to select the proper PLP product before installation. PLP products are precision devices. To ensure proper performance, they should be stored in cartons under cover and handled carefully.

PACKAGE COMPONENTS



1. Banding Bracket Kit (Catalog Number: 710010576)
2. Download Cushion Halves - Aluminum **OR** Urethane

Tools Required:

Torque Wrench

INSTALLATION GUIDELINES

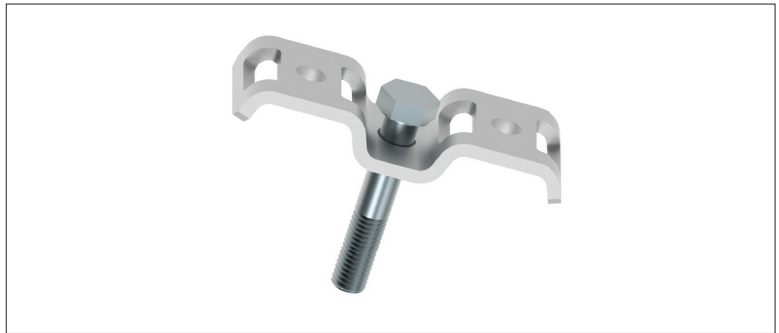
CAUTION

Failure to follow the precautions, notes, and steps contained within these Installation Instructions represents a misapplication of the product.

- The urethane FIBERLIGN® Downlead Cushions may be used on round-profile, ADSS or OPGW cables. Aluminum Downlead Cushions are for OPGW applications ONLY.
- The Downlead Cushions are designed for a specific cable diameter range and should be used only on cables within that range. The numeric range is marked on each assembly for reference.
- Allowable installation torque is 25 ft-lb for the urethane downleads and 20 ft-lb for the aluminum downleads.
- Use banding material with 95,000 psi (655 MPa) minimum tensile strength and 45,000 psi (810 MPa) yield strength for proper performance.

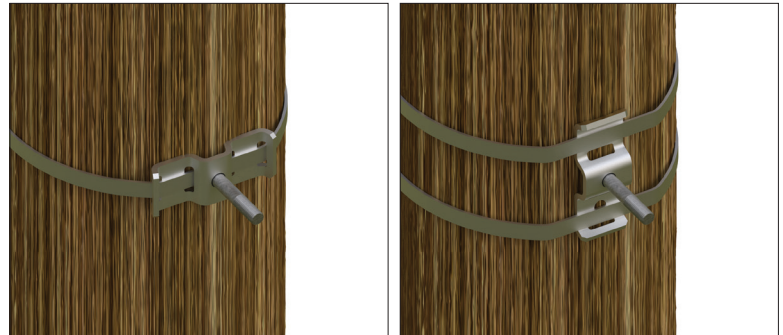
BANDING BRACKET APPLICATION

- 1 Begin installation by prepping the banding bracket for the Downlead Cushion. Insert the included bolt into the hole of the banding bracket. The head of the bolt should be seated within the indented section of the bracket.



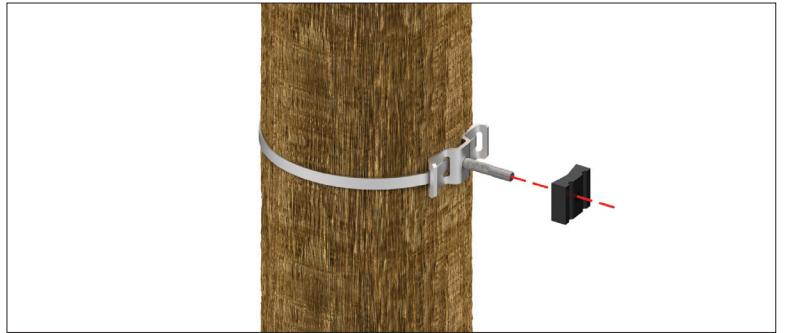
- 2 Find the desired location of the downlead cushion and place the banding bracket against the pole. The thread of the bolt should be facing away from the pole. Install the banding around the pole and through the slots of the bracket. Follow the banding manufacturers' instructions and tighten the banding and bracket around the pole.

NOTE: The banding bracket can also be installed vertically. Two bands are required for this installation. **PLP does not provide banding.** The banding bracket may accept up to 1-1/4" wide banding.



3

Place one half of the downlead cushion over the threaded section of the bolt. The V-groove on the urethane downlead cushions should be facing the pole.



4

Next, insert the cable within the grooves and place the other half of the downlead cushion on top of the inserted cables. Slide the included 5/8" flat washer and 5/8" lock washer onto the bolt. Use the included 5/8" nut to capture the downlead cushion halves.



5

Tighten the nut to the corresponding torque level to complete the installation.

Description	Allowable Installation Torque
Urethane Downlead	25 ft-lb
Aluminum Downlead	20 ft-lb





GLOBAL HEADQUARTERS
660 BETA DRIVE
CLEVELAND, OH 44143

+1 440 461 5200
INFO@PLP.COM
PLP.COM