



COYOTE® DRC (DROP REPAIR CLOSURE) FOR G.657 BEND-INSENSITIVE FIBER ONLY



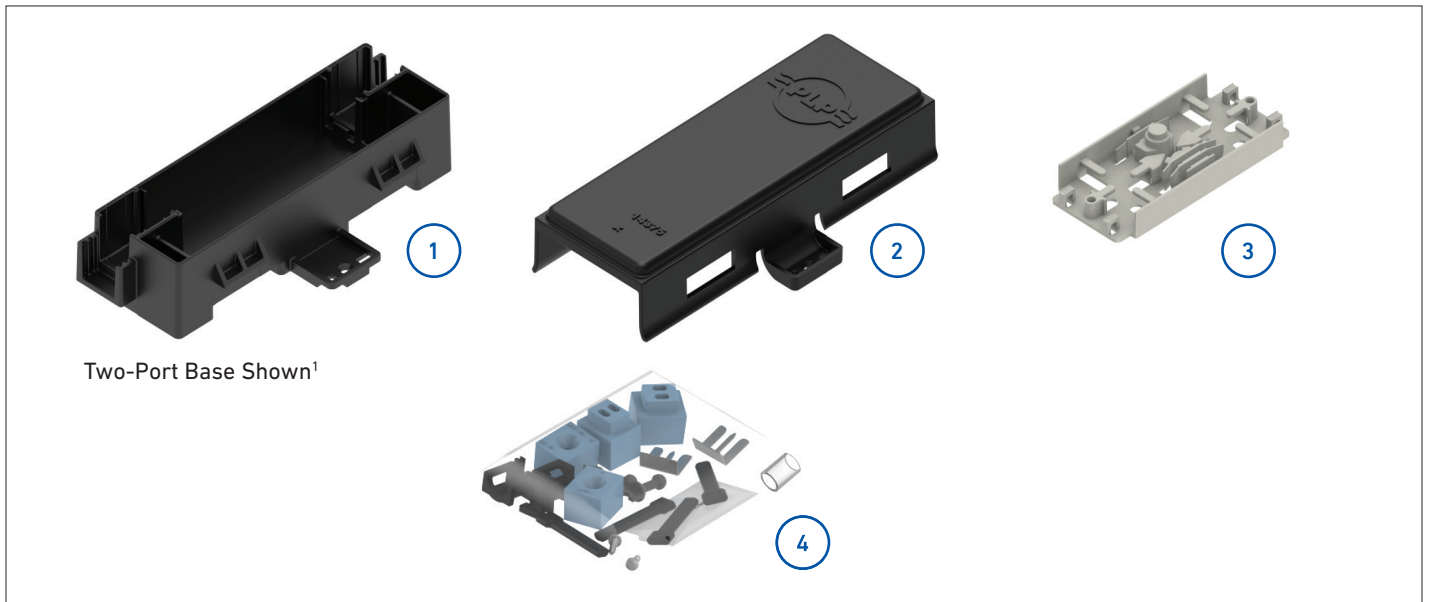
INSTALLATION INSTRUCTIONS

IMPORTANT SAFETY INFORMATION

READ AND COMPLETELY UNDERSTAND ALL INSTRUCTIONS BEFORE INSTALLING PRODUCT. FAILURE TO FOLLOW THESE INSTRUCTIONS MAY RESULT IN PERSONAL INJURY OR DEATH.

This product is intended for use by trained technicians only. This product should not be used by anyone who is not familiar with and not trained to use it. When working in the area of energized lines, extra care should be taken to prevent accidental electrical contact. Be sure to wear proper safety equipment per your company protocol. These instructions are not intended to supersede any company construction or safety standards. These instructions are offered only to illustrate safe installation for the individual. PLP products are intended for the specified application only. Do not modify this product under any circumstances. Do not reuse or reinstall any PLP product unless that capability is expressly indicated in the product's Installation Instructions. For proper performance and personal safety, be sure to select the proper PLP product before installation. PLP products are precision devices. To ensure proper performance, they should be stored in cartons under cover and handled carefully.

PACKAGE COMPONENTS



1. Base¹ (2-Port or 4-Port Base option) (1)
2. Cover (1)
3. Splice Platform (1)
4. Small Parts Bag¹ (1)

¹Kit contents vary per catalog number

Tools Required:

- Snips
- Fiber Optic Cable Opening Tools
- Phillips Head Screwdriver

CABLE PREPARATION

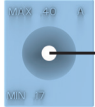
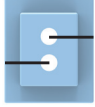



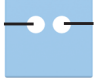
1

Measure each cable to determine its diameter, then select the proper grommet(s) for your application from the table below.

NOTE: The lines shown on the grommet selection chart below indicate the required slitting locations for grommets used with express cable.

NOTE: Before taking the diameter measurement, if the cable is a Figure 8 style cable or contains a tracer wire, remove the wire portion of the cable and any burrs left on the cable caused by separating the tracer wire from the sheath before inserting the cable into the grommet.



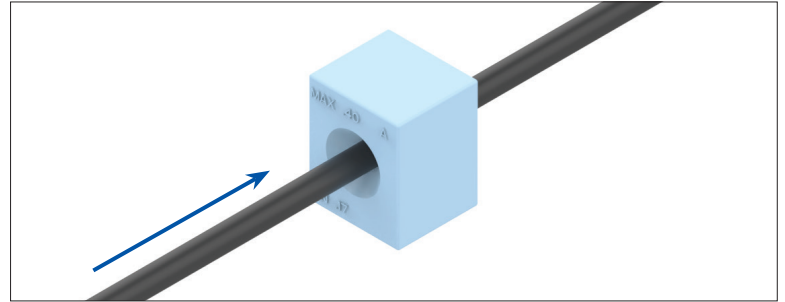
Grommet Selection	Cable Diameter Range
	0.170" - 0.320", Conical (4.3 - 8.1 mm)
	0.156" - 0.170" Round Drop Cables (4.0 - 4.3 mm)
	0.118" - 0.125" Round Drop Cables (3 - 3.2 mm)
	For Flat Drop Cables ²
	ROC™ Drop Grommet Dielectric Drop Only ²
	0.170" - 0.218" Round Drop Cables (4.3 - 5.5 mm)

ROC™ is a trademark of Corning Incorporated.

²Not available for slitting applications

- 2 If using cut cable, insert the cable through the grommet. Insert grommet plugs in any unused holes.

NOTE: If your application requires express/balloon/ring cut cables, see **Step 4** for grommet slitting procedure.

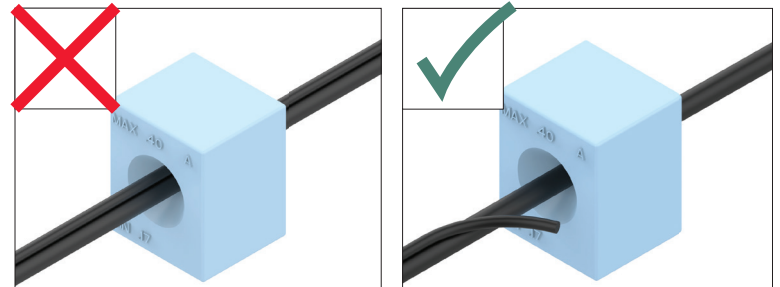


- 3 To install the Figure 8 style cables or cables with the tracer wire in a grommet, remove the tracer/ground wire from the portion of the cable that will be positioned in the grommet. Remove any burrs left on the cable caused by separating the tracer/ground wire from the sheath and insert the cable into the grommet.

CAUTION

Failure to separate the tracer wires or the ground wires from the cable or removing the burrs left on the cable may allow water to migrate through the cable entrance of the grommet.

Cable with Tracer Wire or Figure 8 Cable



Incorrect Installation

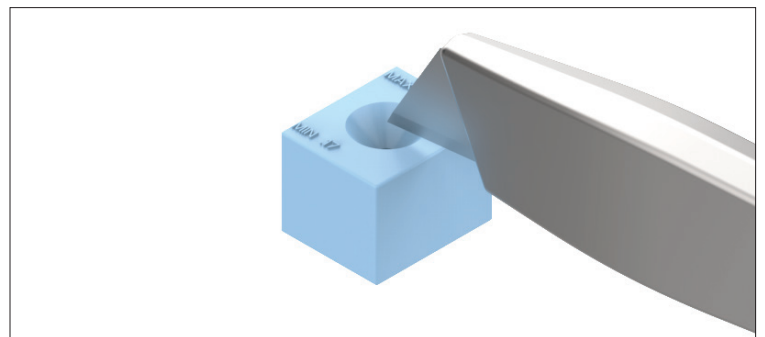
Correct Installation

GROMMET SLITTING

FOR EXPRESS/BALLOON/RING CUT CABLES

- 4 If slitting is required, lay the grommet on a stable flat surface. Position the utility knife with the cutting edge against the top surface and cut through the grommet. **Consult the grommet chart in Step 1 for the slitting locations of all grommets.**

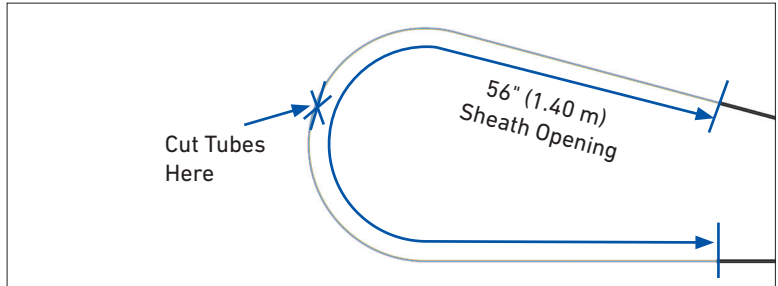
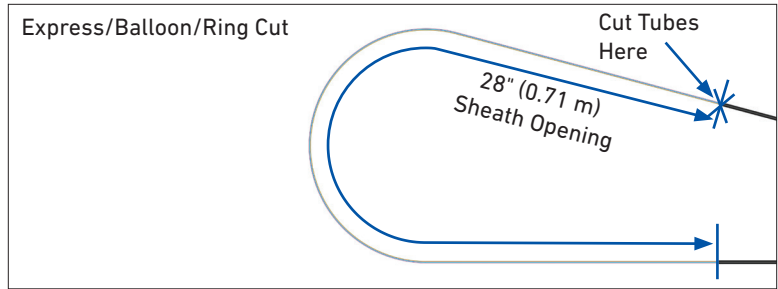
NOTE: Use a pen to sketch the slitting lines on the top of surface of the grommet prior to cutting.



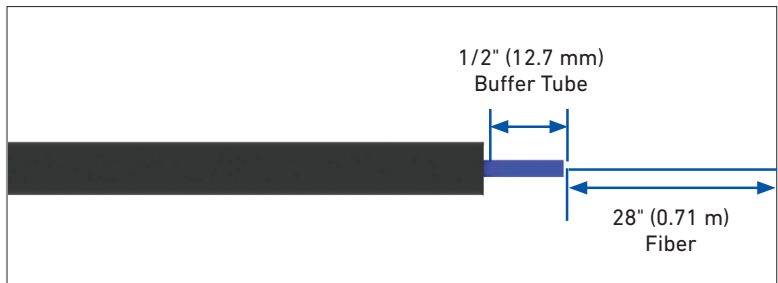
CABLE SHEATH OPENING WHEN FIBER IS DEDICATED TO THE SPLICE POINT

- 5** Prepare the loose tube/buffer tube or cable(s) for the mid sheath applications.

NOTE: If the cable has embedded strength members, trim them as close to the cable jacket as possible.

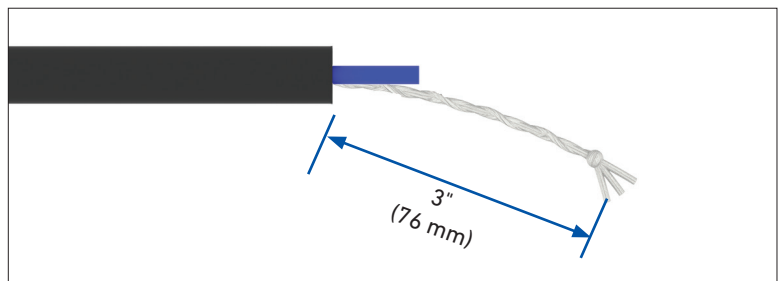


- 6** Open the buffer tube 1/2" (12.7 mm) away from the cable sheath opening.

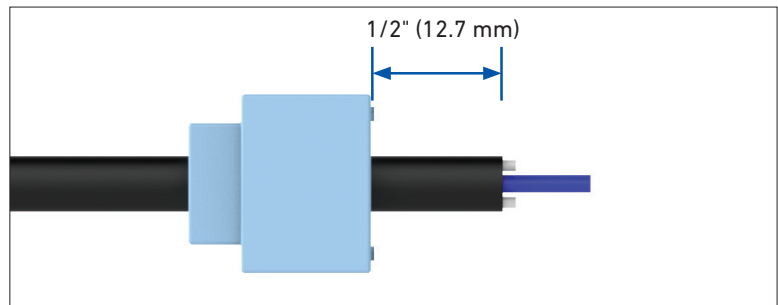


PREPARING CABLE RESTRAINT

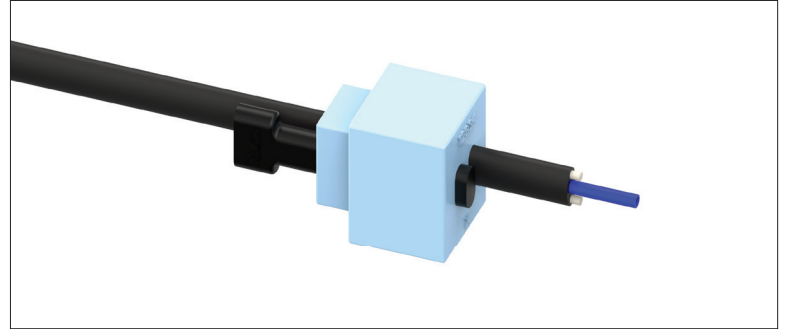
- 7** If the cable contains aramid yarn, braid roughly 3" (76 mm) of the aramid yarn.



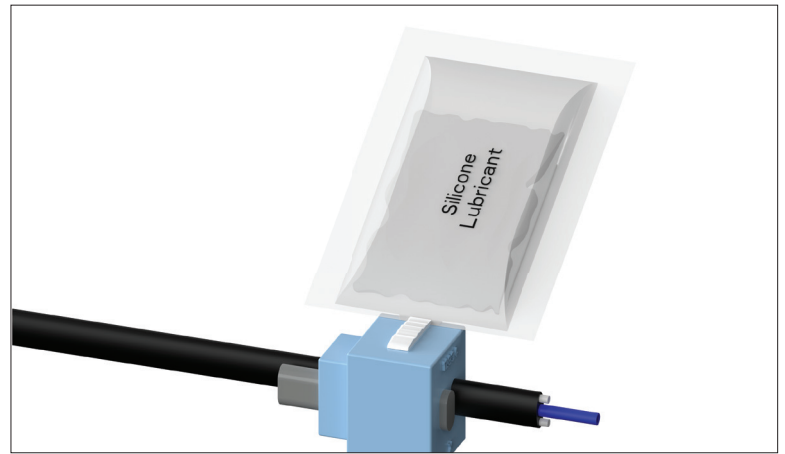
- 8** Position the grommet 1/2" (12.7 mm) away from the cable sheath opening.



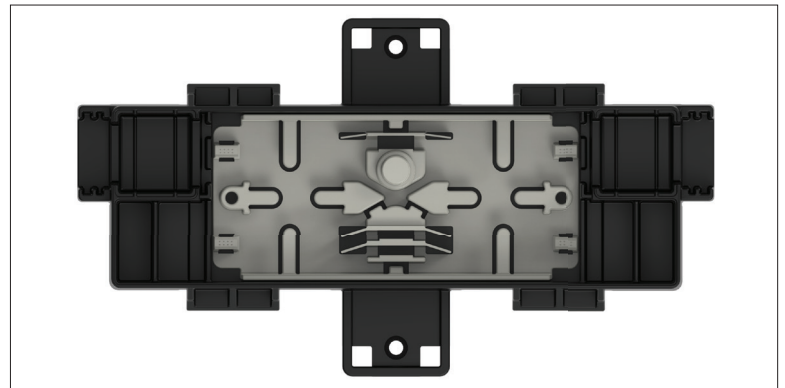
- 9 Plug any unused holes in the grommets. For drop cable applications, the plugs cannot protrude more than 1/8" (3.2 mm) towards the inside of the closure.



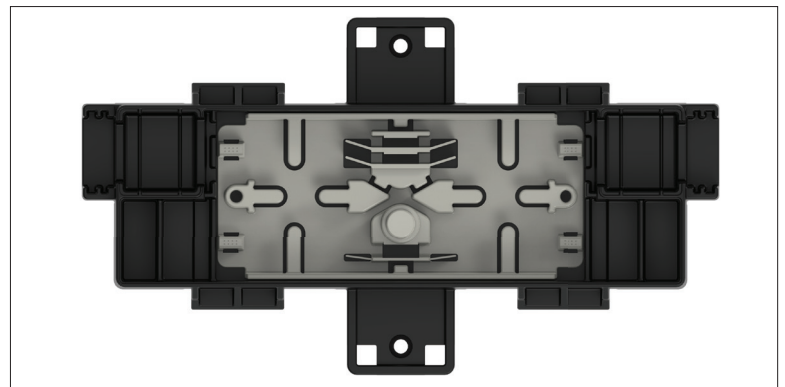
- 10 Lubricate the outer surface of the grommets with the silicone lubricant provided. Spread the lubricant evenly around the outer surface of the grommet.



- 11 Select the tray orientation based on if you are using single or mass fusion splicing as shown.

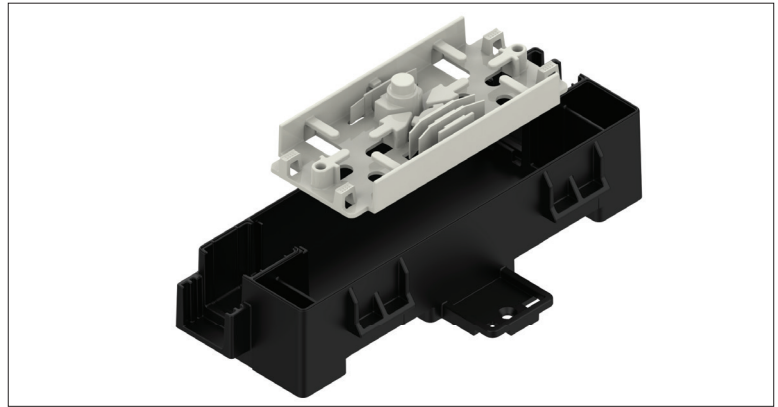


Single Fusion Splice

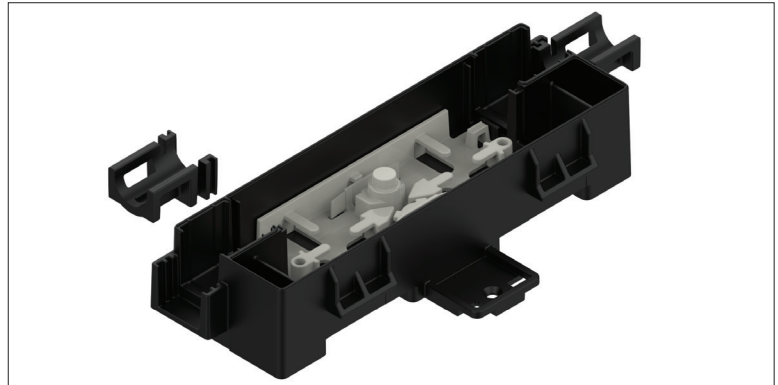


Mass Fusion Splice

- 12 Install the splice platform in the closure according to the orientation chosen in **Step 11**.

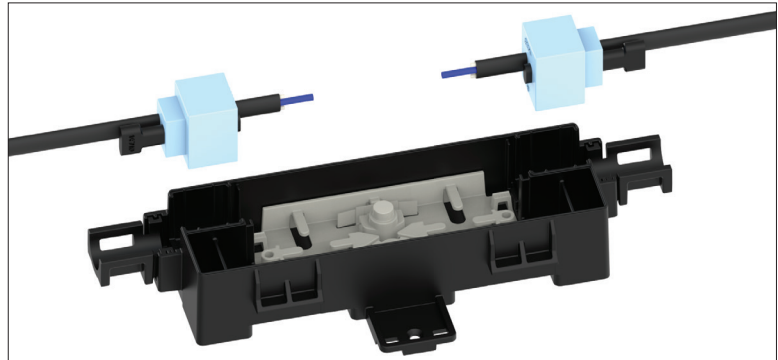


- 13 Install the external restraint brackets in the ports where grommets are to be used.



- 14 Align the grommet with the grommet port in the base. Install the grommet and the cable into the base by pressing down firmly.

NOTE: The fiber is not shown in the following images for clarity.

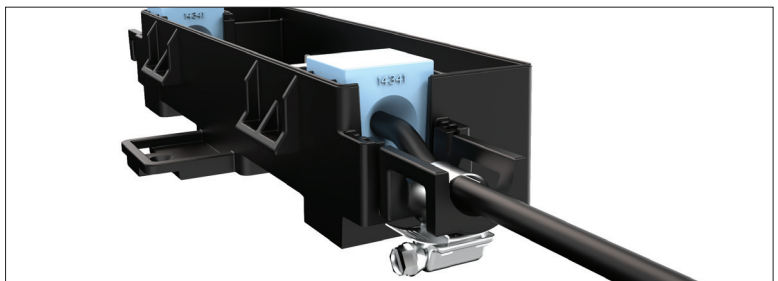
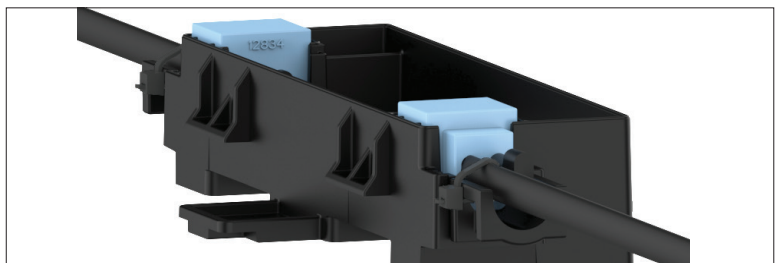


- 15 Restrain the cable to the external restraint bracket using a UV-stabilized cable tie or a hose clamp.

NOTE: When using the hose clamp, ensure the hose clamp body is located at the bottom of the external restraint bracket.

CAUTION

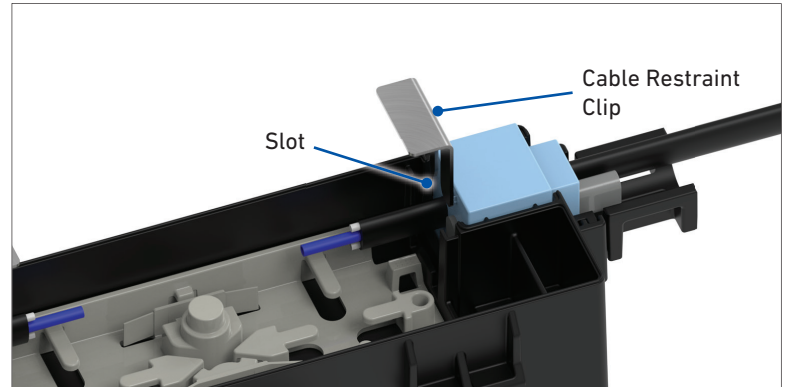
Must use UV-stabilized cable ties.



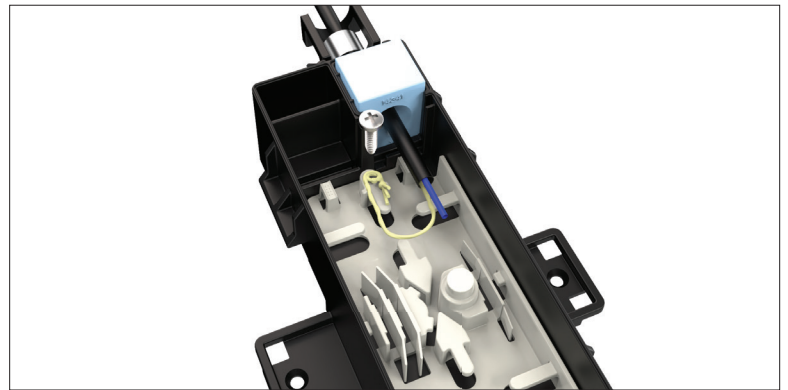
- 16** If using the flat drop or ROC™ Drop Cable, align the cable restraint clips with the slots in the base. Firmly press the clip onto the outer jackets of the drop cables.

NOTE: A can wrench can be used to make the installation easier.

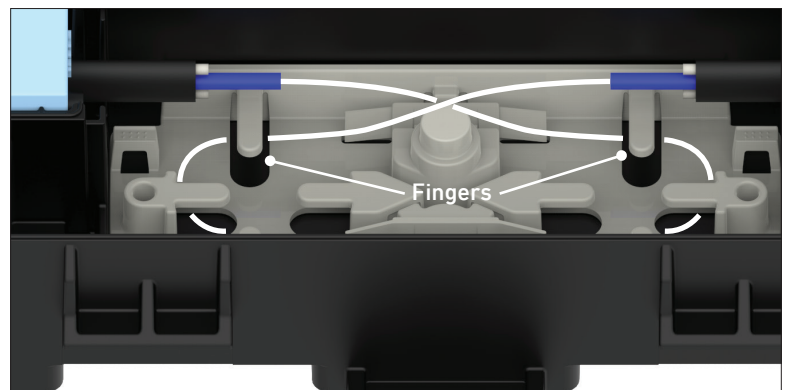
NOTE: The restraint clip cannot go over the grommet plugs. See **Step 9** for proper plug placement.



- 17** For cables with aramid yarn, wrap the braided aramid yarn around the screw and fully tighten. Use the #6 x 3/8" long screw provided.



- 18** Route the fibers under the fingers in the splice platform.

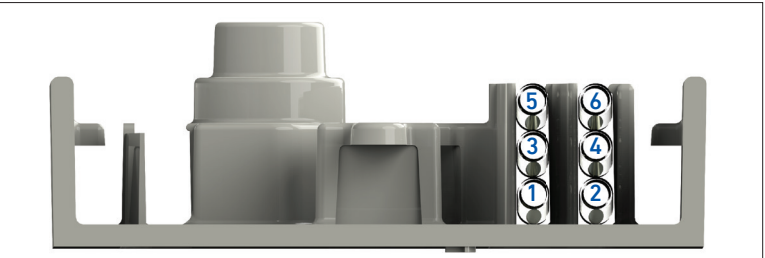
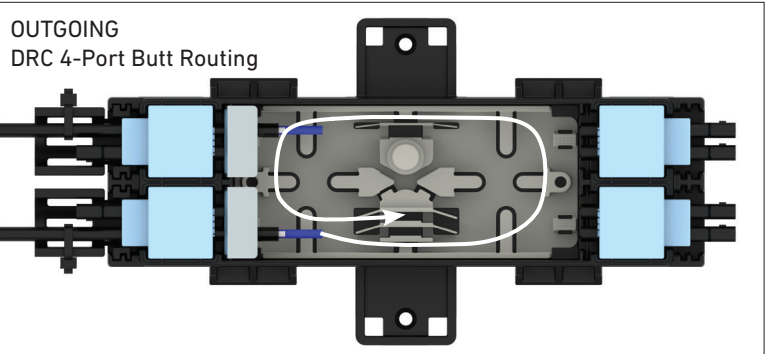
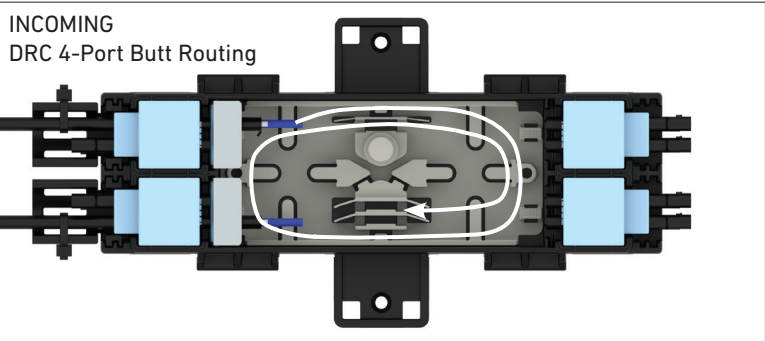
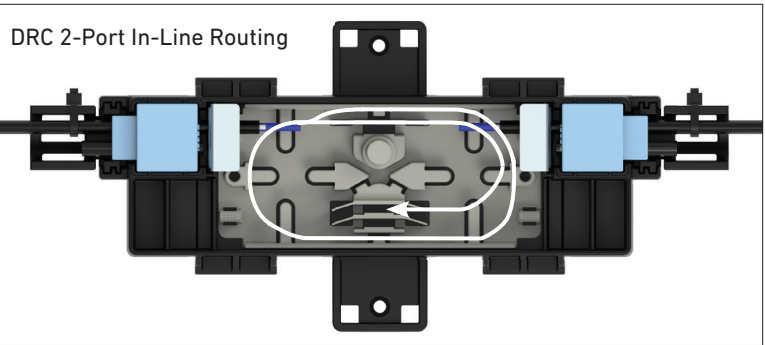


ROUTING FIBER TO SPLICE

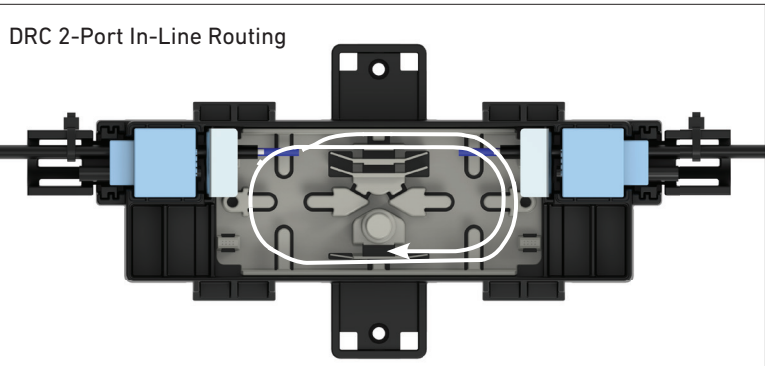
19

Single Fusion - Route the fibers being spliced under the tabs of the splice platform as shown.

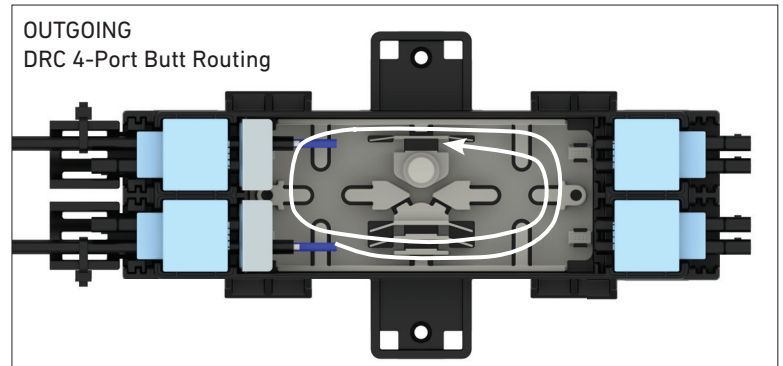
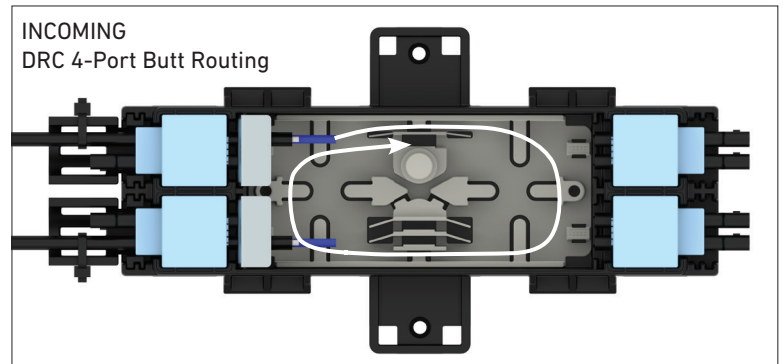
NOTE: For single fusion applications, load the splice protectors into the splice platform in the order shown.


20

Mass Fusion - Route the fibers being spliced under the tabs of the splice platform as shown.

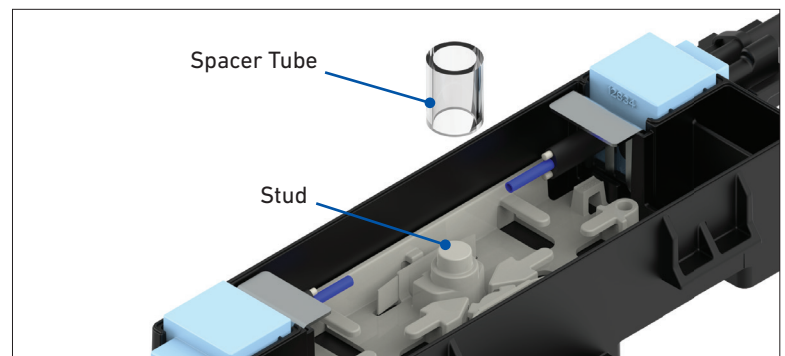


- 20 Mass Fusion CONTINUED - Route the fibers being spliced under the tabs of the splice platform as shown.



- 21 Splice the incoming fibers to the outgoing fibers per your accepted company practice.

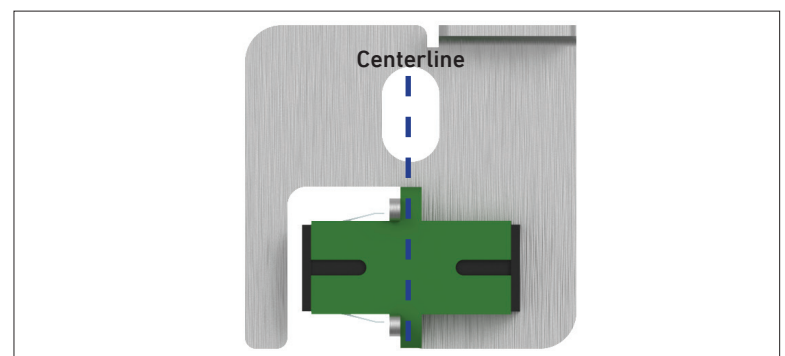
- 22 Install the spacer tube over the stud on the splice platform.



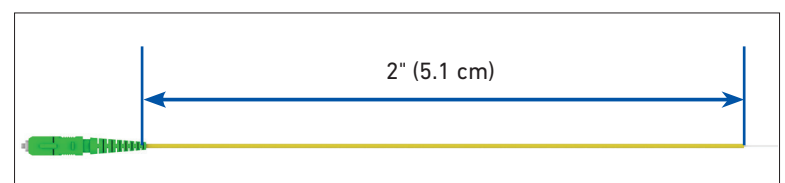
ROUTING PIGTAILS (OPTIONAL)

- 23 Remove the dust covers from the adapter. Install the adapter into the adapter platform as shown.

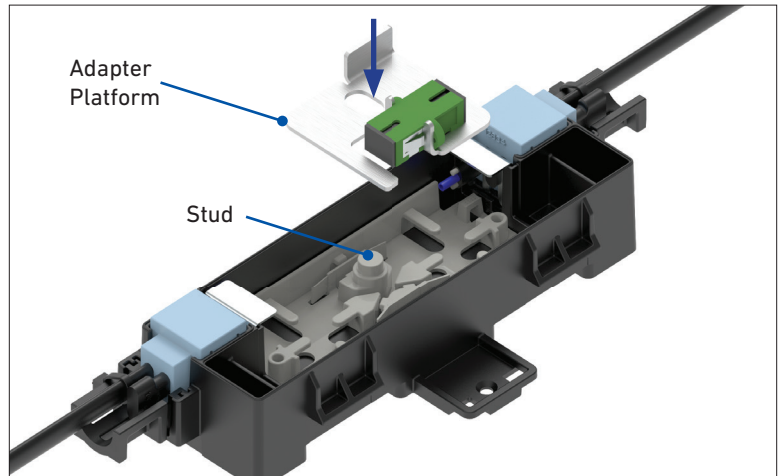
NOTE: The flange of the adapter should be on the centerline of the adapter plate to ensure equal spacing.



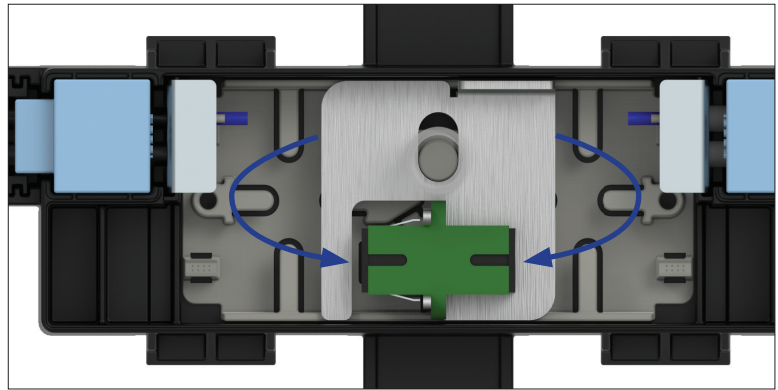
- 24 Measure and mark each pigtail as shown. Remove the jacket of each pigtail beyond the marked location.



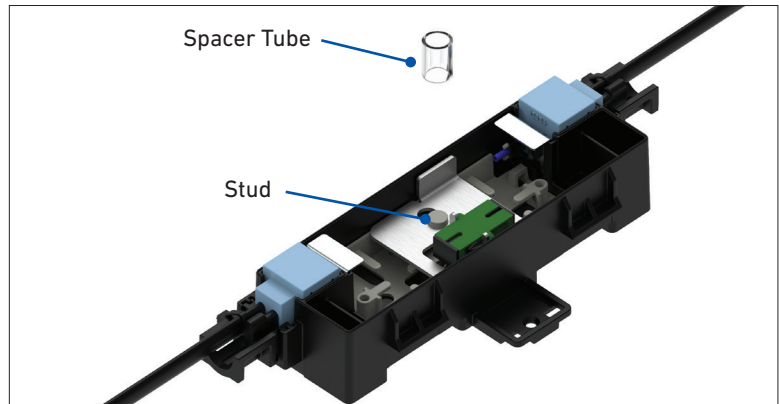
- 25 Install the adapter platform onto the stud on the splice platform.



- 26 Route the short boot pigtails up from the slack storage below to the adapter and install.

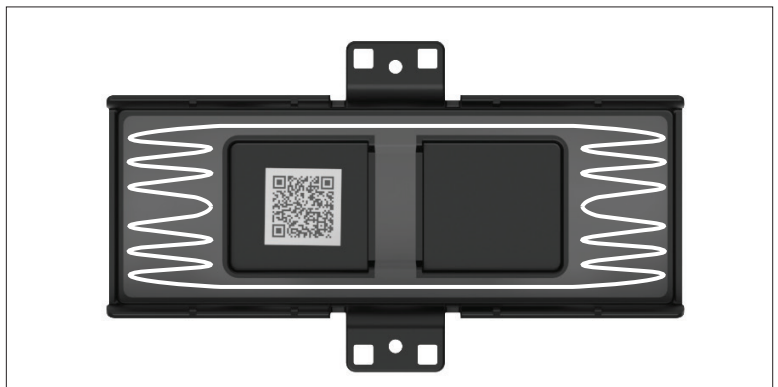


- 27 Install the spacer tube over the stud on the splice platform.

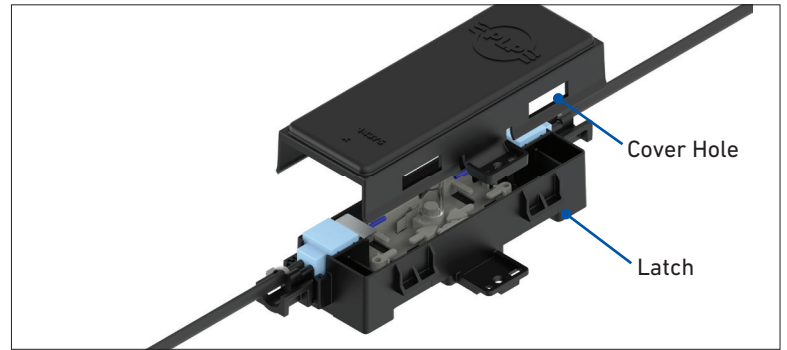


INSTALLATION OF COVER

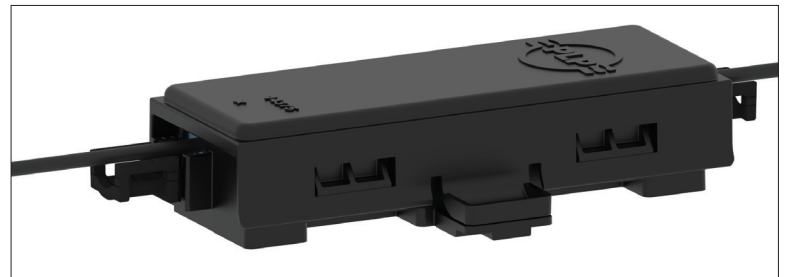
- 28 Lubricate all surfaces of the gasket with the silicone lubricant to ensure proper assembly and closure re-entry.



- 29 Align the cover holes with the latches on the base and snap the cover onto the base.



- 30 Check all four latches to ensure the cover is properly installed.



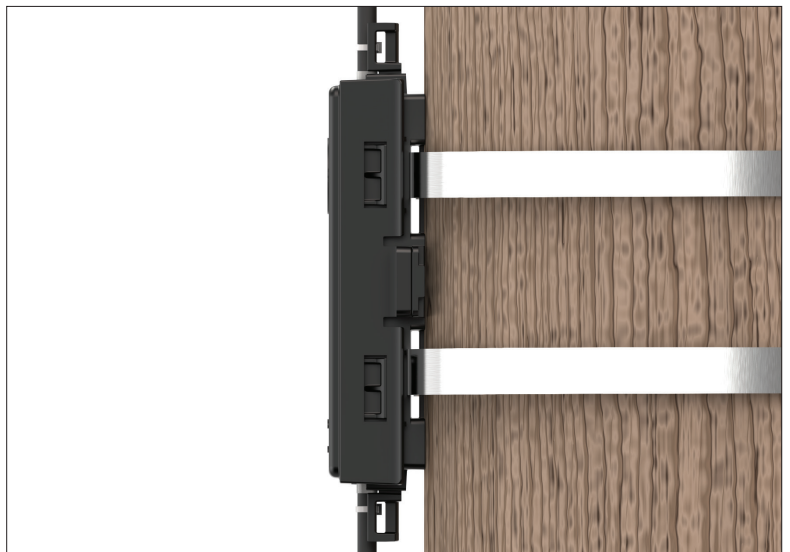
REMOVING THE COVER

- 31 Insert your fingers or a flathead screwdriver under the flanged tabs on the cover and rotate the tabs away from the latches on the base.



MOUNTING OPTIONS

- 32 Pole mount option.



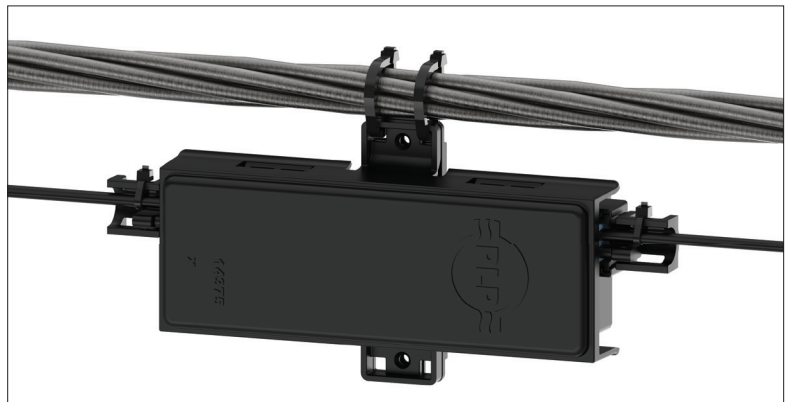
33 Wall mount option.



34 Aerial mount option.

CAUTION

UV-stabilized cable ties are required.



GLOBAL HEADQUARTERS
660 BETA DRIVE
CLEVELAND, OH 44143

+1 440 461 5200
INFO@PLP.COM
PLP.COM