



## FIBERLIGN® MULTI-DROP BRACKET

### DIRECT MOUNT

The **FIBERLIGN Multi-Drop Bracket – Direct Mount** is designed to reduce attachment costs at the pole by effectively minimizing the pole space and hardware required to attach multiple cables at the pole. This bracket allows multiple FIBERLIGN Extended Span and ADSS Drop cable dead-ends to be supported off of one side of the pole. A single bolt or band is used to attach the bracket to the pole or structure to save on additional pole attachment fees.





### FEATURES AND BENEFITS

- Reduces the pole space and hardware required to connect multiple drop cable spans to the structure
- Can be mounted vertically or horizontally when bolted to the structure
- Utilized for short or long span installations of multiple drop cables
- Compatible with formed wire dead-ends and drop clamps (p-clamps)
- Attaches to the pole or structure with a 5/8" through bolt, 5/8" double arming bolt, or 1-1/4" wide banding.
- Made of ductile iron that is galvanized per ASTM A-153

## SPECIFICATIONS

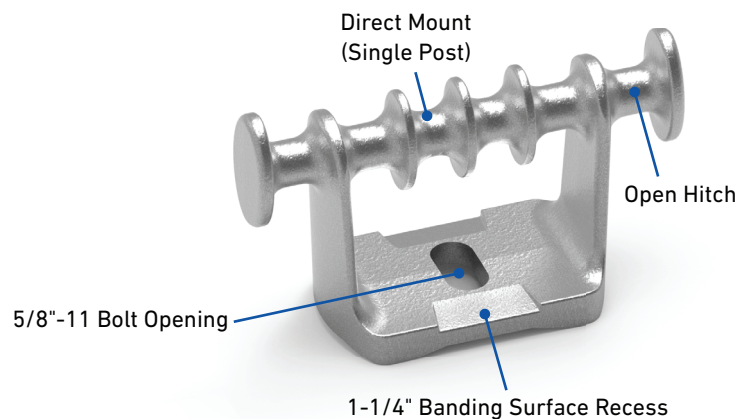
| Characteristic                             | Specification |
|--|---------------|
| Maximum Allowable Load at each Spool       | 1,200 lb      |
| Total Maximum Tension Load (6 Cable Spans) | 7,200 lb      |
| Maximum Vertical Load                      | 2,000 lb      |

## COMPATIBLE DEAD-END CAPACITY

| Dead-End Type  | Application for Dead-End Type               | Maximum Quantity per Bracket              |   |
|--|---|---|---|
| Drop Clamps (P-Clamps)                                   | 2-4 per Open Spool                          | Up to 8 Total depending on max load/clamp |    |
| FIBERLIGN® ADSS Drop Cable Dead-Ends with Open Thimbles* | 1 per Center Spool Location                 | Up to 4 per Bracket                       |    |
| FIBERLIGN® Lite Tension Dead-Ends with Open Thimbles*    | 1 per Spool Location (Open & Center Spools) | Up to 6 per Bracket                       |   |
| FIBERLIGN® Extended Span Dead-Ends                       | 1 per Spool Location                        | Up to 6 per Bracket                       |  |

\*Open Thimble (**Catalog Number: 00066114**) must be used when pairing with the Multi-Drop Bracket and ordered separately from the dead end.

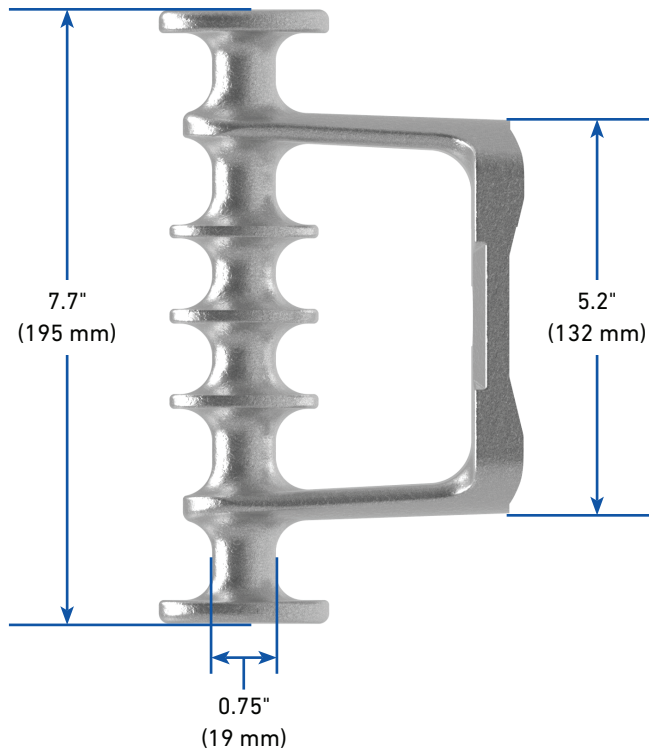
## COMPONENTS



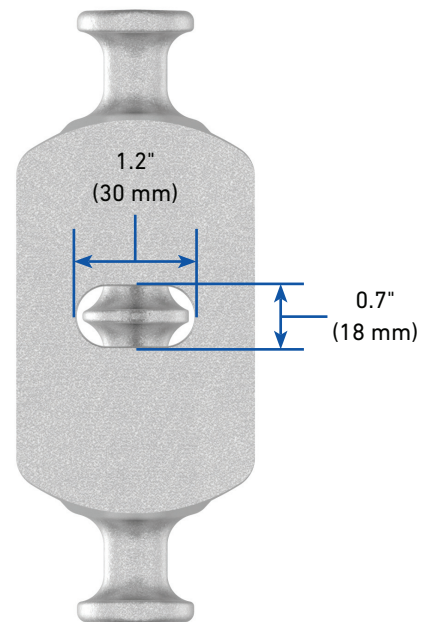


## DIMENSIONS

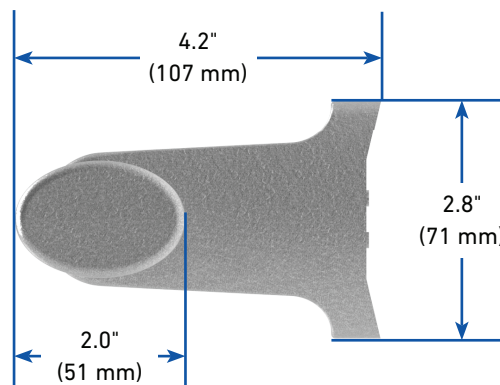
**Side View**



**Back View**



**Top View**





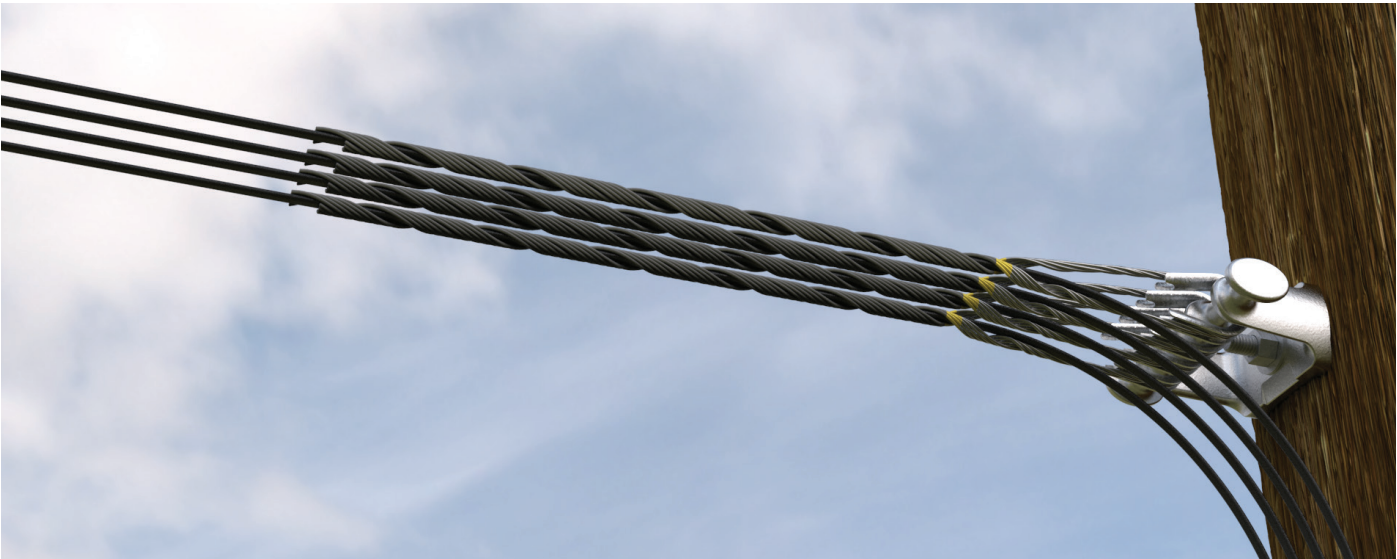
# ORDERING INSTRUCTIONS

- Select the catalog number from the table below when attaching multiple drop cable spans to a pole or structure with drop clamps (p-clamps), formed wire dead-ends with a 3/4" (19 mm) cable loop diameter, or formed wire dead-ends with an appropriate open style thimble.

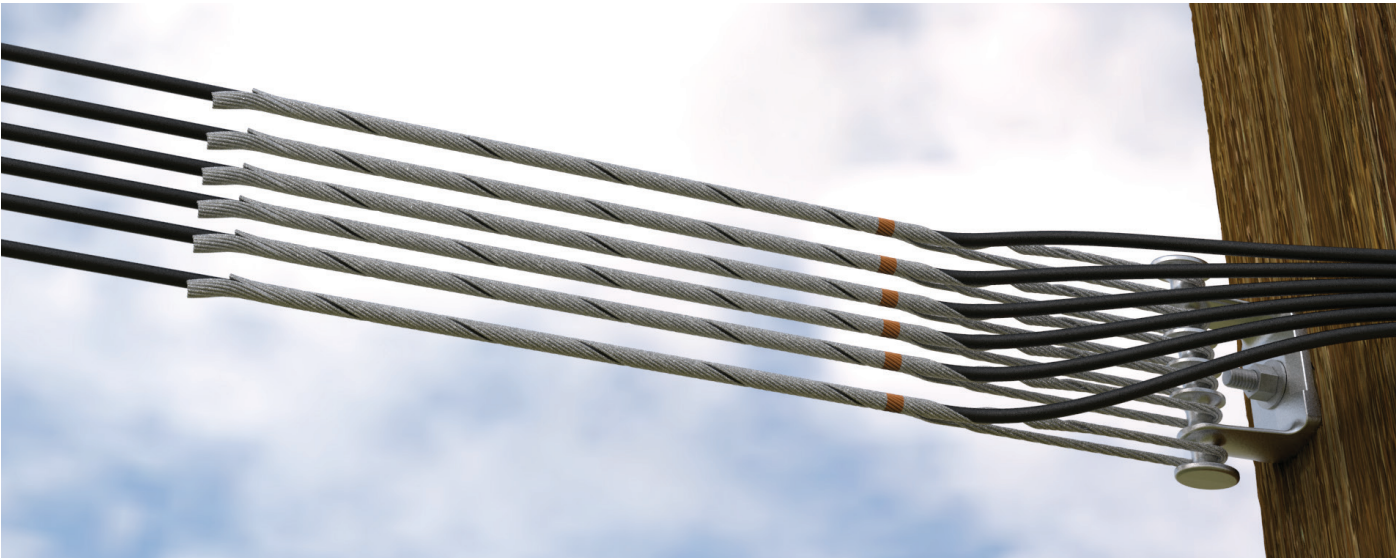
## Direct Mount Multi-Drop Bracket

| Catalog Number | Description                     |
|----------------|---------------------------------|
| MDB106*        | Direct Mount Multi-Drop Bracket |

\*Lite Tension and Drop Cable Dead-Ends require the use of an Open Thimble (**Catalog Number: 00066114**) which must be ordered separately.



Direct Mount Multi-Drop Bracket with (4) FIBERLIGN® ADSS Drop Cable Dead-Ends with Open Thimble



Direct Mount Multi-Drop Bracket with (6) FIBERLIGN® Extended Span Dead-Ends