

FIBERLIGN® EZ CUSHION SUSPENSION

The **FIBERLIGN EZ Cushion Suspension** uses elastomer inserts to reduce static and dynamic stresses at the support point in the OPGW system.

FEATURES AND BENEFITS

- Field-proven, elastomer cushion inserts guard against abrasion, wear, and fatigue
- Inserts have a unique hourglass shape that helps expand the angle rating to 30 degrees
- Structural reinforcing rods are not needed for installation; strain relief relies solely on the cushion inserts
- All fasteners are factory installed and captive, eliminating lost hardware in the field
- Fastener-retained housing halves allow the suspension to be installed over OPGW simply by loosening the captive fasteners and spreading the halves open
- Cushion-style suspension reduces dynamic strain levels on OPGW by 40% to 50% when compared to bare suspension clamps
- An optional ground wire assembly can be included with the suspension
- The FIBERLIGN EZ Cushion Suspension has been thoroughly tested for vibration, mechanical loading, and optical attenuation in accordance with IEEE Standard 1138 and IEEE Standard 1591.1

HOLDING STRENGTHS AND LINE ANGLES

Characteristic	Specification
Unbalanced/Slip Load	15%–20% of Standard OPGW Rated Strength up to 5,000 lb (89kN)
Maximum Vertical Load	20,000 lb
Maximum Line Angle	30 degrees for single suspension; 60 degrees for double suspension

ATTACHMENT FITTINGS

- An Anchor Shackle (Catalog Number: AS-5L) can be included with Single or Double Cushion Clamps.
- A Y-Clevis (Catalog Number: YC-5207) or Clevis Eye (Catalog Number: CE-5261) can be included with Single Cushion Clamps.
- A Yoke Plate (Catalog Number: YP-5908) with two Clevis Eyes (Catalog Number: CE-5261) can be included with Double Cushion Clamps.



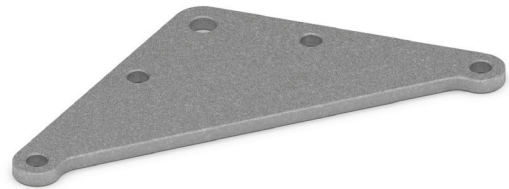
30,000 lb Anchor Shackle
(Catalog Number: AS-5L)



20,000 lb Y-Clevis Eye
(Catalog Number: CE-5207)

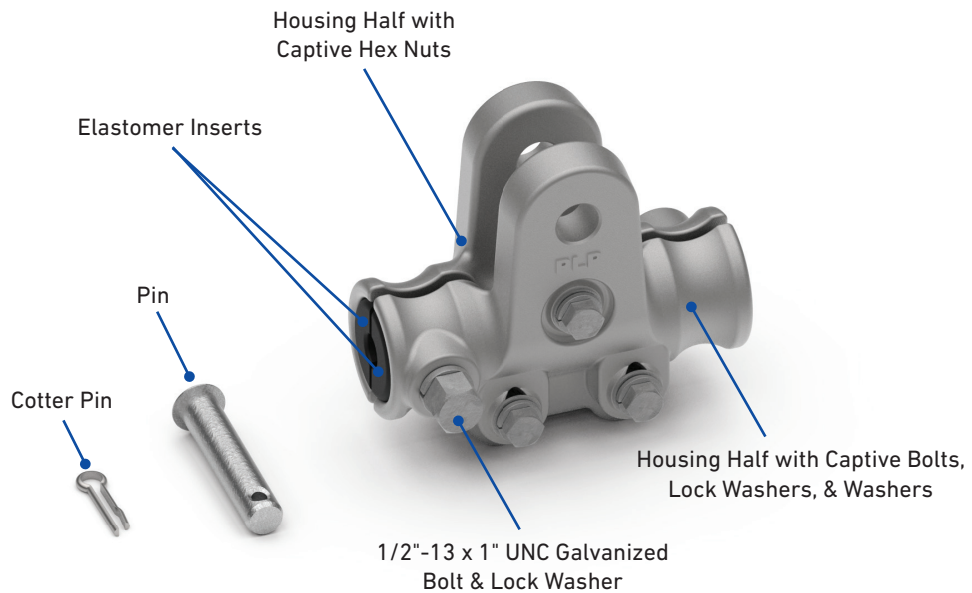


20,000 lb Clevis Eye
(Catalog Number: CE-5261)



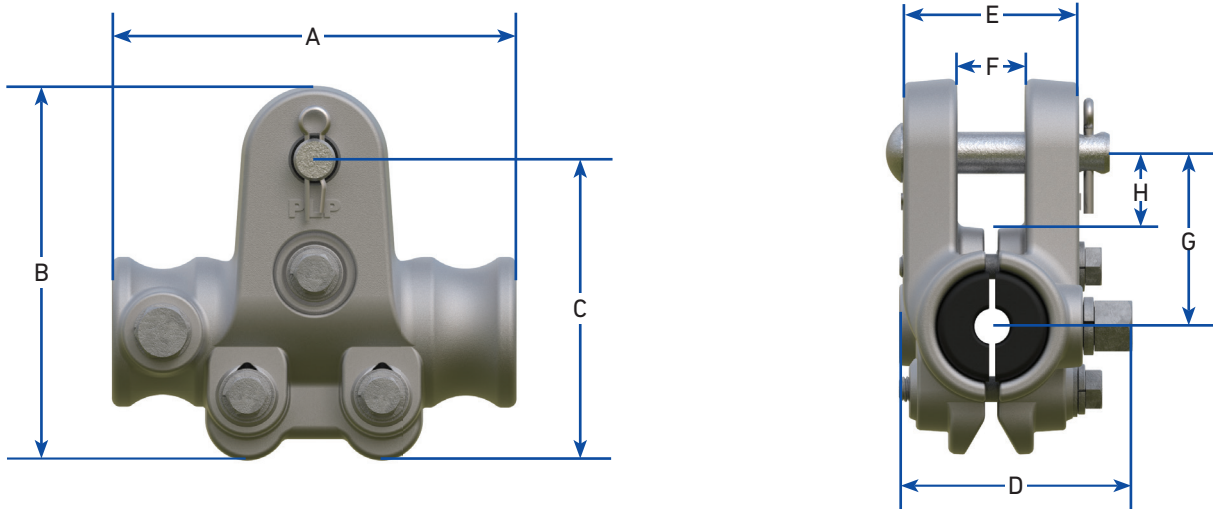
18" Yoke Plate
(Catalog Number: YP-5908)

COMPONENTS



DIMENSIONS

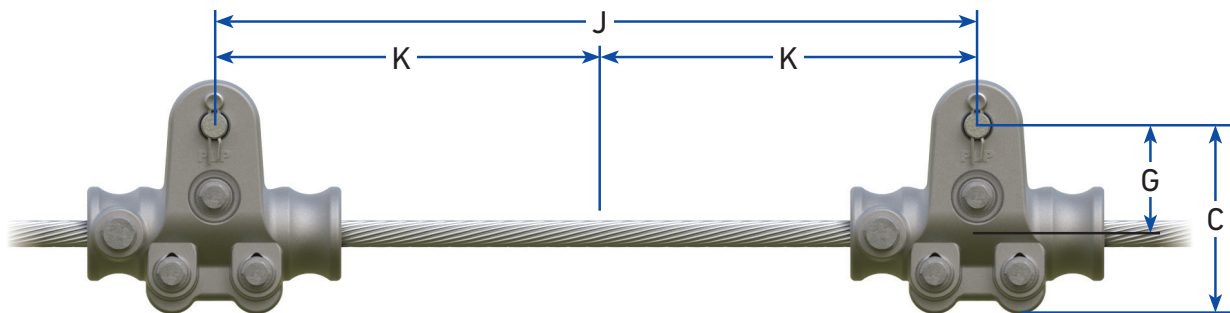
Single EZ Cushion Suspension



FIBERLIGN Single EZ Cushion Suspension

Dimensions in (mm)							
A	B	C	D	E	F	G	H
6 (152.4)	5-1/2 (139.7)	4-7/16 (112.7)	3-3/8 (85.7)	2-9/16 (65.1)	1 (25.4)	2-1/2 (63.5)	1-15/16 (49.0)

Double EZ Cushion Suspension

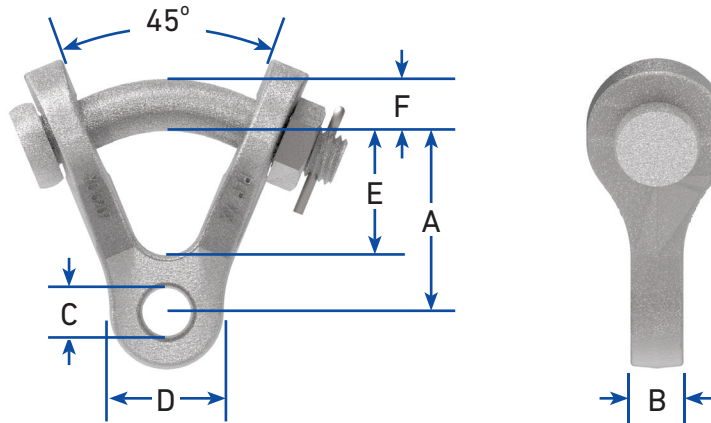


FIBERLIGN Double EZ Cushion Suspension

Dimensions in (mm)			
C	G	J	K
4-7/16 (112.7)	2-1/2 (63.5)	18 (457.2)	9 (228.6)

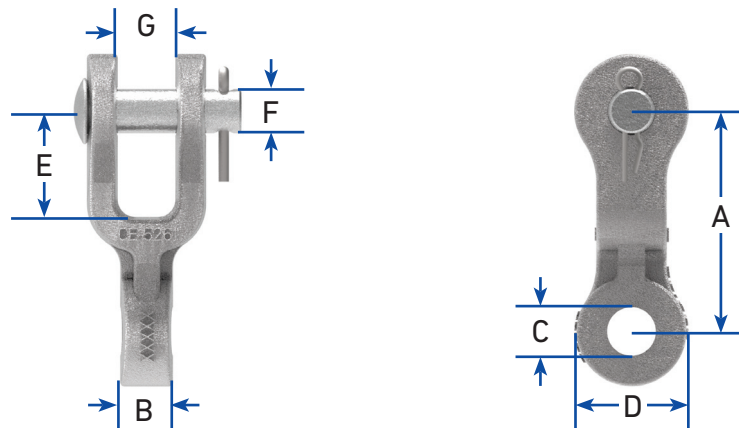
DIMENSIONS

Hardware Fittings



Y-Clevis Eye

Catalog Number	Dimensions						Maximum Vertical Load lb
	in (mm)						
	A	B	C	D	E	F	
YC-5207	2-7/16 (61.9)	3/4 (19.1)	11/16 (17.5)	1-5/8 (41.3)	1-5/8 (41.3)	3/4 (19.1)	20,000



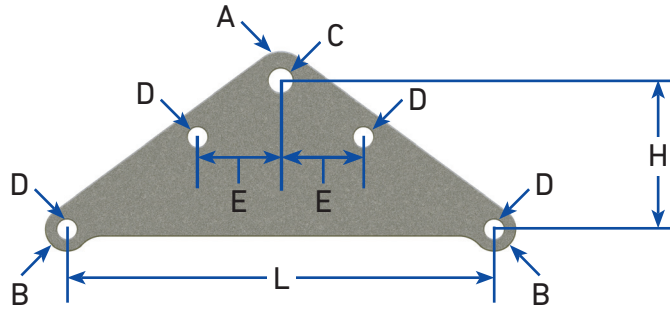
Clevis Eye

Catalog Number	Dimensions							Maximum Vertical Load lb
	in (mm)							
	A	B	C	D	E	F	G	
CE-5261	3-1/8 (79.4)	3/4 (19.1)	11/16 (17.5)	1-1/2 (38.1)	1-1/2 (38.1)	5/8 (15.9)	13/16 (20.6)	20,000



DIMENSIONS

Hardware Fittings

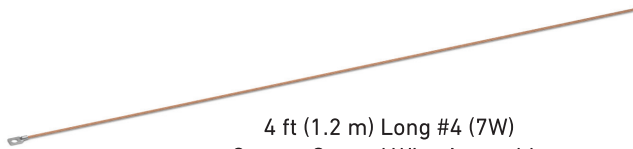


Yoke Plate

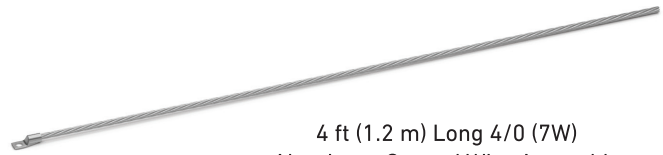
Catalog Number	Dimensions							Plate Thickness	Maximum Vertical Load
	in (mm)								
	A (Radius)	B (Radius)	C (Dia.)	D (Dia.)	E	L	H	in (mm)	lb
YP-5908	1-1/4 (31.8)	15/16 (23.8)	1 (25.4)	13/16 (20.6)	3-1/2 (88.9)	18 (457.2)	6-1/4 (158.8)	5/8 (15.9)	40,000

ACCESSORIES

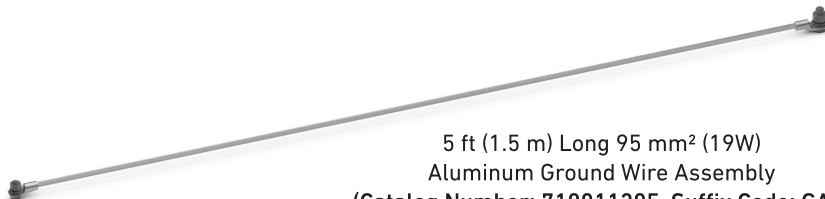
Catalog Number	Suffix Code	Description
710010016	G	4 ft (1.2 m) Long #4 (7W) Copper Ground Wire Assembly with One Terminal for 1/2" Bolt
710010294	GA	4 ft (1.2 m) Long 4/0 (7W) Aluminum Ground Wire Assembly with One Terminal for 1/2" Bolt
710011205	GA2	5 ft (1.5 m) Long 95mm ² (19W) Aluminum Ground Wire Assembly with One Terminal for M12 Bolt and One Terminal for M16 Bolt – Includes bolts, washers, lock washers, and hex nuts for each terminal
AS-5L	S2	30,000 lb Anchor Shackle
YC-5207	YC	20,000 lb Y-Clevis Eye
CE-5261	CE	20,000 lb Clevis Eye
CE-5261BNK	-	20,000 lb Clevis Eye with bolt, nut, and cotter pin in place of clevis pin
CE-5261 (Qty 2)	CEYP	(2) 20,000 lb Clevis Eyes and (1) 40,000 lb 18 in Yoke Plate - For Double Cushion Suspensions only
YP-5908 (Qty 1)		



4 ft (1.2 m) Long #4 (7W)
Copper Ground Wire Assembly
(Catalog Number: 710010016, Suffix Code: G)



4 ft (1.2 m) Long 4/0 (7W)
Aluminum Ground Wire Assembly
(Catalog Number: 710010294, Suffix Code: GA)



5 ft (1.5 m) Long 95 mm² (19W)
Aluminum Ground Wire Assembly
(Catalog Number: 710011205, Suffix Code: GA2)

ORDERING INFORMATION

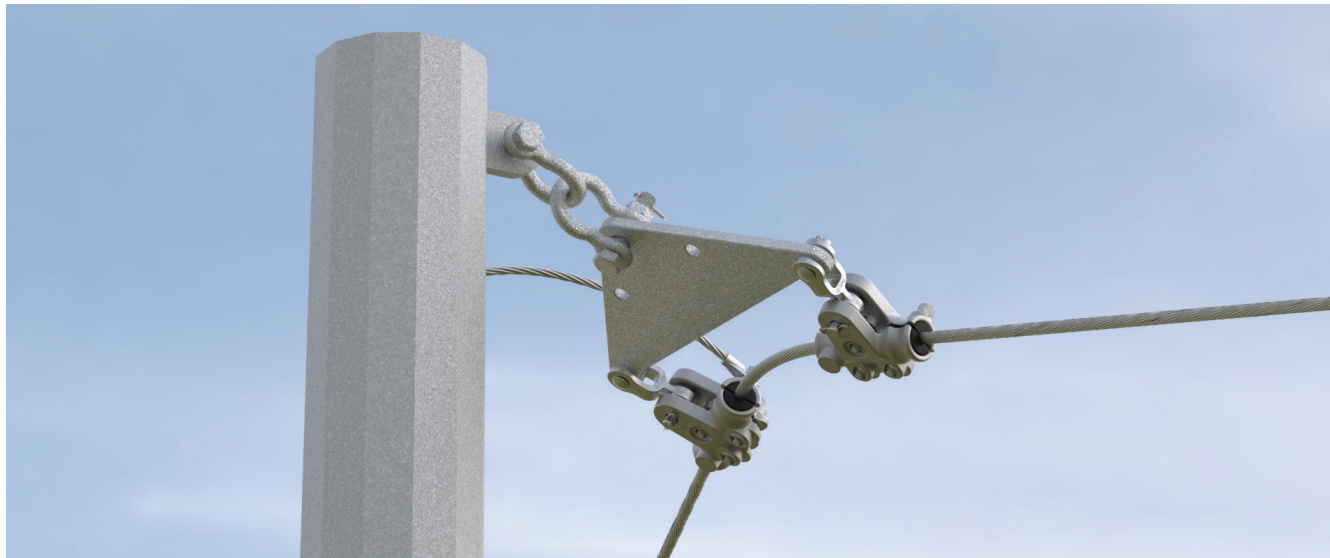
- Select the appropriate catalog number for the Cushion Suspension from the table below based on the diameter of the OPGW.
- Add the appropriate suffix code(s) to the Cushion Suspension catalog number to include a ground wire assembly and/or attachment fittings (ex: **Catalog Number: 4700300GYC, 4700300GACE, or 4700300GA2S2CEYP**) – see ACCESSORIES on the previous page for suffix codes.
- When adding suffix codes to the Cushion Clamp catalog number, make sure that the suffix code for the ground wire assembly comes **before** the suffix code(s) for the attachment fittings.
- For Double Cushion Suspension applications, order two identical Cushion Suspensions.

FIBERLIGN EZ Cushion Suspension

Catalog Number	Cable Diameter Range	
	in	mm
4700300	0.335 – 0.347	8.5 – 8.7
4700301	0.348 – 0.360	8.8 – 9.1
4700302	0.361 – 0.373	9.2 – 9.4
4700303	0.374 – 0.386	9.5 – 9.7
4700304	0.387 – 0.398	9.8 – 10.0
4700305	0.399 – 0.412	10.1 – 10.4
4700306	0.413 – 0.425	10.5 – 10.7
4700307	0.426 – 0.438	10.8 – 11.1
4700308	0.439 – 0.464	11.2 – 11.7
4700309	0.465 – 0.490	11.8 – 12.4
4700310	0.491 – 0.516	12.5 – 13.0
4700311	0.517 – 0.542	13.1 – 13.7
4700312	0.543 – 0.568	13.8 – 14.4
4700313	0.569 – 0.594	14.5 – 15.0
4700314	0.595 – 0.620	15.1 – 15.7
4700315	0.621 – 0.645	15.8 – 16.3
4700316	0.646 – 0.672	16.4 – 17.0
4700317	0.673 – 0.698	17.1 – 17.7
4700318	0.699 – 0.724	17.8 – 18.3
4700319	0.725 – 0.750	18.4 – 19.1



Single EZ Cushion Suspension Attached to Wood Pole



Double EZ Cushion Suspension Attached to Steel Pole