



COYOTE® 10" PEDESTAL COPPER WATERFALL HANDLE KIT INSTALLATION INSTRUCTIONS



IMPORTANT SAFETY INFORMATION

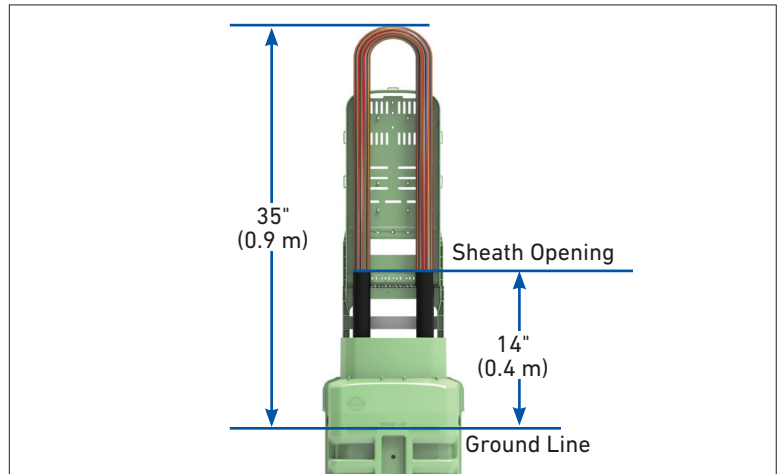
READ AND COMPLETELY UNDERSTAND ALL INSTRUCTIONS BEFORE INSTALLING PRODUCT. FAILURE TO FOLLOW THESE INSTRUCTIONS MAY RESULT IN PERSONAL INJURY OR DEATH.

This product is intended for use by trained technicians only. This product should not be used by anyone who is not familiar with and not trained to use it. When working in the area of energized lines, extra care should be taken to prevent accidental electrical contact. Be sure to wear proper safety equipment per your company protocol. These instructions are not intended to supersede any company construction or safety standards. These instructions are offered only to illustrate safe installation for the individual. PLP products are intended for the specified application only. Do not modify this product under any circumstances. Do not reuse or reinstall any PLP product unless that capability is expressly indicated in the product's Installation Instructions. For proper performance and personal safety, be sure to select the proper PLP product before installation. PLP products are precision devices. To ensure proper performance, they should be stored in cartons under cover and handled carefully.

PACKAGE COMPONENTS

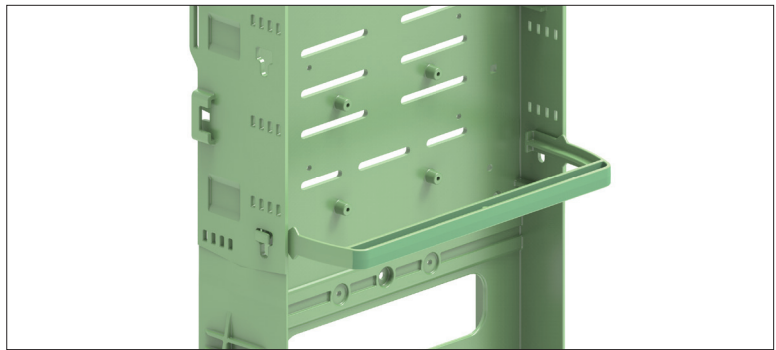


1. Copper Waterfall Handles (3)



Approximate Loop Length

- 1 Align the handles with the slots in the universal organizer. Holding the handle perpendicular to the organizer, install one side at a time into the slots.



- 2 Once installed into the slot, the handles will drop into the correct position. The integrated ledges on the organizer will keep the handles at this installed position.



- 3 Repeat this process for the other two handles.

Route the copper modules up the organizer and waterfall them over the handles at the appropriate locations.

