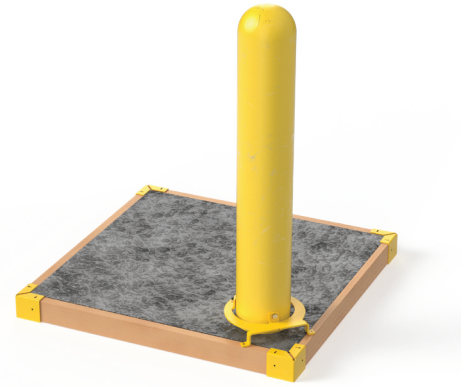




CONCRETE PAD CONSTRUCTION ACCESSORIES

INSTALLATION INSTRUCTIONS

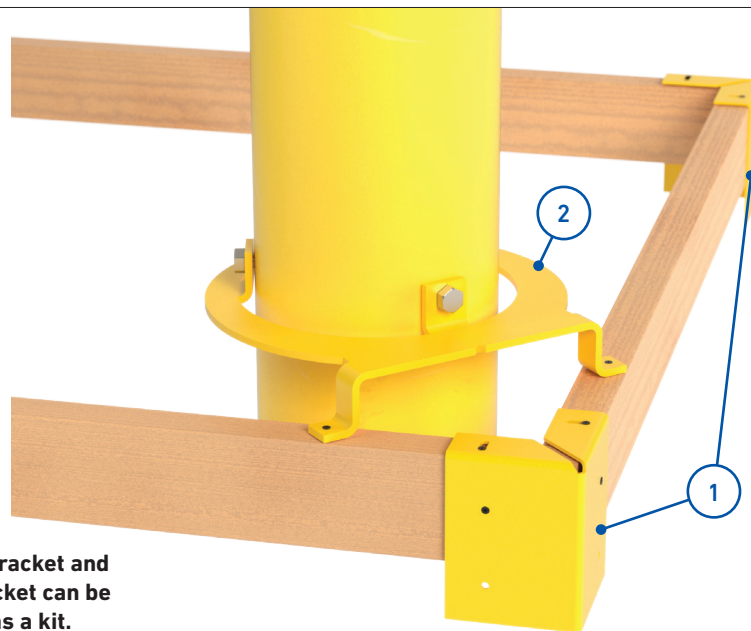


IMPORTANT SAFETY INFORMATION

READ AND COMPLETELY UNDERSTAND ALL INSTRUCTIONS BEFORE INSTALLING PRODUCT. FAILURE TO FOLLOW THESE INSTRUCTIONS MAY RESULT IN PERSONAL INJURY OR DEATH.

This product is intended for use by trained technicians only. This product should not be used by anyone who is not familiar with and not trained to use it. When working in the area of energized lines, extra care should be taken to prevent accidental electrical contact. Be sure to wear proper safety equipment per your company protocol. These instructions are not intended to supersede any company construction or safety standards. These instructions are offered only to illustrate safe installation for the individual. PLP products are intended for the specified application only. Do not modify this product under any circumstances. Do not reuse or reinstall any PLP product unless that capability is expressly indicated in the product's Installation Instructions. For proper performance and personal safety, be sure to select the proper PLP product before installation. PLP products are precision devices. To ensure proper performance, they should be stored in cartons under cover and handled carefully.

PACKAGE COMPONENTS



The 90-Degree Corner Bracket and the Bollard Support Bracket can be ordered individually or as a kit.

1. 90-Degree Corner Bracket
(for 2 x 4 or 2 x 6 lumber)
2. Bollard Support Bracket
(for 4" - 6" bollards)

Tools Required:

- Powered screwdriver
- Drywall screws (2" is preferred)
- Adjustable wrench or 9/16" socket
- Level
- Concrete stakes
- Tape Measure

WARNING

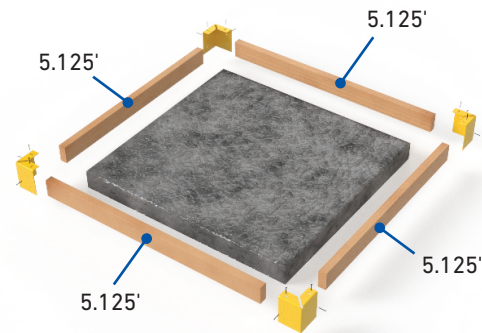
1. Always check with local codes to ensure compliance. You may need to adjust the guidelines provided here to comply with local regulations.
2. **ALWAYS CALL BEFORE YOU DIG:** 811 is the number used most in the U.S.
3. Use only qualified technicians for the task at hand. Improper installation can lead to equipment damage, injury, or even death of persons involved.

90-DEGREE CORNER BRACKET

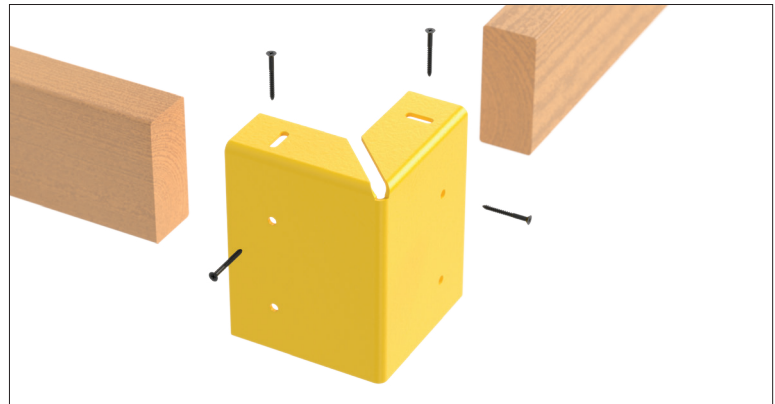
- 1 Cut wood to size for desired foundation.

EXAMPLE: Cut all lumber pieces to the same length and add the thickness of the lumber to the length. For a 5' x 5' pad using 2" x 4" lumber, the lumber should be cut to 5.125'. The ends can be alternated in the brackets to get a 5' x 5' square.

Example: 5' x 5' concrete pad

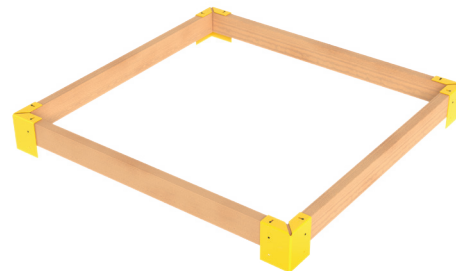


- 2 Align the cut lumber into the corners of the brackets butting them up against the other lumber piece to form a 90 degree angle. With a measuring tape, verify the size of the pad by measuring the distance between opposite lumber pieces. Secure with 2" drywall screws.



- 3 Level the frame using concrete stakes.

NOTE: If using the PLP EV Foundation, level to the top of the cast aluminum lid. Refer to SP3663.



BOLLARD SUPPORT BRACKET

4

Determine the location of the bollard. Prepare the ground underneath before positioning the bollard.

5

Corner Bollard Placement

Place the Bollard Support Bracket in the corner of the framing and secure it to the framing lumber using drywall screws. (Figure 1)

Interior Bollard Placement

Secure an additional piece of lumber across the framing and secure the Bollard Support Bracket in the desired location using drywall screws. (Figure 2)

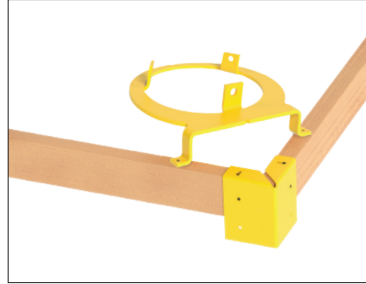


Figure 1: Corner Bollard Placement



Figure 2: Interior Bollard Placement

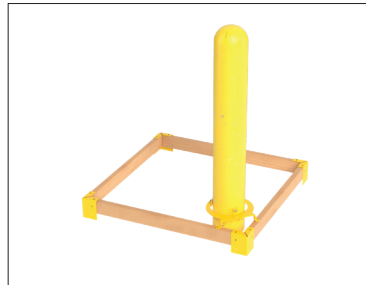
6

Install the securing bolts on the bracket to the most open position. Plastic anti-scratch protection caps can be installed on the ends of the bolts.

7

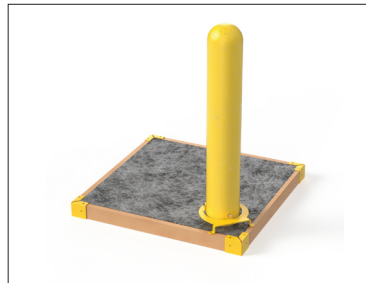
Position the bollard into the Bollard Support Bracket and square it up with a level. Tighten the bolts until the bollard is secure.

Repeat until all bollards within the framing are positioned and secured with Support Brackets.



8

Add necessary rebar and pour concrete. Bollard Support Brackets may be removed after concrete finishing work is complete.





GLOBAL HEADQUARTERS
660 BETA DRIVE
CLEVELAND, OH 44143

+1 440 461 5200
INFO@PLP.COM
PLP.COM