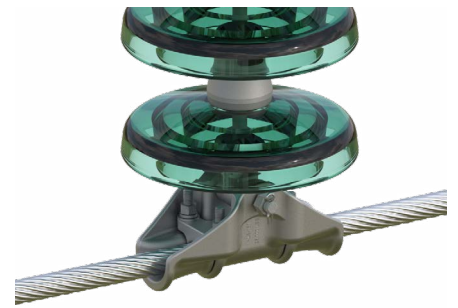




ALUMINUM SUSPENSION CLAMP INSTALLATION INSTRUCTIONS

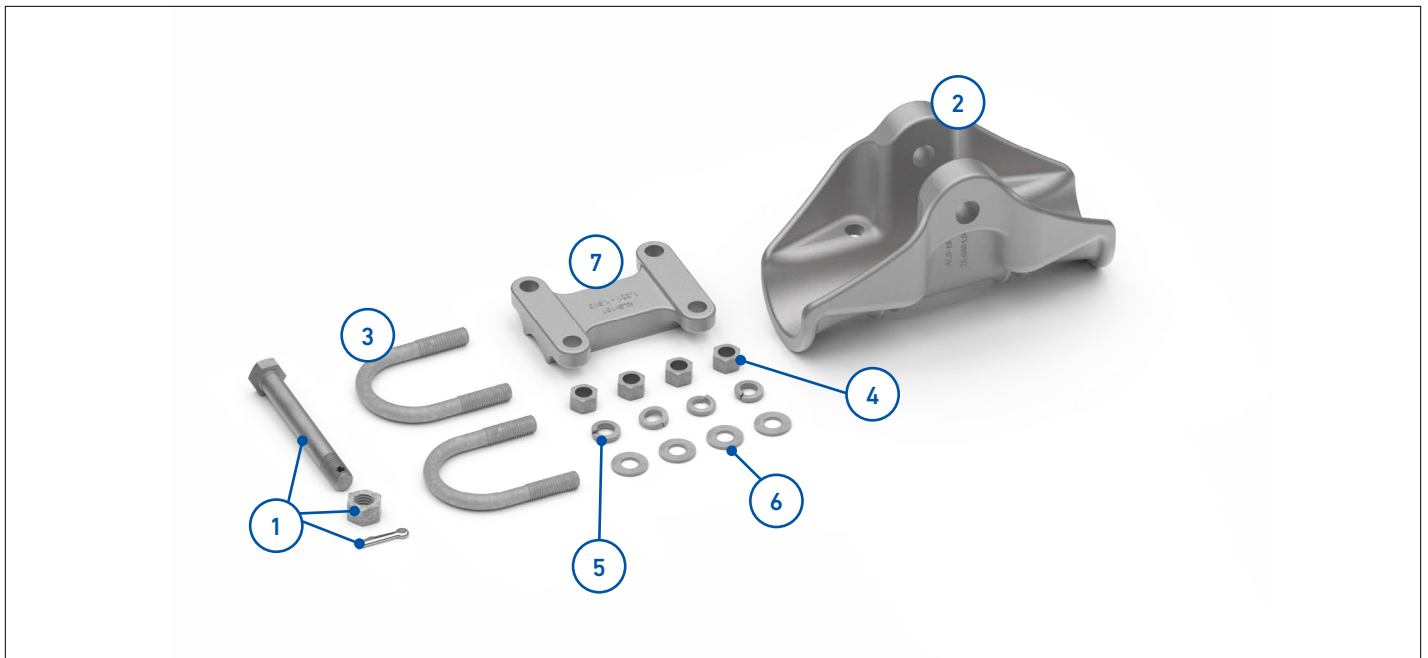


IMPORTANT SAFETY INFORMATION

READ AND COMPLETELY UNDERSTAND ALL INSTRUCTIONS BEFORE INSTALLING PRODUCT. FAILURE TO FOLLOW THESE INSTRUCTIONS MAY RESULT IN PERSONAL INJURY OR DEATH.

This product is intended for use by trained technicians only. This product should not be used by anyone who is not familiar with and not trained to use it. When working in the area of energized lines, extra care should be taken to prevent accidental electrical contact. Be sure to wear proper safety equipment per your company protocol. These instructions are not intended to supersede any company construction or safety standards. These instructions are offered only to illustrate safe installation for the individual. PLP products are intended for the specified application only. Do not modify this product under any circumstances. Do not reuse or reinstall any PLP product unless that capability is expressly indicated in the product's Installation Instructions. For proper performance and personal safety, be sure to select the proper PLP product before installation. PLP products are precision devices. To ensure proper performance, they should be stored in cartons under cover and handled carefully.

PACKAGE COMPONENTS



1. Bolt, Nut and Cotter Pin
2. ALS Body
3. U-Bolts (2)
4. Nuts (4)
5. Lock Washers (4)
6. Flat Washers (4)
7. ALS Keeper

SP3414-2

1 Remove the pin and cotter key or bolt, nut, and cotter key. Completely disengage the nuts and washers holding the u-bolts and the keeper together and lift the keeper out.

2 Plumb suspension and mark the conductor or PLP Armor Rods where the center of the clamp will fall using a felt pen or lumber crayon. **DO NOT** notch conductor or Armor Rod strands. Be sure that the surface that will be within the Aluminum Suspension (ALS) Clamp is free from dirt or oxidation. Wire brush clean, if required. This is especially important if the ALS is installed on an existing conductor.

NOTE: If placing PLP Armor Rods on the conductor before installing the ALS, ensure that the clamp is sized for the built up diameter and that the Armor Rods are installed correctly. For installation of Armor Rods, please refer to SP2052.



3 Tighten 1/2" Bolt with flat washer, lock washer, and nut until lock washers are flat. **DO NOT** exceed torque value specified in the table in Step 4.



- 4** Evenly tighten all four nuts onto the u-bolts with a ratchet wrench.
- Tightening of the bolts should be completed in a circular pattern. When tightening with the torque wrench, start with any bolt but only tighten partially before moving on to the other bolts. This should be repeated until the proper bolt torque is achieved based on values in the table below.

Clamp Range	Bolt Torque
0.200" - 0.470" (5.1 - 11.9 mm)	11 ft-lbs (15 Nm)
0.471" - 0.670" (11.9 - 17.0 mm)	19 ft-lbs (26 Nm)
0.671" - 0.910" (17.0 - 23.1 mm)	40 ft-lbs (55 Nm)
0.911" - 1.220" (23.1 - 31.0 mm)	40 ft-lbs (55 Nm)
1.221" - 1.810" (31.0 - 46.0 mm)	40 ft-lbs (55 Nm)
1.811" - 2.379" (46.0 - 60.4 mm)	40 ft-lbs (55 Nm)
2.380" - 2.850" (60.4 - 72.4 mm)	40 ft-lbs (55 Nm)



- 5** Re-check the bolts after torquing to ensure that they are properly tightened. Attach the ALS to the mating string hardware component.





GLOBAL HEADQUARTERS
660 BETA DRIVE
CLEVELAND, OH 44143

+1 440 461 5200
INFO@PLP.COM
PLP.COM