



ARMOR-GRIP® SUSPENSION

INSTALLATION INSTRUCTIONS

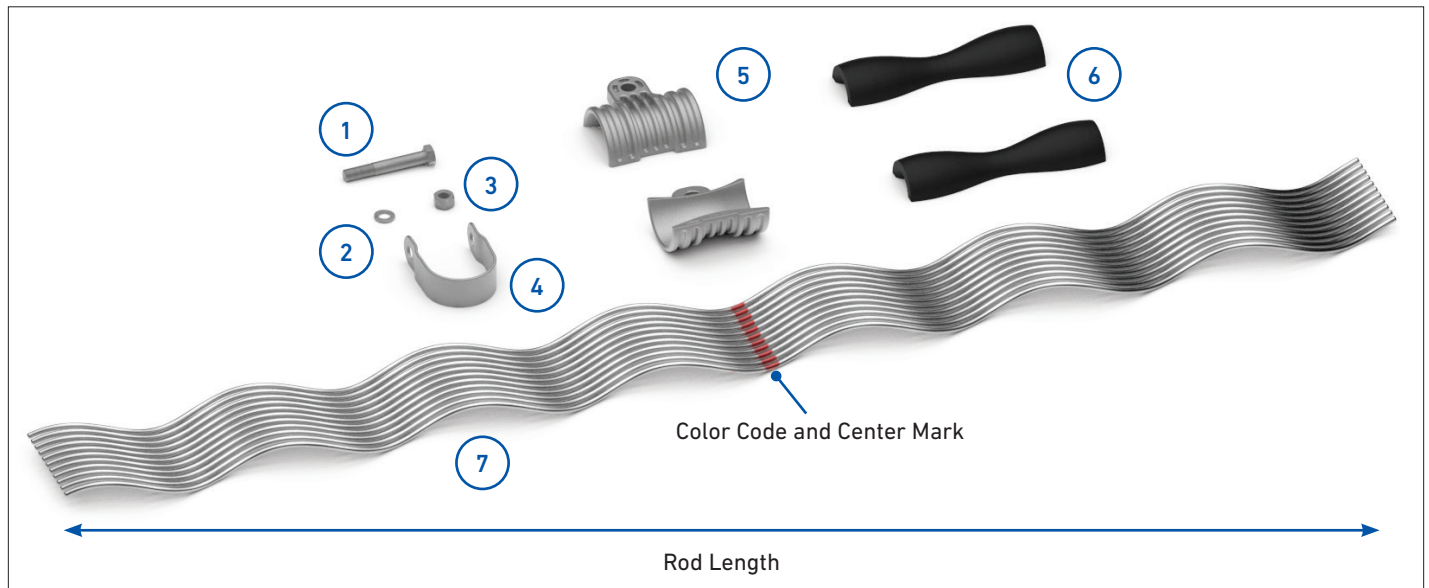


IMPORTANT SAFETY INFORMATION

READ AND COMPLETELY UNDERSTAND ALL INSTRUCTIONS BEFORE INSTALLING PRODUCT. FAILURE TO FOLLOW THESE INSTRUCTIONS MAY RESULT IN PERSONAL INJURY OR DEATH.

This product is intended for use by trained technicians only. This product should not be used by anyone who is not familiar with and not trained to use it. When working in the area of energized lines, extra care should be taken to prevent accidental electrical contact. Be sure to wear proper safety equipment per your company protocol. These instructions are not intended to supersede any company construction or safety standards. These instructions are offered only to illustrate safe installation for the individual. PLP products are intended for the specified application only. Do not modify this product under any circumstances. Do not reuse or reinstall any PLP product unless that capability is expressly indicated in the product's Installation Instructions. For proper performance and personal safety, be sure to select the proper PLP product before installation. PLP products are precision devices. To ensure proper performance, they should be stored in cartons under cover and handled carefully.

PACKAGE COMPONENTS



1. Bolt (1)

2. Lock Washer (1)

3. Lock Nut (1)

4. Strap (1)

5. Housing (2)

6. AGS Insert (2)

7. ARMOR-GRIP Suspension Rods (1 set)

Tools Required:

- Two wrenches are required to torque down the nut and bolt, since the bolt has no backing force until the lockwasher is flattened.

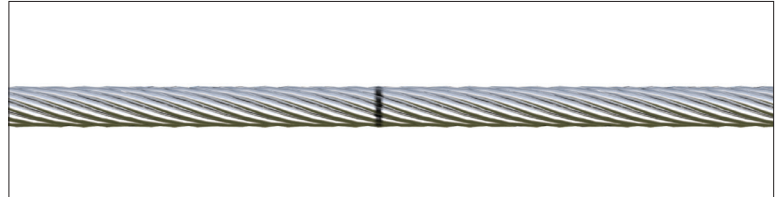
GENERAL NOTES

1. ARMOR-GRIP® Suspension Rods are precision devices. To ensure a proper assembly, they should be stored and handled carefully. To prevent distortion and damage, they should be installed as illustrated.
2. ARMOR-GRIP Suspension Rods are **NOT** interchangeable with standard Armor Rods.
3. On some sizes of ARMOR-GRIP Suspension, there will appear to be enough gap between rods to apply an additional rod. BUT all AGS Rods are packed in sets. Apply only the number of rods in the set.
4. Maximum line angle of deviation:
 - a. The single support ARMOR-GRIP Suspension may be used on line angles up through 30°.
 - b. Use the double support ARMOR-GRIP Suspension for line angles between 30° and 60°. Consult the Factory for an engineering recommendation regarding this application.
5. ARMOR-GRIP Suspension Rods are factory matched; do not intermix rods from different sets.
6. The alignment of the rod ends should be maintained within 2 inches for voltages of 230 kV and lower; for 345 kV and above, the alignment of the ends of the rods should be maintained within 3/4 inch.

1

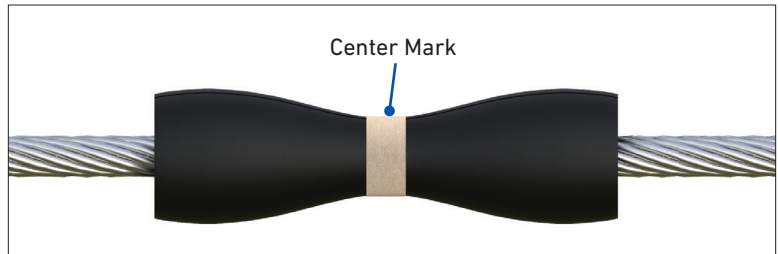
Plumb insulator string and mark conductor at center of sheave. Use a felt marking pen or lumber crayon; do not scratch conductor. Lift the conductor beyond the ends of the rods to allow enough clearance for the application

NOTE: For corrosive coastal environments, the application of a liberal amount of a conductive oxide inhibitor to the conductor under the AGS Neoprene Inserts will minimize the possibility of corrosive contaminant build-up.



2

Align center marks of AGS Neoprene Inserts with center mark on conductor and tape in place with a thin layer of tape.

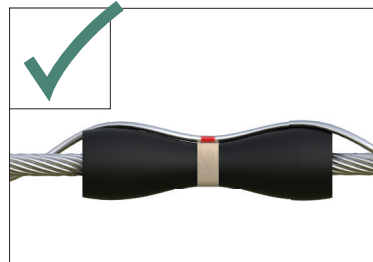


- 3 Center one AGS Rod on the insert. Apply sufficient length of rod (approximately two wraps) so that it will stay on the conductor.

DO NOT DISTORT RODS.

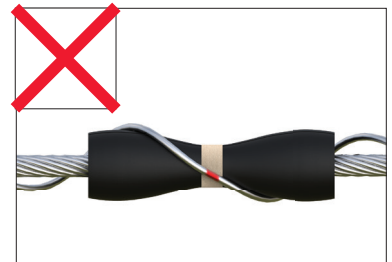


Proper and improper application of one rod shown to the right.



Correct

MAKE CERTAIN THAT THERE IS NO GAP BETWEEN THE ROD AND INSERT.

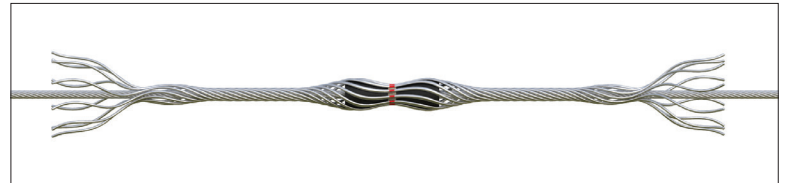


Incorrect

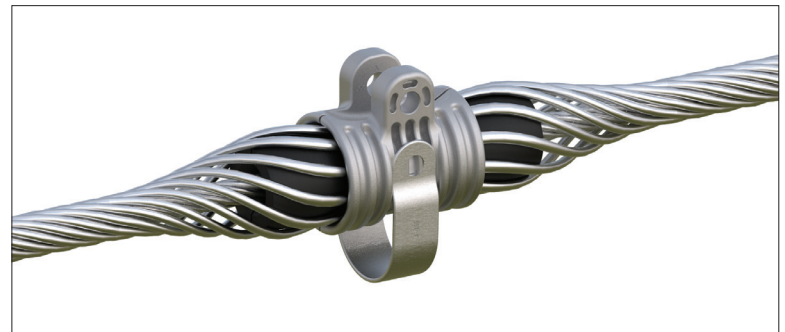
DO NOT WRAP ROD AROUND THE NEOPRENE INSERT AS SHOWN ABOVE.

- 4 Apply all remaining rods evenly around neoprene insert. Make sure that no rods are crossed. Each AGS Rod can be applied completely, or all rods can be applied partially as shown in the image above. **After installing all rods, ensure the rod ends are securely snapped into place before proceeding.**

NOTE: Installing rods opposite of one another (i.e. the first rod on top, the second rod on bottom) can help keep the AGS insert halves aligned.



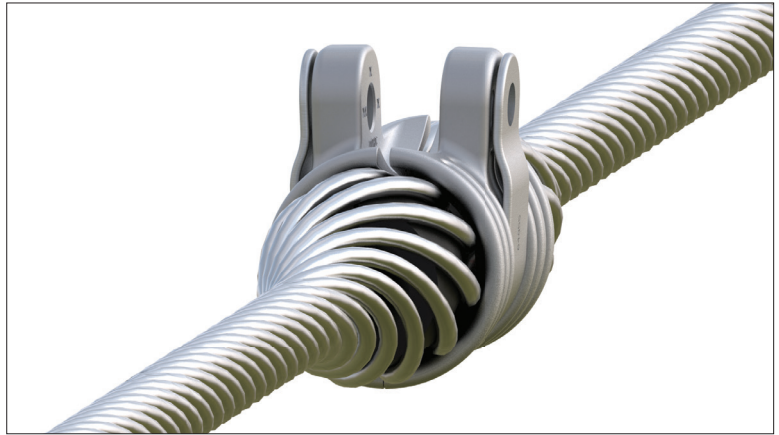
- 5 Place the two halves of the AGS Housing on either side of the center assembly. Slide the AGS Strap into position and with the heel of the hand, tap firmly into place.



6

Spread the ears of the housing and tap strap into place again. This will align the holes so that the bolt may be inserted easily.

NOTE: The bolt may be used to help align the strap and housing holes.



7

Add an appropriately specified insulator connection fitting between the ears, and insert the bolt. Tighten the nut until the lock washer becomes almost flat.

CAUTION

DO NOT OVERTIGHTEN. DO NOT SQUEEZE EARS OF AGS HOUSING AGAINST FITTING.

