



CUSHION-GRIP® SUPPORT INSTALLATION INSTRUCTIONS

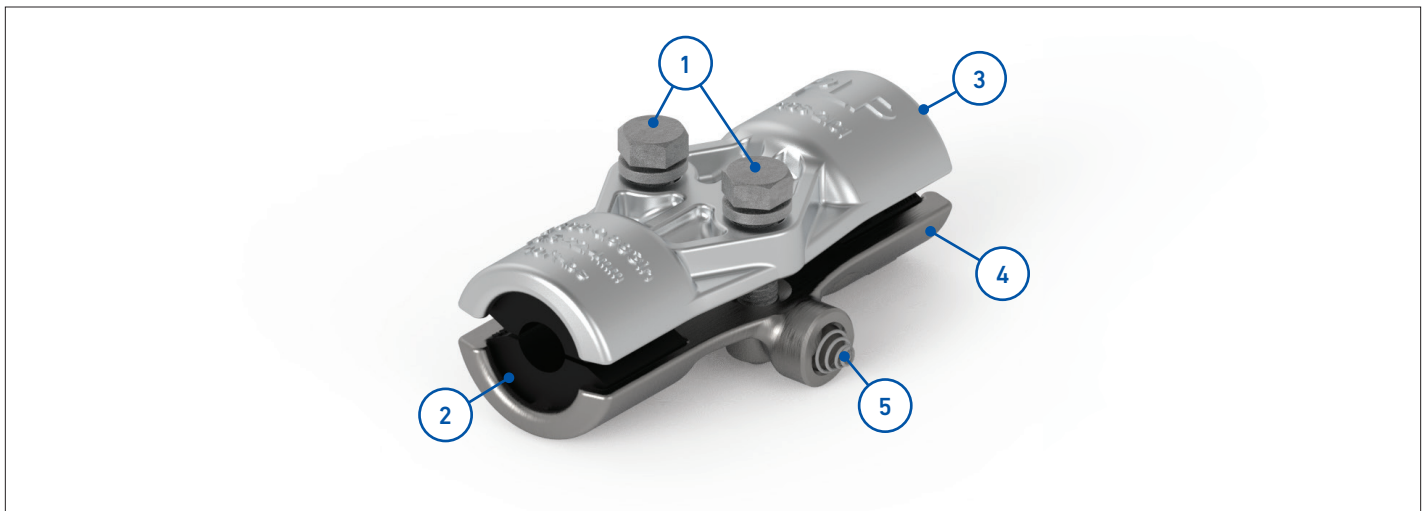


IMPORTANT SAFETY INFORMATION

READ AND COMPLETELY UNDERSTAND ALL INSTRUCTIONS BEFORE INSTALLING PRODUCT. FAILURE TO FOLLOW THESE INSTRUCTIONS MAY RESULT IN PERSONAL INJURY OR DEATH.

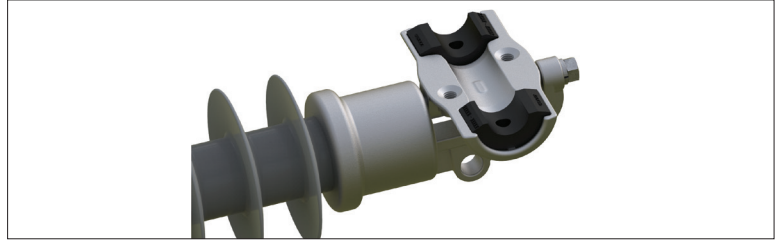
This product is intended for use by trained technicians only. This product should not be used by anyone who is not familiar with and not trained to use it. When working in the area of energized lines, extra care should be taken to prevent accidental electrical contact. Be sure to wear proper safety equipment per your company protocol. These instructions are not intended to supersede any company construction or safety standards. These instructions are offered only to illustrate safe installation for the individual. PLP products are intended for the specified application only. Do not modify this product under any circumstances. Do not reuse or reinstall any PLP product unless that capability is expressly indicated in the product's Installation Instructions. For proper performance and personal safety, be sure to select the proper PLP product before installation. PLP products are precision devices. To ensure proper performance, they should be stored in cartons under cover and handled carefully.

PACKAGE COMPONENTS



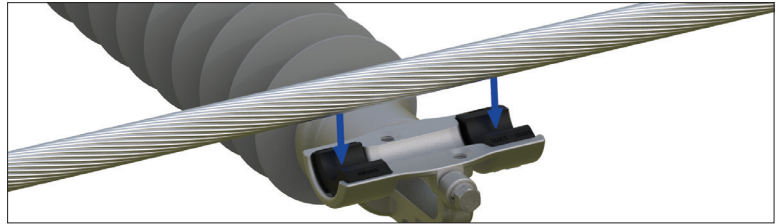
1. Bolt and Lock Washer (2)
2. Elastomer Inserts (4)
3. Aluminum Alloy Keeper
4. Ductile Iron Galvanized Base
5. Stainless Steel Spring

- 1 Remove the keeper. Note the bolts remain captive in the keeper. Install the base into the clamp-top trunnion of the post insulator and tighten the trunnion bolt, capturing the CUSHION-GRIP® Support base. Be careful not to lose the spring.



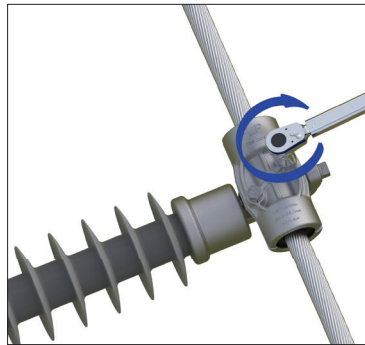
- 2 Lay the conductor in the groove of the clamp base.

NOTE: For extremely corrosive coastal environments, applying a liberal amount of a conductive oxide inhibitor to the conductor within the CUSHION-GRIP Support will minimize the possibility of corrosive contaminant build-up.

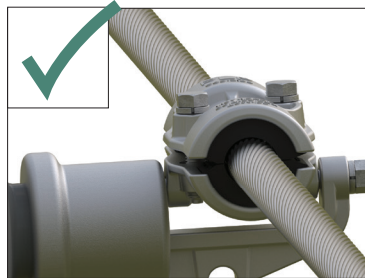


- 3 Reinstall the CUSHION-GRIP Support keeper to capture the conductor. Tighten the two bolts of the keeper evenly, keeping the housing halves parallel (i.e., maintaining equal gaps between the housing halves on both sides).

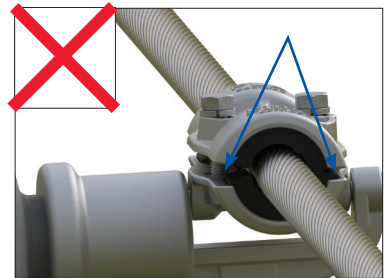
NOTE: Tightening of the bolts should be completed in an alternating pattern. When tightening the first bolt with the torque wrench, only partially tighten the first bolt, then move to the second and partially tighten to ensure an equal gap between the housing halves. This should be repeated several times until the recommended torque value is reached based on the values in the table.



Clamp Range in (mm)	Bolt Torque ft-lb (Nm)
0.312 - 0.608 (7.9 - 15.4)	25 (34)
0.609 - 0.883 (15.4 - 22.4)	40 (54)
0.884 - 1.196 (22.4 - 30.4)	40 (54)
1.197 - 1.545 (30.4 - 39.2)	40 (54)



Correct Installation
The Keeper is level with the base.



Incorrect Installation
The Keeper is not level with the base.

- 4 Completed application of the CUSHION-GRIP® Support.

