



FIBERLIGN® LIMITED TENSION DEAD-END BRACKET

The **FIBERLIGN Limited Tension Dead-End Bracket** is designed to maximize pole utilization by consolidating cable attachment points at double dead-end locations. By supporting two FIBERLIGN Limited Tension Dead-Ends from a single attachment point, the bracket minimizes occupied pole space while reducing the required hardware, cuts back on pole attachment fees and minimizes installation time and costs. Integrated anchor shackles accommodate standard PLP extension link hardware, eliminating the need for additional pole-mounted components. The bracket installs using a standard 5/8" through bolt, double-arming bolt, or up to 1-1/4" band, providing a reduced footprint while simplifying installation.

FEATURES AND BENEFITS

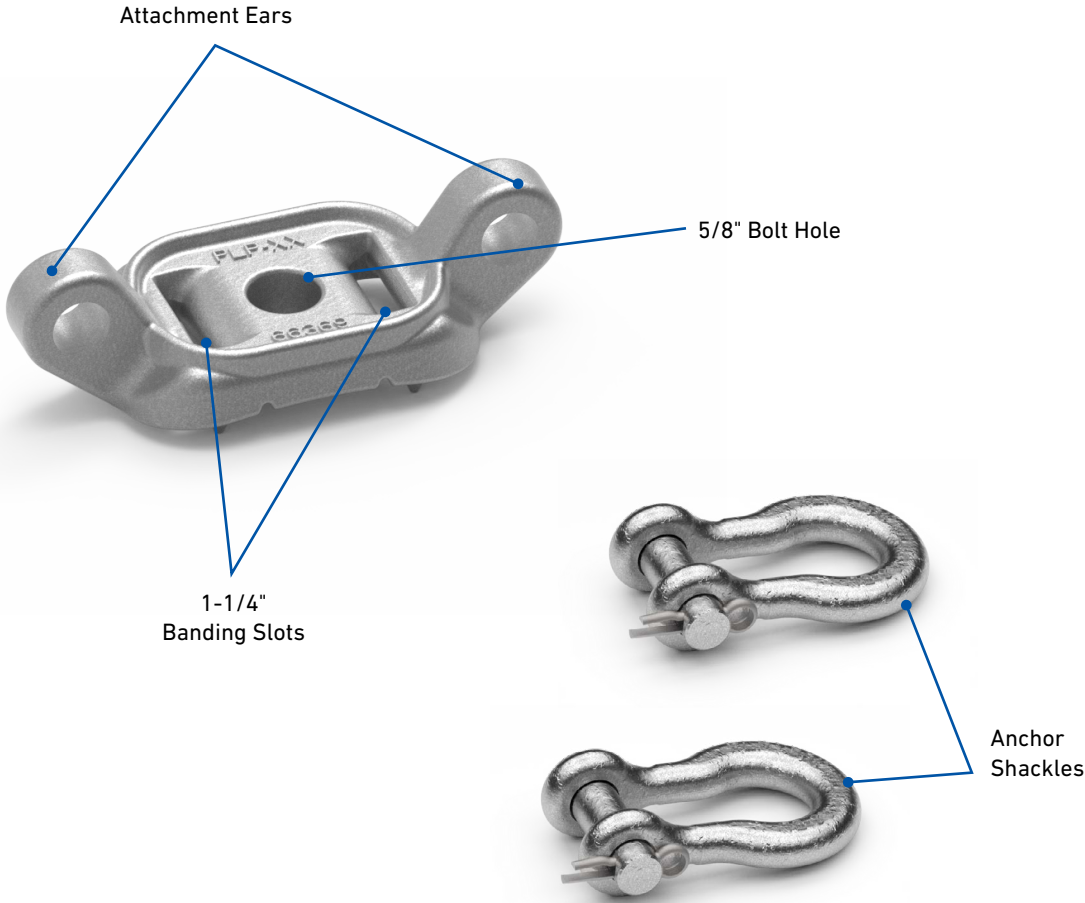
- Supports two Limited Tension Dead-ends for ADSS at a single pole attachment point
- Reduces pole space and hardware requirements at double dead-end locations
- Eliminates the need for a secondary attachment at dead-end locations, cutting back pole attachment fees while minimizing installation time
- Designed to maintain the appropriate bend radius of ADSS cables, accommodating angles up to 90°
- Attaches using a single 5/8" through bolt, 5/8" double-arming bolt, or 1-1/4" wide banding
- Constructed of ductile iron, hot-dip galvanized per ASTM A-153 for corrosion resiliency



SPECIFICATIONS

Characteristic	Specification
Maximum Allowable Load at each ear	2,500 lb

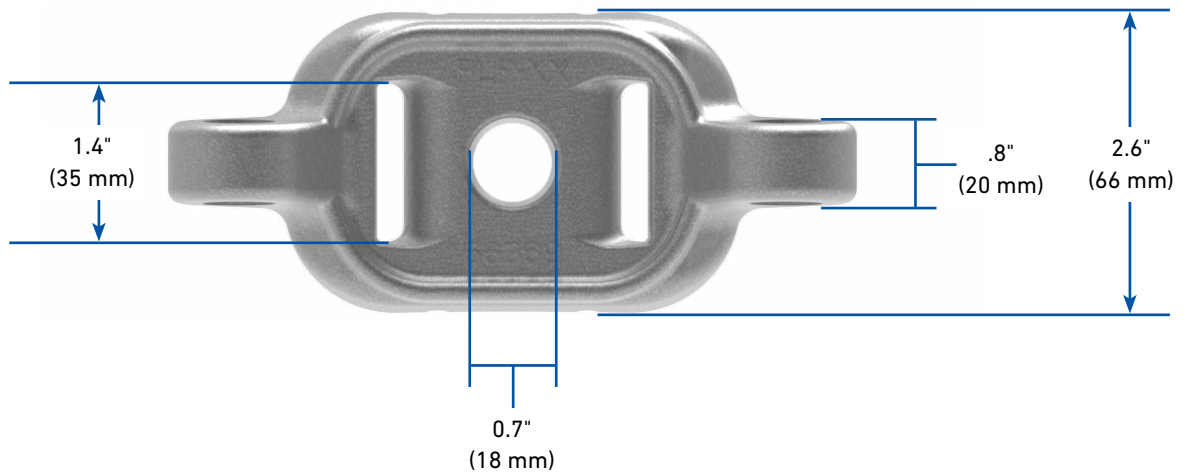
COMPONENTS



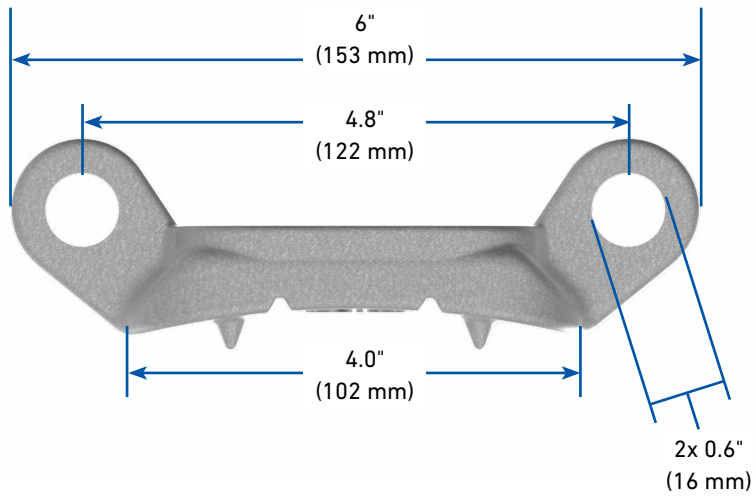


DIMENSIONS

Front View



Bottom View

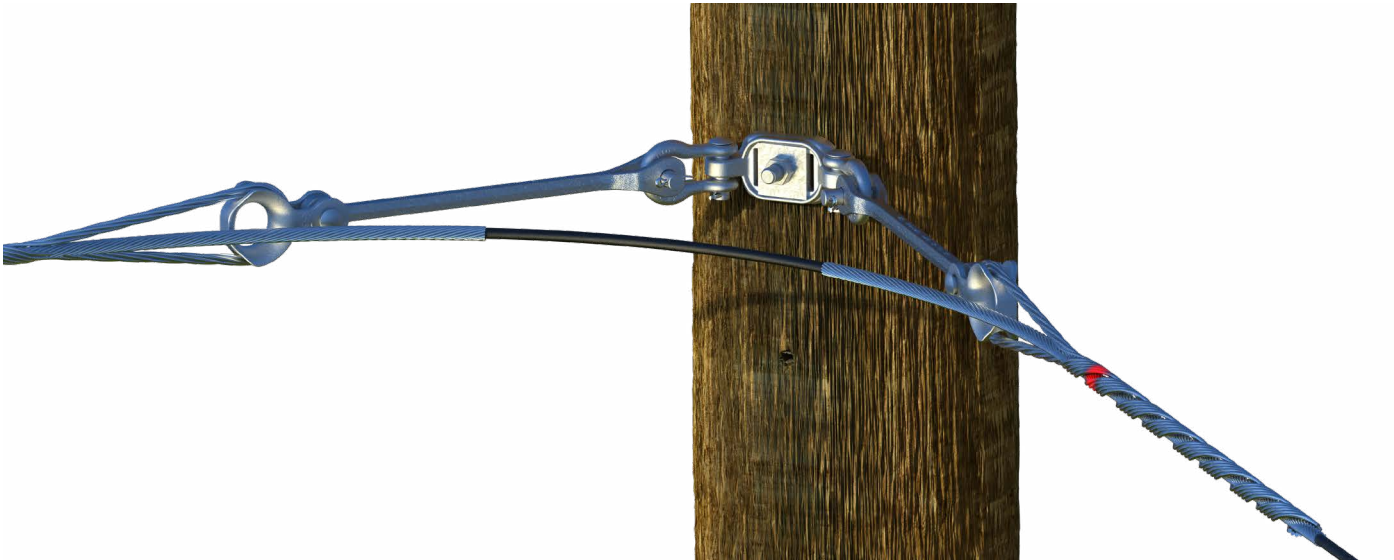




ORDERING INSTRUCTIONS

The FIBERLIGN Limited Tension Dead-End Bracket is designed for use with PLP Limited Tension Dead-Ends with Thimble Clevis and Extension Link attachment hardware. Dead-end assemblies are sold separately and must be specified independently from the bracket. Each bracket can support two Limited Tension Dead-End assemblies. For assistance in selecting the appropriate dead-end design, please contact PLP Technical Support.

Catalog Number	Description	Included with Assembly
LTB-01	Limited Tension Dead-End Bracket	(1) Limited Tension Dead-End Bracket (2) Anchor Shackles
28720XXC1E1	Limited Tension Dead-End	(1) Limited Tension Dead-End with SRRs (1) Thimble Clevis (1) Extension Link and Eye Nut



FIBERLIGN Limited Tension Dead-End Bracket with
(2) FIBERLIGN Limited Tension Dead-Ends, Thimble Clevises, and Extension Links