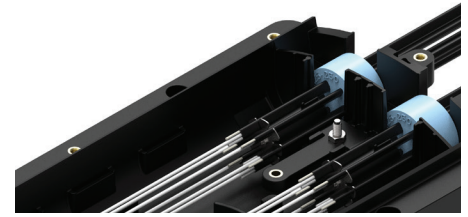




COYOTE® IN-LINE RUNT FLAT DROP CABLE RETENTION

INSTALLATION INSTRUCTIONS



IMPORTANT SAFETY INFORMATION

READ AND COMPLETELY UNDERSTAND ALL INSTRUCTIONS BEFORE INSTALLING PRODUCT. FAILURE TO FOLLOW THESE INSTRUCTIONS MAY RESULT IN PERSONAL INJURY OR DEATH.

This product is intended for use by trained technicians only. This product should not be used by anyone who is not familiar with and not trained to use it. When working in the area of energized lines, extra care should be taken to prevent accidental electrical contact. Be sure to wear proper safety equipment per your company protocol. These instructions are not intended to supersede any company construction or safety standards. These instructions are offered only to illustrate safe installation for the individual. PLP products are intended for the specified application only. Do not modify this product under any circumstances. Do not reuse or reinstall any PLP product unless that capability is expressly indicated in the product's Installation Instructions. For proper performance and personal safety, be sure to select the proper PLP product before installation. PLP products are precision devices. To ensure proper performance, they should be stored in cartons under cover and handled carefully.

PACKAGE COMPONENTS

6-PORT VERSION



Catalog Number: 8004180 (6-Port Version)

- | | |
|----------------------------------|--------------------------------------|
| 1. 6- Hole Silicone Grommets (2) | 5. Bobbins (2) |
| 2. Silicone Lubricant (2) | 6. Cable Retention Clips (2) |
| 3. Grommet Plugs (12) | 7. Bobbin Screws (Phillips Head) (2) |
| 4. Bracket (1) | |

PACKAGE COMPONENTS

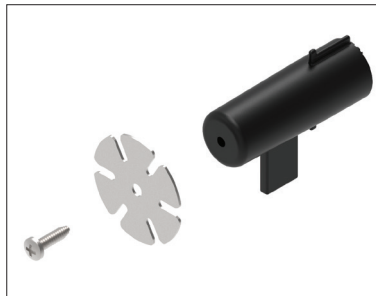
8-PORT VERSION



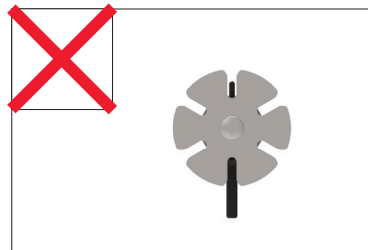
Catalog Number: 8004181 (8-Port Version)

- | | | |
|---------------------------------|----------------|--------------------------------------|
| 1. 8-Hole Silicone Grommets (2) | 4. Bracket (1) | 6. Cable Retention Clips (2) |
| 2. Silicone Lubricant (2) | 5. Bobbins (2) | 7. Bobbin Screws (Phillips Head) (2) |
| 3. Grommet Plugs (16) | | |

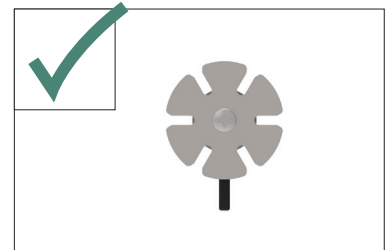
- 1** Screw a Cable Retention Clip into each Bobbin with the supplied screws. Ensure the bobbin tab is not aligned with any of the slots on the clip.



6-Port

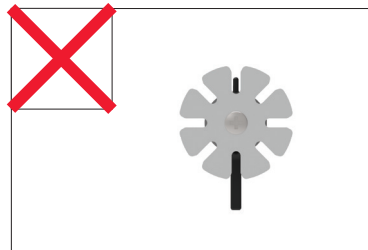


Incorrect Installation

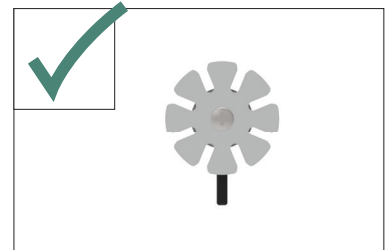


Correct Installation

8-Port



Incorrect Installation



Correct Installation

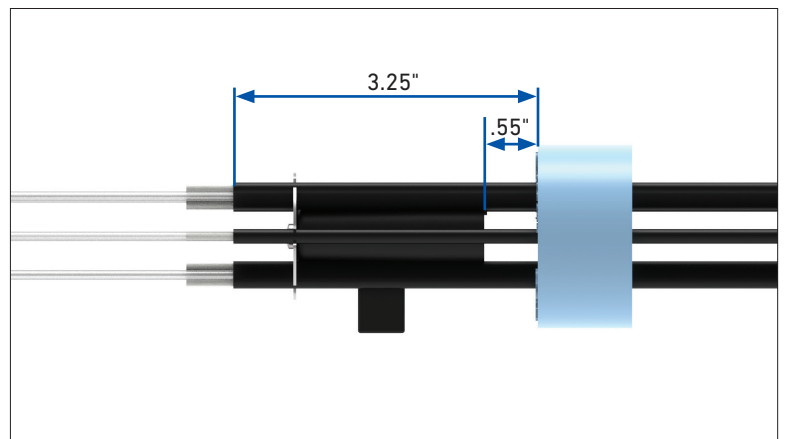
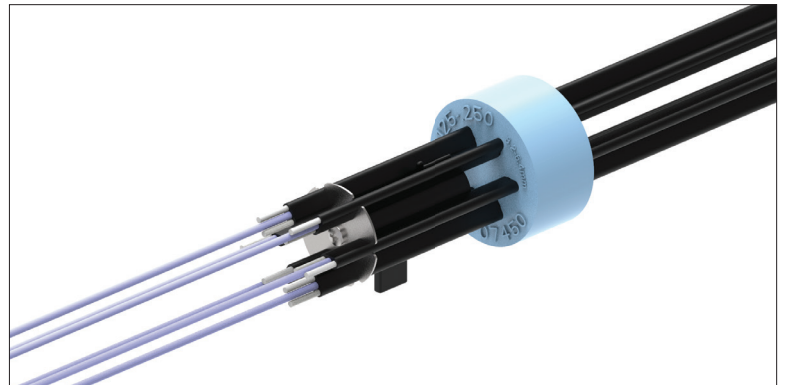
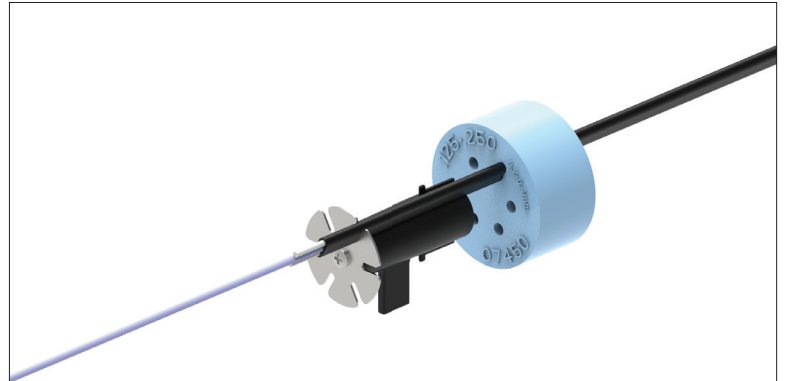
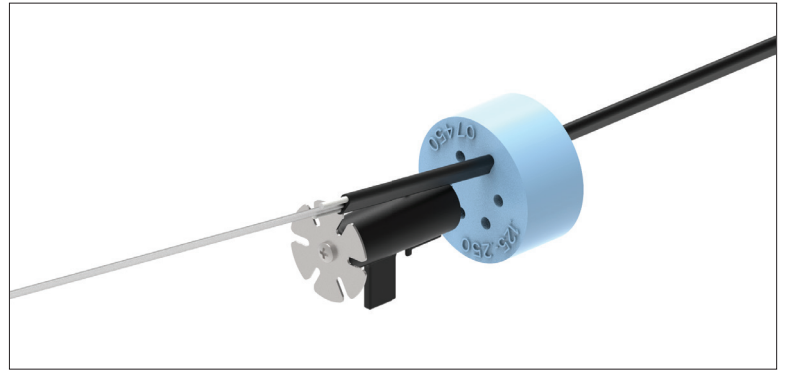
2

Trim the flat-drop strength members back as close to the sheath opening as possible. Insert the drop cables into each grommet, as well as the corresponding slot on each cable retention clip.

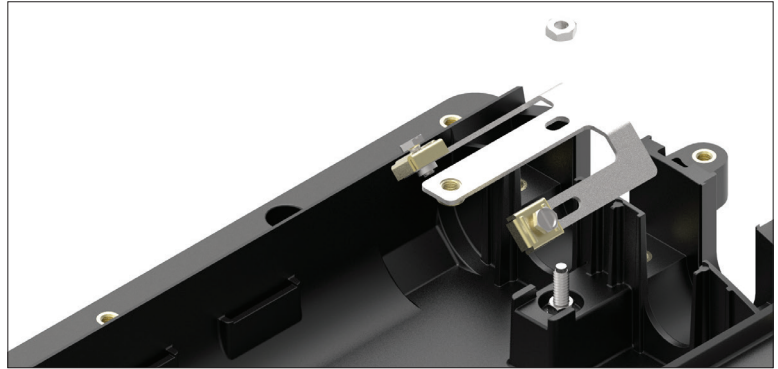
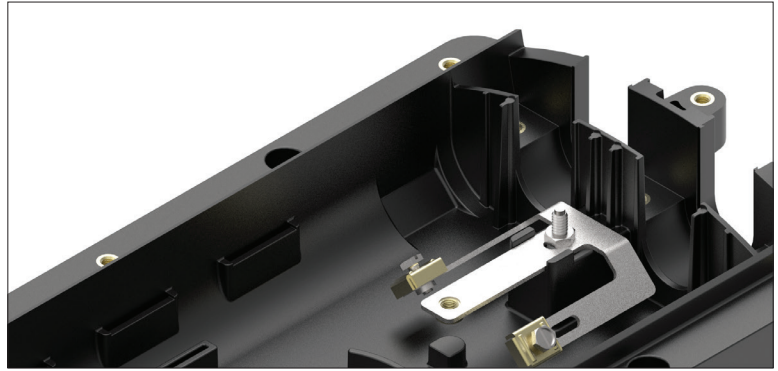
There should be a .55" gap between the grommet and the bobbin.

Ensure that the grommet is about 3.25" from the sheath opening.

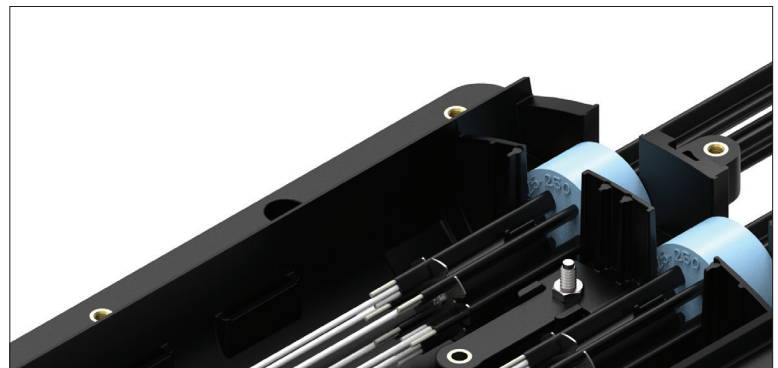
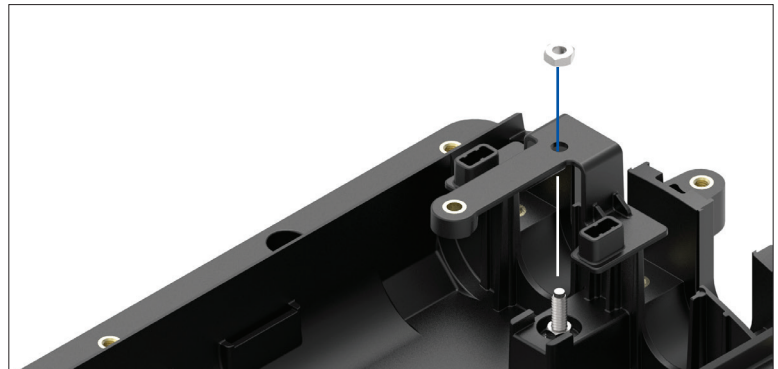
NOTE: Keep the tab on the bobbin facing downwards for easier placement in the closure.



- 3 Remove the standard cable retention bracket from the COYOTE In-Line RUNT. Be sure to keep the retaining nut on hand.

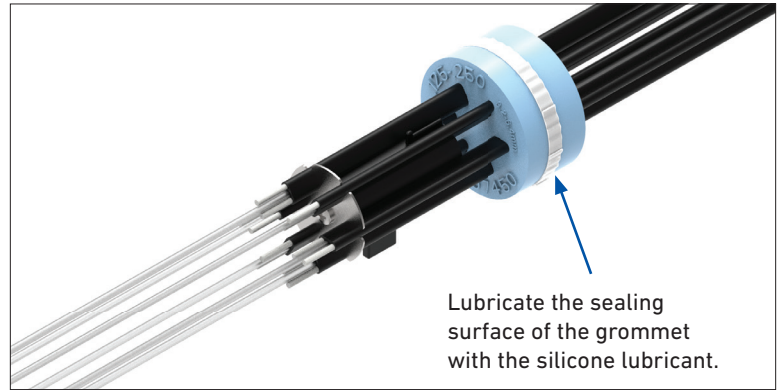


- 4 Screw the flat drop retention bracket into the In-Line RUNT with the same nut.



5

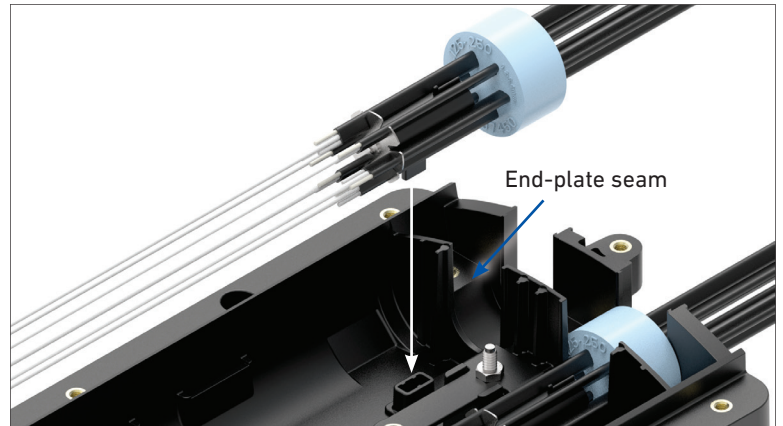
Lubricate the outer surface of each grommet. Spread the lubricant evenly around the outer surface.



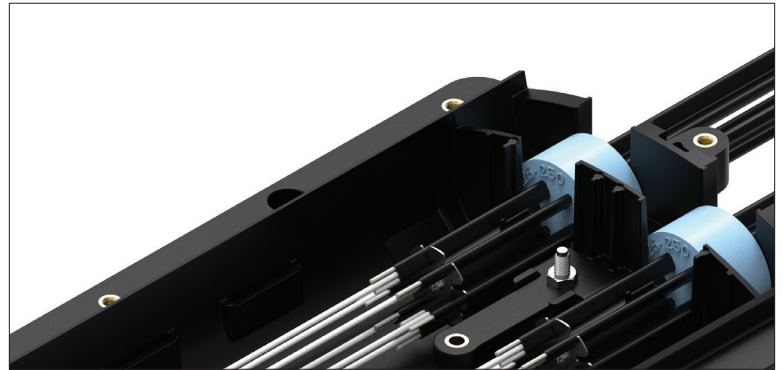
6

Position the grommets into the slots of the base while also inserting the bobbin tabs into the corresponding slots on the bracket.

NOTE: DO NOT align the grommet slits with the end-plate seam.



NOTE: Refer back to the application procedure for the COYOTE In-Line RUNT Closure Kit as needed (SP2962).









GLOBAL HEADQUARTERS
660 BETA DRIVE
CLEVELAND, OH 44143

+1 440 461 5200
INFO@PLP.COM
PLP.COM