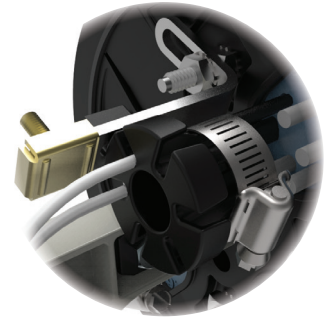




COYOTE® CABLE RETENTION BOBBINS

INSTALLATION INSTRUCTIONS



IMPORTANT SAFETY INFORMATION

READ AND COMPLETELY UNDERSTAND ALL INSTRUCTIONS BEFORE INSTALLING PRODUCT. FAILURE TO FOLLOW THESE INSTRUCTIONS MAY RESULT IN PERSONAL INJURY OR DEATH.

This product is intended for use by trained technicians only. This product should not be used by anyone who is not familiar with and not trained to use it. When working in the area of energized lines, extra care should be taken to prevent accidental electrical contact. Be sure to wear proper safety equipment per your company protocol. These instructions are not intended to supersede any company construction or safety standards. These instructions are offered only to illustrate safe installation for the individual. PLP products are intended for the specified application only. Do not modify this product under any circumstances. Do not reuse or reinstall any PLP product unless that capability is expressly indicated in the product's Installation Instructions. For proper performance and personal safety, be sure to select the proper PLP product before installation. PLP products are precision devices. To ensure proper performance, they should be stored in cartons under cover and handled carefully.

PACKAGE COMPONENTS FOR COYOTE 4-PORT CABLE RETENTION BOBBIN



1



2

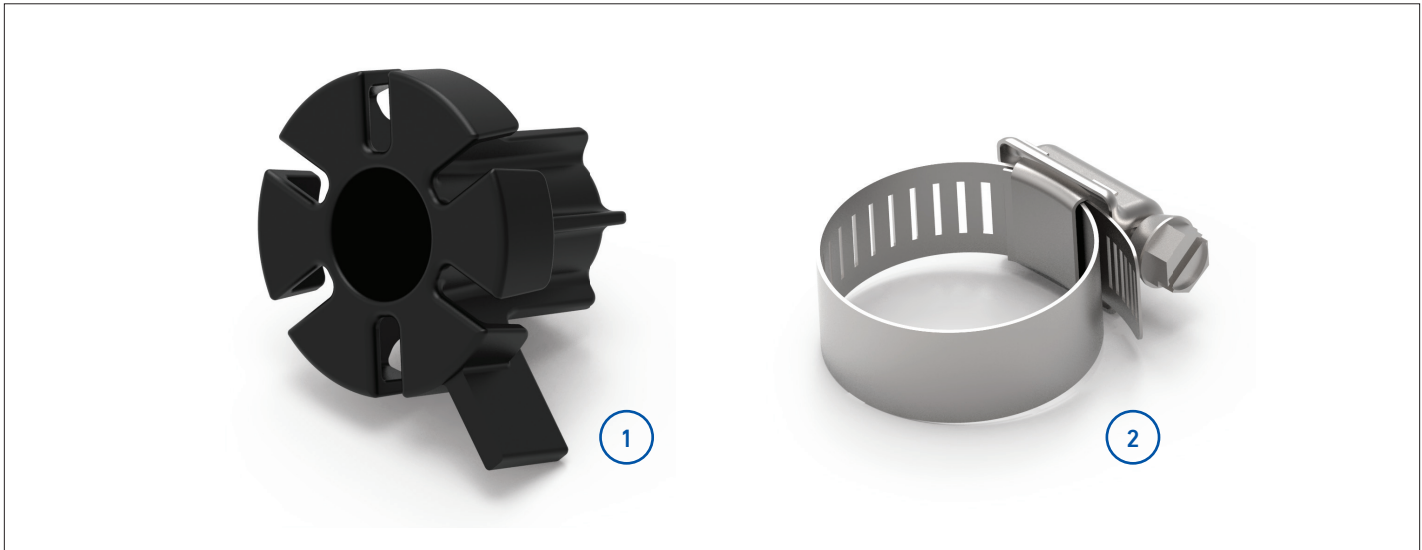
Catalog Number: 80811037

1. COYOTE 4-Port Cable Retention Bobbin (1)
2. Hose Clamp (1)

Tools Required:

- 3/8" Can Wrench or Socket Wrench
- Flat Head Screwdriver
- Side Cutters
- Snips
- Fiber Optic Cable Opening Tools

PACKAGE COMPONENTS FOR COYOTE 6-PORT CABLE RETENTION BOBBIN



Catalog Number: 80811036

1. COYOTE 6-Port Cable Retention Bobbin (1)
2. Hose Clamp (1)

Tools Required:

- 3/8" Can Wrench or Socket Wrench
- Flat Head Screwdriver
- Side Cutters
- Snips
- Fiber Optic Cable Opening Tools

PACKAGE COMPONENTS FOR COYOTE 6/8-PORT CABLE RETENTION BOBBIN



Catalog Number: 80812928

1. COYOTE 6/8-Port Cable Retention Bobbin (1)
2. Hose Clamp (1)
3. COYOTE 6/8-Port Cable Retention Bobbin Cap (1)
4. #6 x 1/2" Self-Tapping Screw (1)

Tools Required:

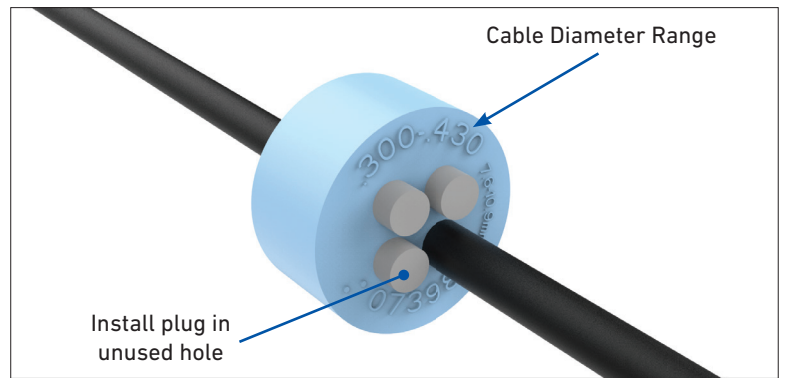
- 3/8" Can Wrench or Socket Wrench
- Flat Head Screwdriver
- Philips Head Screwdriver
- Side Cutters
- Snips
- Fiber Optic Cable Opening Tools

CABLE PREPARATION AND INSTALLATION FOR 4-PORT CABLE RETENTION BOBBIN

- 1 Measure the diameter of each cable to verify it is within the range of the grommet.



- 2 Insert the cable(s) into the grommet. Install grommet plugs in any unused hole.
NOTE: To install express/balloon/ring cut cable into the grommet, the grommet must be slit. Refer to the installation instructions provided in the grommet kit for the grommet slitting procedure.

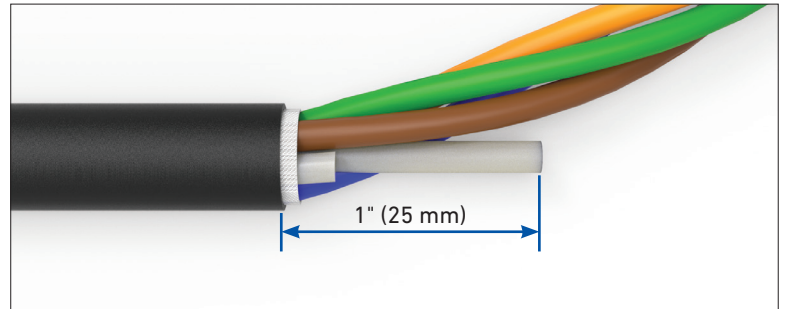


4-Hole Grommet (Catalog Number 8003664)

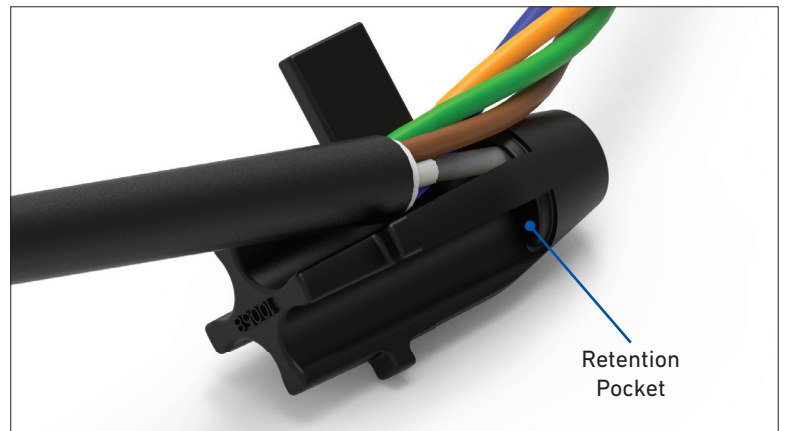
- 3 Remove the cable sheath and trim the cable strength member 1" (25 mm) from the cable sheath opening for each cable.
NOTE: Refer to the installation instructions provided in the closure kit to determine the cable sheath opening for each cable.

CAUTION

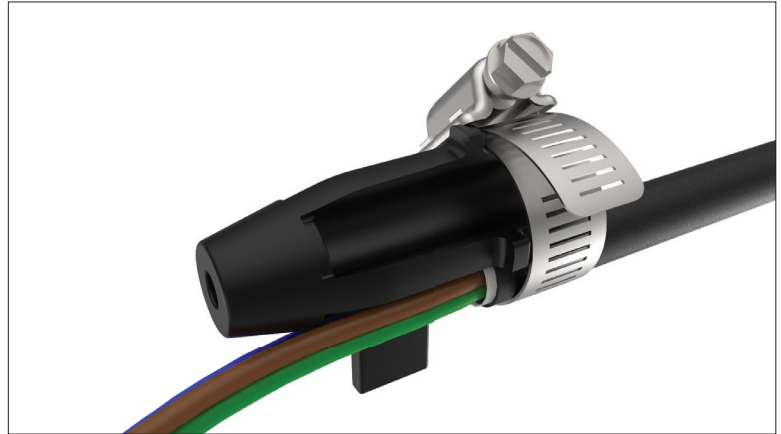
Follow the cable manufacturer's cable opening procedure to ensure the optical fibers of the cable are not cut or damaged.



- 4 Place the end(s) of the strength member(s) in the retention pocket(s) of the bobbin. Route the buffer tube(s) over the end of the bobbin.

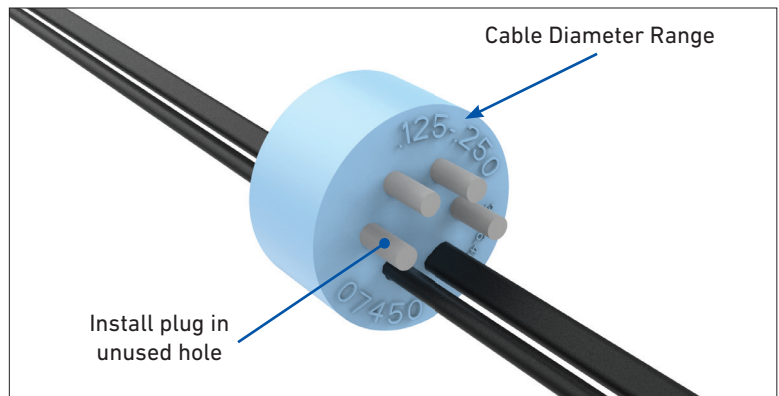


- 5 Secure the cable(s) to the bobbin with the hose clamp.



CABLE PREPARATION AND INSTALLATION FOR 6-PORT CABLE RETENTION BOBBIN

- 6 Insert the flat drop cable(s) into the 6-hole grommet (**Catalog Number 8003665**). Install grommet plugs in any unused hole.

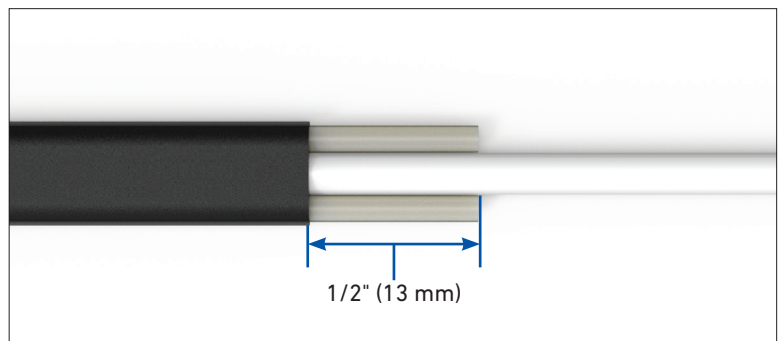


- 7 Remove the cable sheath and trim the cable strength members 1/2" (13 mm) from the cable sheath opening for each cable.

NOTE: Refer to the installation instructions provided in the closure kit to determine the cable sheath opening for each cable.

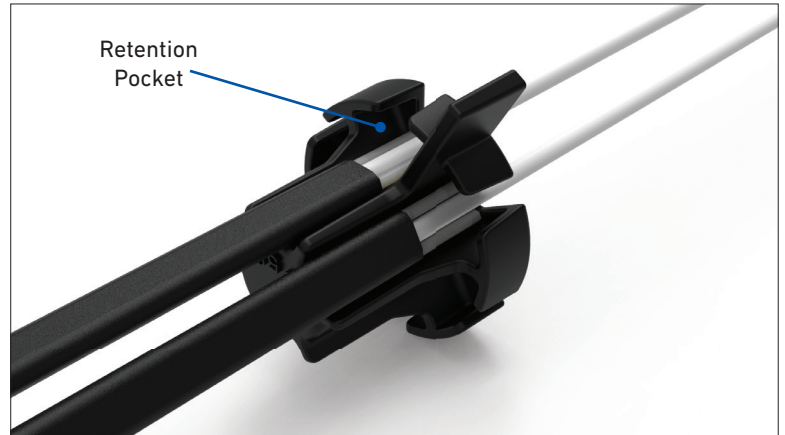
CAUTION

Follow the cable manufacturer's cable opening procedure to ensure the optical fibers of the cable are not cut or damaged.



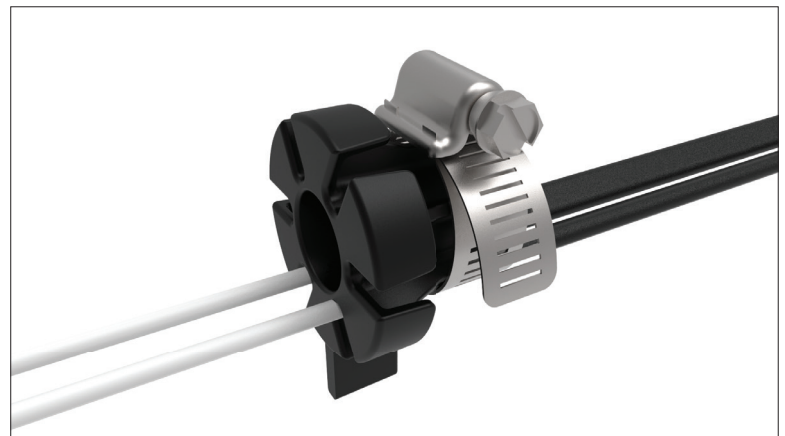
8

Place the end(s) of the strength member(s) in the retention pocket(s) of the bobbin. Route the buffer tube(s) through the slot(s) of the bobbin.



9

Secure the cable(s) to the bobbin with the hose clamp.

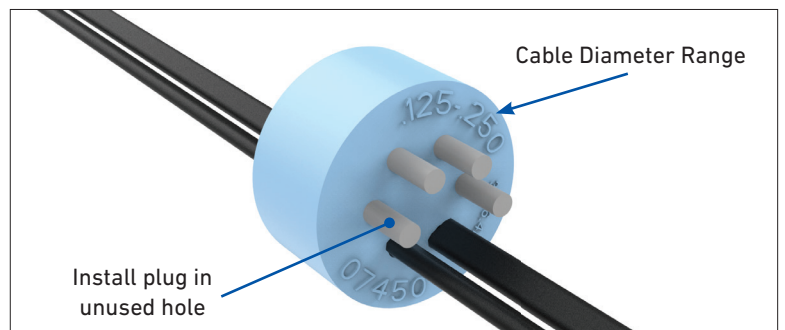


CABLE PREPARATION AND INSTALLATION FOR 6/8-PORT CABLE RETENTION BOBBIN

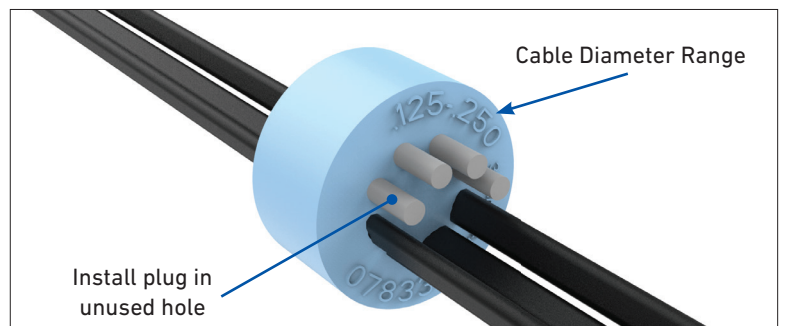
10

Insert the flat drop cable(s) into the 6-hole or 8-hole grommet. Install grommet plugs in any unused hole.

NOTE: Steps 10-14 are shown using flat drop cables, but the process is the same for round cables.



6-Hole Grommet (Catalog Number 8003665)



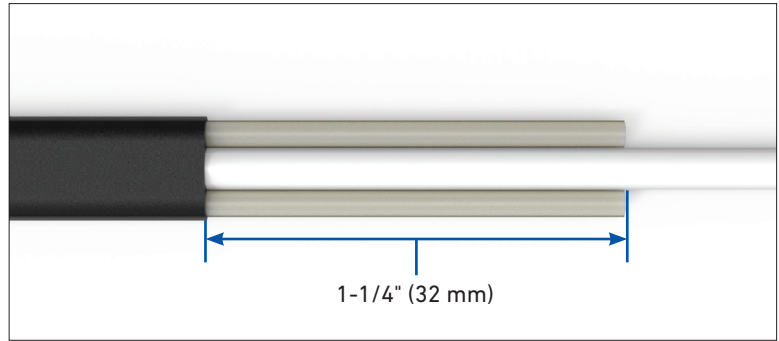
8-Hole Grommet (Catalog Number 8003677)

- 11 Remove the cable sheath and trim the cable strength members 1-1/4" (32 mm) from the cable sheath opening for each cable.

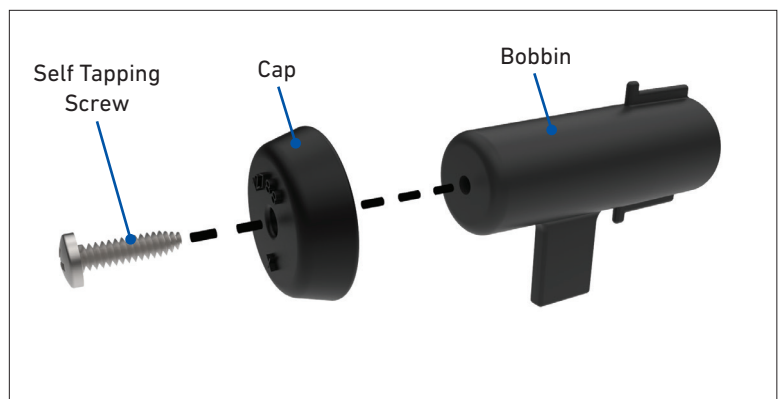
NOTE: Refer to the installation instructions provided in the closure kit to determine the cable sheath opening for each cable.

CAUTION

Follow the cable manufacturer's cable opening procedure to ensure the optical fibers of the cable are not cut or damaged.



- 12 Install the cap onto the end of the bobbin with the self-tapping screw.



- 13 Place the end(s) of the strength member(s) under the cap of the bobbin. Route the buffer tube(s) over the cap.

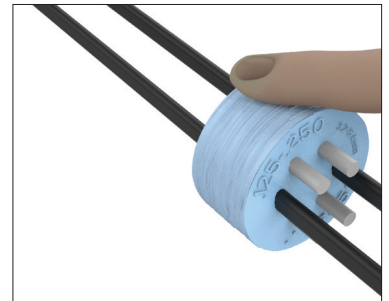
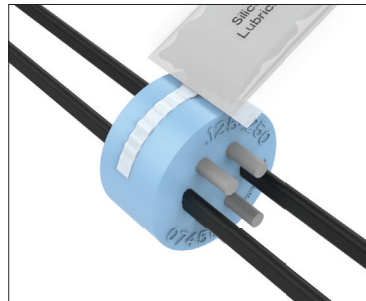


- 14 Secure the cable(s) to the bobbin with the hose clamp.

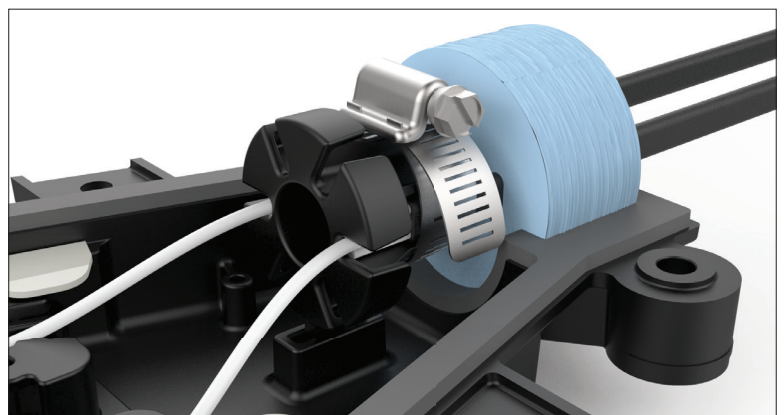
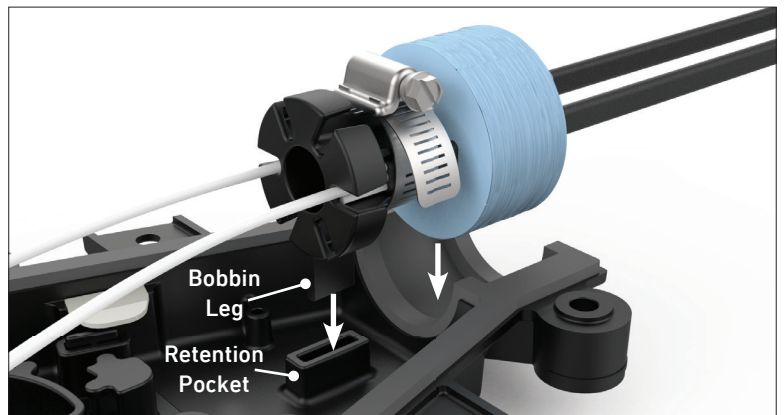


BOBBIN INSTALLATION IN COYOTE® LCC

- 15 Lubricate the outer surface of the grommet with the silicone lubricant provided with the grommets. Spread the lubricant evenly around the outer surface of the grommet.

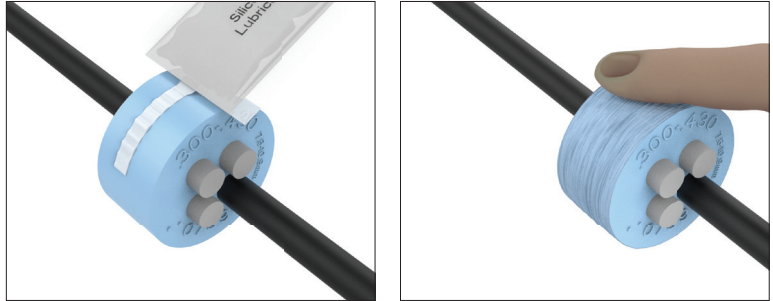


- 16 Pull the cable(s) through the grommet to align the grommet with the grommet pocket of the closure base and the leg of the bobbin with the retention pocket of the closure base. Insert the grommet and bobbin into the base of the closure and push down ensure they are fully seated.

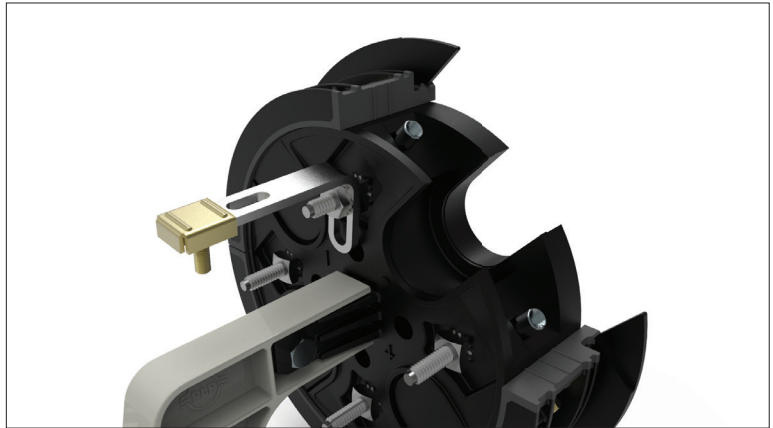


BOBBIN INSTALLATION IN COYOTE® DOME CLOSURES

- 17** Lubricate the outer surface of the grommet with the silicone lubricant provided with the grommets. Spread the lubricant evenly around the outer surface of the grommet.

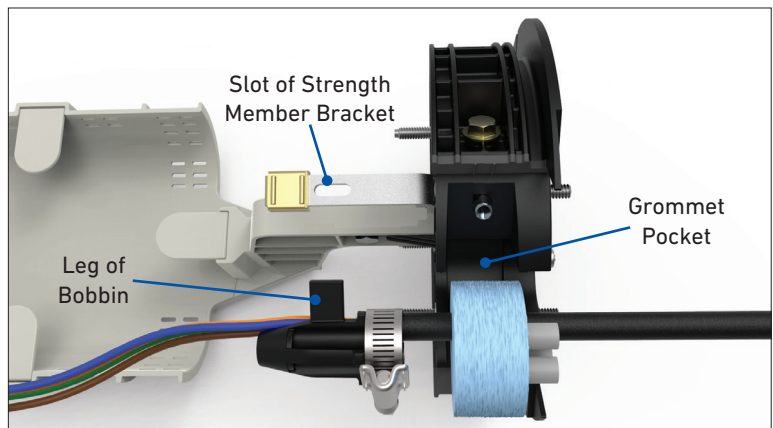


- 18** Loosely install the strength member bracket to the ground stud on the inside of the end plate with the lock washer and nut provided with the closure kit.



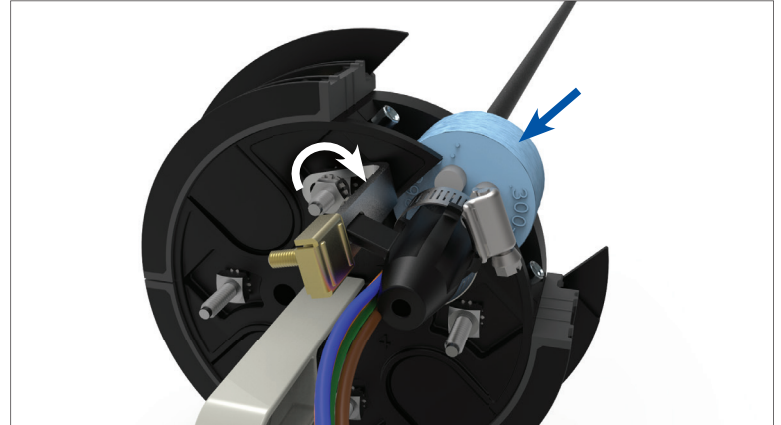
COYOTE 6.5" Dome Closure End Plate

- 19** Pull the cable(s) through the grommet to align the grommet with the grommet pocket of the end plate and the leg of the bobbin with the slot of the strength member bracket.



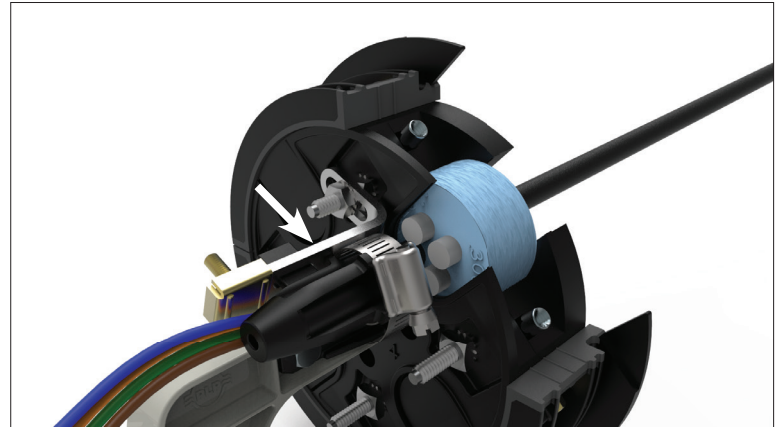
COYOTE 6.5" Dome Closure End Plate

- 20 Insert the grommet into the end plate and rotate the strength member bracket so that the leg of the bobbin gets captured in the slot of the strength member bracket as the grommet is inserted.



COYOTE® 6.5" Dome Closure End Plate

- 21 Adjust the strength member bracket so that the leg of the bobbin is fully inserted into the slot of the bracket and tighten down the nut to secure the strength member bracket in place.



COYOTE 6.5" Dome Closure End Plate

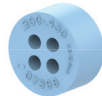

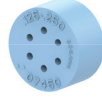


APPENDIX A

COYOTE® Cable Retention Bobbin Kits & Accessories

PLP Catalog Number	Description
80811037	4-Port Cable Retention Bobbin Kit
80811036	6-Port Drop Cable Retention Bobbin Kit
80812928	6/8-Port Drop Cable Retention Bobbin Kit
80809205	Strength Member Bracket Kit – Includes (2) Short L-Brackets
80808651	Strength Member Bracket Kit – Includes (4) Long L-Brackets

APPENDIX B

COYOTE® Grommet Chart for COYOTE Cable Retention Bobbins

PLP Catalog Number	Cable		Description	Image	Pre-Slit Location
	in	mm			
8003664	0.30" - 0.43"	7.6 - 10.9	4-entry grommet		
8003665	0.125" - 0.25" or Flat Drop	3.2 - 6.4 or Flat Drop	6-entry grommet		
8003677	0.125" - 0.25" or Flat Drop	3.2 - 6.4 or Flat Drop	8-entry grommet		Not Available





GLOBAL HEADQUARTERS
660 BETA DRIVE
CLEVELAND, OH 44143

+1 440 461 5200
INFO@PLP.COM
PLP.COM