



## FIBERLIGN® ALUMINUM SUPPORT

The **FIBERLIGN Aluminum Support (FAS)** system is designed to gently but firmly support ADSS cable. It is intended for tangent support installations on lines that feature relatively low voltages, short spans, and modest mechanical loads.

### FEATURES AND BENEFITS

- Mounts to a pole with a 5/8" through bolt or with a 1-1/4" wide x 0.040" thick (32 mm x 1 mm) steel band
- Supports span lengths up to 600 ft (183 m) NESC Heavy for cables with diameters less than 1.0" and 300 ft (91 m) NESC Heavy for cables with diameters greater than 1.0"
- Supports line angles up to 20 degrees
- Base and keeper of the FAS are made from aluminum alloy
- Inserts are made from a soft, pliable dielectric material that gently grips and cushions the cable within the housing
- Hinged keeper is secured to the base with a captured galvanized steel bolt, lock washer, and washer
- Multiple assemblies can be stacked together for multi-cable installations
- Cable cavity is contoured and smooth to allow it to be used as a stringing traveler at the structure

## SPECIFICATIONS

The support performance depends upon the specific cable outer diameter, initial cable tension, NESC loading condition, and other factors. The **FIBERLIGN® Aluminum Support** is designed for a cable system with light tensions and short spans. The following cable system specifications are required to use FIBERLIGN Aluminum Support:

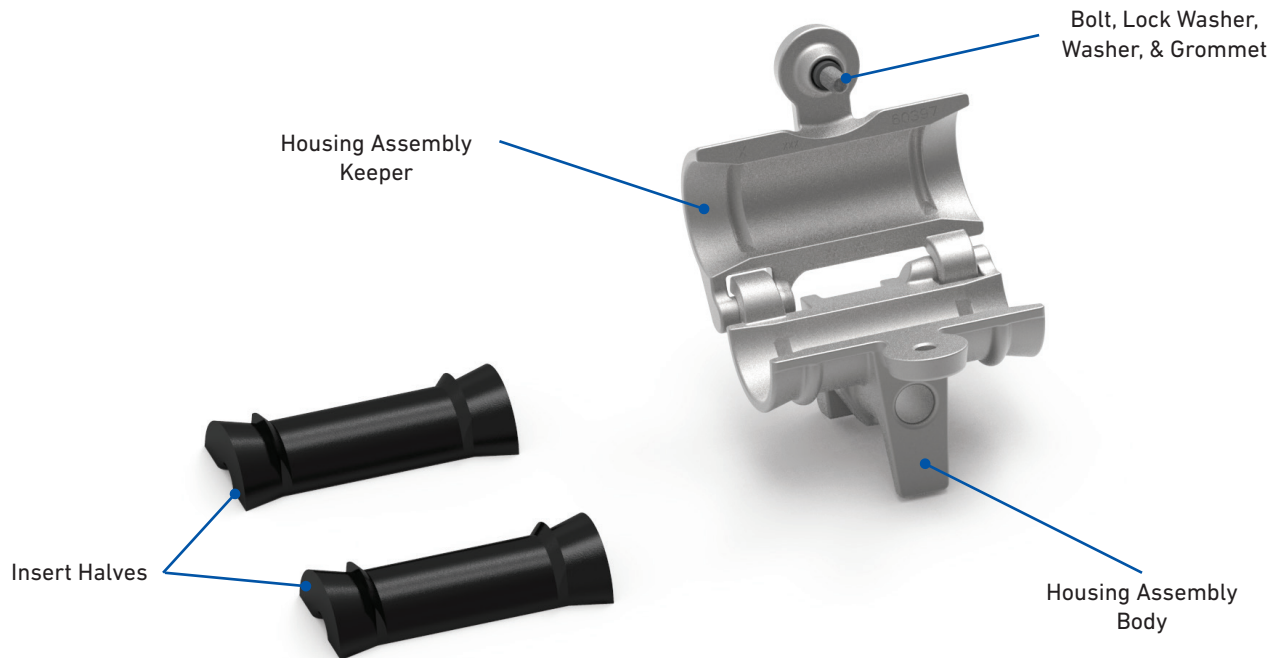
### FIBERLIGN Aluminum Support

Cable System Requirements	
Maximum Span Length <sup>1</sup>	Maximum Line Angle <sup>2</sup>
<1.00" OD = 600 ft (183 m)	degrees
≥1.00" OD = 300 ft (91 m)	20

<sup>1</sup>NESC Heavy

<sup>2</sup>Consult PLP for exceptions

## COMPONENTS



Component	Description
Housing Assembly	Features an interlocking hinge between the base and the keeper that allows for easy access. Both the base and keeper have a cavity designed to accept the insert halves. Keeper secures to the base with a captured bolt and holds the cable in place. Housing body has a molded-in through hole that will accept a 5/8"-11 UNC hot-dipped galvanized bolt. It also has a banding slot to accept a 1-1/4" wide x 0.040" thick (32 mm x 1 mm) steel band.
Insert Halves	Slotted to accept cables with diameters up to 1.425" (36.2 mm). Designed to cushion the cable under loads. Molded flanges retain inserts to help avoid dropping them during installation.

## MOUNTING OPTIONS

### Bolt Mount

- Attached with a 5/8"-11 through bolt or double-arming bolt
- Housing assembly accounts for approximately 3.2" (81 mm) of the bolt length



FAS Bolted to Pole

### Band Mount

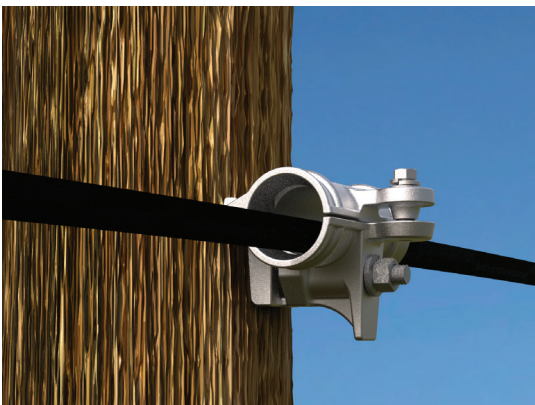
- 1/4" wide (up to 0.040" thick) steel banding can be inserted through the back slot to directly attach the support to a structure
- Banding not included



FAS Banded to Pole

## STRINGING OPERATIONS

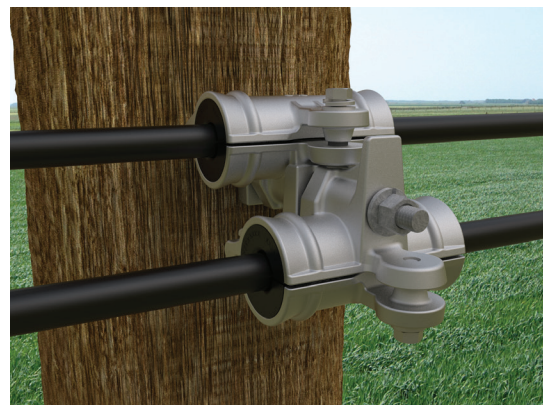
- Housing assembly allows up to 20 degree line angles
- With inserts removed, the open cavity will accept up to 1-1/4" diameter mechanical swivel with pulling-in grip
- Eliminates the need for conventional stringing travelers



Stringing in Cable with FAS

## STACKING CAPABILITIES

- Allows for greater density at a single attachment location
- Adjust length of bolt by 3.2" (81 mm) for each stacked support
- Use a brace to support the bolt or banding when stacking more than two supports
- Staggered formation reduces the possibility of cables colliding during windy conditions



Stacked FAS Assemblies

## ORDERING INFORMATION

Select the appropriate **FIBERLIGN® Aluminum Support** based on the cable diameter. If the cable you are using does not fall within any of the published ranges, please contact PLP for further assistance.

### FIBERLIGN Aluminum Support

- Each Aluminum Support includes one complete insert (two halves) for the stated cable range
- Additional inserts are sold as Insert Halves – see adjacent table

Catalog Number	Cable Diameter Range	
	in	mm
4450095	0.226 – 0.275	5.7 – 6.9
4450096	0.276 – 0.325	7.0 – 8.2
4450097	0.326 – 0.375	8.3 – 9.4
4450098	0.376 – 0.425	9.5 – 10.7
4450099	0.426 – 0.475	10.8 – 12.0
4450100	0.476 – 0.525	12.1 – 13.3
4450101	0.526 – 0.575	13.4 – 14.6
4450102	0.576 – 0.625	14.7 – 15.9
4450103	0.626 – 0.675	16.0 – 17.1
4450104	0.676 – 0.750	17.2 – 19.1
4450105	0.751 – 0.825	19.2 – 21.0
4450106	0.826 – 0.900	21.1 – 22.9
4450107	0.901 – 0.975	23.0 – 24.8
4450108	0.976 – 1.050	24.9 – 26.7
4450109	1.051 – 1.125	26.8 – 28.6
4450110	1.126 – 1.200	28.7 – 30.5
4450111	1.201 – 1.275	30.6 – 32.4
4450112	1.276 – 1.350	32.5 – 34.3
4450113	1.351 – 1.425	34.4 – 36.2
4450000	Housing Assembly Only	



FIBERLIGN Aluminum Support\*  
\* Includes one complete insert  
(comprised of two Insert Halves)

### FIBERLIGN Aluminum Support Insert Halves

- Two Insert Halves are required for each support

Catalog Number	Cable Diameter Range	
	in	mm
00070241	0.226 – 0.275	5.7 – 6.9
00070236	0.276 – 0.325	7.0 – 8.2
00070237	0.326 – 0.375	8.3 – 9.4
00070238	0.376 – 0.425	9.5 – 10.7
00070239	0.426 – 0.475	10.8 – 12.0
00070125	0.476 – 0.525	12.1 – 13.3
00070126	0.526 – 0.575	13.4 – 14.6
00070127	0.576 – 0.625	14.7 – 15.9
00070128	0.626 – 0.675	16.0 – 17.1
00070129	0.676 – 0.750	17.2 – 19.1
00070130	0.751 – 0.825	19.2 – 21.0
00070131	0.826 – 0.900	21.1 – 22.9
00070132	0.901 – 0.975	23.0 – 24.8
00070133	0.976 – 1.050	24.9 – 26.7
00070134	1.051 – 1.125	26.8 – 28.6
00070135	1.126 – 1.200	28.7 – 30.5
00070136	1.201 – 1.275	30.6 – 32.4
00070137	1.276 – 1.350	32.5 – 34.3
00070138	1.351" – 1.425	34.4 – 36.2



FIBERLIGN Aluminum Support Insert Half