



DOGBONE® VIBRATION DAMPER

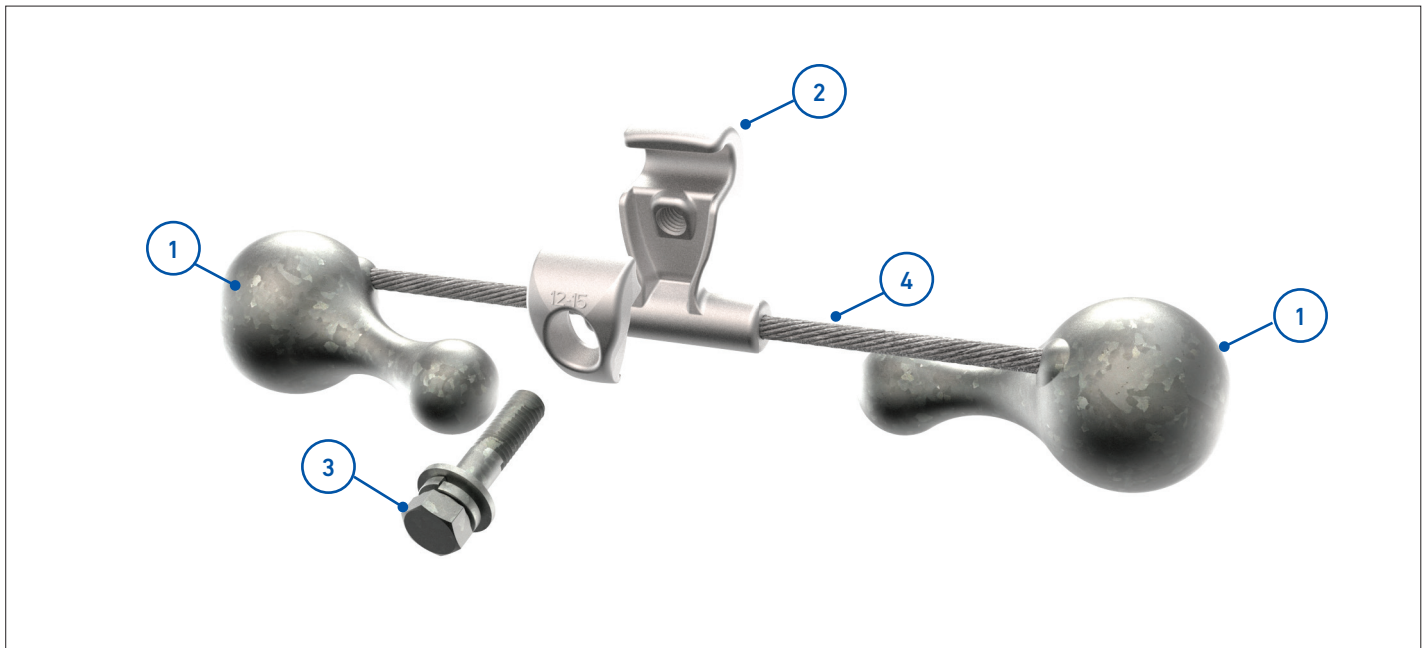
INSTALLATION INSTRUCTIONS

IMPORTANT SAFETY INFORMATION

READ AND COMPLETELY UNDERSTAND ALL INSTRUCTIONS BEFORE INSTALLING PRODUCT. FAILURE TO FOLLOW THESE INSTRUCTIONS MAY RESULT IN PERSONAL INJURY OR DEATH.

This product is intended for use by trained technicians only. This product should not be used by anyone who is not familiar with and not trained to use it. When working in the area of energized lines, extra care should be taken to prevent accidental electrical contact. Be sure to wear proper safety equipment per your company protocol. These instructions are not intended to supersede any company construction or safety standards. These instructions are offered only to illustrate safe installation for the individual. PLP products are intended for the specified application only. Do not modify this product under any circumstances. Do not reuse or reinstall any PLP product unless that capability is expressly indicated in the product's Installation Instructions. For proper performance and personal safety, be sure to select the proper PLP product before installation. PLP products are precision devices. To ensure proper performance, they should be stored in cartons under cover and handled carefully.

PACKAGE COMPONENTS



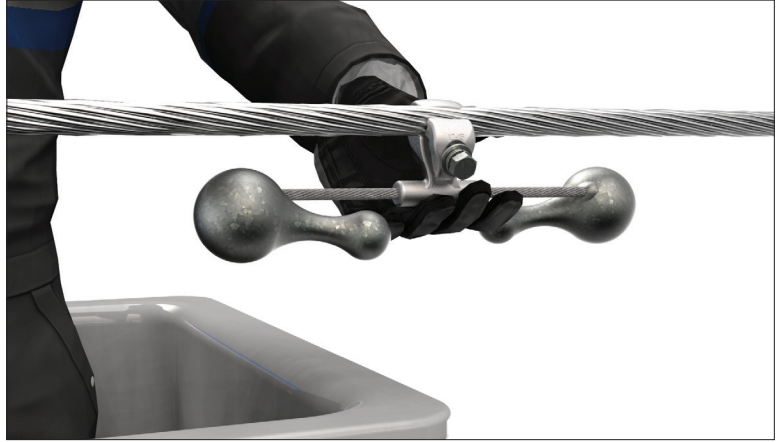
1. Zinc Masses
2. High-Strength Aluminum Clamp
3. Hot-Dip Galvanized or Anodized Aluminum Bolt
4. Galvanized 19-Strand Messenger

Tools Required:

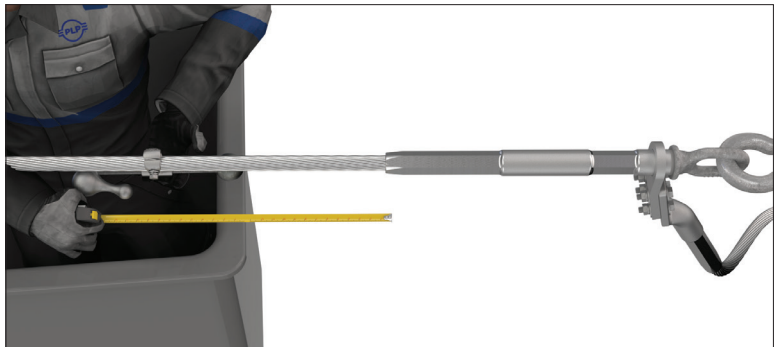
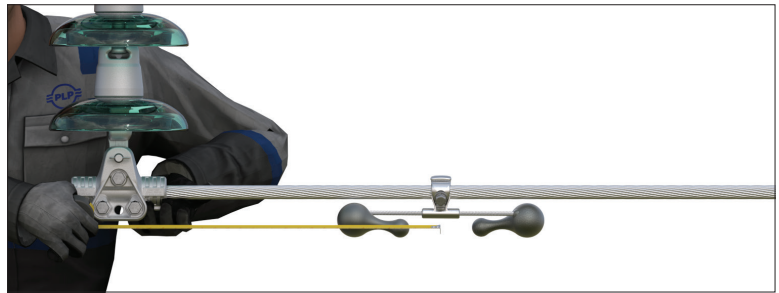
- Torque Wrench

- 1 Loosen the bolt and open the clamp enough to accommodate the diameter of the conductor. Position the damper on the conductor to verify a proper fit.

NOTE: Depending on the placement recommendation, the damper may be placed over the Armor Rods, ARMOR-GRIP® Suspension (AGS) rods, or directly on the bare conductor.



- 2 Using the placement recommendations provided by PLP or the Damper Placement Software, measure the proper distance from either the centerline of the suspension or the end of the dead-end, as specified.

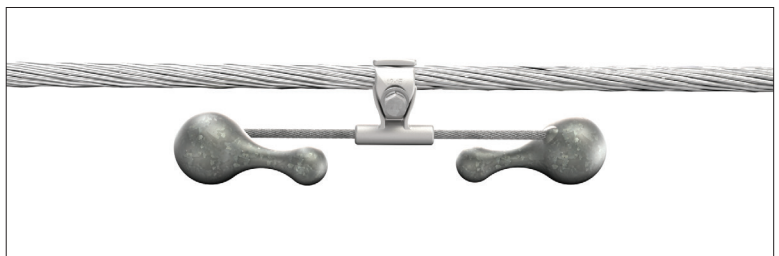


- 3 Center the damper at the specified placement distance (a tolerance of ± 2 inches is acceptable) and tighten the bolt to the torque recommendations provided in the back of these instructions.

NOTE: If shear-head bolts have been provided, tighten until the bolt head shears off.



- 4 Completed installation.



TORQUE RECOMMENDATIONS

Damper Catalog Number	Install Torque	
	ft-lb	Nm
DB05-06	20	27
DB05-08	20	27
DB05-12	25	34
DB05-15	25	34
DB1-18	25	27
DB1-21	25	34
DB1-24	25	34

Damper Catalog Number	Install Torque	
	ft-lb	Nm
DB1-27	30	40
DB1-30	30	40
DB1-34	40	54
DB1-38	40	54
DB1-42	40	54

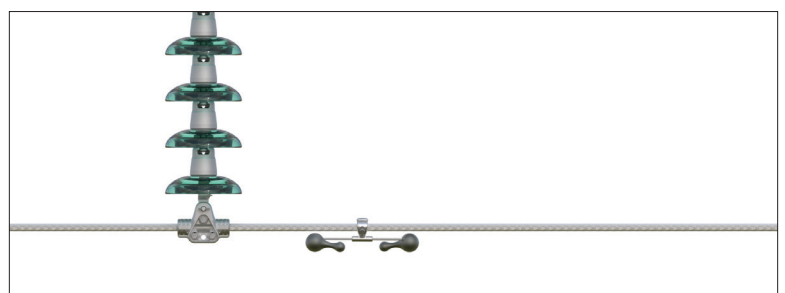
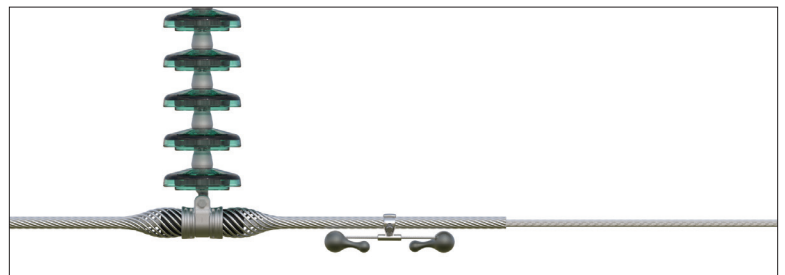
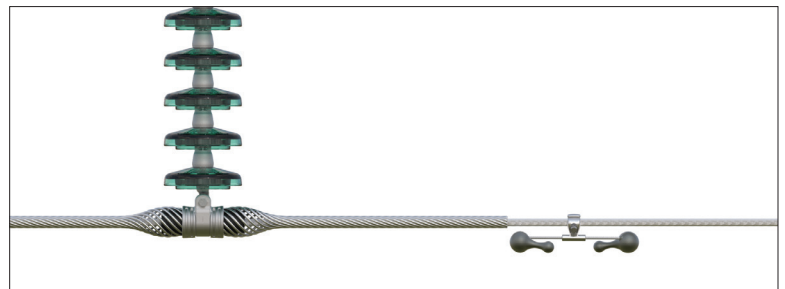
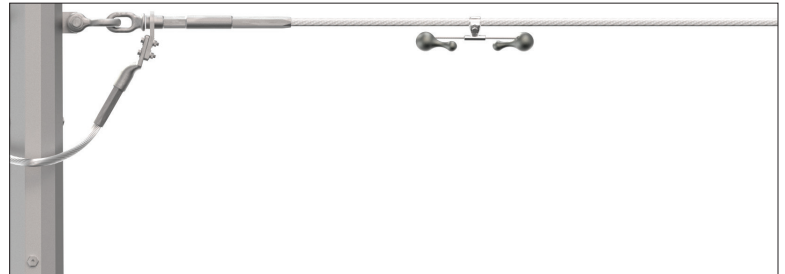
Catalog Number Example: **DB05-06**

Weight Size Clamp Number

DAMPER PLACEMENT EXAMPLE

Typical Configurations

Contact PLP for specific placement recommendations.





GLOBAL HEADQUARTERS
660 BETA DRIVE
CLEVELAND, OH 44143

+1 440 461 5200
INFO@PLP.COM
PLP.COM