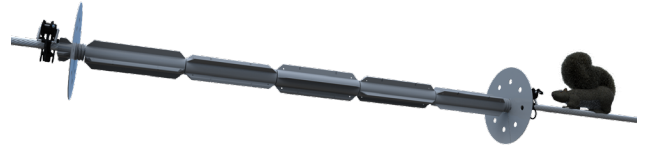




SQUIRREL DETERRENT SYSTEM

INSTALLATION INSTRUCTIONS

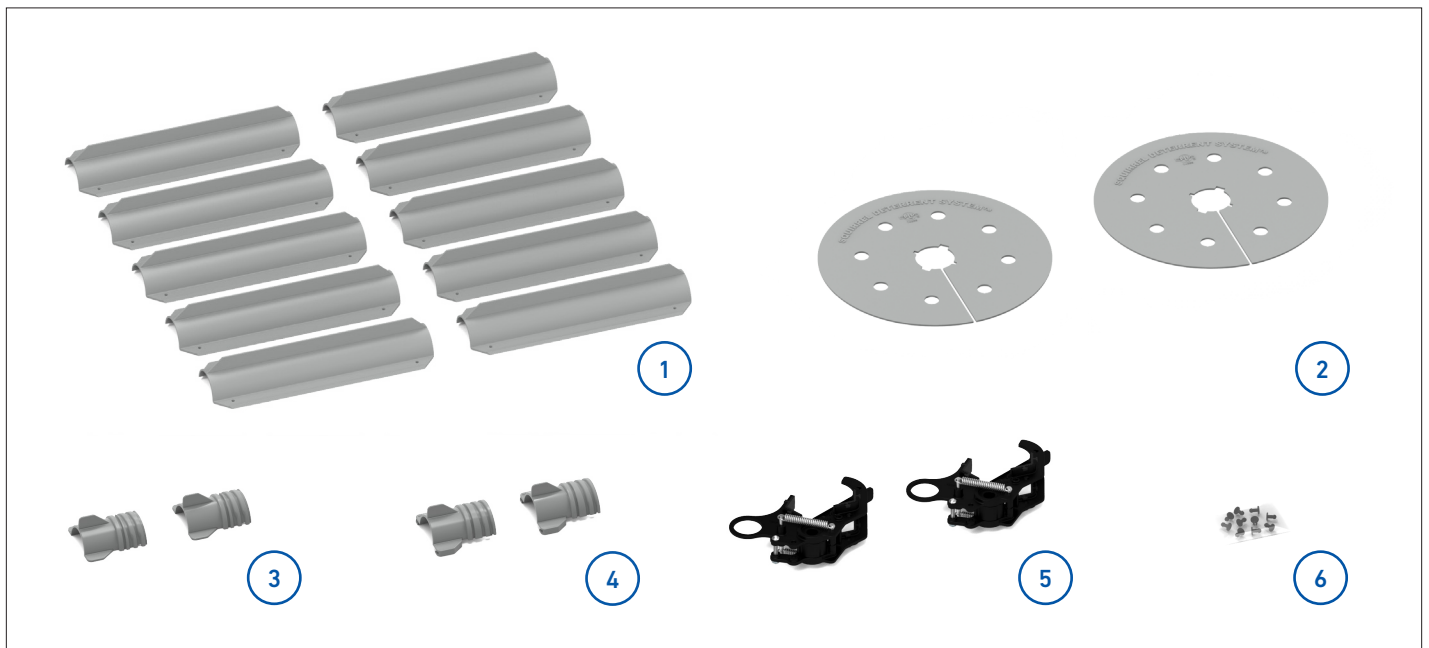


IMPORTANT SAFETY INFORMATION

READ AND COMPLETELY UNDERSTAND ALL INSTRUCTIONS BEFORE INSTALLING PRODUCT. FAILURE TO FOLLOW THESE INSTRUCTIONS MAY RESULT IN PERSONAL INJURY OR DEATH.

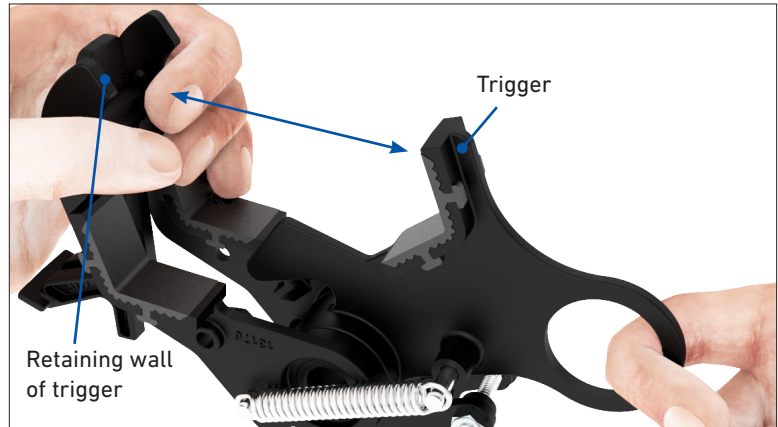
This product is intended for use by trained technicians only. This product should not be used by anyone who is not familiar with and not trained to use it. When working in the area of energized lines, extra care should be taken to prevent accidental electrical contact. Be sure to wear proper safety equipment per your company protocol. These instructions are not intended to supersede any company construction or safety standards. These instructions are offered only to illustrate safe installation for the individual. PLP products are intended for the specified application only. Do not modify this product under any circumstances. Do not reuse or reinstall any PLP product unless that capability is expressly indicated in the product's Installation Instructions. For proper performance and personal safety, be sure to select the proper PLP product before installation. PLP products are precision devices. To ensure proper performance, they should be stored in cartons under cover and handled carefully.

PACKAGE COMPONENTS



1. Spinner Halves (10)
2. End Plates (2)
3. "A" Collet Halves (2)
4. "B" Collet Halves (2)
5. Clamps (2)
6. 10 Count Bag of Push Pins

- 1 Open up one of the clamps by pulling apart the jaws until it is locked in the open position.

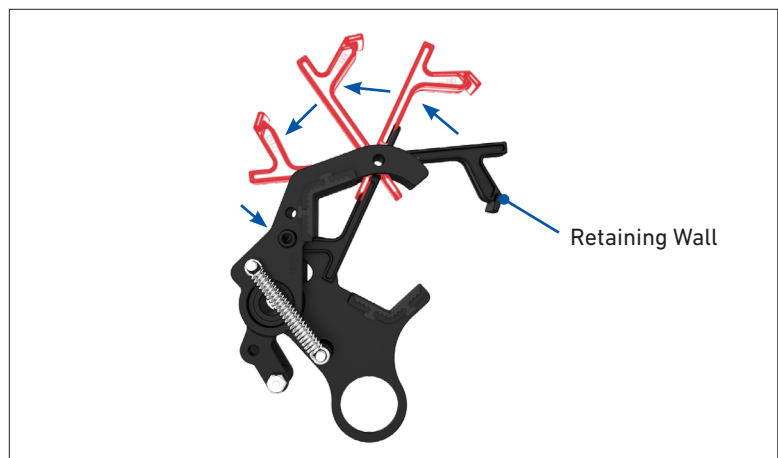


- 2 Rotate the trigger until its retaining wall rests in the clamp.

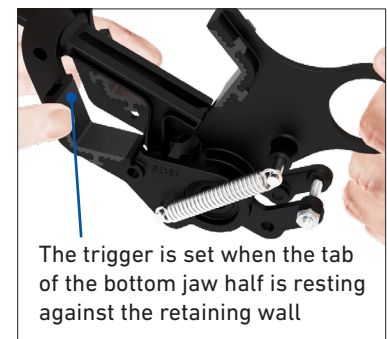
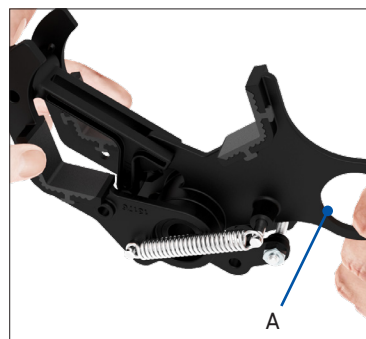
Place your index finger on the top of the trigger to hold the retaining wall against the clamp body. The thumb and middle finger will be on opposite sides of the clamp.

WARNING

Keep fingers clear of the clamp mechanism when setting the trigger.



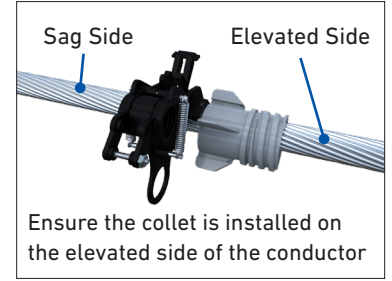
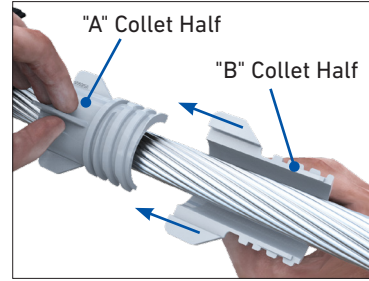
- 3 To set the trigger, continue holding the clamp as described in Step 2 and use the opposite hand to push (A) the Loop forward. This trigger will hold the jaw open.



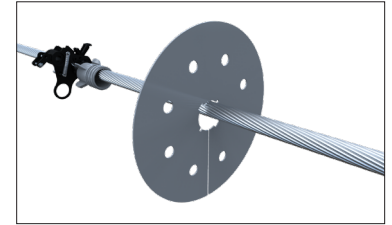
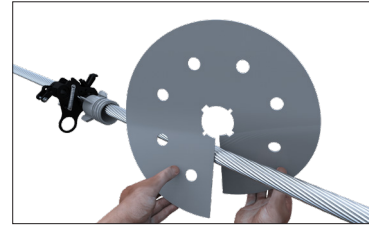
- 4 Place the clamp over the conductor/strand at the desired location. Lower the clamp onto the cable until the trigger is activated and the clamp is latched onto the cable.



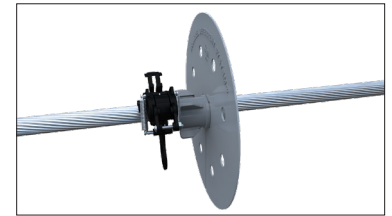
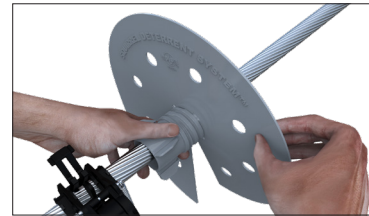
- 5 Assemble a collet onto the conductor/strand next to the clamp as shown. Ensure that the narrow end of the collet is facing away from the clamp.



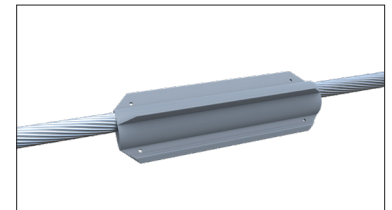
- 6 Install an end plate onto the conductor/strand next to the collet as shown.



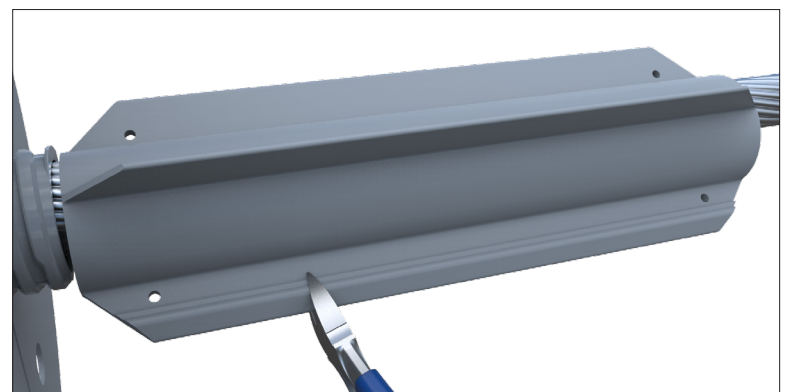
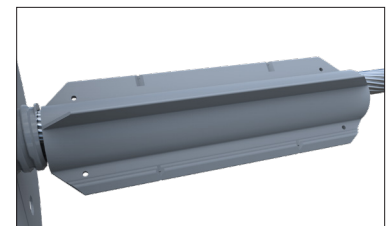
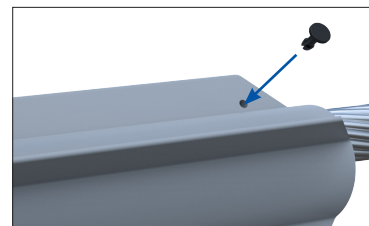
- 7 Align the end plate over the collet threads as shown. Twist the end plate counter-clockwise onto the collet threads until the end plate is able to spin freely on the collet.



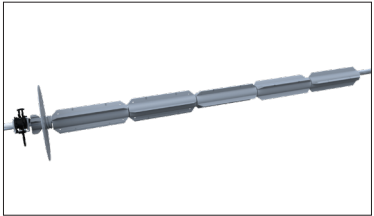
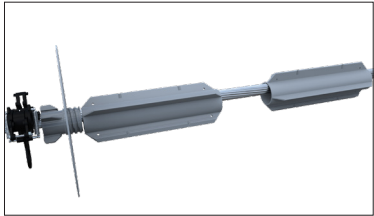
- 8 Place two spinner halves around the conductor/strand near the collet and slide them together.



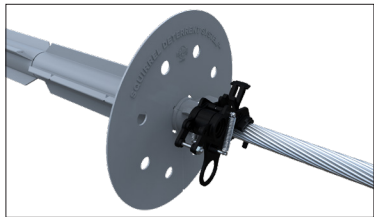
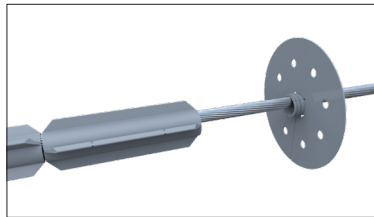
- 9 Secure the spinner halves together by inserting the supplied pins. Use at least one per spinner. Alternatively, or in addition, the spinner halves can be permanently crimped together using bolt cutters or a similar tool. Make a minimum of one crimp per spinner.



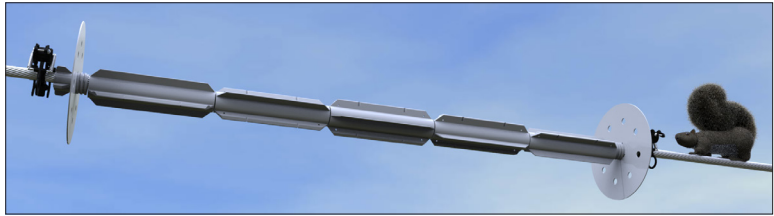
- 10** Repeat spinner installation steps 8 and 9 for each additional spinner until the desired protection level is achieved.



- 11** Assemble the second collet and end plate onto the conductor/strand, as shown in Steps 5 - 7. Slide the collet and end plate next to the spinner and install the second clamp, leaving a gap of 1 - 2 inches between the clamp and the end of the collet (See Steps 1 - 4 for clamp installation).



- 12** Completed application of the Squirrel Deterrent System.



APPENDIX A

Squirrel Deterrent System

PLP Catalog Number	Description	Carton Quantity	Carton Weight (lb)
SDS-005	Squirrel Deterrent System (SDS) - 5 ft	1	8
Accessories			
SDC-001	SDS Spinner Kit (includes 10 assemblies)	10	10
SDC-002	SDS End Plate Kit	4	2
SDC-003	SDS Collet Kit (includes 4 collet assemblies)	4	1
SDC-004	SDS Clamp Kit (includes 4 clamps)	4	2
SDC-005	SDS Small Lock Pin Kit	2	1