

FIBERLIGN® LITE SUPPORT

The **FIBERLIGN Lite Support (FLS)** system is designed to gently but firmly support ADSS cable at tangent locations. It is designed for shorter spans up to 300 feet. The dual insert design supports multiple ADSS cables and features stacking capabilities to future-proof installations and cut down on the number of pole attachments.

FEATURES AND BENEFITS

- Can be used with standard round-profile ADSS cables and flat drop ADSS cables
- Dual inserts can support two standard ADSS cables; multiple ADSS drop cables; or one standard ADSS cable and multiple ADSS flat drop cables
- Housings can be stacked to add more cables within the same pole space
- Mounts to a pole with a 5/8" through bolt or with 3/4" wide high-strength banding
- Supports span lengths up to 300 ft (91 m) NESC Heavy
- Supports line angles up to 20 degrees for most applications
- Housing halves are made from a high-strength, dielectric material
- Inserts are made from a soft, pliable dielectric material that gently grips and cushions the cable within the housing
- Highly abrasive-resistant surface of the housing allows it to be used as a stringing traveler at the structure

SPECIFICATIONS

The support performance depends upon the specific cable outer diameter, initial cable tension, NESC loading condition, and other factors. The **FIBERLIGN® Lite Support** is designed for a cable system with light tensions and short spans.

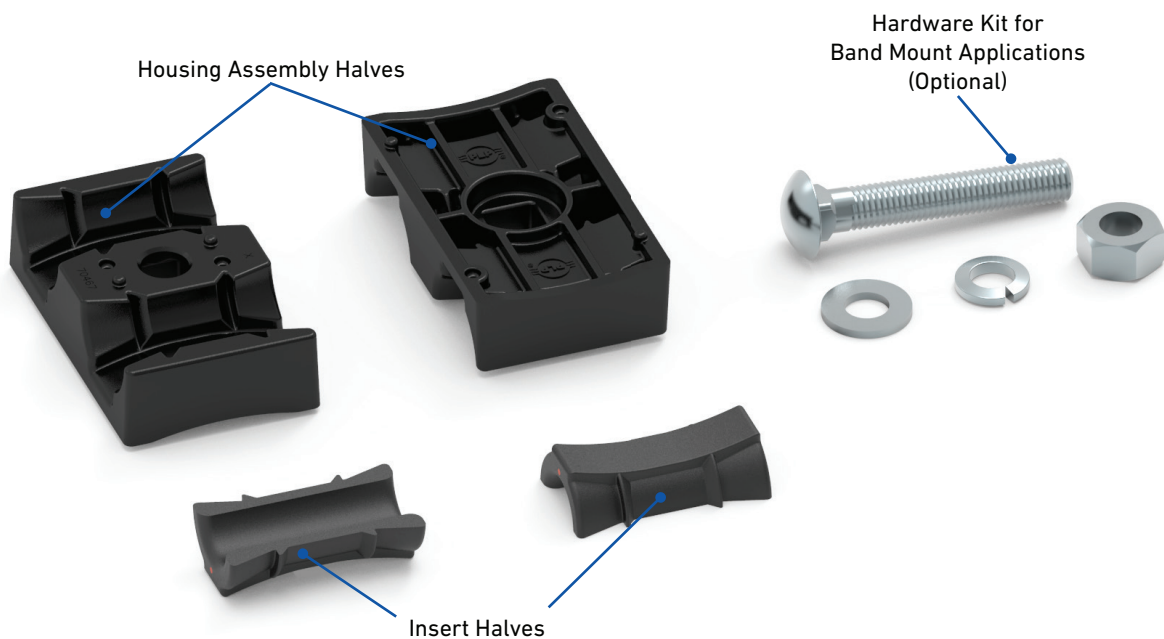
FIBERLIGN Lite Support

Cable System Requirements			
Maximum Span Length ¹		Maximum Line Angle for Stringing Operations ²	Maximum Line Angle for Permanent Installations ²
ft	m	degrees	
300	91	10	20

¹NESC Heavy

²Consult PLP for exceptions

COMPONENTS

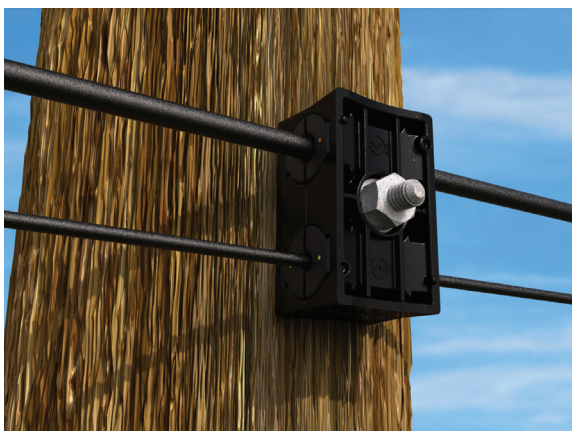


Component	Description
Housing Assembly Halves	With the top insert removed, the housing can be used for stringing in cable and is capable of handling up to a 1-1/4" (32 mm) diameter mechanical swivel with pulling in grip. Housing halves have a molded center hole to accept a standard 5/8" through bolt.
Insert Halves	Slotted to accept cables with diameters up to 1.054" (26.8 mm), as well as flat drop cables. Designed to cushion the cable under loads; hourglass shape creates a wedge-action grip when unbalanced loads exist. Color-coded for ease of identification.
Hardware Kit for Band Mount Applications (Optional)	Used to clamp the housing assembly halves together after the assembly has been banded to the structure.

MOUNTING OPTIONS

Bolt Mount

- Attached with a 5/8"-11 double-arming bolt
- Leave 4" to 5" (102 mm to 127 mm) of the bolt exposed to accept the support



Lite Support Bolted to Pole

Band Mount

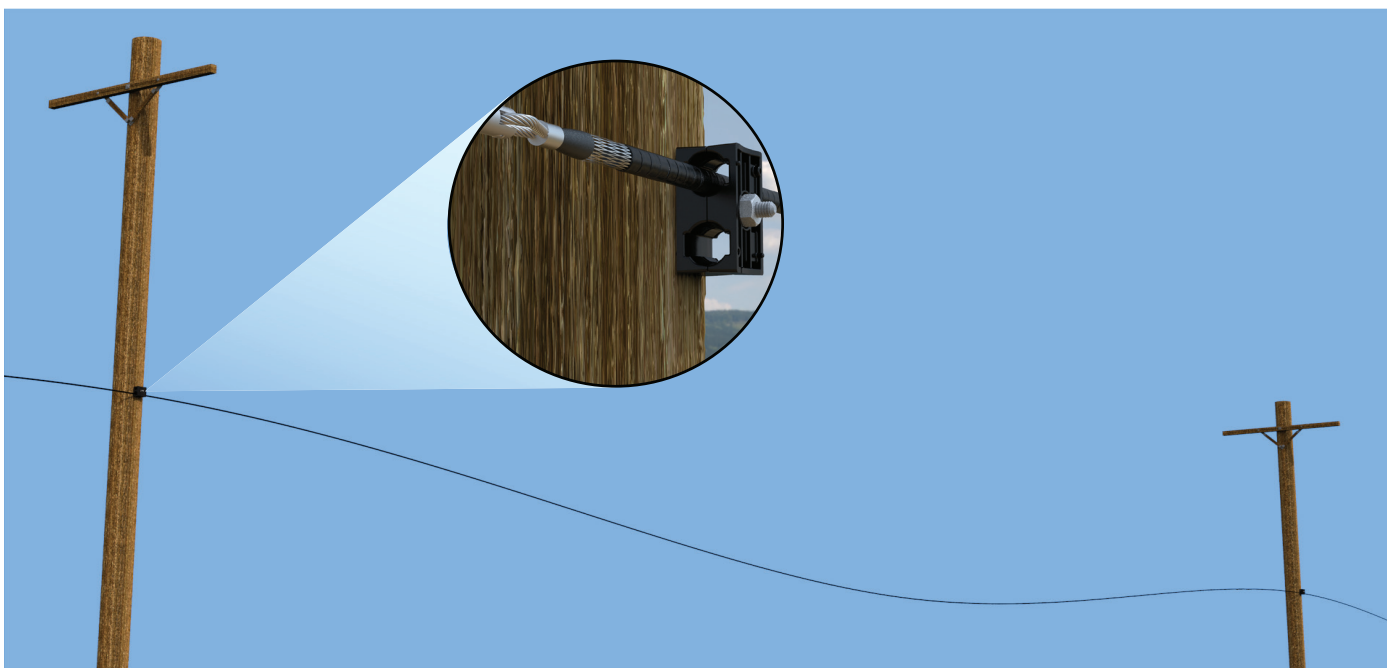
- 3/4" wide steel banding can be inserted into the molded groove to attach the support to a structure
- Banding not included



Lite Support Banded to Pole

STRINGING OPERATIONS

- Housing assembly allows up to 10 degree line angles
- Molded cavity will accept up to 1-1/4" diameter mechanical swivel with pulling-in grip
- Eliminates the need for conventional stringing travelers

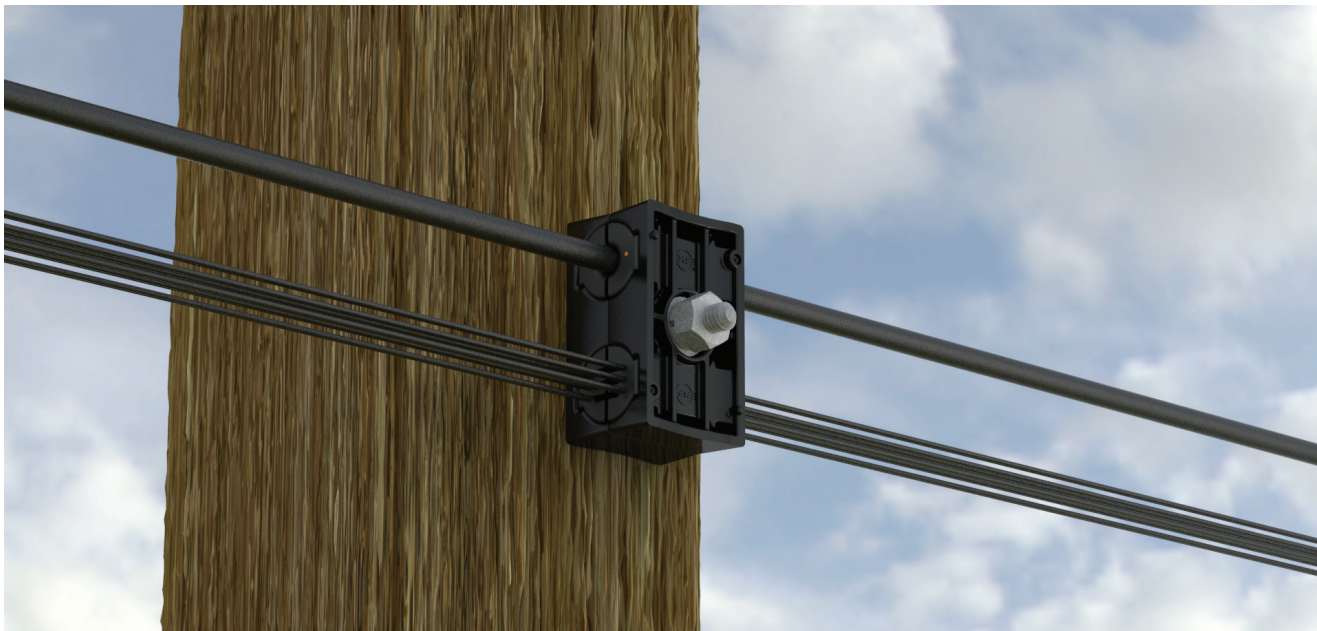


Stringing in Cable with FIBERLIGN Lite Supports

SPACE SAVING OPTIONS

Dual Inserts

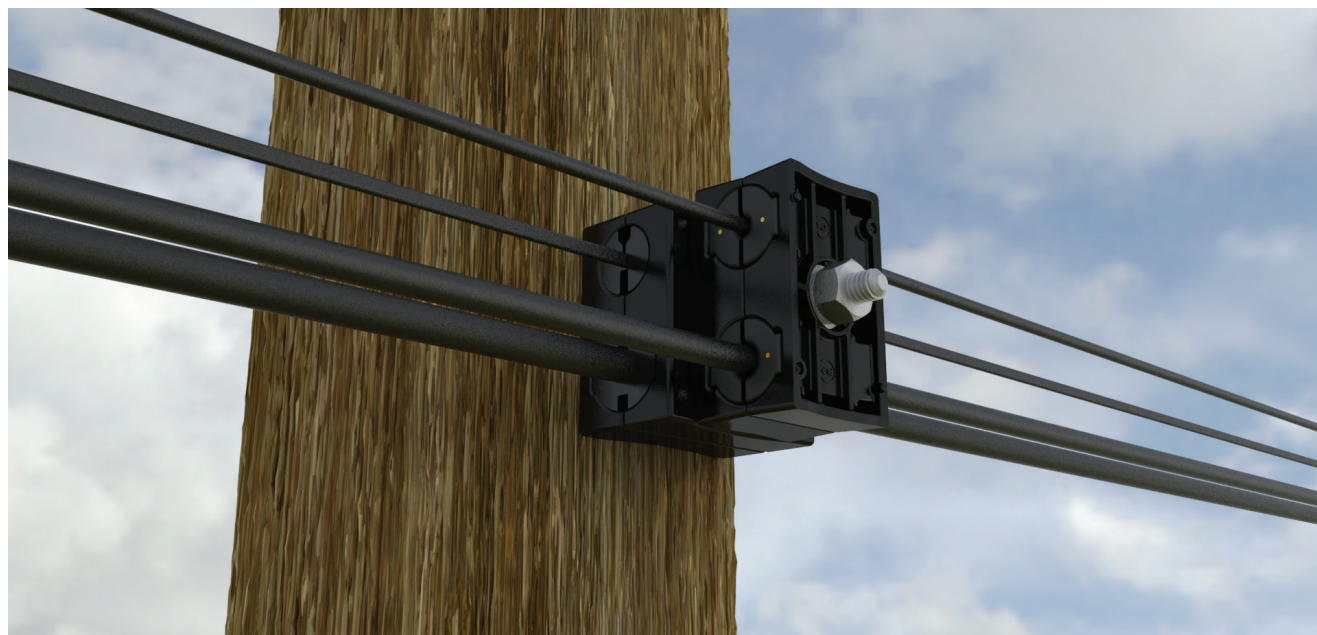
- Kits include one insert set unless otherwise specified
- Additional inserts can be ordered separately



FIBERLIGN Lite Support with Dual Inserts

Stacking

- Allows for greater density at a single attachment location
- Adjust length of exposed bolt to stack multiple housings
- Molded-in features prevent the stacked houses from rotating



FIBERLIGN Lite Support stacked with the Legacy FIBERLIGN Lite Support



ORDERING INFORMATION

Select the appropriate **FIBERLIGN® Lite Support** based on the cable diameter. If the cable you are using does not fall within any of the published ranges, please contact PLP for further assistance.

- Each Lite Support includes one insert set
- Additional inserts can be ordered, if necessary – see next page
- Each insert part number includes one set of inserts

FLS Assemblies (Round-Profile Drop Cables)

Catalog Number		Cable Diameter Range		Color Code
Support (includes insert)	Support with Banding Hardware Kit	in	mm	
4800301	4800301H2	0.226 – 0.275	5.7 – 6.9	Red
4800302	4800302H2	0.276 – 0.325	7.0 – 8.2	Yellow
4800303	4800303H2	0.326 – 0.375	8.3 – 9.5	Pink
4800304	4800304H2	0.376 – 0.425	9.6 – 10.7	Gray
4800305	4800305H2	0.426 – 0.475	10.8 – 12.0	Black
4800306	4800306H2	0.476 – 0.525	12.1 – 13.3	Blue
4800307	4800307H2	0.526 – 0.575	13.4 – 14.6	Orange
4800308	4800308H2	0.576 – 0.625	14.6 – 15.8	Brown
4800309	4800309H2	0.626 – 0.675	15.9 – 17.1	Green
4800310	4800310H2	0.676 – 0.750	17.2 – 19.0	White
4800311	4800311H2	0.751 – 0.825	19.1 – 20.9	Red
4800312	4800312H2	0.826 – 0.900	21.0 – 22.8	Yellow
4800313	4800313H2	0.901 – 0.975	22.9 – 24.7	Pink
4800314	4800314H2	0.976 – 1.050	24.8 – 26.6	Gray
4800300	Housing Only			
4800500	Banding Hardware			

Custom Dual Inserts, including a combination of one small insert size and one large insert size, can be created. Contact PLP for further details.

Multi-Drop Cushion Assembly

Catalog Number		Cable Type*	Flat Drop Dimensions		Number of Cables
Support (includes insert)	Support with Banding Hardware Kit		L x W ¹		
			in	mm	
4800350	4800350H2	Flat Drop	.32 x .17	8.1 x 4.3	6
		ROC™ Drop	.21 x .12	5.4 x 3	

*Can support either Flat Drop or ROC™ Drop Cable, but not both.

ORDERING INFORMATION

Select the appropriate **FIBERLIGN® Lite Support Insert Set** based on the cable diameter. If the cable you are using does not fall within any of the published ranges, please contact PLP for further assistance.

- Each catalog number includes two insert halves to make one set
- Each Lite Support includes one set of inserts
- If utilizing both cavities, order additional inserts using the tables below
- Each insert part number includes one set of inserts

Insert Set

Catalog Number	Cable Diameter Range		Color Code
	in	mm	
00070468	0.226 – 0.275	5.7 – 6.9	Red
00070469	0.276 – 0.325	7.0 – 8.2	Yellow
00070470	0.326 – 0.375	8.3 – 9.5	Pink
00070471	0.376 – 0.425	9.6 – 10.7	Gray
00070472	0.426 – 0.475	10.8 – 12.0	Black
00070473	0.476 – 0.525	12.1 – 13.3	Blue
00070474	0.526 – 0.575	13.4 – 14.6	Orange
00070475	0.576 – 0.625	14.6 – 15.8	Brown
00070476	0.626 – 0.675	15.9 – 17.1	Green
00070477	0.676 – 0.750	17.2 – 19.0	White
00070478	0.751 – 0.825	19.1 – 20.9	Red
00070479	0.826 – 0.900	21.0 – 22.8	Yellow
00070480	0.901 – 0.975	22.9 – 24.7	Pink
00070481	0.976 – 1.050	24.8 – 26.6	Gray



Insert Set

Multi-Drop Cushion Insert Set

Catalog Number	Cable Type*	Flat Drop Dimensions		Number of Cables
		L x W ¹		
		in	mm	
00070490	Flat Drop	.32 x .17	8.1 x 4.3	6
	ROC™ Drop	.21 x .12	5.4 x 3	

*Can support either Flat Drop or ROC™ Drop Cable, but not both.

