

## COYOTE® 10" PEDESTAL

**COYOTE Pedestals** provide easy customization options to adapt to your fiber or copper splicing needs at each location in your network. Each pedestal is pre-assembled and can be configured to accept various fiber optic splice tray types, fiber or copper terminals, fiber cross-connect bulkheads, or management brackets for copper splices. In addition, the organizer can be removed and a metal frame can be inserted into the base to attach fiber closures and cabinets, such as the COYOTE STP-L, STP-XL, and COYOTE PedBox®, to provide additional protection for your splices. The versatility that COYOTE Pedestals provide allows you to create the network you desire.

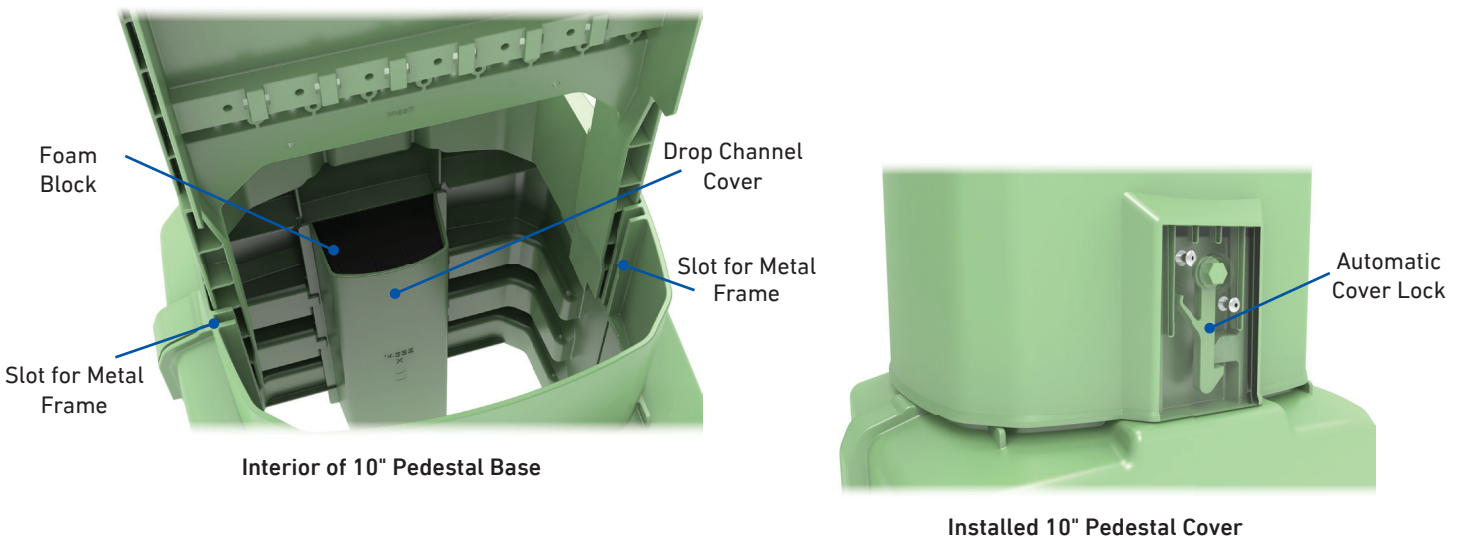
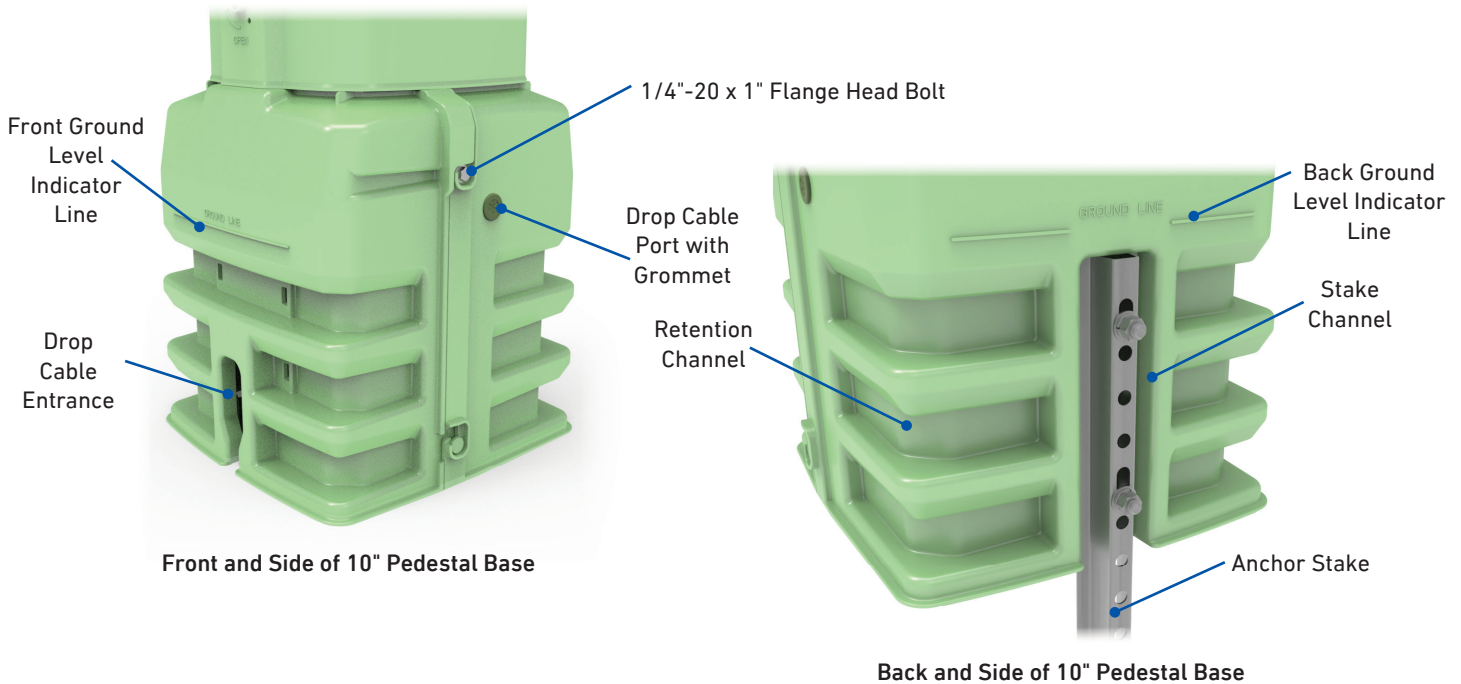
### FEATURES AND BENEFITS

- Each pedestal ships pre-assembled with a base, automatic locking cover, and internal organizer with a grounding busbar
- Cover and base are manufactured out of a UV/FR stabilized material designed to withstand weathering
- Split base design enables easy installation around pre-installed duct/cables and simplifies replacement of existing pedestals
- Patented automatic cover locking system provides secure access without the need for additional hardware
- Grounding busbar isolates connections and is equipped with a ground wire terminal (#4 – #10)
- Supports a wide range of fiber and copper applications, including splicing, terminals, hardened connectivity, and cross-connects
- Organizer accepts COYOTE Flip Trays, LITE-GRIP® Splice Trays, and Legacy Splice Trays for maximum flexibility
- Metal frame organizer can be ordered with dual offset brackets or STP Pro Series mounting brackets
- All fasteners are constructed of stainless steel to prohibit corrosion and can be secured or loosened using common tools (216 can wrench, 1/4" nut driver, or Phillips screwdriver)
- Designed and tested in accordance with GR-13-CORE requirements



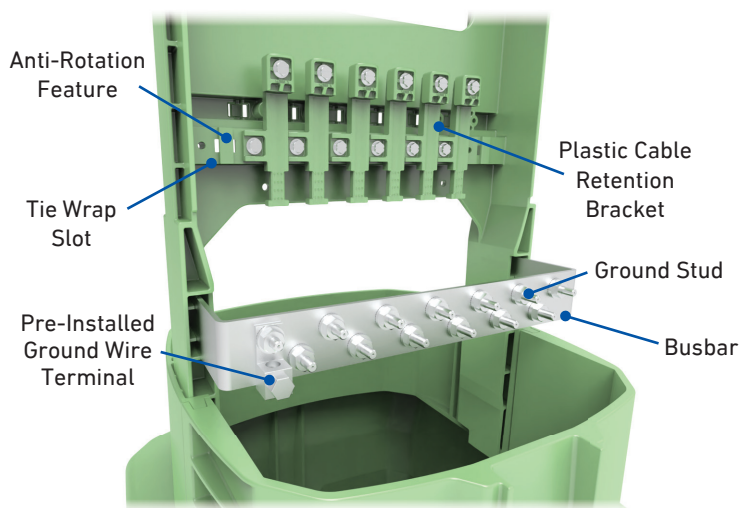
## PEDESTAL BASE AND COVER

- Base halves can be easily removed and attached by partially loosening each side bolt
- Ground level indicator lines located on the front and rear of the base help ensure proper burial depth
- Dedicated drop cable entrance enables reduced trench depth, minimizing site disruption and installation time
- Drop cable entry ports on each side of the base allow temporary drops to be installed without trenching
- Molded retention channels in the base help resist ground movement and frost heave for long-term stability
- Rear stake channel accepts any size pedestal stake when additional anchoring is required
- Foam block protects drop cables as they are routed through the drop channel of the base
- Patented automatic cover locking system allows quick access inside the pedestal with a quarter turn of a 216 can wrench

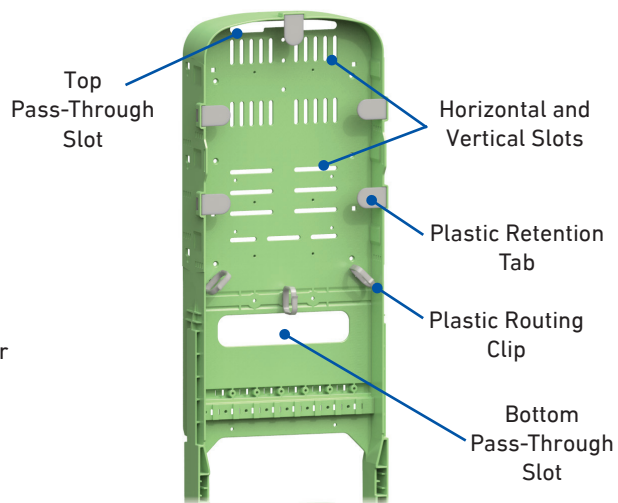


## PEDESTAL GROUNDING BUSBAR AND ORGANIZER

- Organizer can secure up to 6 incoming and 8 outgoing cables for clean, organized routing
- Molded anti-rotation features and plastic cable retention brackets help prevent cable movement and maintain bend radius control
- Grounding busbar supports up to 13 isolated connections and includes a ground wire terminal that accepts up to a #4 ground wire
- Slotted mid-plane allows fiber and copper terminals to be mounted directly to the organizer for efficient layouts
- Top and bottom pass-through slots enable cables or buffer tubes to be routed to either side of the organizer
- Removable retention tabs and routing clips provide simple, flexible management of cables and buffer tubes

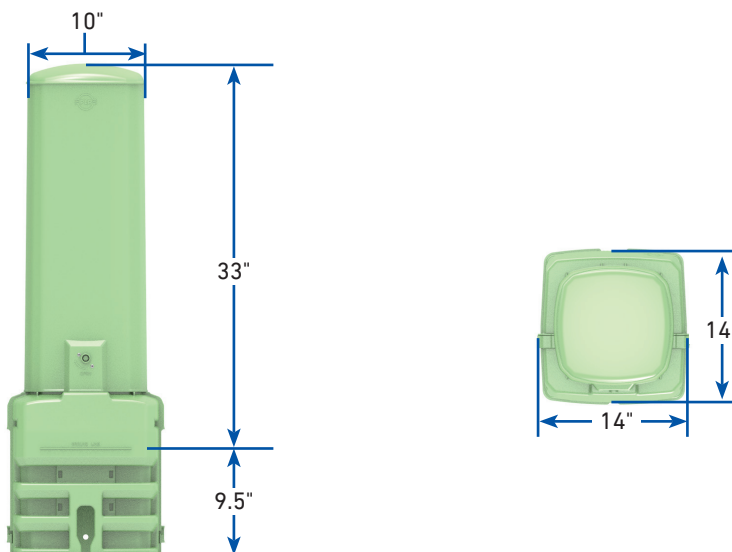


10" Pedestal Cable Retention and Grounding Busbar



Front of 10" Pedestal Organizer

## DIMENSIONS

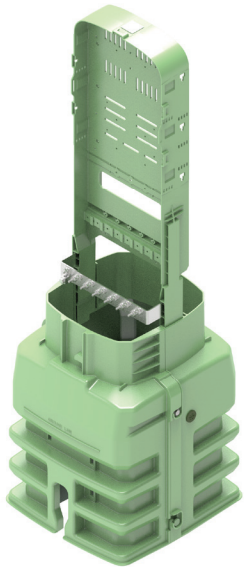




## COYOTE® 10" PEDESTAL WITH UNIVERSAL ORGANIZER

- Configurable with COYOTE® Flip Trays, LITE-GRIP® Splice Trays, and Legacy Splice Trays to support a wide range of network designs
- Internal cross-connect features are available across all splice tray configurations, enabling efficient service distribution and management
- Accommodates hardened connectivity solutions, including up to 8-port MST and Corning Evolv® terminals
- Optional routing handles allow proper storage and “waterfall” management of copper splices to maintain organization and accessibility

### COMPONENTS



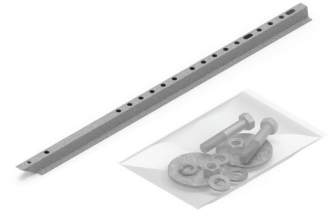
COYOTE® 10" Pedestal, Universal Organizer w/ Busbar and Split Base



COYOTE® 10" Pedestal, Dome w/Automatic Lock



Small Parts Bag



Anchor Stake Kit (Optional)



Cable Retention Kits



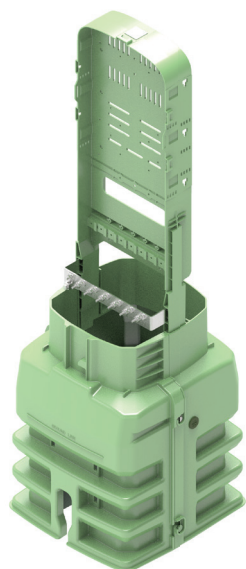
### COYOTE® 10" Pedestal Kits with Universal Organizer

Catalog Number	Description
COYPED10-UOS	COYOTE® 10" Pedestal, Universal Organizer <b>with Anchor Stake</b> – Includes (1) 10" Pedestal, Universal Organizer with Busbar and Split Base, (1) Dome, (1) Small Parts Bag, (2) Cable Retention Kits, and (1) Anchor Stake with Attachment Hardware
COYPED10-UON	COYOTE® 10" Pedestal, Universal Organizer <b>without Anchor Stake</b> – Includes (1) 10" Pedestal, Universal Organizer with Busbar and Split Base, (1) Dome, (1) Small Parts Bag, and (2) Cable Retention Kits

## SPLICING UNIVERSAL ORGANIZER KITS

- Combines multiple different SKUs into one easy-to-order part number
- Simplifies storage and transportation of pedestal kits
- Splicing COYOTE® Pedestal Kits include: (1) COYOTE® Pedestal with Universal Organizer, (1) Splice Tray, (1) Tray Kit, and the option to include (1) Anchor Stake

## COMPONENTS



COYOTE 10" Pedestal,  
Universal Organizer w/  
Busbar and Split Base



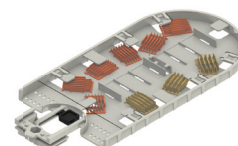
COYOTE 10" Pedestal,  
Dome w/Automatic Lock



Small Parts Bag



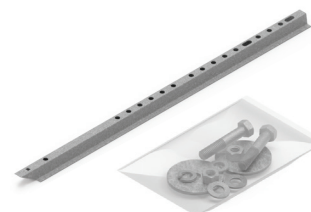
Tray Kit  
(Catalog Number:  
COYPED10-FLIPTK shown)



Splice Tray  
(Catalog Number:  
80814405 shown)



Cable Retention Kits



Anchor Stake Kit  
(Optional)

### Splicing COYOTE 10" Pedestal with Universal Organizer Kits

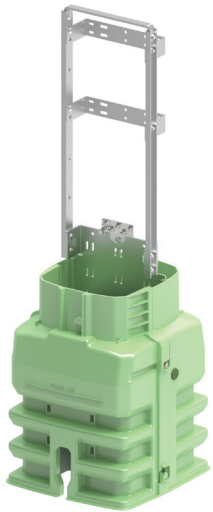
Catalog Number	Description
COYPED10-UON-1-1	COYOTE 10" Pedestal with Universal Organizer and 80813152 Splice Tray
COYPED10-UOS-1-1	COYOTE 10" Pedestal with Universal Organizer, 80813152 Splice Tray, and Anchor Stake
COYPED10-UON-2-1	COYOTE 10" Pedestal with Universal Organizer and 80808945 Splice Tray
COYPED10-UOS-2-1	COYOTE 10" Pedestal with Universal Organizer, 80808945 Splice Tray, and Anchor Stake
COYPED10-UON-3-1	COYOTE 10" Pedestal with Universal Organizer and 80814405 Flip Tray
COYPED10-UOS-3-1	COYOTE 10" Pedestal with Universal Organizer, 80814405 Flip Tray, and Anchor Stake



## COYOTE® 10" PEDESTAL WITH METAL FRAME, DUAL OFFSET BRACKETS

- Accommodates most copper and fiber terminals for flexible network builds
- Provides ample space to maintain proper fiber bend radius for MST and other hardened drop cables
- Can accommodate COYOTE® PedBox® and other distribution splice enclosures for expanded deployment options

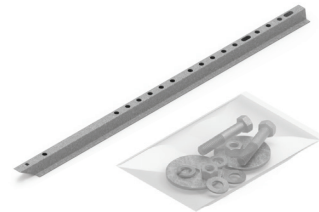
### COMPONENTS



COYOTE® 10" Pedestal, Metal Frame and Split Base



COYOTE® 10" Pedestal, Dome w/Automatic Lock



Anchor Stake Kit (Optional)

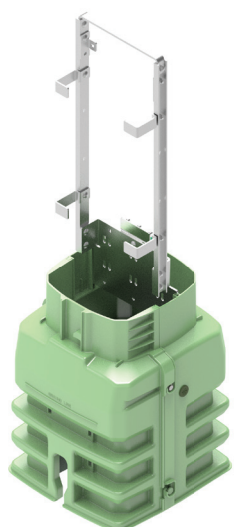
### COYOTE® 10" Pedestal Kits with Metal Frame

Catalog Number	Description
COYPED10-MFD0S	COYOTE® 10" Pedestal, Metal Frame with Dual Offset Brackets <b>with Anchor Stake</b> – Includes (1) 10" Pedestal, Metal Frame and Split Base, (1) Dome, and (1) Anchor Stake with Attachment Hardware
COYPED10-MFD0N	COYOTE® 10" Pedestal, Metal Frame with Dual Offset Brackets <b>without Anchor Stake</b> – Includes (1) 10" Pedestal, Metal Frame and Split Base, and (1) Dome

## COYOTE® 10" PEDESTAL WITH METAL FRAME, STP PRO SERIES BRACKETS

- Specially designed to accommodate COYOTE® STP Pro Series fiber optic closures (STP-L and STP-XL) for seamless integration
- Supports both standard and terminal STP Pro Series configurations to match a wide range of network architectures
- Includes slack storage brackets for simplified feed and drop cable slack management

### COMPONENTS



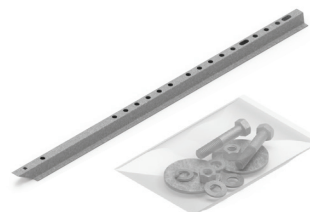
COYOTE® 10" Pedestal,  
Metal Frame and  
Split Base



COYOTE® 10" Pedestal,  
Dome w/Automatic Lock



STP Pro Series Mounting  
Hardware



Anchor Stake Kit  
(Optional)

### COYOTE® 10" Pedestal Kits with Metal Frame

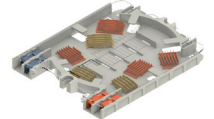
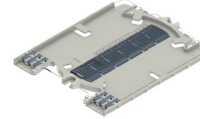
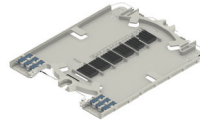
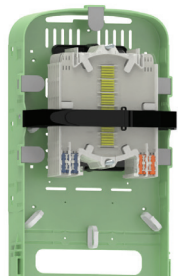
Catalog Number	Description
COYPED10-MFSTPS	COYOTE® 10" Pedestal, Metal Frame, STP Pro Series Brackets <b>with Anchor Stake</b> – Includes (1) 10" Pedestal, Metal Frame and Split Base, (1) Dome, (1) STP Pro Series Mounting Hardware Bag, and (1) Anchor Stake with Attachment Hardware
COYPED10-MFSTPN	COYOTE® 10" Pedestal, Metal Frame, STP Pro Series Brackets <b>without Anchor Stake</b> – Includes (1) 10" Pedestal, Metal Frame and Split Base, (1) Dome, and (1) STP Pro Series Mounting Hardware Bag



## FIBER SPLICING

### COYOTE® LITE-GRIP® Splice Trays for Fiber Splicing

The LITE-GRIP® Tray Kit enables installation of either LITE-GRIP splice trays or legacy COYOTE splice trays within the pedestal, providing flexible configuration options. Both tray styles are injection molded and feature a hinged, clear plastic cover that protects fibers while allowing easy visual inspection. LITE-GRIP splice trays incorporate retention sleeves engineered to securely grip buffer tubes, pigtails, or transport tubing without over-compression during installation. The 10" Pedestal accommodates both long and short versions of LITE-GRIP and legacy COYOTE splice trays.



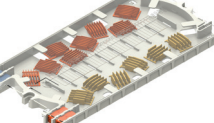
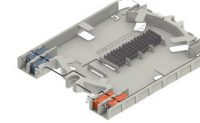
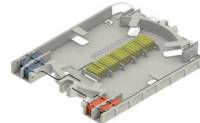
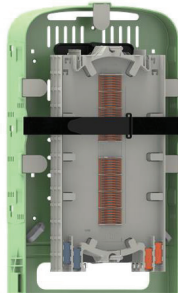
=

**Catalog Number:**  
**COYPED10-LGTK**  
COYOTE® 10"  
LITE-GRIP® Tray Kit

+

OR

OR



**Catalog Number:**  
**8080958**  
COYOTE LITE-GRIP  
Splice Tray,  
Short - Low Profile  
Single Fusion 24 CT.

**Catalog Number:**  
**80813152**  
COYOTE LITE-GRIP  
Splice Tray,  
Short - Low Profile  
Single Fusion 36 CT.

**Catalog Number:**  
**80814649**  
COYOTE LITE-GRIP  
Splice Tray,  
Short - Deep Profile  
48 SF/144 MF

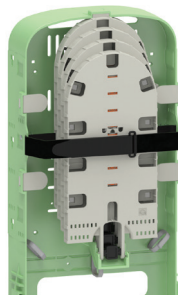
**Catalog Number:**  
**80808945**  
COYOTE LITE-GRIP  
Splice Tray, Short - Deep  
Profile Single Fusion/Double  
Stack 40 CT.

**Catalog Number:**  
**LGSTR144**  
COYOTE LITE-GRIP  
Splice Tray, Short - Deep  
Profile Ribbon/Mass  
Fusion 144 CT.

**Catalog Number:**  
**80814650**  
COYOTE LITE-GRIP  
Splice Tray,  
Long - Deep Profile  
96 SF/288 MF

### COYOTE® Flip Trays for Fiber Splicing

The Flip Tray Installation Kit enables integration of COYOTE Flip Trays within the pedestal, providing flexible access and efficient workflow options. Flip trays can be hinged downward to access stored buffer tubes or removed from the organizer to allow multiple splicers to work simultaneously outside of the pedestal. When installed, trays are held in a locked and protected position to safeguard fibers. The 10" Pedestal supports both Medium and Heavy-Duty COYOTE Flip Trays.



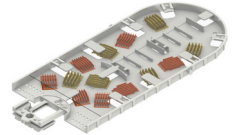
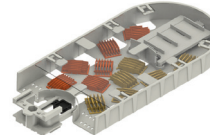
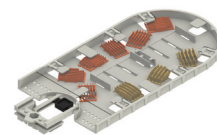
=

**Catalog Number:**  
**COYPED10-FLIPTK**  
COYOTE Flip Tray Kit

+

OR

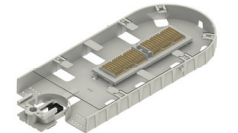
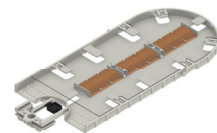
OR



**Catalog Number:**  
**80814405**  
COYOTE Flip Tray,  
Low Profile SF/MF  
Flip Tray 72/144 CT.

**Catalog Number:**  
**80814406**  
COYOTE Flip Tray,  
Deep Profile SF/MF  
Flip Tray 72/288 CT.

**Catalog Number:**  
**80813238**  
COYOTE HD Flip Tray,  
Thin Profile SF/MF  
HD Flip Tray 72/288 CT.



**Catalog Number:**  
**80813301**  
COYOTE HD Flip Tray, Thin  
Profile Single Fusion/ Double  
Stack 108 CT.

**Catalog Number:**  
**80813121**  
COYOTE HD Flip Tray, Deep  
Profile Ribbon/Mass  
Fusion 288 CT.

**Catalog Number:**  
**80813779**  
COYOTE HD Flip Tray, Deep  
Profile Ribbon/Mass  
Fusion 576 CT.

## COYOTE® SPLICE TRAYS

### COYOTE® Splice Tray Capacity Chart for COYOTE 10" Pedestal

PLP Catalog Number	Description	Image	Splice Type	Max Trays per Closure	Closure Max Splice Capacity
80809958	LITE-GRIP® Short Low Profile (24 CT)		Single Fusion (Single Stack)	6	144
80813152	LITE-GRIP Short Low Profile (36 CT)		Single Fusion (Single Stack)	6	216
80808945	LITE-GRIP Short Deep Profile (40 CT)		Single Fusion (Double Stack)	3	120
80814649	LITE-GRIP® Long Deep Profile (48 CT SF/144 CT MF)		Single Fusion (Double Stack) OR Mass Fusion/ Ribbon	3	144 SF 432 MF
LGSTR144	LITE-GRIP Short Deep Profile (144 CT)		Mass Fusion/ Ribbon	3	432
80814650	LITE-GRIP® Long Deep Profile (96 CT SF / 288 CT MF)		Single Fusion (Double Stack) OR Mass Fusion	3	288 SF 864 MF



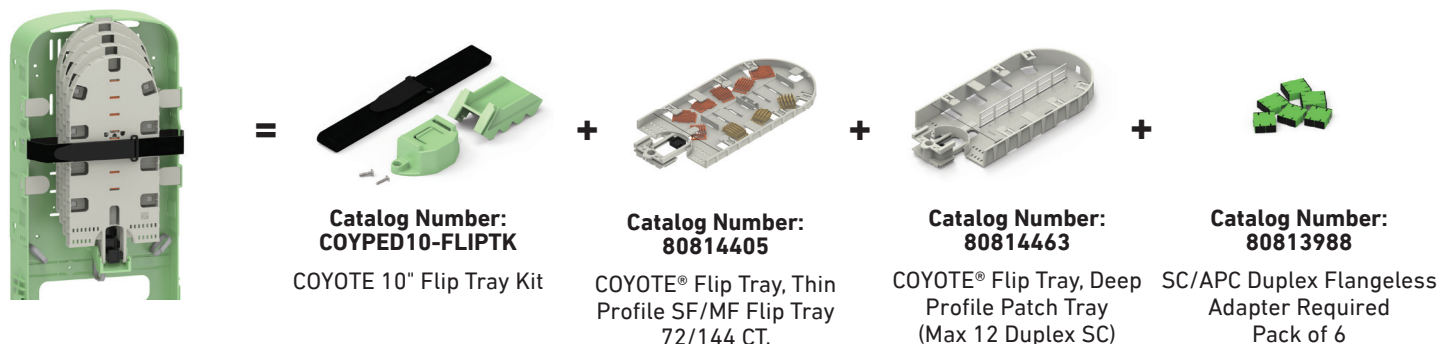
### COYOTE® Splice Tray Capacity Chart for COYOTE 10" Pedestal

PLP Catalog Number	Description	Image	Splice Type	Max Trays per Closure	Closure Max Splice Capacity
80814405	Flip Medium Thin Profile (72 CT SF/144 CT MF)		Single Fusion (Double Stack) OR Mass Fusion/ Ribbon	4	288 SF 288 MF
80814406	Flip Medium Deep Profile (72 CT SF / 288 CT MF)		Single Fusion (Double Stack) OR Mass Fusion/ Ribbon	2	144 SF 576 MF
80813238	HD Flip Long Thin Profile (72 CT SF / 288 CT MF)		Single Fusion (Double Stack) OR Mass Fusion/ Ribbon	4	288 SF 1,152 MF
80813301	HD Flip Long Thin Profile (108 CT)		Single Fusion (Double Stack)	4	432 SF
80813121	HD Flip Long Deep Profile (288 CT)		Mass Fusion/ Ribbon	2	576 MF
80813779	HD Flip Long Deep Profile (576 CT)		Mass Fusion/ Ribbon	2	1,152 MF

## FIBER SPLICING AND PATCHING

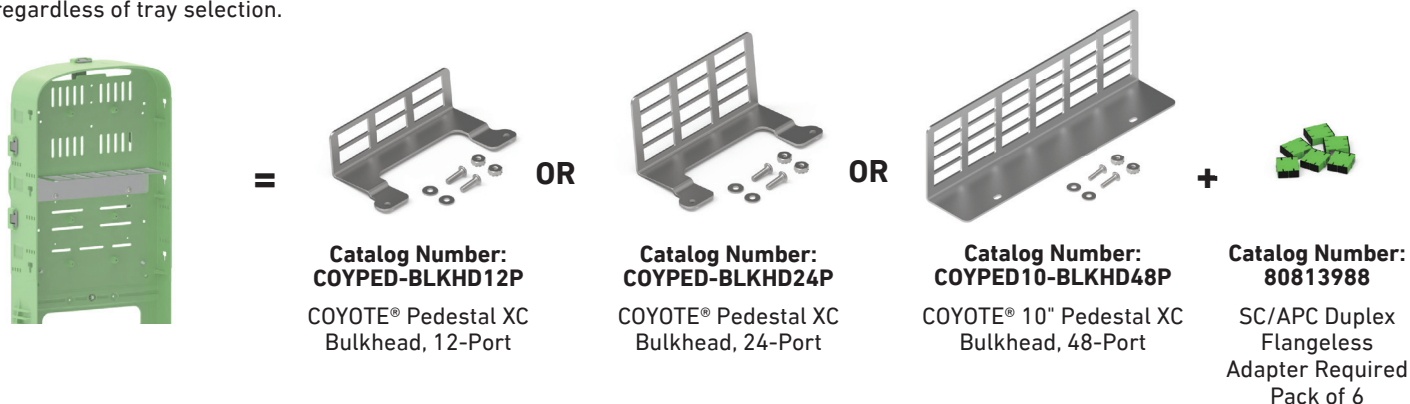
### Cross-Connect Patch Tray

The Patch Tray is installed in conjunction with COYOTE Flip Trays and provides plug-and-play connectivity using industry-standard connectors. It can be equipped with up to 24 SC or 48 LC adapter ports to support high-density applications. The patch tray hinges downward and locks into place, providing quick, secure access to connectors for service redirection—eliminating the need to re-splice fibers for routine changes.



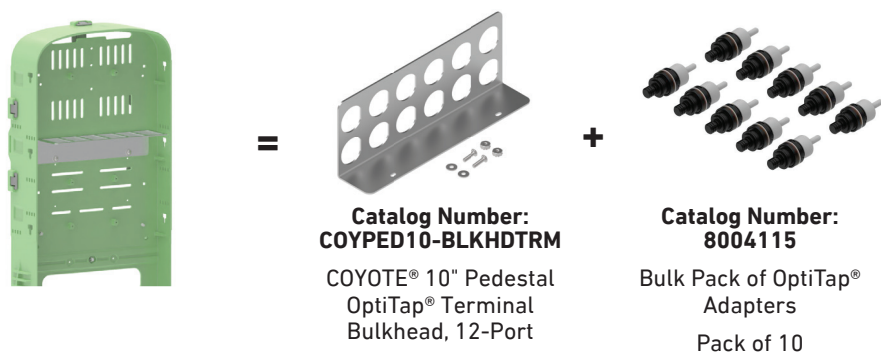
### Adapter Bulkhead

The Adapter Bulkhead mounts to the Universal Organizer opposite the splice tray side, expanding layout flexibility while enabling plug-and-play connectivity within the pedestal. The highest-density option (**Catalog Number: COYPED10-BLKHD48P**) supports up to 48 SC or 96 LC adapter ports for high-capacity applications. The bulkhead is compatible with all splice tray types, allowing seamless integration regardless of tray selection.



### OptiTap® Terminal Bulkhead

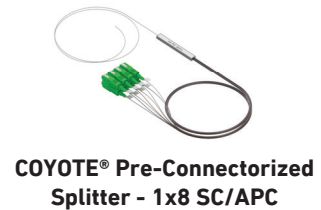
The OptiTap® Terminal Bulkhead mounts to the Universal Organizer opposite the splice tray side, increasing layout flexibility while delivering a hardened plug-and-play connectivity solution. The bulkhead supports up to 12 OptiTap® connections and is compatible with all splice tray types, allowing seamless integration regardless of tray selection.



OptiTap® is a registered trademark of Corning Cable Systems.



## COYOTE® CROSS-CONNECT ACCESSORIES



### COYOTE Pedestal Cross-Connect Accessories

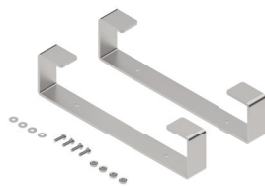
Catalog Number	Description
80813988	Flangeless Adapter Kit – Includes (6) SC/APC Duplex Flangeless Adapters
80813989	Flangeless Adapter Kit – Includes (6) SC/UPC Duplex Flangeless Adapters
80813990	Flangeless Adapter Kit – Includes (6) LC/APC Quad Flangeless Adapters
80813991	Flangeless Adapter Kit – Includes (6) LC/UPC Quad Flangeless Adapters
COYTRM-2PK-SCA-SB	Pigtail Kit – Includes (2) SC/APC 2 mm Jacketed Pigtails with Short Boot Connectors
COYTRM-2PK-SCU-SB	Pigtail Kit – Includes (2) SC/UPC 2 mm Jacketed Pigtails with Short Boot Connectors
COYTRM-3PK-SCA-SB	Pigtail Kit – Includes (3) SC/APC 2 mm Jacketed Pigtails with Short Boot Connectors
COYTRM-3PK-SCU-SB	Pigtail Kit – Includes (3) SC/UPC 2 mm Jacketed Pigtails with Short Boot Connectors
COYTRM-4PK-SCA-SB	Pigtail Kit – Includes (4) SC/APC 2 mm Jacketed Pigtails with Short Boot Connectors
COYTRM-4PK-SCU-SB	Pigtail Kit – Includes (4) SC/UPC 2 mm Jacketed Pigtails with Short Boot Connectors
COYTRM-4PK-LCA-SB	Pigtail Kit – Includes (4) LC/APC 2 mm Jacketed Pigtails with Short Boot Connectors
COYTRM-4PK-LCU-SB	Pigtail Kit – Includes (4) LC/UPC 2 mm Jacketed Pigtails with Short Boot Connectors
COYSP1X2SCA	COYOTE Pre-Connectorized Splitter - 1x2 SC/APC
COYSP1X4SCA	COYOTE Pre-Connectorized Splitter - 1x4 SC/APC
COYSP1X8SCA	COYOTE Pre-Connectorized Splitter - 1x8 SC/APC
COYSP1X16SCA	COYOTE Pre-Connectorized Splitter - 1x16 SC/APC
80807972	Hardened Adapter Installation Tool
8003715	OptiTap® Adapter Kit – Includes (1) OptiTap Adapter and (1) Installation Tool
8004115	Bulk Pack of OptiTap Adapters – Includes (10) OptiTap Adapters

## EXPANDED BUFFER TUBE STORAGE BRACKETS

The Expanded Buffer Tube Storage Brackets Kit installs on the feed side of the Universal Organizer in place of the standard fiber management clips, increasing buffer tube storage capacity and organization. The expanded brackets can retain up to twenty-four 12-count buffer tubes, providing storage for up to 288 fibers. Brackets can be mounted in multiple locations on the Universal Organizer, delivering maximum flexibility for routing and storage layouts.



=



**Catalog Number:  
COYPED10-EXBT**

COYOTE® Pedestal, 10" Expanded  
Buffer Tube Storage Brackets

## TERMINAL MOUNTING KIT

The Terminal Mounting Kit can be added to the Universal Organizer to support installation of Corning Evolv® terminals or MSTs within the pedestal. The bracket can be positioned on either the left or right side of the organizer, providing flexible placement options. Dual support legs allow 2-, 4-, 6-, 8-, or 16-port Evolv® terminals to slide easily into place, then be secured with an integrated hold-down strap. An MST can be mounted to the top of the bracket using the included hardware.



=



**Catalog Number:  
COYPED810-TM**

COYOTE® Pedestal, 10"  
Terminal Mounting Kit



## COPPER APPLICATIONS

---

### Routing Handles for Copper Splicing

The Routing Handles (Waterfall Brackets) install into the Universal Organizer to support copper applications where splices or modules require organized storage within the pedestal. The brackets provide a structured “waterfall” routing path, helping maintain organization and accessibility for copper splices and modules.



=

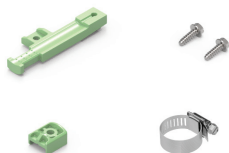


**Catalog Number:**  
**COYPED10-CWH**

COYOTE® 10" Pedestal  
Routing Handles



## COYOTE® PEDESTAL ACCESSORIES



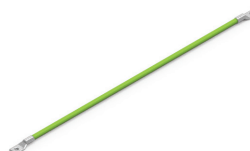
**Catalog Number:**  
**COYPED-CRB**

Cable Restraint  
Bracket Kit  
Pack of 20



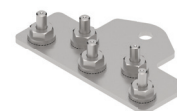
**Catalog Number:**  
**COYPED-DRPCHNL**

Drop Channel Kit



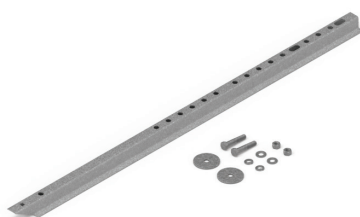
**Catalog Number:**  
**COYPED-BNDBRD**

Bonding Braid Kit  
Pack of 20



**Catalog Number:**  
**COYPED-GRDPLTEX**

Ground Plate Extension Kit



**Catalog Number:**  
**COYPED-AS42**

42" Anchor Stake Kit



**Catalog Number:**  
**COYPED-FBRTAB**

Fiber Retention Tab Kit  
Pack of 50



**Catalog Number:**  
**COYPED-FBRCLIP**

Fiber Cable  
Management Clip Kit  
Pack of 10



**Catalog Number:**  
**COYPED-DRPGMT**

Drop Port Grommet  
Pack of 20

Catalog Number	Description
COYPED-CRB	Cable Restraint Bracket Kit – Includes (20) Strength Member Brackets, (20) Strength Member Bracket Caps, (20) Hose Clamps, and (40) Hex Head Self-Tapping Screws
COYPED-DRPCHNL	Drop Channel Kit – Includes (1) Drop Channel and (1) Foam Plug
COYPED-BNDBRD	Bonding Braid Kit – Includes (20) Bonding Braids
COYPED-AS42	Anchor Stake Kit – Includes (1) 42" Anchor Stake and Mounting Hardware
COYPED-AS32	Anchor Stake Kit – Includes (1) 32" Anchor Stake and Mounting Hardware
COYPED-FBRTAB	Retention Tab Kit – Includes (50) Retention Tabs
COYPED-FBRCLIP	Fiber Cable Management Clip Kit – Includes (10) Fiber Routing Clips
COYPED-DRPGMT	Base Drop Grommet Kit – Includes (20) Base Drop Grommets
COYPED-GRDPLTEX	Grounding Plate Kit Extension Kit

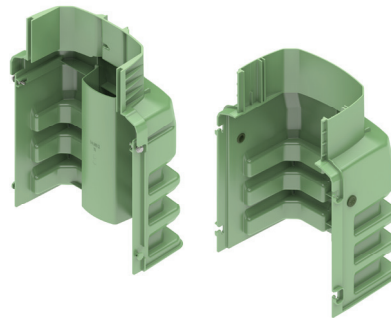


## COYOTE® 10" PEDESTAL REPLACEMENT KITS



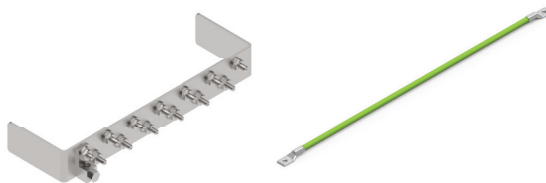
**Catalog Number:  
COYPED10-DOME**

Dome Replacement Kit



**Catalog Number:  
COYPED10-BASE**

Base Replacement Kit



**Catalog Number:  
COYPED10-GRDPLT**

Ground Plate Kit

Catalog Number	Description
COYPED10-DOME	COYOTE 10" Pedestal Dome Replacement Kit
COYPED10-BASE	COYOTE 10" Pedestal Base Replacement Kit
COYPED10-GRDPLT	Grounding Plate Kit for COYOTE 10" Pedestal – Includes (1) Ground Plate Assembly and (1) Bonding Braid



GLOBAL HEADQUARTERS 660 BETA DRIVE CLEVELAND, OHIO 44143  
+1 440 461 5200 INFO@PLP.COM PLP.COM

© 2026 Preformed Line Products Printed in U.S.A. CO-SS-1349 02.26.00