



FIBERLIGN® SINGLE-PORT CABLE RESTRAINT BRACKET (CRB)

FOR COYOTE 9.5 DOME CLOSURES

INSTALLATION INSTRUCTIONS



IMPORTANT SAFETY INFORMATION

READ AND COMPLETELY UNDERSTAND ALL INSTRUCTIONS BEFORE INSTALLING PRODUCT. FAILURE TO FOLLOW THESE INSTRUCTIONS MAY RESULT IN PERSONAL INJURY OR DEATH.

This product is intended for use by trained technicians only. This product should not be used by anyone who is not familiar with and not trained to use it. When working in the area of energized lines, extra care should be taken to prevent accidental electrical contact. Be sure to wear proper safety equipment per your company protocol. These instructions are not intended to supersede any company construction or safety standards. These instructions are offered only to illustrate safe installation for the individual. PLP products are intended for the specified application only. Do not modify this product under any circumstances. Do not reuse or reinstall any PLP product unless that capability is expressly indicated in the product's Installation Instructions. For proper performance and personal safety, be sure to select the proper PLP product before installation. PLP products are precision devices. To ensure proper performance, they should be stored in cartons under cover and handled carefully.

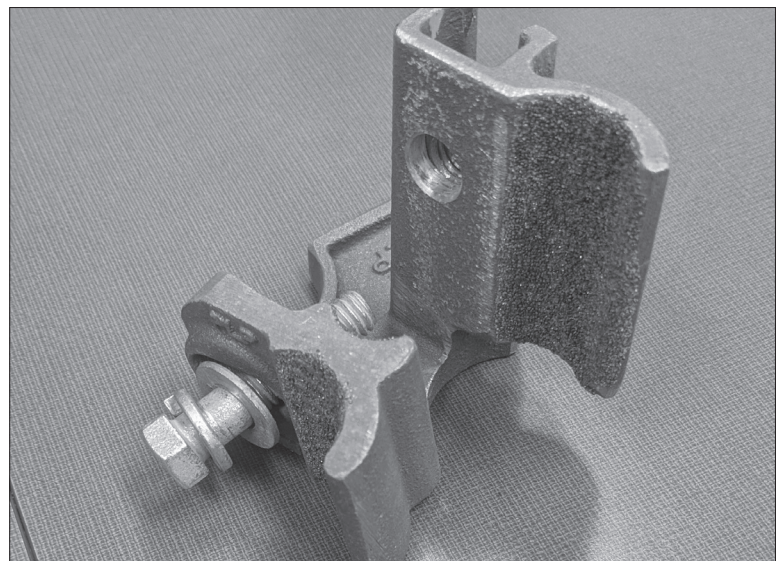
1

When adding a Single-Port CRB, use the ports closest to the CRB base, if possible. These are ports 3 and 6 in the image.



2

Remove the keeper from the clamp as shown.



- 3 Attach the single-port clamp by slotting it into the correct tooth on the base clamp and onto the grounding stud. Secure the single-port CRB using the supplied hardware to the grounding stud. Tighten with a can wrench.



- 4 Prep and install the cable following the previous steps. A fully installed branch cable is shown. Reinstall the keeper to capture cable. The double-sided keeper covers the lower range 0.360" - 0.800" (small clamp groove) and upper range 0.800" - 1.100" (large clamp groove).

