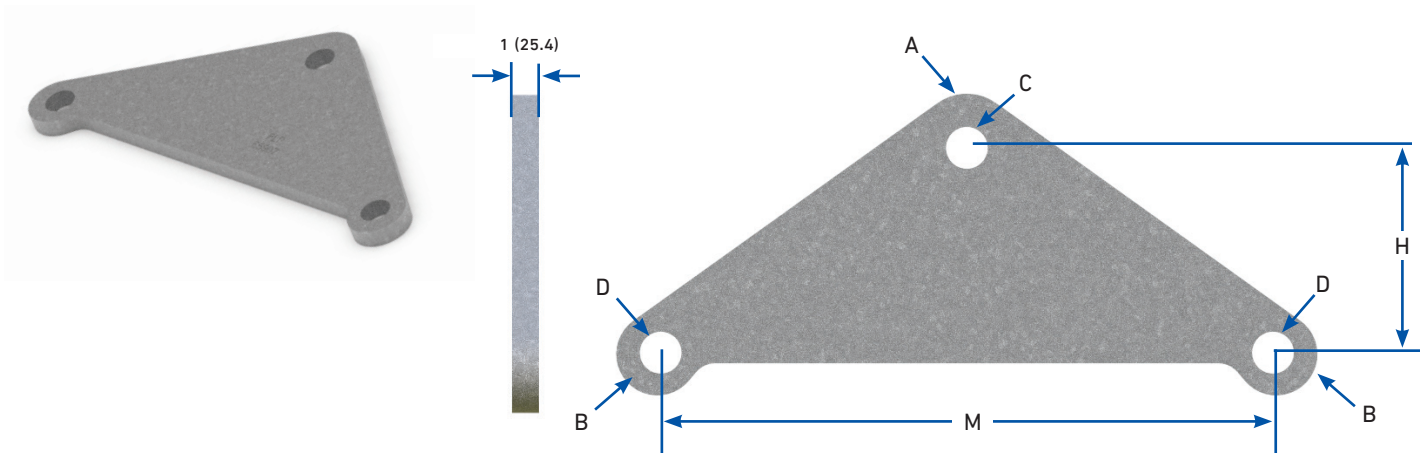


YOKE PLATE FOR DOUBLE AGS



Component	Material
Material	Galvanized Steel

Catalog Number	Dimensions						Plate Thickness	Vertical Ultimate Strength
	in (mm)							
	A	B	C	D	M	H	in (mm)	lb (kN)
	Radius	Radius	Diameter	Diameter				
YP-5907	1 (25.4)	13/16 (20.6)	13/16 (20.6)	13/16 (20.6)	12 (304.8)	4 (101.6)	1/2 (12.7)	30,000 (133)
YP-5908	1-1/4 (31.8)	15/16 (23.8)	1 (25.4)	13/16 (20.6)	18 (457.2)	6-1/4 (158.8)	5/8 (15.9)	40,000 (178)
YP-5909	1-1/4 (31.8)	15/16 (23.8)	1 (25.4)	13/16 (20.6)	22 (558.8)	7-1/4 (184.2)	5/8 (15.9)	40,000 (178)
YP-5910	1-1/4 (31.8)	15/16 (23.8)	1 (25.4)	13/16 (20.6)	26 (660.4)	8-1/2 (215.9)	3/4 (19.0)	50,000 (222)
YP-5911	1-1/4 (31.8)	15/16 (23.8)	1 (25.4)	13/16 (20.6)	29 (736.6)	9-1/2 (241.3)	3/4 (19.0)	50,000 (222)
YP-5912	1-1/4 (31.8)	15/16 (23.8)	1 (25.4)	13/16 (20.6)	32 (812.8)	10-1/2 (266.7)	3/4 (19.0)	50,000 (222)
YP-5913	1-1/4 (31.8)	15/16 (23.8)	1 (25.4)	13/16 (20.6)	37 (939.8)	11-3/4 (298.45)	3/4 (19.0)	50,000 (222)
YP-5934	1-1/4 (31.8)	5 (127)	1 (25.4)	7-27/32 (199.2)	42 (1066.8)	13 (330.2)	15/16 (23.8)	50,000 (222)