

## THIMBLE CLEVIS

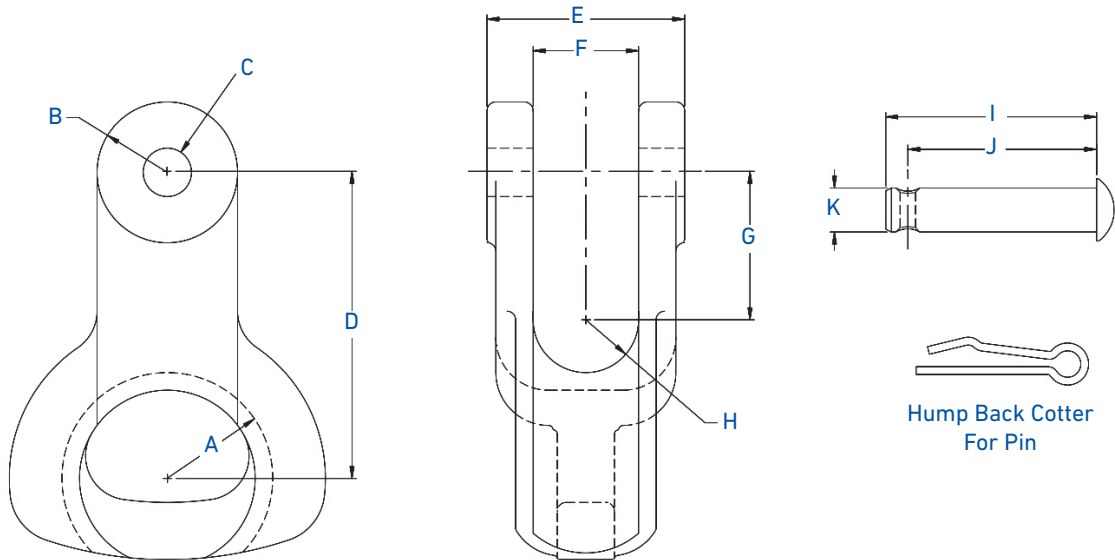
The **Thimble Clevis** is designed for use in conjunction with PLP Dead-Ends for cable termination purposes. The thimble provides a smooth internal contour to prevent stress concentration within the loop of a PLP Dead-End. The Clevis includes a steel pin which links the clevis through the eye of the insulator or other mounting point and the pin is secured with a humpbacked cotter key.

Refer to the individual dead-end sections for the appropriate application recommendations.

### FEATURES AND BENEFITS

- Provides a smooth contoured seating surface for the dead-end
- Prevents stress concentration within the loop of the formed wire dead-end
- Permits insulator replacement without removal of the dead-end

## SPECIFICATIONS



Dimensions											
Catalog Number	A	B	C Diameter	D	E	F	G	H	I	J	K
in											
TC-5A	1-1/8	1-1/4	11/16	3	1-3/4	15/16	1-13/32	1/2	2-15/16	2-3/16	5/8
ATC-20M	1-1/2	1		4-11/32	2-13/16	1-1/2	2-3/32	3/4	3-3/8	3-1/16	
TC-5F	1-1/8	1-1/4		3	1-5/8	15/16	1-13/32	1/2	2-15/16	2-3/16	
TC-17	13/16	3/4		2-5/16	1-3/8	3/4	1-1/8	3/8	1-7/8	1-5/8	
TC-6F	1-1/4	1-1/2		3-1/2	2-1/16	1-1/16	1-23/32	17/32	2-3/4	2-7/16	3/4

## ORDERING INFORMATION

### Thimble Clevis

Catalog Number	Weight per Unit	Carton Weight	Units per Carton	RHS	Material
	lb				
TC-5A	0.75	43	50	12,000	Aluminum
ATC-20M	1.80	38	20	20,000	
TC-5F	1.60	50	25	26,900	Iron
TC-17	1.00	23	20	15,000	
TC-6F	2.40	62	20	42,400	