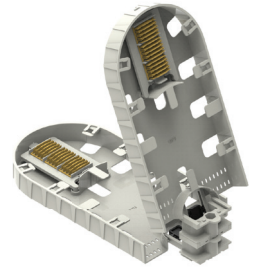




## COYOTE® LONG FLIP TRAYS FOR HIGH-DENSITY SPLICE APPLICATIONS

### INSTALLATION INSTRUCTIONS



#### IMPORTANT SAFETY INFORMATION

**READ AND COMPLETELY UNDERSTAND ALL INSTRUCTIONS BEFORE INSTALLING PRODUCT. FAILURE TO FOLLOW THESE INSTRUCTIONS MAY RESULT IN PERSONAL INJURY OR DEATH.**

This product is intended for use by trained technicians only. This product should not be used by anyone who is not familiar with and not trained to use it. When working in the area of energized lines, extra care should be taken to prevent accidental electrical contact. Be sure to wear proper safety equipment per your company protocol. These instructions are not intended to supersede any company construction or safety standards. These instructions are offered only to illustrate safe installation for the individual. PLP products are intended for the specified application only. Do not modify this product under any circumstances. Do not reuse or reinstall any PLP product unless that capability is expressly indicated in the product's Installation Instructions. For proper performance and personal safety, be sure to select the proper PLP product before installation. PLP products are precision devices. To ensure proper performance, they should be stored in cartons under cover and handled carefully.

#### PACKAGE COMPONENTS



#### Catalog Number: 80814405

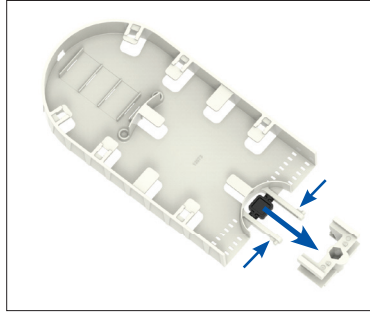
1. Long Thin Profile Flip Tray (1)
2. Cover (1)
3. Felt Strip (1)
4. Bag of Tie Wraps (1)
5. Thin Profile Hinge Bracket (1)
6. Single Fusion Splice Blocks (6)
7. Mass Fusion Splice Blocks (3)



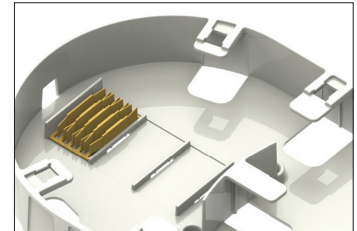
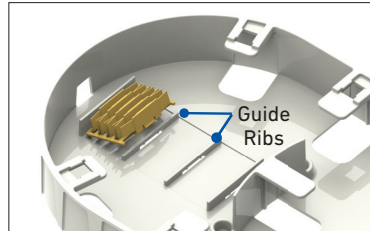
#### Catalog Number: 80814406

1. Long Deep Profile Flip Tray (1)
2. Cover (1)
3. Felt Strip (1)
4. Bag of Tie Wraps (1)
5. Short Splice Block Platform (1)
6. Deep Profile Hinge Bracket (1)
7. Mass Fusion Splice Blocks (6)
8. Single Fusion Splice Blocks (6)

- 1 Install the flip tray into the hinge bracket by pushing in the legs of the tray together and pushing the tray into the hinge bracket.

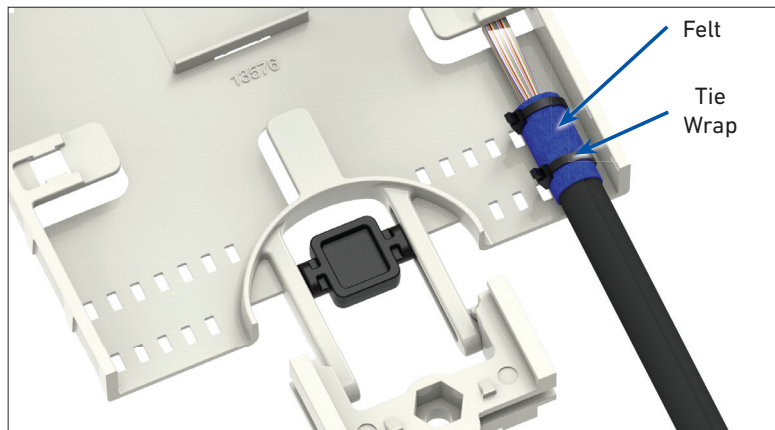


- 2 Insert the plastic splice blocks between the guide ribs and confirm that the tabs of each splice block are captured within the slots of the guide ribs.



## SECURING THE TUBING OR BUFFER TUBES TO THE FLIP TRAY

- 3 Wrap the ends of the tubing or buffer tubes with a piece of felt. Secure the tubing or buffer tubes to the flip tray(s) with tie wraps.

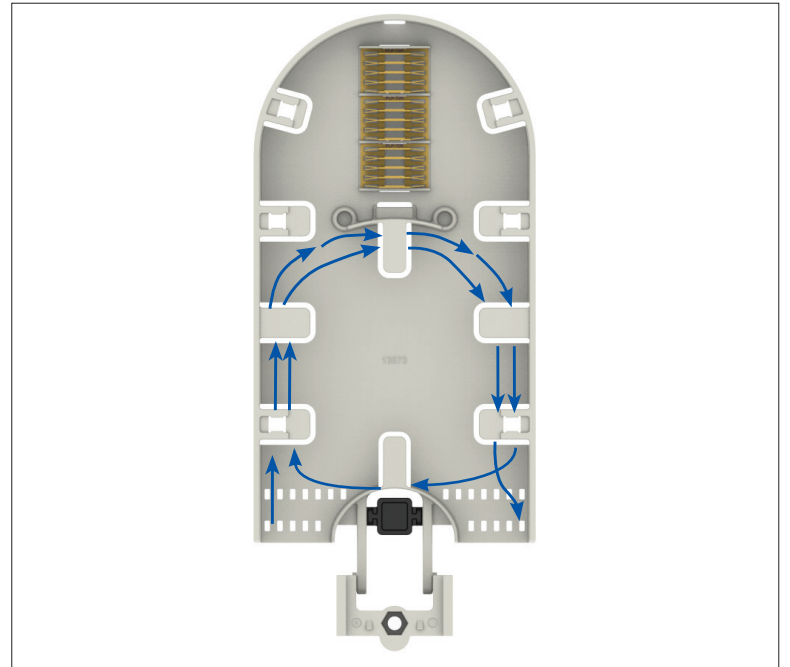


## SPLICE TRAY MANAGEMENT FOR DEEP PROFILE RIBBON FLIP TRAYS

288 CT

4

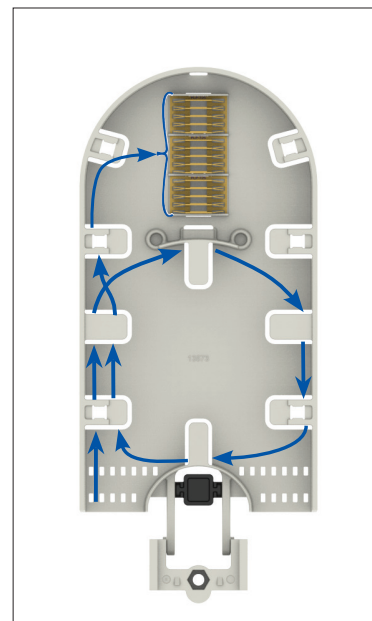
Route the expressed fibers in the splice tray as shown.



5

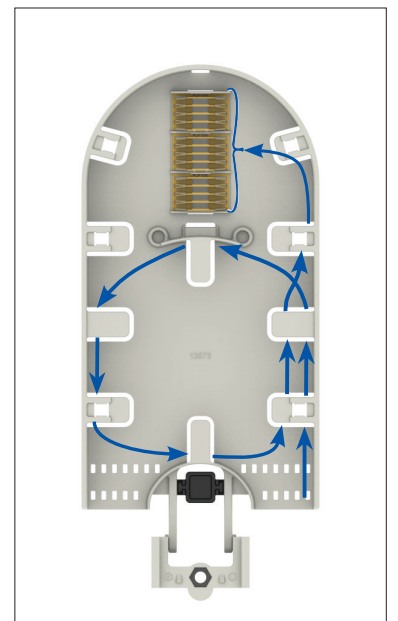
Route the first 12 incoming and outgoing ribbons in each splice tray as shown.

Routing for  
Incoming Ribbons



Splices  
1-12

Routing for  
Outgoing Ribbons

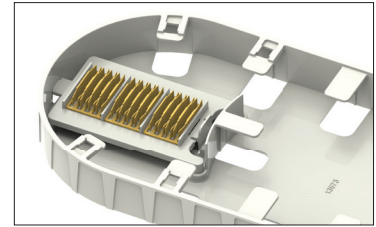
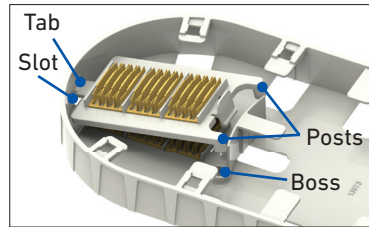


Splices  
1-12

6

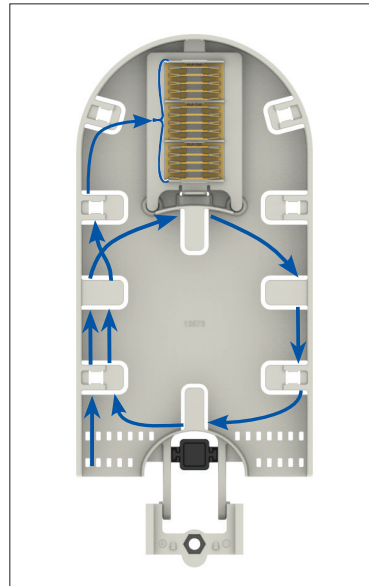
Splice the first 12 incoming ribbons to the first 12 outgoing ribbons per your accepted company practices.

- 7 Install the platform into the splice tray by inserting the tab of the platform into the slot of the splice tray and then pushing the posts of the platform into the bosses of the splice tray.



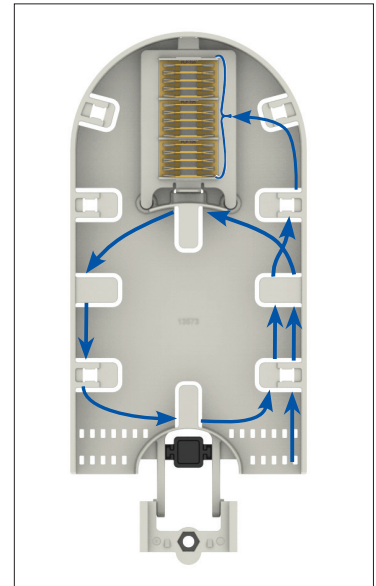
- 8 Route the last 12 incoming and outgoing ribbons in each splice tray as shown.

Routing for  
Incoming Ribbons



Splices  
13-24

Routing for  
Outgoing Ribbons



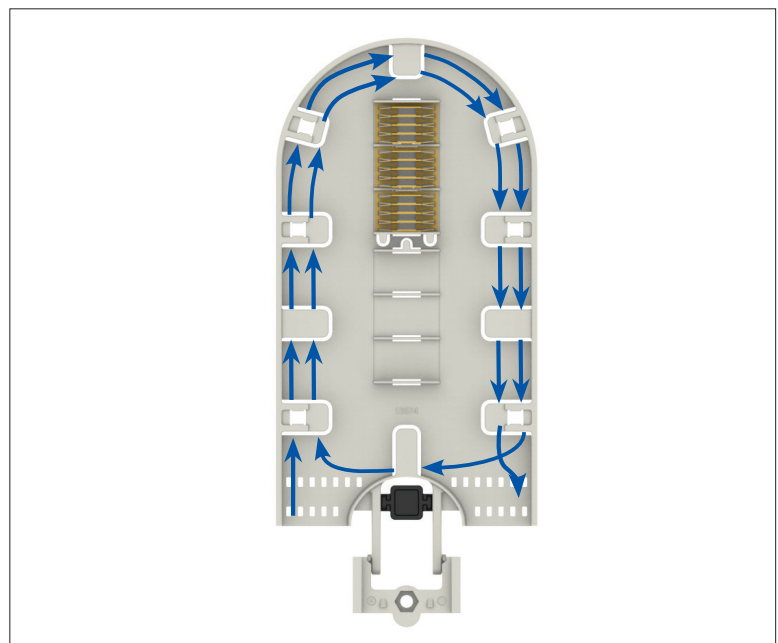
Splices  
13-24

- 9 Splice the last 12 incoming ribbons to the last 12 outgoing ribbons per your accepted company practices.

## SPLICE TRAY MANAGEMENT FOR THIN PROFILE RIBBON FLIP TRAYS

144 CT

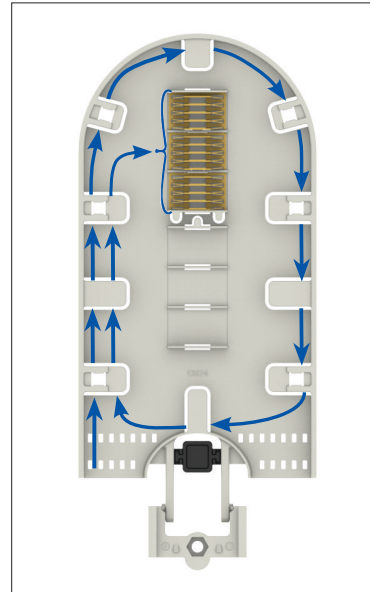
- 10 Route the expressed fibers in the splice tray as shown.



11

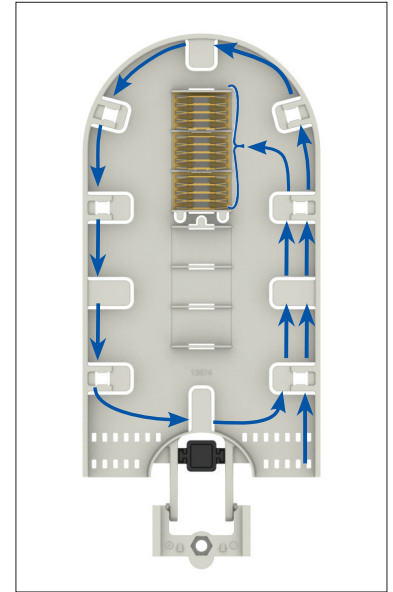
Route the incoming and outgoing ribbons in each splice tray as shown.

Routing for  
Incoming Ribbons



Splices  
1-12

Routing for  
Outgoing Ribbons



Splices  
1-12

12

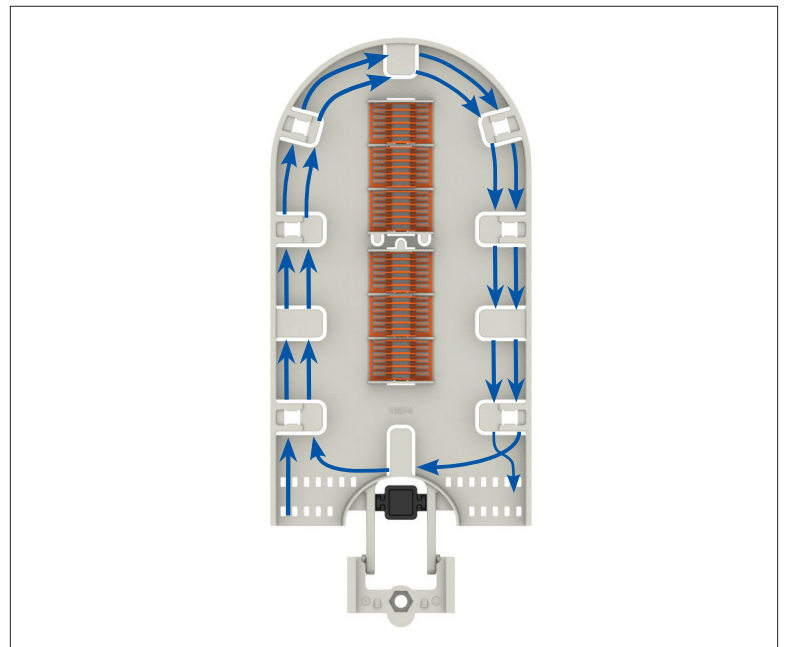
Splice the incoming ribbons to the outgoing ribbons per your accepted company practices.

## SPLICE TRAY MANAGEMENT FOR THIN PROFILE SINGLE FUSION FLIP TRAYS

72 CT

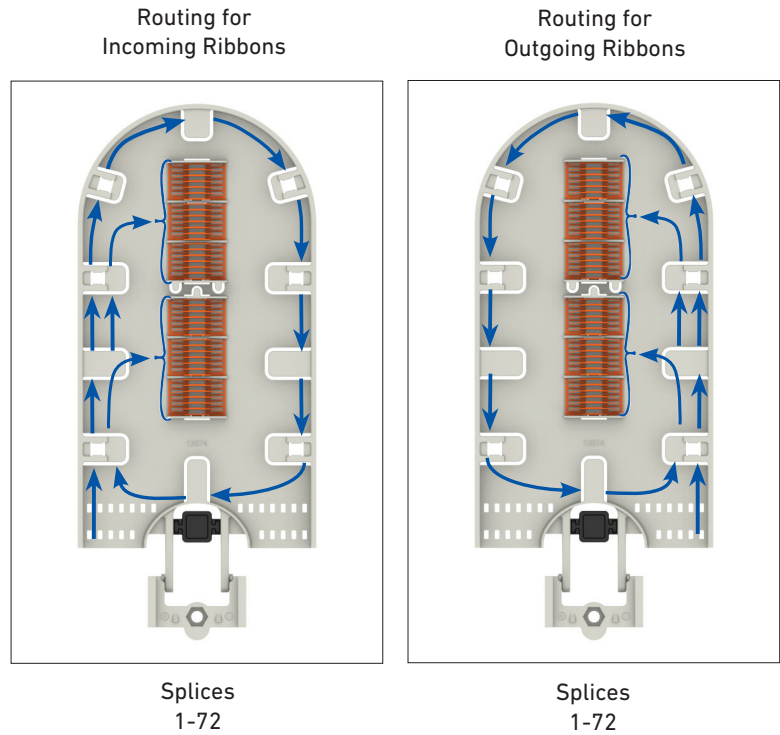
13

Rotate the expressed fibers in the splice tray as shown.



14

Route the incoming and outgoing ribbons in each splice tray as shown.

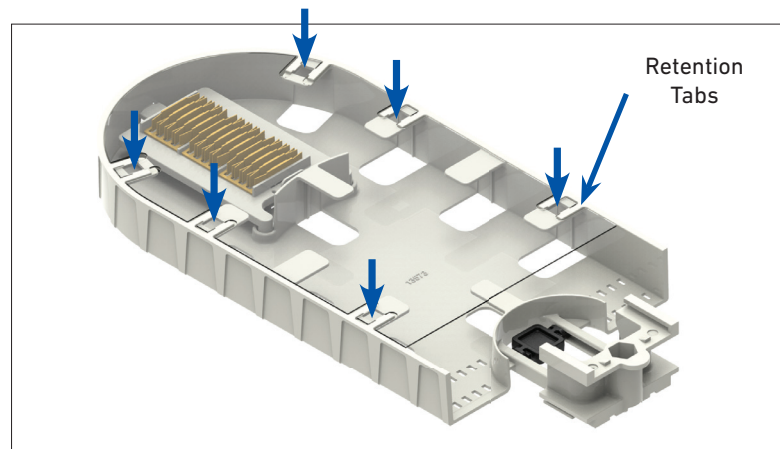


15

Splice the incoming fibers to the outgoing fibers per your accepted company practices.

16

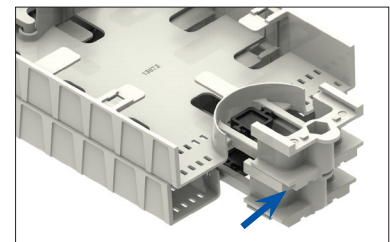
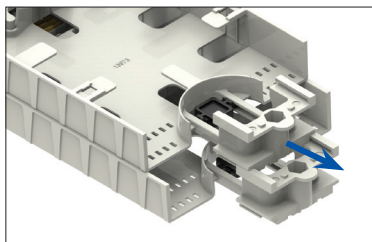
Secure the flip tray cover to the tray by firmly pressing the cover into the retention tabs.



## ADDITIONAL FLIP TRAYS INSTALLATION

17

Slide the hinge bracket of the flip tray into the slots of the hinge bracket of the previous flip tray until it is fully engaged.

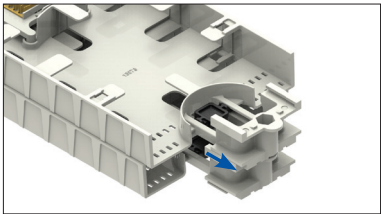
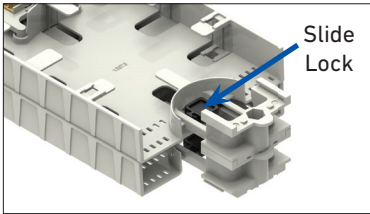


**NOTE:** The hinge bracket is fully engaged if it can slide past the hinge bracket below it.

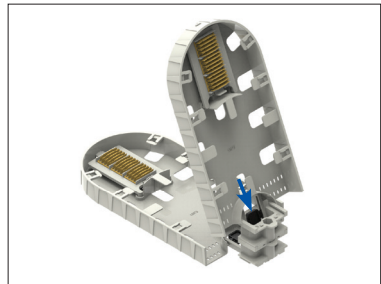
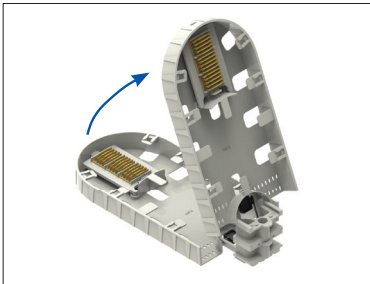


## FLIPPING AND SECURING TRAYS

- 18** Shift the slide lock against the flip tray. While holding the slide lock against the tray, push the hinge bracket backwards.



- 19** Rotate the flip tray upwards until it is in the set position in the hinge bracket. Lock the tray in the upright position by sliding the slide lock towards the hinge bracket.



**NOTE:** The slide lock must be in the locked position for each tray that is in the upward position. DO NOT LOCK the slide lock for only the bottom flip tray of the stack of trays that are in the upward position.

## APPENDIX A

### COYOTE® Long Flip Tray Capacity Chart

PLP Catalog Number	Description	Image	Closure	Max Trays per Closure	Closure Max Splice Capacity
80814405 <sup>1</sup>	Long Thin Profile Flip Tray (72 CT. SF/144 CT. MF)		COYOTE 6.5" x 22" Dome	4	288 SF / 576 MF
			COYOTE 8" Pedestal		
80814406	Long Deep Profile Flip Tray (72 CT. SF/ 288 CT. MF)		COYOTE 6.5" x 22" Dome	2	144 SF / 576 MF
			COYOTE 8" Pedestal		

<sup>1</sup>The 80814405 thin-profile flip tray can only be used for cables that contain SpiderWeb Ribbon (SWR) – AFL, Rollable Ribbon (RR) – OFS, Pliable Ribbon – Sumitomo, or FlexRibbon™ – Prysmian.

SWR® is a registered trademark of AFL. FlexRibbon™ is a registered trademark of Prysmian.



---

**GLOBAL HEADQUARTERS**  
660 BETA DRIVE  
CLEVELAND, OH 44143

+1 440 461 5200  
INFO@PLP.COM  
PLP.COM