

FIBERLIGN® MULTI-DROP BRACKET SIDE MOUNT

The **FIBERLIGN Multi-Drop Bracket – Side Mount** is designed to reduce attachment costs at the pole by effectively minimizing the pole space and hardware required to attach multiple cables at the pole. This bracket allows multiple FIBERLIGN Extended Span and ADSS Drop cable dead-ends to be supported off each side that are tangent to the pole, allowing for better transitioning of drop cable turning angles and distribution from the pole to the premise. A single bolt or band is used to attach the bracket to the pole or structure to save on additional pole attachment fees.





FEATURES AND BENEFITS

- Reduces the pole space and hardware required to connect multiple drop cable spans to the pole or structure
- Utilized for re-direction of drop cables at the pole
- Utilized for short or long span installations of multiple drop cables
- Compatible with formed wire dead-ends and drop clamps (p-clamps)
- Attaches to the pole or structure with a 5/8" through bolt, 5/8" double arming bolt, or 1-1/4" wide banding.
- Made of ductile iron that is galvanized per ASTM A-153

SPECIFICATIONS

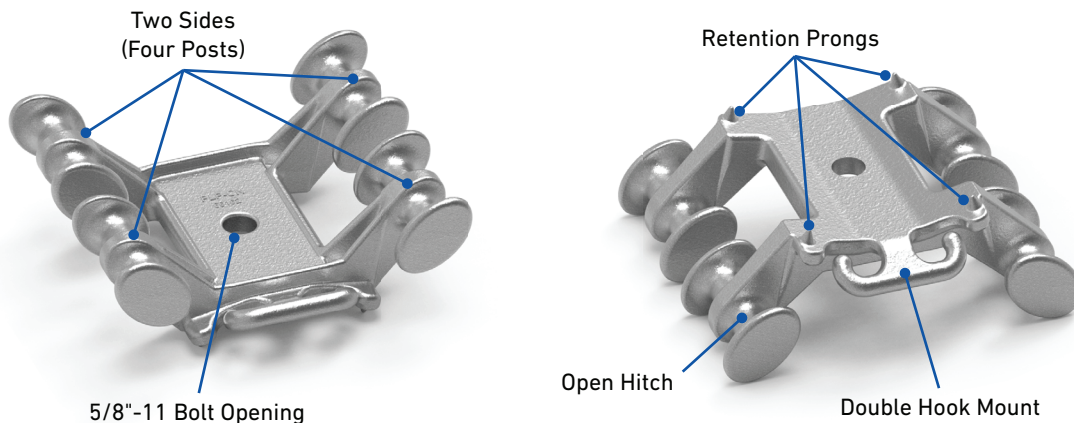
Characteristic	Specification
Maximum Allowable Load at each Spool	1,200 lb
Total Maximum Tension Load (8 Cable Spans)	9,600 lb
Maximum Vertical Load	2,000 lb

COMPATIBLE DEAD-END CAPACITY

Dead-End Type	Application for Dead-End Type	Maximum Quantity per Bracket	
Drop Clamps (P-Clamps)	2 per Open Spool 2 per Side of Double Hook Mount	Up to 20 Total	
FIBERLIGN® ADSS Drop Cable Dead-Ends with Open Thimbles*	1 per Open Spool	Up to 8 Total (4 per side)	
FIBERLIGN® Lite Tension Dead-Ends with Open Thimbles*	1 per Open Spool	Up to 8 Total (4 per side)	
FIBERLIGN® Extended Span Dead-Ends	1 per Open Spool	Up to 8 Total (4 per side)	

*Open Thimble (Catalog Number: 00066114) must be used when pairing with the Multi-Drop Bracket and ordered separately from the dead end.

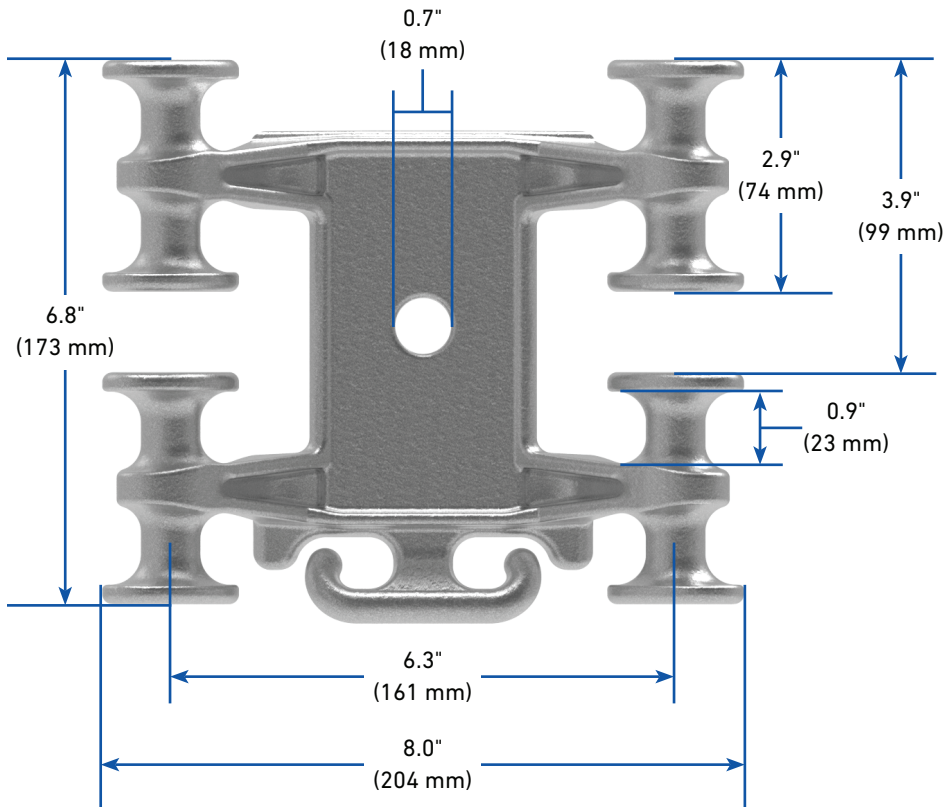
COMPONENTS



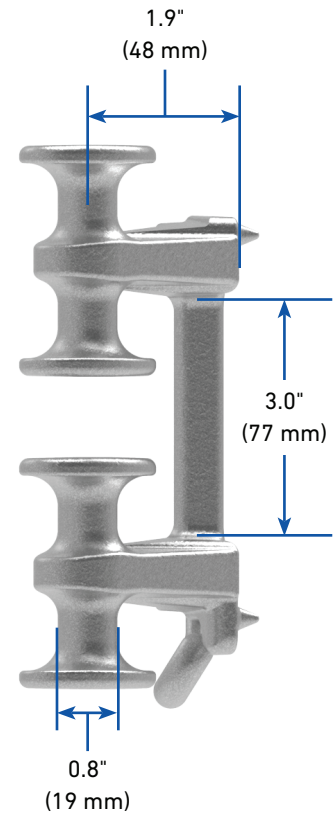


DIMENSIONS

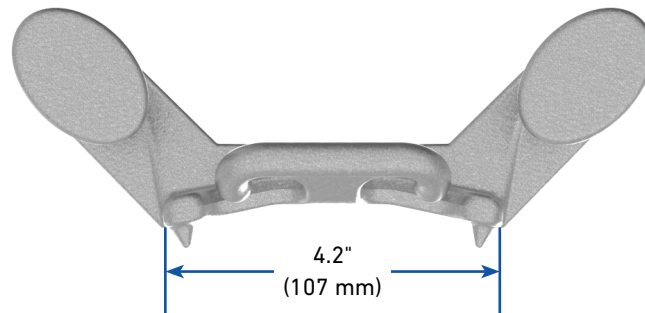
Front View



Side View



Bottom View



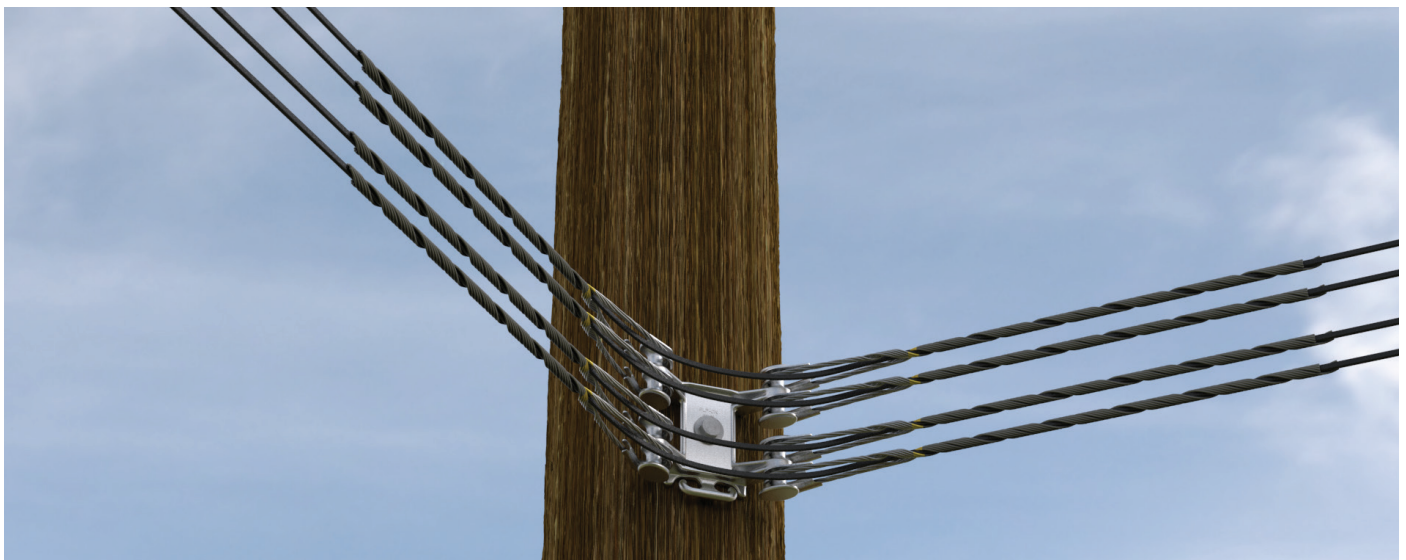
ORDERING INSTRUCTIONS

- Select the catalog number from the table below when attaching multiple drop cable spans to a pole or structure with drop clamps (p-clamps), formed wire dead-ends with a 3/4" (19 mm) cable loop diameter, or formed wire dead-ends with an appropriate open style thimble.

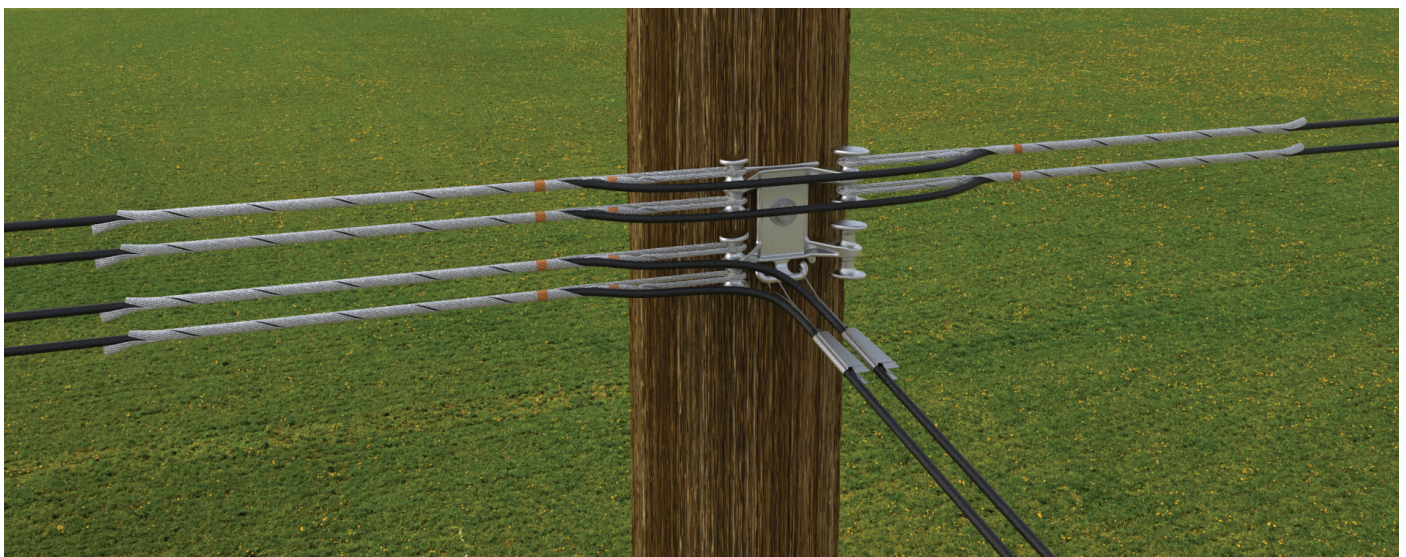
Side Mount Multi-Drop Bracket

Catalog Number	Description
MDB208*	Side Mount Multi-Drop Bracket

*Lite Tension and Drop Cable Dead-Ends require the use of an Open Thimble (**Catalog Number: 00066114**) which must be ordered separately.



Side Mount Multi-Drop Bracket with (4) FIBERLIGN® ADSS Drop Cable Dead-Ends with Open Thimble



Side Mount Multi-Drop Bracket with (6) FIBERLIGN® Extended Span Dead-Ends and (2) P-Clamps