



COYOTE® DOME ORGANIZER CONSOLIDATION CHART

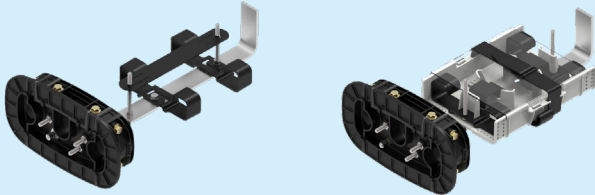
Before, you had to
choose between these...

COYOTE® ONE Dome Closure

Catalog Number:

COY1-001 - ONE for Buffer Tube

COY1-002 - ONE for Unitube/
Ribbon



Closure Information

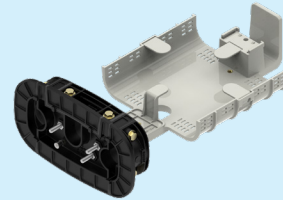
Tray Part Numbers	80809958 - 24 ct. single fusion tray (x4) 80813152 - 36 ct. single fusion tray (x4) 80808945 - 40 ct. single fusion tray (x2) LGSTR144 - 144 ct. mass fusion tray (x2)
Splice Capacity	144 single fusion or 288 mass fusion splices

...now, both applications
can be done in

COYOTE® ONE Dome Closure

Catalog Number:

COY1U-000 - ONE with Universal Organizer



Closure Information

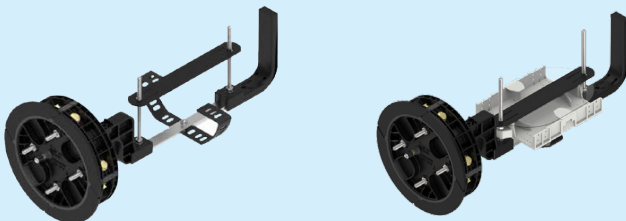
Tray Part Numbers	80809958 - 24 ct. single fusion tray (x4) 80813152 - 36 ct. single fusion tray (x4) 80808945 - 40 ct. single fusion tray (x2) LGSTR144 - 144 ct. mass fusion tray (x2) 80814404 - 36 ct. single fusion flip tray (x1) or 144 ct. mass fusion flip tray (x1) 80814403 - 36 ct. single fusion flip tray (x2) or 144 ct. mass fusion flip tray (x2)
Splice Capacity	144 single fusion or 288 mass fusion splices

COYOTE® 6.5" x 17" Dome Closure

Catalog Number:

8006944 - Dome for Buffer Tube

8006945 - Dome for Ribbon



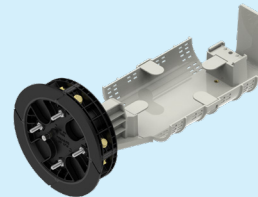
Closure Information

Tray Part Numbers	80809958 - 24 ct. single fusion tray (x6) 80813152 - 36 ct. single fusion tray (x6) 80808945 - 40 ct. single fusion tray (x2) LGSTR144 - 144 ct. mass fusion tray (x3)
Splice Capacity	216 single fusion or 432 mass fusion splices

COYOTE® 6.5" x 17" Dome Closure

Catalog Number:

COYD617U-000 - Dome with Universal Organizer



Closure Information

Tray Part Numbers	80809958 - 24 ct. single fusion tray (x6) 80813152 - 36 ct. single fusion tray (x6) 8080945 - 40 ct. single fusion tray (x3) LGSTR144 - 144 ct. mass fusion tray (x3) 80814404 - 36 ct. single fusion tray (x2) or 144 ct. mass fusion flip tray (x2) 80814403 - 36 ct. single fusion flip tray (x4) or 144 ct. mass fusion flip tray (x4)
Splice Capacity	216 single fusion or 432 mass fusion splices

COYOTE® DOME ORGANIZER CONSOLIDATION CHART

Before, you had to
choose between these...

COYOTE® 6.5" x 22" Dome Closure

Catalog Number:

8006877 - Dome for Buffer Tube

8006878 - Dome for Ribbon



Closure Information

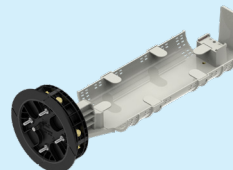
Tray Part Numbers	80810086 - 36 ct. single fusion tray (x4) LGSTS72 - 72 ct. single fusion tray (x3) LGSTR216 - 216 ct. mass fusion tray (x3)
Splice Capacity	216 single fusion or 648 mass fusion splices

...now, both applications
can be done in

COYOTE® 6.5" x 22" Dome Closure

Catalog Number:

COYD622U-000 - Dome with Universal Organizer



Closure Information

Tray Part Numbers	80810086 - 36 ct. single fusion tray (x4) LGSTS72 - 72 ct. single fusion tray (x3) LGSTR216 - 216 ct. mass fusion tray (x3) 80814406 - 72 ct. single fusion flip tray (x2) or 288 ct. mass fusion flip tray (x2) 80814405 - 72 ct. single fusion flip tray (x4) or 144 ct. mass fusion flip tray (x4)
Splice Capacity	288 single fusion or 648 mass fusion splices

COYOTE® 9.5" x 19" Dome Closure

Catalog Number:

COYD919B-000 - Dome for Buffer Tube

COYD919R-000 - Dome
for Ribbon



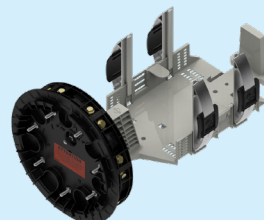
Closure Information

Tray Part Numbers	80809958 - 24 ct. single fusion tray (x12) 80813152 - 36 ct. single fusion tray (x12) 80808945 - 40 ct. single fusion tray (x6) LGSTR144 - 144 ct. mass fusion tray (x6)
Splice Capacity	432 single fusion or 864 mass fusion splices

COYOTE® 9.5" x 19" Dome Closure

Catalog Number:

COYD919U-000 - Dome with Universal Organizer



Closure Information

Tray Part Numbers	80809958 - 24 ct. single fusion tray (x12) 80813152 - 36 ct. single fusion tray (x12) 8080945 - 40 ct. single fusion tray (x6) LGSTR144 - 144 ct. mass fusion tray (x6) 80814404 - 36 ct. single fusion tray (x4) or 144 ct. mass fusion flip tray (x4) 80814403 - 36 ct. single fusion flip tray (x8) or 144 ct. mass fusion flip tray (x8)
Splice Capacity	432 single fusion or 864 mass fusion splices

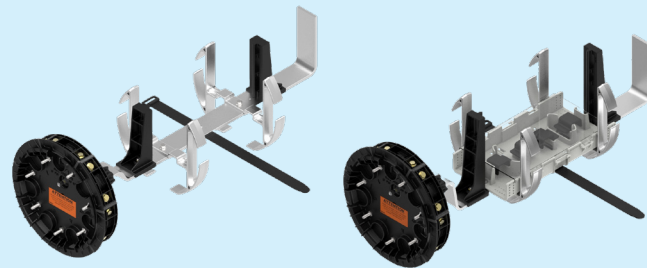
COYOTE® DOME ORGANIZER CONSOLIDATION CHART

Before, you had to
choose between these...

...now, both applications
can be done in

COYOTE® 9.5" x 28" Dome Closure

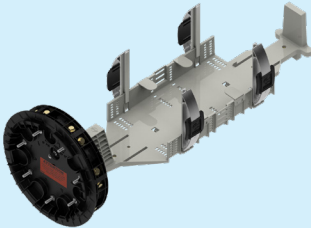
Catalog Number:
80061055 - Dome for Buffer Tube 80061056 - Dome for Ribbon



Closure Information	
Tray Part Numbers	80810086 - 36 ct. single fusion tray (x11) LGSTS72 - 72 ct. single fusion tray (x8) LGSTR216 - 216 ct. mass fusion tray (x8)
Splice Capacity	576 single fusion or 1728 mass fusion splices

COYOTE® 9.5" x 28" Dome Closure

Catalog Number:
COYD928U-000 - Dome with Universal Organizer



Closure Information	
Tray Part Numbers	80810086 - 36 ct. single fusion tray (x10) LGSTS72 - 72 ct. single fusion tray (x7) LGSTR216 - 216 ct. mass fusion tray (x7) 80813123 - 72 ct. single fusion flip tray (x8) 80813301 - 108 ct. single fusion flip tray (x8) 80813121 - 288 ct. mass fusion flip tray (x8) 80813122 - 288 ct. mass fusion flip tray (x4) 80813779 - 576 ct. mass fusion flip tray (x4)
Splice Capacity	864 single fusion or 2304 mass fusion splices

Flame retardant versions also updated to use universal organizer. Contact PLP for part numbers.
At time of publication, old organizer types still available for purchase.

