



FIBERLIGN[®] ADSS DROP CABLE DEAD-END

Classified as a formed wire design, the **FIBERLIGN ADSS Drop Cable Dead-End** is able to secure the soft, pliable surface of a drop cable without causing attenuation. Unlike wedge-type dead-ends, the formed wire dead-end effectively transfers the axial load on the cable at the end of the dead-end legs to a low uniform radial compression near the loop. This transition of force is distributed over the length of the product, providing a secure hold with minimal pressure on the cable or messenger.

FEATURES AND BENEFITS

- Applies directly to the pliable surface of the drop cable without damaging the cable jacket or causing fiber attenuation that wedge-style clamps can cause
- Manufactured from corrosion-resistant aluminum alloy that is latex coated to provide a compatible interface with the polyethylene jacket of the drop cable
- Uses a common design for both round-profile and flat drop cables that can reduce inventory and training needs
- Multi-wire loop section provides more strength than the single wire bail of wedge clamps
- Dead-end loop will fit a minimum diameter of 1" (25.4 mm) and a maximum of 1-5/8" (41.3 mm)
- Designed to fit over standard pole line hardware fittings
- Can be applied on hooks and other fitting types (with a small interface diameter less than 1") with the addition of an optional thimble

SPECIFICATIONS

Due to the variety of cable designs from various manufacturers, the holding capabilities of **FIBERLIGN ADSS Drop Cable Dead-End** will vary. The cable specifications shown below provide the typical requirements for a drop cable application.

CAUTION: Contact the cable manufacturer for specific capabilities to determine the proper sag and tension levels for your system.

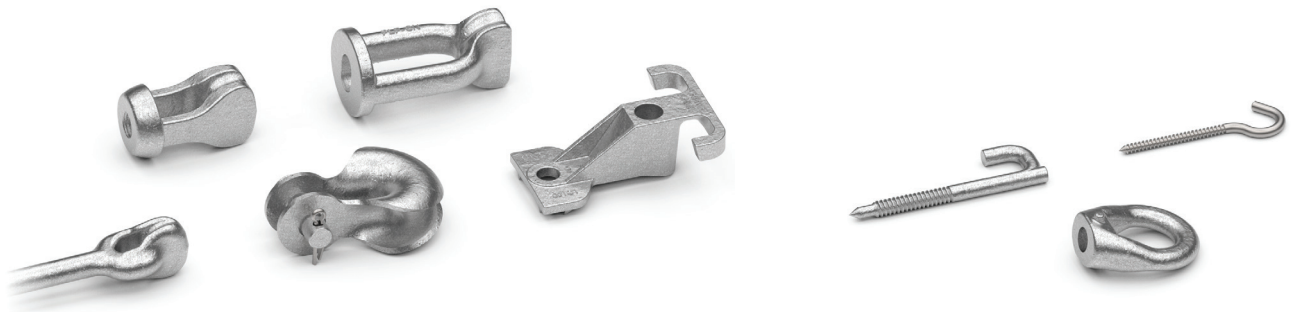
FIBERLIGN ADSS Drop Cable Dead-End¹

Maximum Span Length				Installation Load Range		Loaded Tension Range	
Distribution		Service Drop					
ft	m	ft	m	lb	N	lb	N
300	91	200	61	70-100	311 – 444	250 – 500	890 – 2,220

¹Specifications listed are approximate and can vary by application.

ATTACHMENT FITTINGS

The loop of the FIBERLIGN® ADSS Drop Cable Dead-End will fit over a minimum diameter of 1" (25.4 mm) and a maximum diameter of 1-5/8" (41.3 mm). Thimbles can be used for fittings that may cause high stress in the loop of the dead-end.



Optimal Fittings – No Thimble Required

Fittings Requiring Thimble

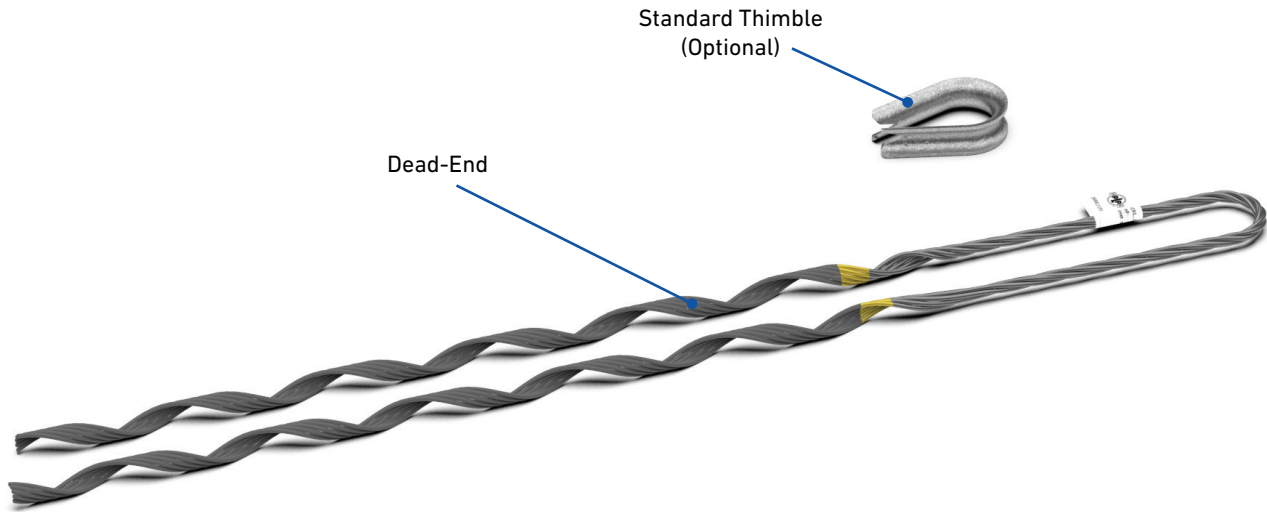
The **FIBERLIGN ADSS Midspan Drop** allows ADSS drop cables to be redirected anywhere along the backbone cable. It provides the proper loop support for FIBERLIGN ADSS Drop Cable Dead-Ends and has the ability to support up to two drop cables.



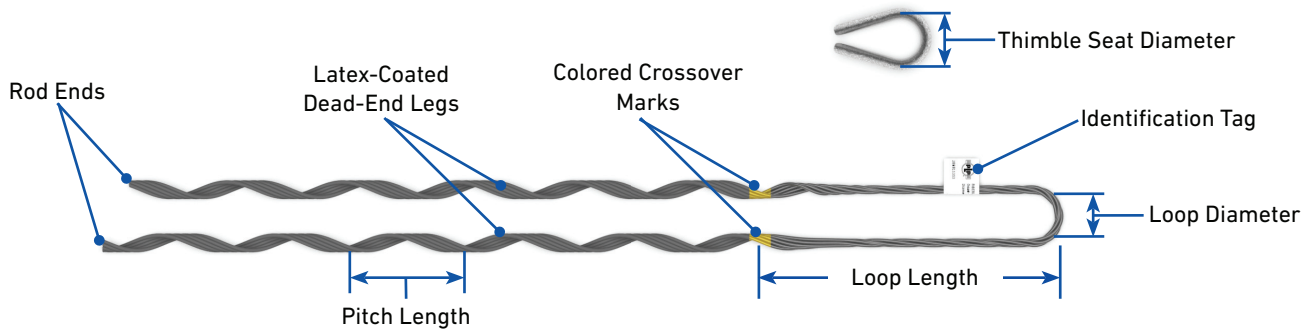
FIBERLIGN ADSS Midspan Drop



COMPONENTS



Component	Description
Identification Tag	Tag includes product description and application information
Colored Crossover Mark	Indicates where dead-end contact should begin and identifies the cable diameter range
Dead-End Legs	Wrap onto the cable beginning at the crossover mark
Latex Coating	Pliable coating applied over the dead-end legs
Rod Ends	Special rod end treatment to prevent cable sheath damage
Loop Diameter	Formed diameter designed to interface with standard fittings
Loop Length	Length from the color mark to the end of the loop
Pitch Length	Distance along the leg that represents one complete wrap around the circumference of the cable (360 degrees)
Thimble Seat Diameter	Formed diameter designed to fit the dead-end loop



ORDERING INFORMATION

Select the appropriate **FIBERLIGN® ADSS Drop Cable Dead-End** based on the diameter of the cable for round-profile cables.

- Contact PLP to verify the appropriate dead-end selection when using flat drop cables.

FIBERLIGN ADSS Drop Cable Dead-End

Round-Profile Drop Cables

Catalog Number		Cable Diameter Range ²		Color Code	Length		Per Carton	
without Thimble	with Thimble ¹	in	mm		in	m	Units	Wt/lb ³
288811343	288811343T	0.231 – 0.240	5.9 – 6.1	Brown	19	0.48	100	11
288811285	288811285T	0.251 – 0.260	6.4 – 6.6	Red	18	0.46	100	10
288811337	288811337T	0.301 – 0.310	7.6 – 7.9	Red	22	0.56	100	20
288811350	288811350T	0.321 – 0.330	8.2 – 8.4	Black	23	0.58	100	20
288811352	288811352T	0.341 – 0.350	8.7 – 8.9	Red	22	0.56	100	18
288811274	288811274T	0.351 – 0.360	8.9 – 9.1	Black	24	0.61	100	21
288811269	288811269T	0.361 – 0.370	9.2 – 9.4	Black	22	0.56	100	18
288811353	288811353T	0.371 – 0.380	9.4 – 9.6	Yellow	27	0.69	100	27

¹ Kit includes a 1/2" Standard Thimble (Catalog Number: 00065474). The Standard Thimble weighs 0.12 lb

² Contact PLP for cable applications not shown

³ This weight is for Drop Cable Dead-Ends without Thimbles. Carton weight increases approximately 12 lb for Drop Cable Dead-Ends with Thimbles.

Flat Drop Cables

Catalog Number		Flat Cable Information ²			Color Code	Length		Per Carton	
without Thimble	with Thimble ¹	L x W ³		Manufacturer		in	m	Units	Wt/lb ⁴
		in	mm						
288811353	288811353T	0.320 x 0.180	8.1 x 4.5	Corning	Yellow	27	0.69	100	27
		0.310 x 0.170	7.8 x 4.3	OFS					
		0.330 x 0.170	8.3 x 4.3	Prysmian					

¹ Includes a 1/2" Standard Thimble (Catalog Number: 00065474). The Standard Thimble weighs 0.12 lb

² Contact PLP for cable applications not shown

³ Length x Width of the Flat Drop Cable cross-section

⁴ This weight is for Drop Cable Dead-Ends without Thimbles. Carton weight increases approximately 12 lb for Drop Cable Dead-Ends with Thimbles.

**Standard Thimble for
FIBERLIGN Drop Cable Dead-Ends**



1/2" Galvanized Steel Standard Thimble
(Catalog Number: 00065474)

**Open Thimble for
FIBERLIGN Drop Cable Dead-Ends**



1/2" Galvanized Steel Open Thimble
(Catalog Number: 00066114)