

COYOTE® PEDESTALS

COYOTE Pedestals provide easy customization options to adapt to your fiber or copper splicing needs at each location in your network. Each pedestal is pre-assembled and can be configured to accept fiber optic splice trays, fiber or copper terminals, fiber cross-connect bulkheads, or management brackets for copper splices. In addition, the organizer can be removed and a slotted metal back plane or metal frame can be inserted into the base to attach fiber closures and cabinets to provide additional protection for your splices. The versatility that COYOTE Pedestals provide allows you to create the network you desire.

FEATURES AND BENEFITS

- Each pedestal size is pre-assembled with a base, automatic locking cover, and internal organizer with a grounding busbar
- Cover and base are manufactured out of a UV/FR stabilized material designed to withstand weathering
- Split base design enables easy installation around pre-installed duct/cables and simplifies replacement of existing pedestals
- Patented automatic cover locking system provides secure access without the need for additional hardware
- Grounding busbar isolates connections and is equipped with a ground wire terminal (#4 – #10)
- Supports a wide range of fiber and copper applications, including splicing, terminals, hardened connectivity, and cross-connects
- Organizer can accommodate COYOTE Flip Trays, LITE-GRIP® Splice Trays, or Legacy Splice Trays for maximum flexibility
- All fasteners are constructed of stainless steel to prohibit corrosion and can be secured or loosened with common tools (216 can wrench, 1/4" nut driver, or Philips screwdriver)
- Designed and tested in accordance with GR-13-CORE requirements

COYOTE® 6" PEDESTAL ORGANIZER ASSEMBLIES

With Universal Organizer

- Can be configured with COYOTE® Flip Trays
- Internal Cross-Connect or Hardened Connectivity Features for all splice tray configurations
- Ability to place hardened terminals; up to 4-Port Corning Evolv® Terminals
- Can place routing handles to properly store/waterfall copper splices

With Metal Back Plane

- Accommodates most copper and fiber terminals
- Allows for ample space concerning fiber bend radius of MST/ Hardened Drops
- Can accommodate other distribution splice enclosures



COYOTE® 6" Pedestal,
Universal Organizer w/
Busbar and Split Base



COYOTE® 6" Pedestal,
Metal Back Plane and
Split Base

COYOTE® 6" Pedestal Kits

Catalog Number	Description
COYPED6-UOS	COYOTE® 6" Pedestal, Universal Organizer with Anchor Stake – Includes (1) 6" Pedestal, Universal Organizer with Busbar and Split Base, (1) Dome, (1) Small Parts Bag, (1) Cable Retention Kit, and (1) 32" Anchor Stake with Attachment Hardware
COYPED6-UON	COYOTE® 6" Pedestal, Universal Organizer without Anchor Stake – Includes (1) 6" Pedestal, Universal Organizer with Busbar and Split Base, (1) Dome, (1) Small Parts Bag, and (1) Cable Retention Kit
COYPED6-MBPS	COYOTE® 6" Pedestal, Metal Back Plane with Anchor Stake – Includes (1) 6" Pedestal, Metal Back Plane and Split Base, (1) Dome, and (1) 32" Anchor Stake with Attachment Hardware
COYPED6-MBPN	COYOTE® 6" Pedestal, Metal Back Plane without Anchor Stake – Includes (1) 6" Pedestal, Metal Back Plane and Split Base, and (1) Dome

All kits include (1) COYOTE 6" Pedestal with Organizer, (1) Dome, and (1) Split Base. Anchor Stakes, Accessory Kits and Splice Trays Sold Separately.



COYOTE® 8" PEDESTAL ORGANIZER ASSEMBLIES

With Universal Organizer

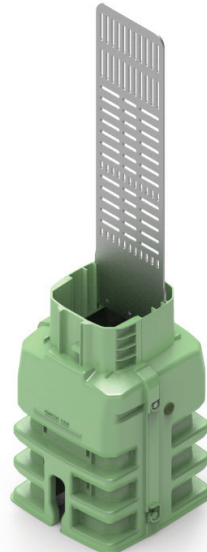
- Can be configured with COYOTE® Flip Trays, LITE-GRIP® Splice Trays and Legacy Splice Trays
- Internal Cross-Connect or Hardened Connectivity Features for all splice tray configurations
- Ability to place hardened terminals; up to 8-Port Corning Evolv® Terminals
- Can place routing handles to properly store/waterfall copper splices

With Metal Back Plane

- Accommodates most copper and fiber terminals
- Allows for ample space concerning fiber bend radius of MST/ Hardened Drops
- Can accommodate the COYOTE® PEDBOX® and other distribution splice enclosures



COYOTE® 8" Pedestal,
Universal Organizer w/
Busbar and Split Base



COYOTE® 8" Pedestal,
Metal Back Plane and
Split Base

COYOTE® 8" Pedestal Kits

Catalog Number	Description
COYPED8-UOS	COYOTE® 8" Pedestal, Universal Organizer with Anchor Stake – Includes (1) 8" Pedestal, Universal Organizer with Busbar and Split Base, (1) Dome, (1) Small Parts Bag, (1) Cable Retention Kit, and (1) Anchor Stake with Attachment Hardware
COYPED8-UON	COYOTE® 8" Pedestal, Universal Organizer without Anchor Stake – Includes (1) 8" Pedestal, Universal Organizer with Busbar and Split Base, (1) Dome, (1) Small Parts Bag, and (1) Cable Retention Kit
COYPED8-MBPS	COYOTE® 8" Pedestal, Metal Back Plane with Anchor Stake – Includes (1) 8" Pedestal, Metal Back Plane and Split Base, (1) Dome, and (1) Anchor Stake with Attachment Hardware
COYPED8-MBPN	COYOTE® 8" Pedestal, Metal Back Plane without Anchor Stake – Includes (1) 8" Pedestal, Metal Back Plane and Split Base, and (1) Dome

All kits include (1) COYOTE 8" Pedestal with Organizer, (1) Dome, and (1) Split Base. Anchor Stakes, Accessory Kits and Splice Trays Sold Separately.

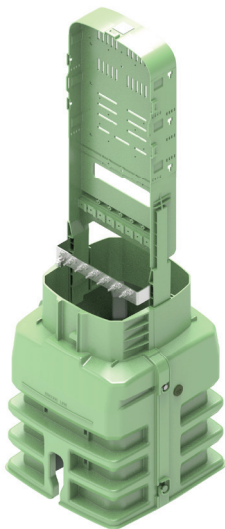
COYOTE® 10" PEDESTAL ORGANIZER ASSEMBLIES

With Universal Organizer

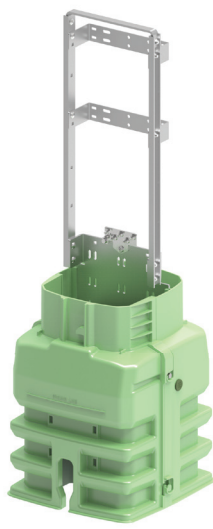
- Can be configured with COYOTE® Flip Trays, LITE-GRIP® Splice Trays and Legacy Splice Trays
- Internal Cross-Connect or Hardened Connectivity Features for all splice tray configurations
- Ability to place hardened terminals; up to 8-Port Corning Evolv® Terminals
- Can place routing handles to properly store/waterfall copper splices

With Metal Frame

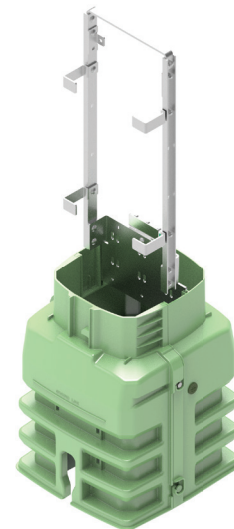
- Accommodates most copper and fiber terminals
- Allows for ample space concerning fiber bend radius of MST/ Hardened Drops
- Can accommodate the COYOTE® STP-L, STP-XL, PEDBOX®, and other distribution splice enclosures



COYOTE® 10" Pedestal,
Universal Organizer w/
Busbar and Split Base



COYOTE® 10" Pedestal,
Metal Frame w/ Dual Offset
Brackets and Split Base



COYOTE® 10" Pedestal,
Metal Frame w/ STP PRO
Mounting Brackets and
Split Base

COYOTE® 10" Pedestal Kits

Catalog Number	Description
COYPED10-UOS	COYOTE® 10" Pedestal, Metal Frame with Dual Offset Brackets with Anchor Stake – Includes (1) 10" Pedestal, Metal Frame and Split Base, (1) Dome, and (1) Anchor Stake with Attachment Hardware
COYPED10-UON	COYOTE® 10" Pedestal, Metal Frame with Dual Offset Brackets without Anchor Stake – Includes (1) 10" Pedestal, Metal Frame and Split Base, and (1) Dome
COYPED10-MFDOS	COYOTE® 10" Pedestal, Metal Frame with Dual Offset Brackets with Anchor Stake – Includes (1) 10" Pedestal, Metal Frame and Split Base, (1) Dome, and (1) Anchor Stake with Attachment Hardware
COYPED10-MFDON	COYOTE® 10" Pedestal, Metal Frame with Dual Offset Brackets without Anchor Stake – Includes (1) 10" Pedestal, Metal Frame and Split Base, and (1) Dome
COYPED10-MFSTPS	COYOTE® 10" Pedestal, Metal Frame, STP Pro Series Brackets with Anchor Stake – Includes (1) 10" Pedestal, Metal Frame and Split Base, (1) Dome, (1) STP Pro Series Mounting Hardware Bag, and (1) Anchor Stake with Attachment Hardware
COYPED10-MFSTPN	COYOTE® 10" Pedestal, Metal Frame, STP Pro Series Brackets without Anchor Stake – Includes (1) 10" Pedestal, Metal Frame and Split Base, (1) Dome, and (1) STP Pro Series Mounting Hardware Bag

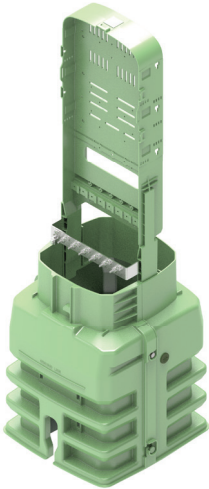
All kits include (1) COYOTE 10" Pedestal with Organizer, (1) Dome, and (1) Split Base. Anchor Stakes, Accessory Kits and Splice Trays Sold Separately.

Corning Evolv® Solution with Pushlok™ Technology is a registered trademark of Corning Cable Systems.

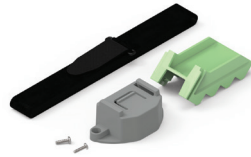
CO-CA-1004-20

COYOTE® PEDESTAL SPLICING KITS

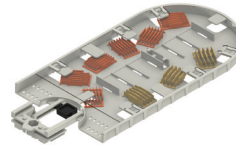
- Combines multiple different SKUs into one easy-to-order part number
- Simplifies storage and transportation of pedestal kits
- COYOTE® Pedestal Splicing Kits include: (1) COYOTE® Pedestal with Universal Organizer, (1) Splice Tray, (1) Tray Kit, and the option to include (1) Anchor Stake



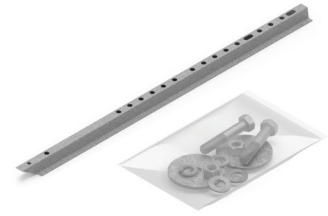
COYOTE Pedestal,
Universal Organizer
w/Busbar and Split Base



Tray Kit
(Catalog Number:
COYPED10-FLIPTK shown)



Splice Tray
(Catalog Number:
80814405 shown)



Anchor Stake Kit
(Optional)

COYOTE® 6" Pedestal Splicing Kits

Catalog Number	Description
COYPED6-UON-1-1	COYOTE 6" Pedestal with Universal Organizer and STPX-002 Splice Tray
COYPED6-UOS-1-1	COYOTE 6" Pedestal with Universal Organizer, STPX-002 Splice Tray, and Anchor Stake

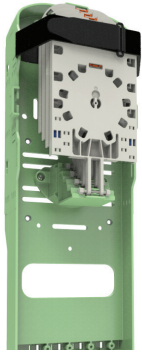
COYOTE® 8" Pedestal Splicing Kits

Catalog Number	Description
COYPED8-UON-1-1	COYOTE 8" Pedestal with Universal Organizer and 80813152 Splice Tray
COYPED8-UOS-1-1	COYOTE 8" Pedestal with Universal Organizer, 80813152 Splice Tray, and Anchor Stake
COYPED8-UON-2-1	COYOTE 8" Pedestal with Universal Organizer and 80808945 Splice Tray
COYPED8-UOS-2-1	COYOTE 8" Pedestal with Universal Organizer, 80808945 Splice Tray, and Anchor Stake
COYPED8-UON-3-1	COYOTE 8" Pedestal with Universal Organizer and 80814405 Flip Tray
COYPED8-UOS-3-1	COYOTE 8" Pedestal with Universal Organizer, 80814405 Flip Tray, and Anchor Stake

COYOTE® 10" Pedestal Splicing Kits

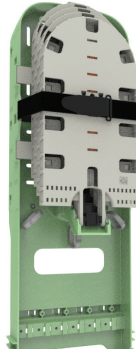
Catalog Number	Description
COYPED10-UON-1-1	COYOTE 10" Pedestal with Universal Organizer and 80813152 Splice Tray
COYPED10-UOS-1-1	COYOTE 10" Pedestal with Universal Organizer, 80813152 Splice Tray, and Anchor Stake
COYPED10-UON-2-1	COYOTE 10" Pedestal with Universal Organizer and 80808945 Splice Tray
COYPED10-UOS-2-1	COYOTE 10" Pedestal with Universal Organizer, 80808945 Splice Tray, and Anchor Stake
COYPED10-UON-3-1	COYOTE 10" Pedestal with Universal Organizer and 80814405 Flip Tray
COYPED10-UOS-3-1	COYOTE 10" Pedestal with Universal Organizer, 80814405 Flip Tray, and Anchor Stake

COYOTE® PEDESTAL FIBER SPLICING OPTIONS



COYOTE® 6" Pedestal,
Flip Tray Kit

Catalog Number:
COYPED6-FLIPTK



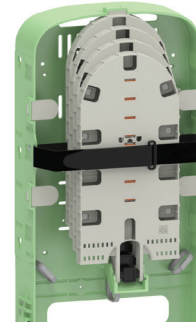
COYOTE 8" Pedestal,
Flip Tray Kit

Catalog Number:
COYPED8-FLIPTK



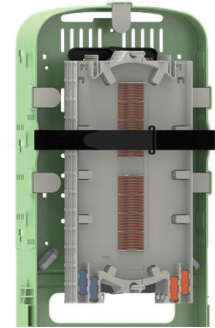
COYOTE 8" Pedestal,
LITE-GRIP® Tray Kit

Catalog Number:
COYPED8-LGTK



COYOTE 10" Pedestal,
LITE-GRIP® Tray Kit

Catalog Number:
COYPED10-FLIPTK



COYOTE 10" Pedestal,
LITE-GRIP® Tray Kit

Catalog Number:
COYPED10-LGTK

Fiber Splicing - 6" Pedestal Flip Trays

Catalog Number	Description
COYPED6-FLIPTK	COYOTE Flip Tray, Kit, 6" Pedestal
STPXL-TK-002	Low Profile Single Fusion Flip Tray, 24 CT.

Fiber Splicing - 8" Pedestal Flip Trays

Catalog Number	Description
COYPED8-FLIPTK	COYOTE Flip Tray, Kit, 8" Pedestal
80814405	Low Profile Flip Tray, 72 CT. Single Fusion or 144 CT. Mass Fusion
80814406	Deep Profile Flip Tray, 72 CT. Single Fusion or 288 CT. Mass Fusion

Fiber Splicing - 8" Pedestal LITE-GRIP Trays

Catalog Number	Description
COYPED8-LGTK	LITE-GRIP Tray Kit, 8" Pedestal
80813152	Splice Tray, COYOTE LITE-GRIP Short, Low Profile, 36 CT. Single Fusion
80808945	Splice Tray, COYOTE LITE-GRIP Short, Deep Profile, 40 CT. Single Fusion
80814649	Splice Tray, COYOTE LITE-GRIP Short, Deep Profile, 48 CT. Single Fusion, 144 CT. Mass Fusion

Fiber Splicing - 10" Pedestal Flip Trays

Catalog Number	Description
COYPED10-FLIPTK	COYOTE Flip Tray, Kit, 10" Pedestal
80814405	Low Profile Flip Tray, 72 CT. Single Fusion or 144 CT. Mass Fusion
80814406	Deep Profile Flip Tray, 72 CT. Single Fusion or 288 CT. Mass Fusion
80813238	Low Profile HD Flip Tray, 72 CT. Single Fusion or 288 CT. Mass Fusion

Fiber Splicing - 10" Pedestal LITE-GRIP Trays

Catalog Number	Description
COYPED10-LGTK	LITE-GRIP Tray Kit, 10" Pedestal
80813152	Splice Tray, COYOTE LITE-GRIP Short, Low Profile, 36 CT. Single Fusion
80808945	Splice Tray, COYOTE LITE-GRIP Short, Deep Profile, 40 CT. Single Fusion
LGSTS72	Splice Tray, COYOTE LITE-GRIP Long, Deep Profile, 72 CT. Single Fusion
80814650	Splice Tray, COYOTE LITE-GRIP Long, Deep Profile, 96 CT. Single Fusion or 288 CT. Mass Fusion



COYOTE® PEDESTAL CROSS-CONNECT ORGANIZER OPTIONS



COYOTE® Pedestal XC Bulkhead, 12-Port
Catalog Number:
COYPED-BLKHD12P



COYOTE® Pedestal XC Bulkhead, 24-Port
Catalog Number:
COYPED-BLKHD24P



COYOTE® 10" Pedestal, XC Bulkhead, 48-Port
Catalog Number:
COYPED10-BLKHD48P



COYOTE® 6" Pedestal, Internal Cross-Connect Kit
Catalog Number:
COYPED6-IXC

Fiber Splicing and Patching - Adapter Bulkheads

Catalog Number	Description
COYPED-BLKHD12P	Adapter Bulkhead, 12-Port, All Pedestals
COYPED-BLKHD24P	Adapter Bulkhead, 24-Port, All Pedestals
COYPED10-BLKHD48P	Adapter Bulkhead, 48-Port, 10" Pedestal Only
80813988	Flangeless Adapter Kit – Includes (6) SC/APC Duplex Flangeless Adapters
80813989	Flangeless Adapter Kit – Includes (6) SC/UPC Duplex Flangeless Adapters
80813990	Flangeless Adapter Kit – Includes (6) LC/APC Quad Flangeless Adapters
80813991	Flangeless Adapter Kit – Includes (6) LC/UPC Quad Flangeless Adapters

Fiber Splicing and Patching - Internal Cross-Connect Bulkheads

Catalog Number	Description
COYPED6-IXC	Internal Cross-Connect Bulkhead, 6" Pedestal
COYPED8-IXC	Internal Cross-Connect Bulkhead, 8" Pedestal
80813595	Adapter Kit – Includes (8) SC/APC Duplex Adapters
80813596	Adapter Kit – Includes (8) SC/UPC Duplex Adapters
80813599	Adapter Kit – Includes (8) LC/APC Quad Adapters
80813600	Adapter Kit – Includes (8) LC/UPC Quad Adapters

COYOTE Pedestal Cross-Connect Accessories

Catalog Number	Description
COYTRM-2PK-SCA-SB	Pigtail Kit – Includes (2) SC/APC 2 mm Jacketed Pigtails with Short Boot Connectors
COYTRM-3PK-SCA-SB	Pigtail Kit – Includes (3) SC/APC 2 mm Jacketed Pigtails with Short Boot Connectors
COYTRM-4PK-SCA-SB	Pigtail Kit – Includes (4) SC/APC 2 mm Jacketed Pigtails with Short Boot Connectors
COYSP1X2SCA	COYOTE Pre-Connectorized Splitter - 1x2 SC/APC
COYSP1X4SCA	COYOTE Pre-Connectorized Splitter - 1x4 SC/APC
COYSP1X8SCA	COYOTE Pre-Connectorized Splitter - 1x8 SC/APC
COYSP1X16SCA	COYOTE Pre-Connectorized Splitter - 1x16 SC/APC

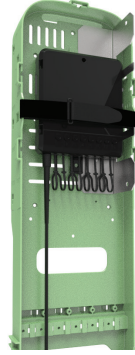
OptiTap® is a registered trademark of Corning Cable Systems.

COYOTE® PEDESTAL ORGANIZER OPTIONS



COYOTE 10" Pedestal,
OptiTap® Terminal
Bulkhead

Catalog Number:
COYPED10-BLKHDTRM



COYOTE 8" & 10"
Pedestal, Terminal
Mounting Kit

Catalog Number:
COYPED810-TM



COYOTE 10" Pedestal,
Expanded Buffer Tube
Storage Brackets

Catalog Number:
COYPED10-EXBT



COYOTE 8" Pedestal, Copper
Routing Handle Kit

Catalog Number:
COYPED8-CWH

Hardened Connectivity - OptiTap® Terminal Bulkheads

Catalog Number	Description
COYPED6-BLKHDTRM	COYOTE 6" Pedestal OptiTap Terminal Bulkhead, 4-Port
COYPED8-BLKHDTRM	COYOTE 8" Pedestal OptiTap Terminal Bulkhead, 8-Port
COYPED10-BLKHDTRM	COYOTE 10" Pedestal OptiTap Terminal Bulkhead, 12-Port
80807972	Hardened Adapter Installation Tool
8003715	OptiTap® Adapter Kit – Includes (1) OptiTap Adapter and (1) Installation Tool
8004115	Bulk Pack of OptiTap Adapters – Includes (10) OptiTap Adapters

Terminal Bracket

Catalog Number	Description
COYPED810-TM	Terminal Mounting Kit, 8" and 10" Pedestals

Expanded Buffer Tube Storage Brackets

Catalog Number	Description
COYPED10-EXBT	Expanded Buffer Tube Storage Brackets, 10" Pedestal

Copper Applications

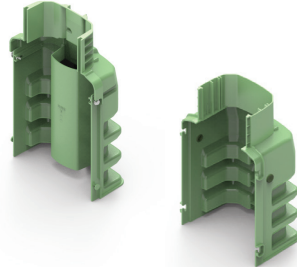
Catalog Number	Description
COYPED6-CWH	Copper Waterfall Handle Kit, 6" Pedestal
COYPED8-CWH	Copper Waterfall Handle Kit, 8" Pedestal
COYPED10-CWH	Copper Waterfall Handle Kit, 10" Pedestal

COYOTE® PEDESTAL REPLACEMENT KITS



Dome Replacement Kit

Catalog Number:
COYPED8-DOME



Base Replacement Kit

Catalog Number:
COYPED8-BASE

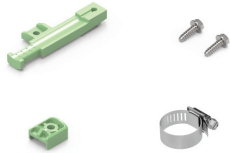


Ground Plate Kit

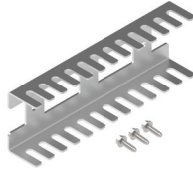
Catalog Number:
COYPED8-GRDPLT

Catalog Number	Description
COYPED6-DOME	COYOTE 6" Dome Replacement Kit
COYPED8-DOME	COYOTE 8" Dome Replacement Kit
COYPED10-DOME	COYOTE 10" Dome Replacement Kit
COYPED6-BASE	COYOTE 6" Base Replacement Kit
COYPED8-BASE	COYOTE 8" Base Replacement Kit
COYPED10-BASE	COYOTE 10" Base Replacement Kit
COYPED6-GRDPLT	Grounding Plate Kit for 6" Pedestal – Includes (1) Ground Plate Assembly and (1) Bonding Braid
COYPED8-GRDPLT	Grounding Plate Kit for 8" Pedestal – Includes (1) Ground Plate Assembly and (1) Bonding Braid
COYPED10-GRDPLT	Grounding Plate Kit for 10" Pedestal – Includes (1) Ground Plate Assembly and (1) Bonding Braid

COYOTE PEDESTAL ACCESSORIES



Catalog Number:
COYPED-CRB
Cable Restraint
Bracket Kit
Pack of 20



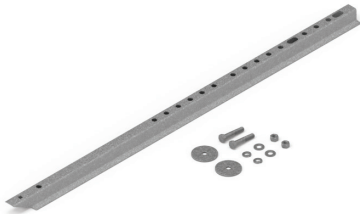
Catalog Number:
COYPED810-MD7
7 mm Microduct
Bracket Kit
For 8" and 10"
Pedestals



Catalog Number:
COYPED-BNDBRD
Bonding Braid Kit
Pack of 20



Catalog Number:
COYPED-GRDPLTEX
Ground Plate Extension Kit



Catalog Number:
COYPED-AS42
42" Anchor Stake Kit



Catalog Number:
COYPED-FBRTAB
Fiber Retention Tab Kit
Pack of 50



Catalog Number:
COYPED-FBRCLIP
Fiber Cable
Management Clip Kit
Pack of 10



Catalog Number:
COYPED-DRPGMT
Drop Port Grommet
Pack of 20

Catalog Number	Description
COYPED-CRB	Cable Restraint Bracket Kit – Includes (20) Strength Member Brackets, (20) Strength Member Bracket Caps, (20) Hose Clamps, and (40) Hex Head Self-Tapping Screws
COYPED-DRPCHNL	Drop Channel Kit – Includes (1) Drop Channel and (1) Foam Plug
COYPED-BNDBRD	Bonding Braid Kit – Includes (20) Bonding Braids
COYPED-AS42	Anchor Stake Kit – Includes (1) 42" Anchor Stake and Mounting Hardware
COYPED-AS32	Anchor Stake Kit – Includes (1) 32" Anchor Stake and Mounting Hardware
COYPED-FBRTAB	Retention Tab Kit – Includes (50) Retention Tabs
COYPED-FBRCLIP	Fiber Cable Management Clip Kit – Includes (10) Fiber Routing Clips
COYPED-DRPGMT	Base Drop Grommet Kit – Includes (20) Base Drop Grommets
COYPED-GRDPLTEX	Grounding Plate Kit Extension Kit
COYPED6-MD5	6" Pedestal 5 mm Microduct Bracket Kit - Accepts (20) 5 mm Microducts
COYPED6-MD7	6" Pedestal 7 mm Microduct Bracket Kit - Accepts (20) 7 mm Microducts
COYPED810-MD5	8" and 10" Pedestals 5 mm Microduct Bracket Kit - Accepts (24) 5 mm Microducts
COYPED810-MD7	8" and 10" Pedestals 7 mm Microduct Bracket Kit - Accepts (24) 7 mm Microducts