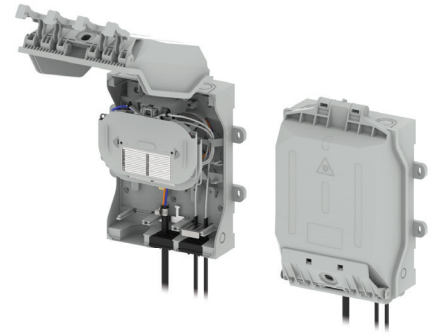




COYOTE® DEN3 WALL BOX

INSTALLATION INSTRUCTIONS



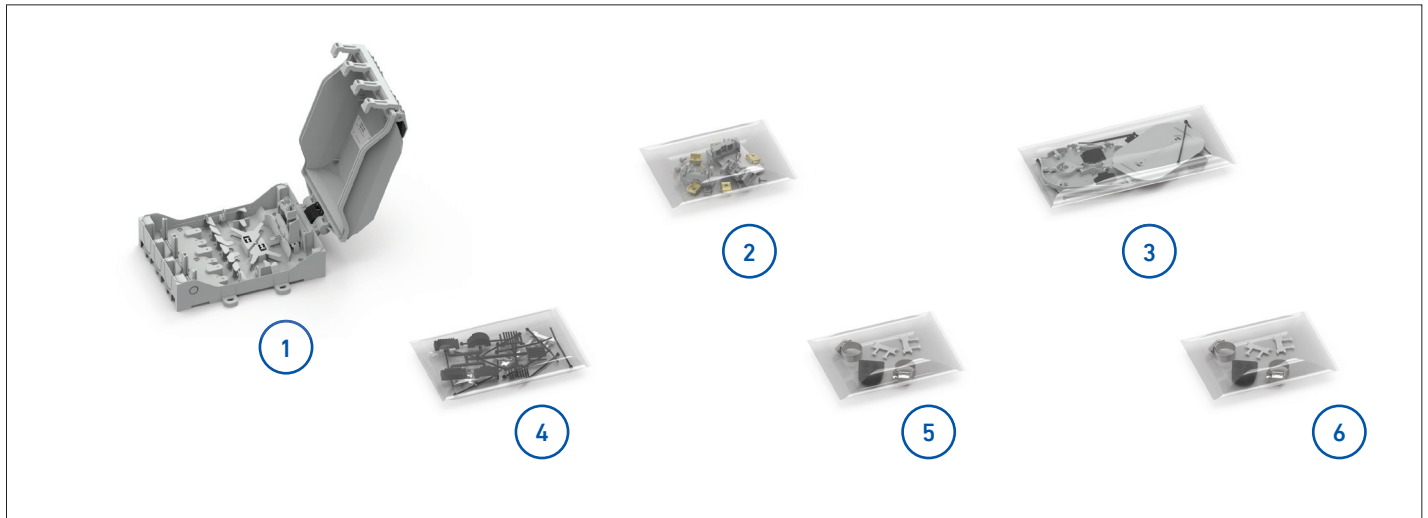
IMPORTANT SAFETY INFORMATION

READ AND COMPLETELY UNDERSTAND ALL INSTRUCTIONS BEFORE INSTALLING PRODUCT. FAILURE TO FOLLOW THESE INSTRUCTIONS MAY RESULT IN PERSONAL INJURY OR DEATH.

This product is intended for use by trained technicians only. This product should not be used by anyone who is not familiar with and not trained to use it. When working in the area of energized lines, extra care should be taken to prevent accidental electrical contact. Be sure to wear proper safety equipment per your company protocol. These instructions are not intended to supersede any company construction or safety standards. These instructions are offered only to illustrate safe installation for the individual. PLP products are intended for the specified application only. Do not modify this product under any circumstances. Do not reuse or reinstall any PLP product unless that capability is expressly indicated in the product's Installation Instructions. For proper performance and personal safety, be sure to select the proper PLP product before installation. PLP products are precision devices. To ensure proper performance, they should be stored in cartons under cover and handled carefully.

PACKAGE COMPONENTS

DIRECT SPLICE VERSION



1. COYOTE DEN3 Cover & Base with Direct Splice Organizer (1)
2. Small Parts Bag (1)
3. COYOTE DEN 24 CT. Low-Profile Flip Splice Tray Kit (4)
4. 24-Hole Grommet Kit - Contains 1 Grommet (1)
(0.07" – 0.12" Cable Diameter Range)
5. 4-Hole Grommet Kit - Contains 1 Grommet (1)
(0.30" – 0.38" Cable Diameter Range)
6. 4-Hole Grommet Kit - Contains 1 Grommet (1)
(2 Holes: 0.38" – 0.46" Cable Diameter Range,
2 Holes: 0.46" – 0.51" Cable Diameter Range)

Tools Required:

- Philips Head Screwdriver
- T-20 Torx Driver
- Utility Knife
- Side Cutters
- Needle Nose Pliers
- Snips
- Fiber Optic Cable Opening Tools

PACKAGE COMPONENTS

CROSS-CONNECT VERSION



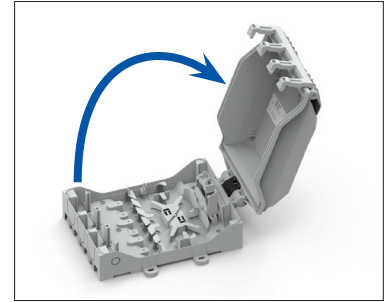
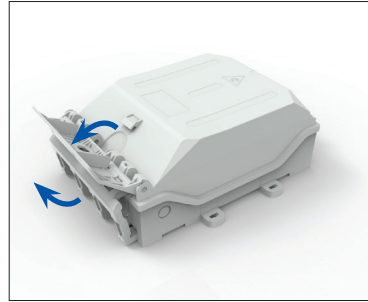
1. COYOTE DEN3 Cover & Base with Cross-Connect Organizer (1)
2. Small Parts Bag (1)
3. COYOTE DEN 24 CT. Low Profile Flip Splice Tray Kit (2)
4. 24-Hole Grommet Kit - Contains 1 Grommet (1)
(0.07" – 0.12" Cable Diameter Range)
5. 4-Hole Grommet Kit - Contains 1 Grommet (1)
(0.30" – 0.38" Cable Diameter Range)
6. 4-Hole Grommet Kit - Contains 1 Grommet (1)
(2 Holes: 0.38" – 0.46" Cable Diameter Range,
2 Holes: 0.46" – 0.51" Cable Diameter Range)

Tools Required:

- Philips Head Screwdriver
- T-20 Torx Driver
- Utility Knife
- Side Cutters
- Pliers
- Snips
- Fiber Optic Cable Opening Tools

WALL BOX PREPARATION

- 1 Pull the flap portion of the front latch down, disengage the portion under the base, and hinge the cover open.



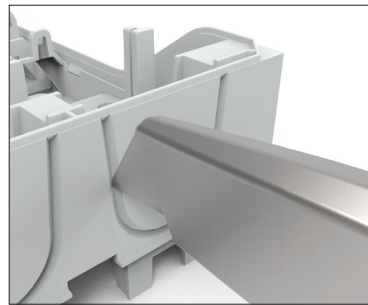
Hinging Cover Open

- 2 Score each cable entry port with a utility knife and snip each edge of the knockout tab with side cutters.

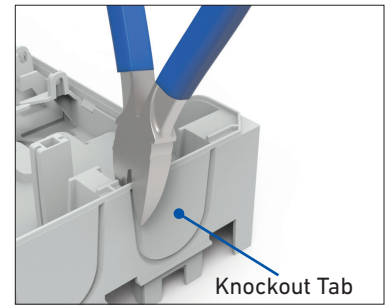
NOTE: Score each cable entry port multiple times for best results.

WARNING

Always score the cable entry ports with the utility knife away from your body. Not doing so can lead to physical injury.



Scoring Cable Port

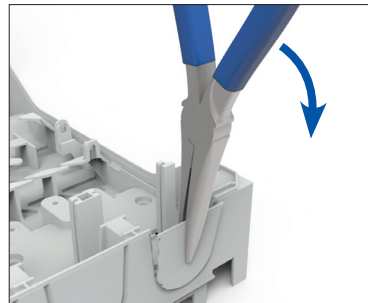


Snipping Edge of Knockout Tab

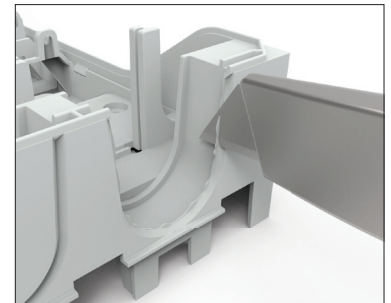
- 3 Remove each knockout tab by pulling the tab outwards from the base with pliers. Once the tabs have been removed, smooth out the remaining material of the cable entry ports with a utility knife.

WARNING

Always remove jagged cable entry port edges with the utility knife away from your body. Not doing so can lead to physical injury.



Removing Knockout Tab

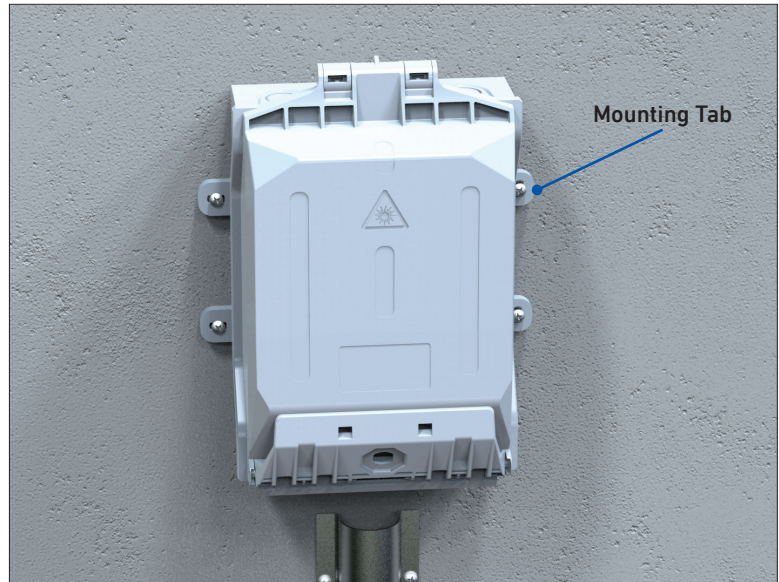


Removing Jagged Entry Port Edges

WALL MOUNT INSTALLATION

- 4A** Place the COYOTE DEN3 Wall Box against the wall at the desired location and secure the box by the mounting tabs with either 3/16" (5 mm) screws or bolts (not provided).

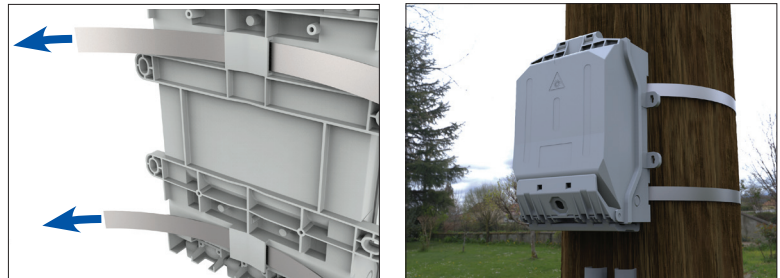
NOTE: If the box is being mounted to a cement or brick wall, mark the wall where the mounting tabs are located. Drill holes into the wall at the marked locations. Insert the appropriate anchors (not provided) into the holes for the 3/16" (5 mm) screws or bolts (not provided) that are being used to mount the box to the wall. Insert the screws or bolts through the mounting tabs and secure the wall box to the wall.



POLE MOUNT INSTALLATION

- 4B** Insert the banding (not provided) through the banding slot located on the bottom of the base as shown. Place the wall box against the pole at the desired location and tighten the banding to secure it to the pole.

NOTE: The banding slot of the base can accept up to 3/4" (19 mm) wide banding.



INSTALLING CABLES INTO GROMMETS

(4 HOLE, 8-HOLE, OR 12-HOLE)

- 5** Measure the cable to determine the diameter and hole location to use in the grommet.

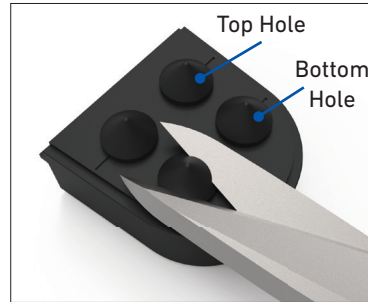


6

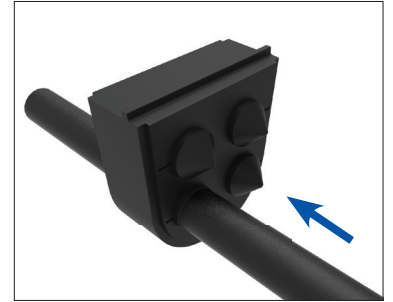
If using cut cable, snip off the plugged end of the grommet hole where the cable will enter, then insert the cable through the grommet.

NOTE: For direct splice applications, insert cables in the bottom holes of the grommet first. For cross-connect applications, insert incoming cables in the top holes of the grommet first and outgoing cables in the bottom holes of the grommet first.

If your application requires express/balloon/ring cut cables, see **Steps 7 – 8** for grommet slitting and cable installation procedures.



Cutting Plugged Grommet Hole

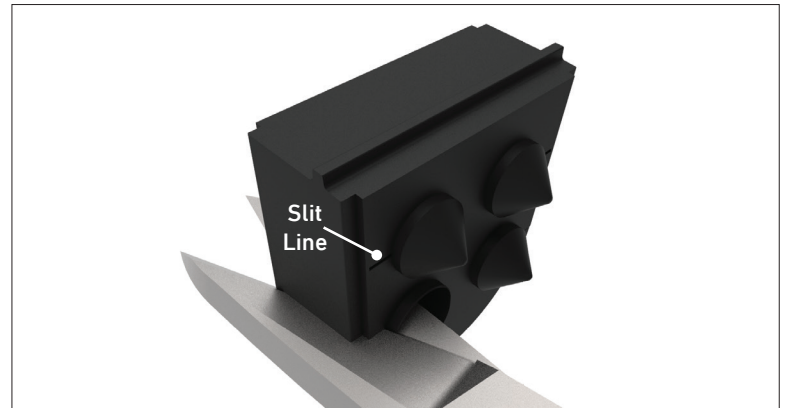


Inserting Cable Into Grommet

7

To slit grommets for expressed/balloon/ring cut cable applications, cut the grommet at the slit lines using snips as shown.

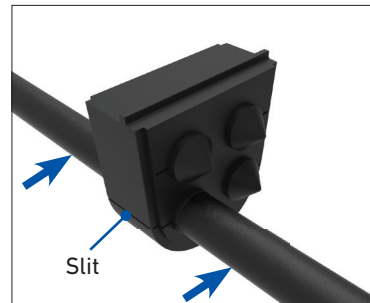
NOTE: For incoming expressed cables used in cross-connect applications, slit the grommet at the slit lines for the upper holes.



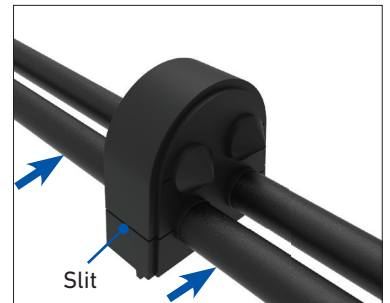
8

Insert the cable into the grommet through the slit.

NOTE: For incoming expressed cables used in cross-connect applications, flip the grommet upside down before inserting the cables.



Inserting Cable Into Grommet Through Slits



Incoming Expressed Cable Inserted Into Grommet for Cross-Connect Applications

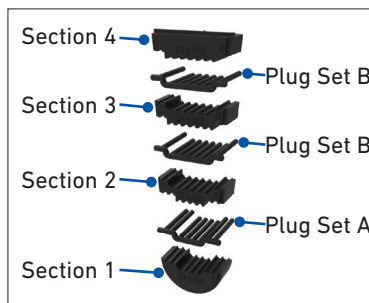
INSTALLING CABLE INTO GROMMET

24-HOLE

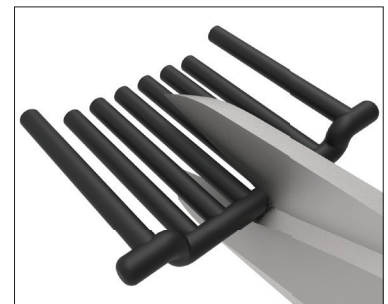
- 9 Measure the cable to verify the diameter.



- 10 Use the image shown as a guide for assembling the grommet. Determine which holes the cables will be placed in the grommet starting from the bottom and remove the appropriate plugs from each plug set with snips. Place the cables and plugs into the appropriate slots of the grommet sections and stack the grommet sections together.



24-Hole Grommet Assembly



Removing Grommet Plugs From Set



Installing Cables & Plugs into 24-Hole Grommet



Assembled 24-Hole Grommet

CABLE SHEATH OPENINGS FOR CUT CABLE END APPLICATIONS

- 11 Prepare cable(s) for cable end applications. Refer to the table to the right for the minimum sheath openings allowed for each organizer.

NOTE: Leave roughly 8" (203 mm) of the cable strength member(s) to trim later.

CAUTION

Follow the cable manufacturer's cable opening procedure to ensure the optical fibers of the cable are not cut or damaged.



Buffer Tube/Loose Tube Cable

| Minimum Sheath Openings for Cable End Applications | | | | |
|--|------|------|-------------|------|
| Cable Side | Feed | | Branch/Drop | |
| | in | m | in | m |
| Direct Splice | 77 | 1.96 | 77 | 1.96 |
| Cross-Connect | 74 | 1.88 | N/A | N/A |

CABLE SHEATH OPENINGS

FOR EXPRESSED CABLE APPLICATIONS WITH DEDICATED CUT FIBERS

- 12** Prepare cable for mid sheath application (express/balloon/ring cut cable). Refer to the table to the right for the minimum sheath openings allowed for each organizer.

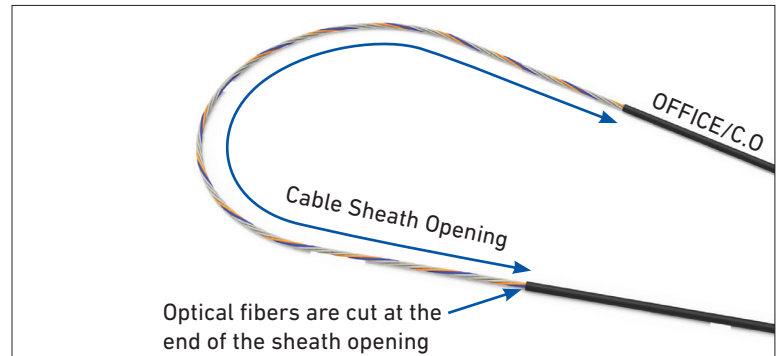
NOTE: For buffer tube/loose tube cables, the center of the sheath opening should align with the center of a buffer tube/loose tube switchback point of the cable.

Leave roughly 8" (203 mm) of the cable strength member(s) to trim later.

Splice points where optical fibers are dedicated to the splice point, and only allow the Office/C.O. side of the cut fibers to be spliced. The other side of the cut fibers will be dead for the remainder of the cable network.

CAUTION

Follow the cable manufacturer's cable opening procedure to ensure the optical fibers of the cable are not cut or damaged.



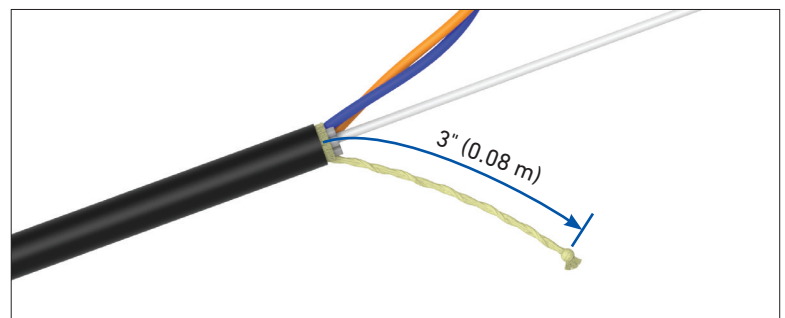
Buffer Tube/Loose Tube Cable

Minimum Sheath Openings for Applications Where Fiber is Dedicated to the Splice Point

| Cable Side | Feed | | Branch/Drop | |
|---------------|------|------|-------------|------|
| | in | m | in | m |
| Direct Splice | 77 | 1.96 | 77 | 1.96 |
| Cross-Connect | 74 | 1.88 | N/A | N/A |

CABLE PREPARATION FOR CABLES WITH ARAMID YARN

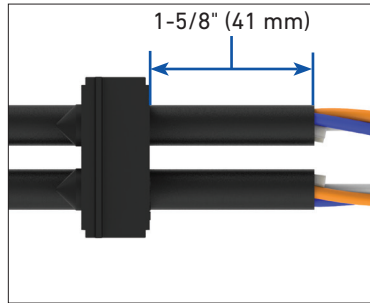
- 13** If the cable contains aramid yarn, braid roughly 3" (0.08 m) of the aramid yarn.



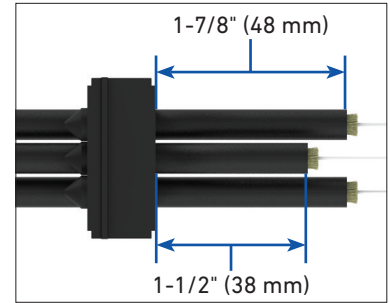
INSTALLING CABLE RESTRAINT BRACKETS ONTO ROUND CABLES

14

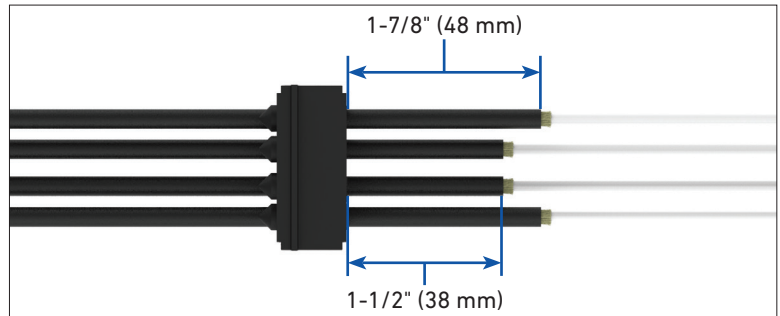
Adjust the cable(s) in the grommet so the cable sheath opening is the measured distance away from the face of the grommet as shown.



2-Leg Cable Restraint Bracket



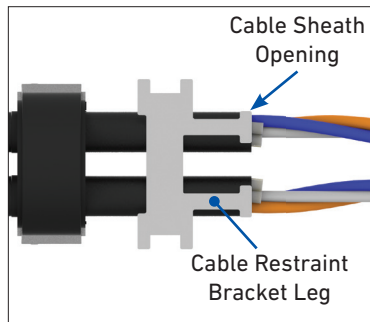
3-Leg Cable Restraint Bracket



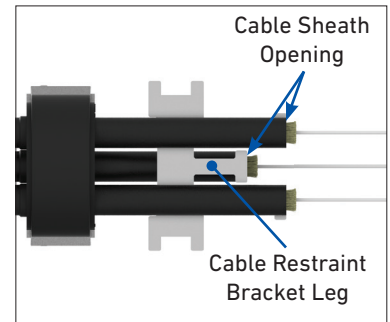
4-Leg Cable Restraint Bracket

15

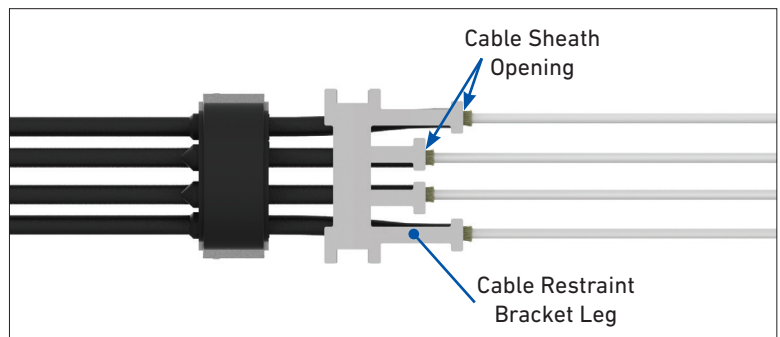
Align the cable sheath opening of each cable with the ends of the legs of the cable restraint bracket(s).



2-Leg Cable Restraint Bracket



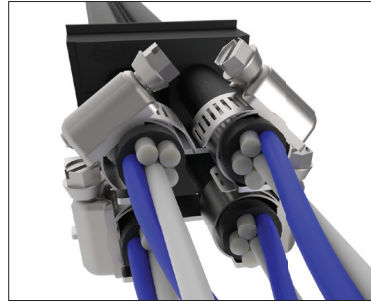
3-Leg Cable Restraint Bracket



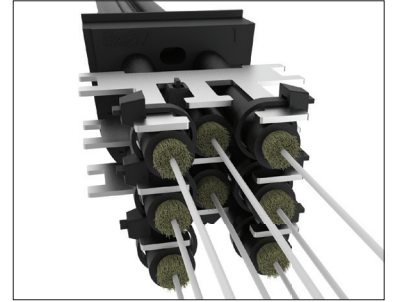
4-Leg Cable Restraint Bracket

- 16** Secure the cables to the legs of the cable restraint bracket(s) with the hose clamps or cable tie wraps that were provided in the grommet kit, as shown.

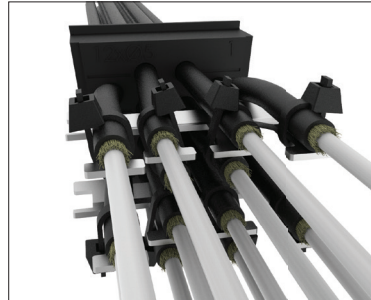
NOTE: Make sure the placement of the heads of the hose clamps or cable tie wraps are as shown.



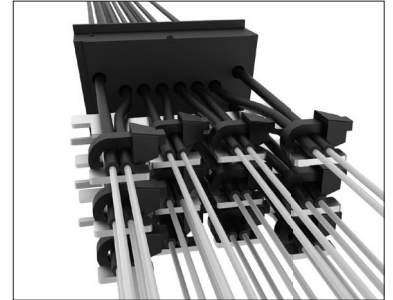
4-Hole Grommet



8-Hole Grommet



12-Hole Grommet



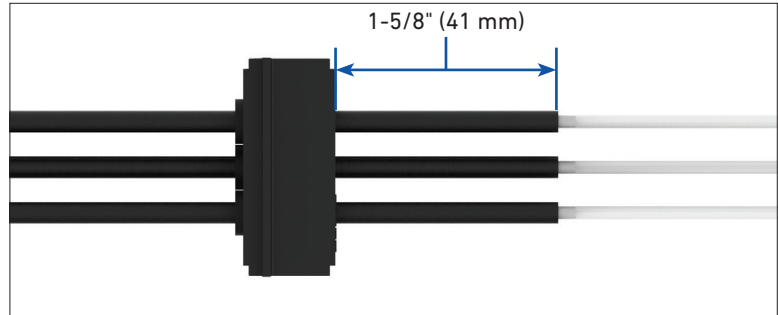
24-Hole Grommet

INSTALLING CABLE RETENTION CLIP ONTO FLAT DROP CABLES

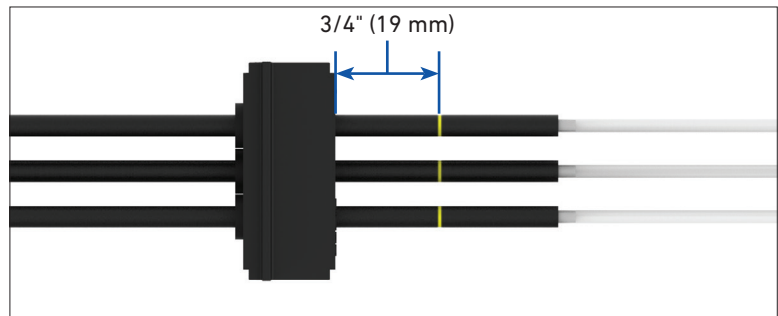
- 17** Trim the cable strength members as close to the cable sheath opening as possible.



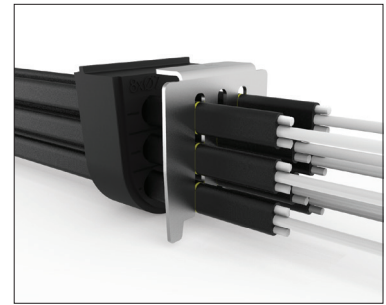
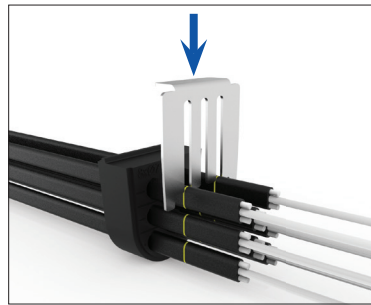
- 18 Adjust the cable(s) in the grommet so the cable sheath opening is 1-5/8" (41 mm) away from the face of the grommet.



- 19 Place a mark on each cable 3/4" (19 mm) away from the face of the grommet.



- 20 Position the retention clip even with the marks of the cables. Push down on the retention clip while stabilizing the cables to insert them into the slots of the retention clip. Keep pushing down on the retention clip until the cables are fully inserted into the slots.

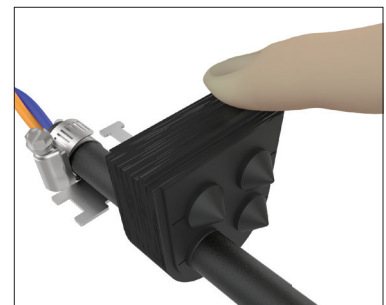
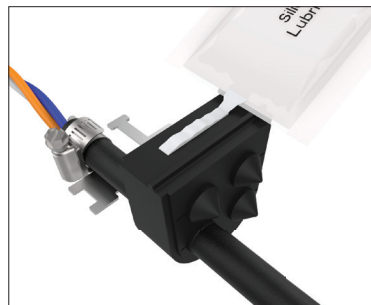


INSTALLING GROMMETS AND SECURING CABLES FOR DIRECT SPLICE APPLICATIONS

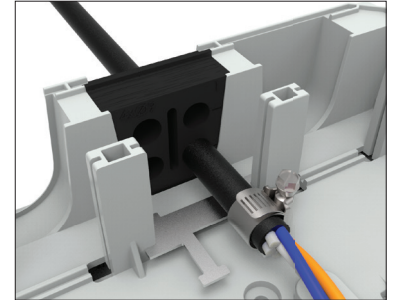
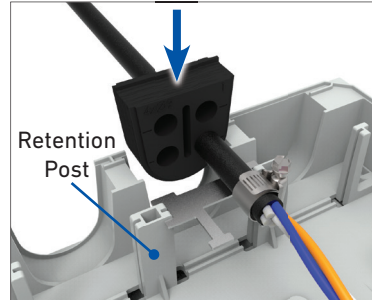
- 21 Lubricate the outer surface of the grommets with the silicone lubricant provided with the grommets. Spread the lubricant evenly around the outer surface of the grommet.

CAUTION

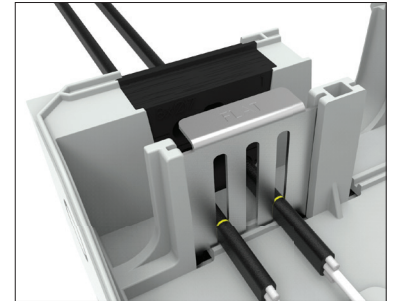
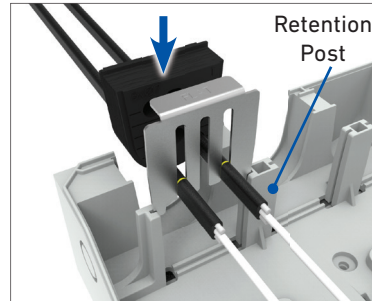
Only use the silicone lubricant provided. Other lubricants can cause the grommet not to seal properly in the wall box.



- 22** Insert the cable grommets into the pockets of the cable entry ports while installing the cable restraint brackets onto the retention posts of the organizer or the cable retention clips into the slots of the retention posts of the organizer.

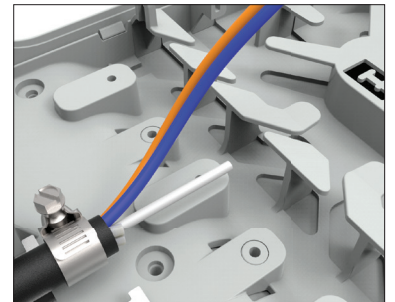
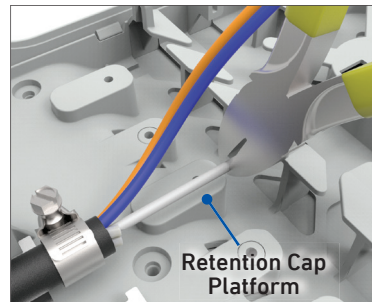


Grommet Installation with Cable Restraint Bracket

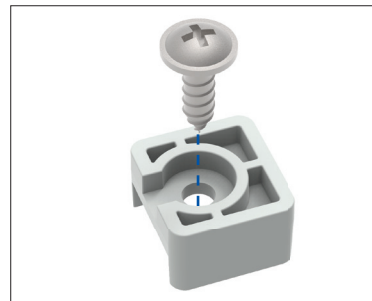


Grommet Installation with Cable Retention Clip

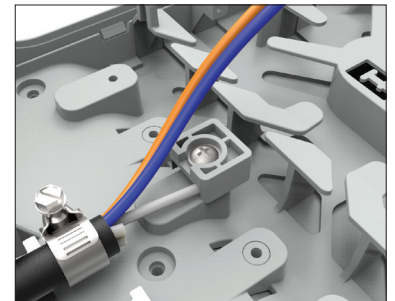
- 23** Trim the strength members of the cables flush with the ends of the retention cap platforms.



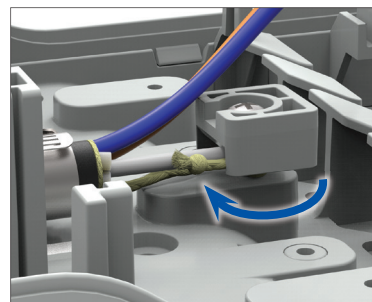
- 24** Insert the self-tapping screw into the retention cap. Capture the strength member(s) under the retention cap and secure the cap to the retention cap platform of the organizer. If the cable(s) contain aramid yarn, loosely install the cap to the platform. Wrap the braided aramid yarn(s) clockwise around the self-tapping screw under the cap and secure the cap to the platform.



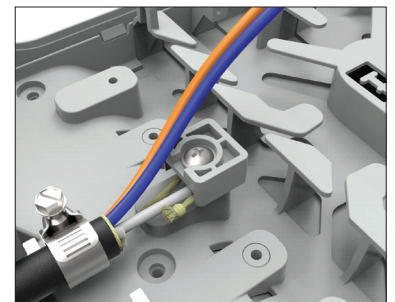
Installing Self-Tapping Screw in Cap



Securing Strength Member



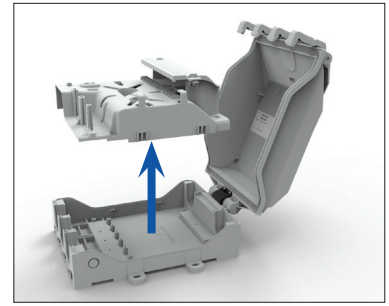
Wrapping Braided Aramid Yarn



Securing Strength Member and Yarn

SECURING THE INCOMING CABLE FOR CROSS-CONNECT APPLICATIONS

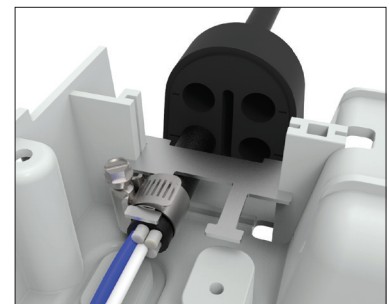
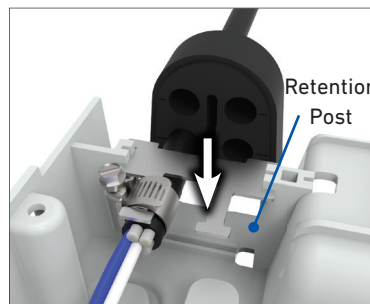
- 25** Remove the cross-connect organizer from the base of the wall box by using a flat-head screwdriver to disengage the retention tabs.



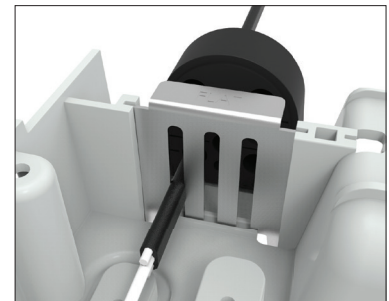
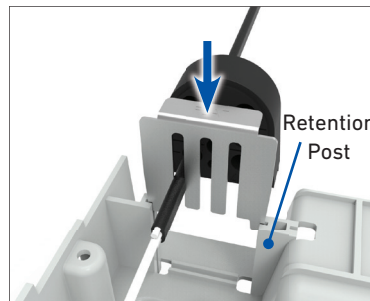
- 26** Flip the organizer upside down. Rotate the grommet around the cable 180 degrees and install the cable restraint bracket onto the retention posts on the bottom of the organizer or the cable retention clip into the slots of the retention posts.

NOTE: For the incoming expressed cables, the grommet does not need to be rotated since it was flipped upside down during installation.

NOTE: When using the cable restraint bracket, the bracket must be installed above the bottom row of cables to prevent interference with the organizer.

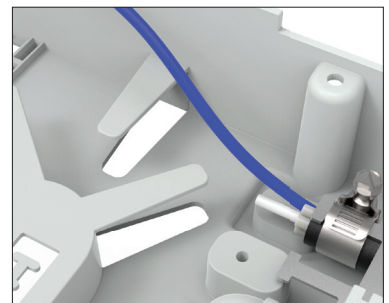
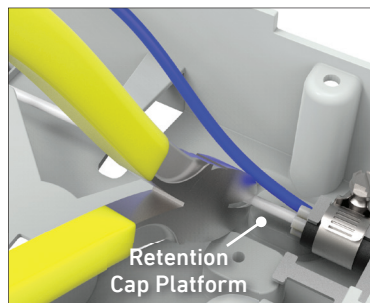


Cable Installation with Cable Restraint Bracket



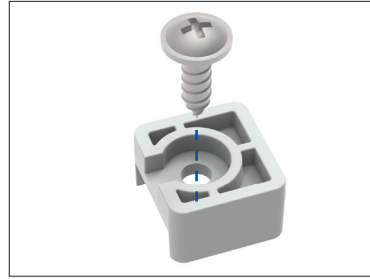
Cable Installation with Cable Retention Clip

- 27** Trim the strength member of the cable flush with the end of the strength member retention cap platform.

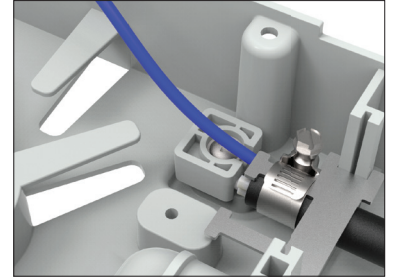


29

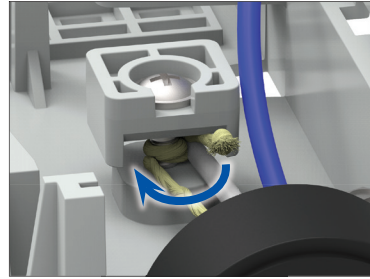
Insert the self-tapping screw into the retention cap. Capture the strength member(s) under the retention cap and secure the cap to the retention cap platform of the organizer. If the cable contains aramid yarn, loosely install the cap to the platform. Wrap the braided aramid yarn clockwise around the self-tapping screw under the cap and secure the cap to the platform.



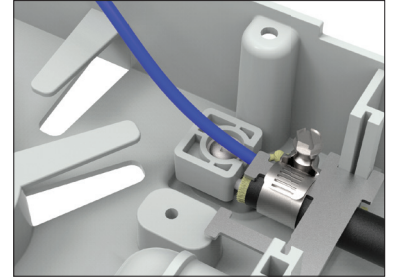
Installing Self-Tapping Screw in Cap



Securing Strength Member



Wrapping Braided Aramid Yarn

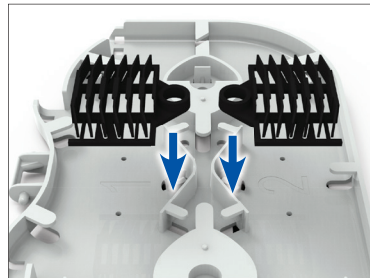


Securing Strength Member and Yarn

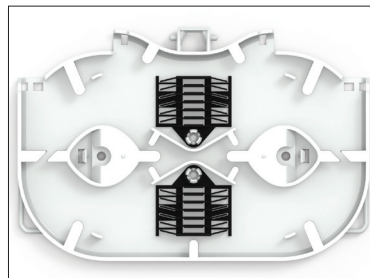
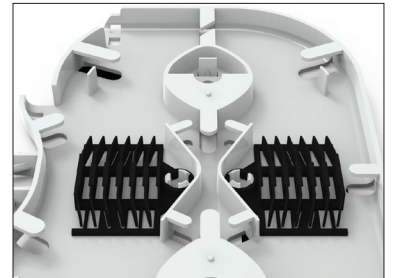
INSTALLING THE SPLICE AND SPLITTER BLOCKS INTO THE SPLICE TRAY

30

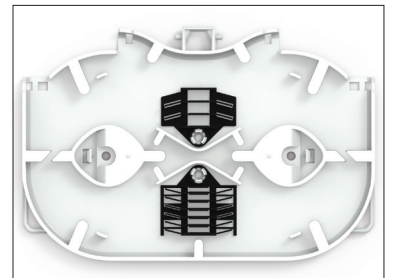
Install the splice block(s) and/or splitter block on the splice tray at the locations shown.



Installing Blocks into the Splice Tray



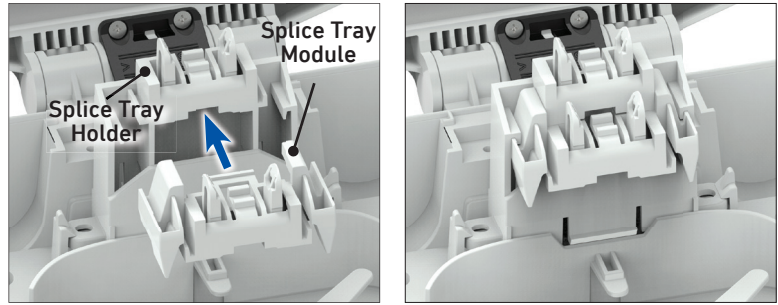
Two Splice Blocks Installed on the Splice Tray



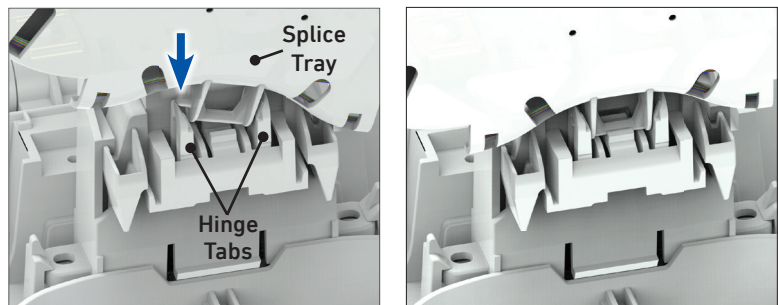
Splice Block and Splitter Block Installed on the Splice Tray

INSTALLING SPLICE TRAYS IN DIRECT SPLICE ORGANIZER

- 31** Insert additional splice tray modules into the splice tray holder as shown.

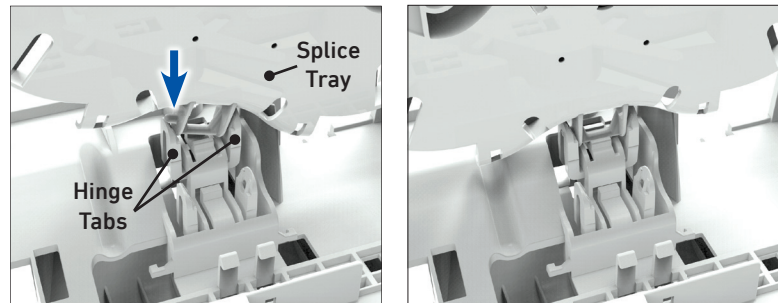


- 32** Install the splice trays into the hinge tabs of the splice tray modules and splice tray holder by inserting one of the hinge pins of the splice tray into a hinge tab and pushing down on the opposing side of the splice tray until the second hinge pin is secured into the opposite hinge tab.



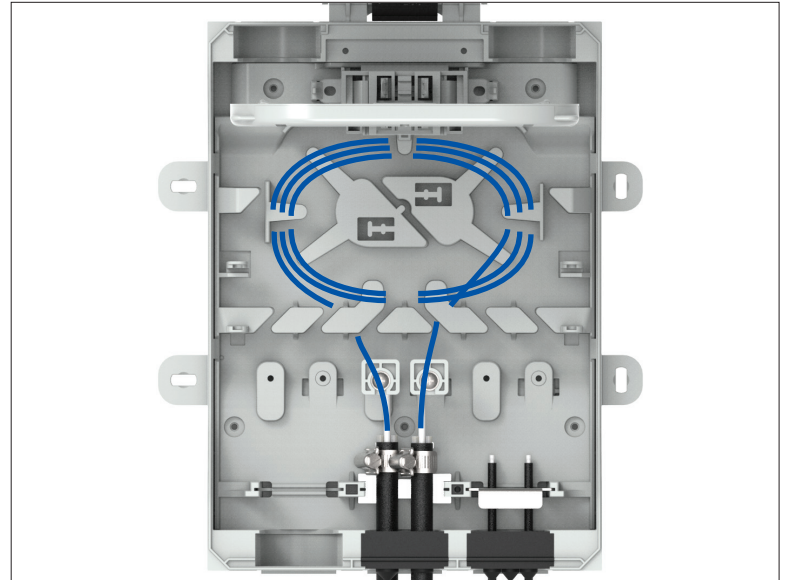
INSTALLING SPLICE TRAYS IN CROSS-CONNECT ORGANIZER

- 33** Install the splice tray into the hinge tabs located on the bottom of the organizer by inserting one of the hinge pins of the splice tray into a hinge tab and pushing down on the opposing side of the splice tray until the second hinge pin is secured into the opposite hinge tab.



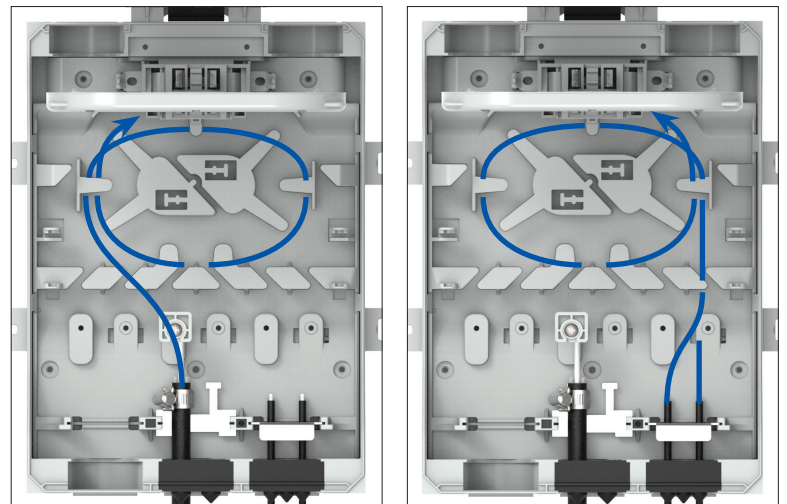
ROUTING IN DIRECT SPLICE ORGANIZER

- 34 Route the buffer tubes or the fibers to be expressed through the organizer as shown.

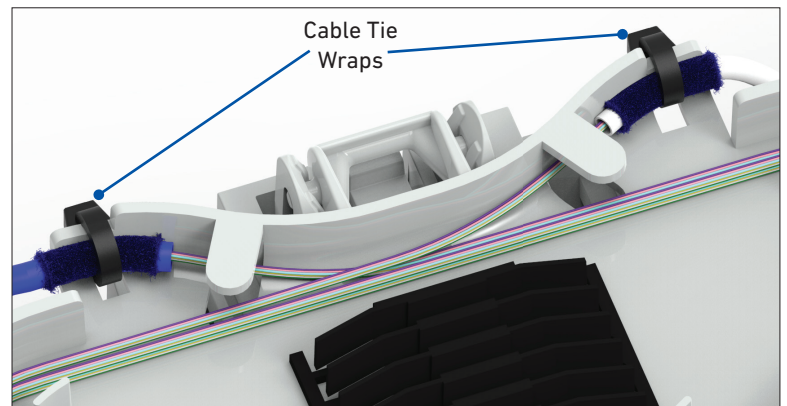


- 35 Route the incoming and the outgoing buffer tubes or fibers in the organizer as shown.

NOTE: Make sure that at least one slack loop is routed in the storage area before routing the buffer tubes or fibers to the splice tray(s).

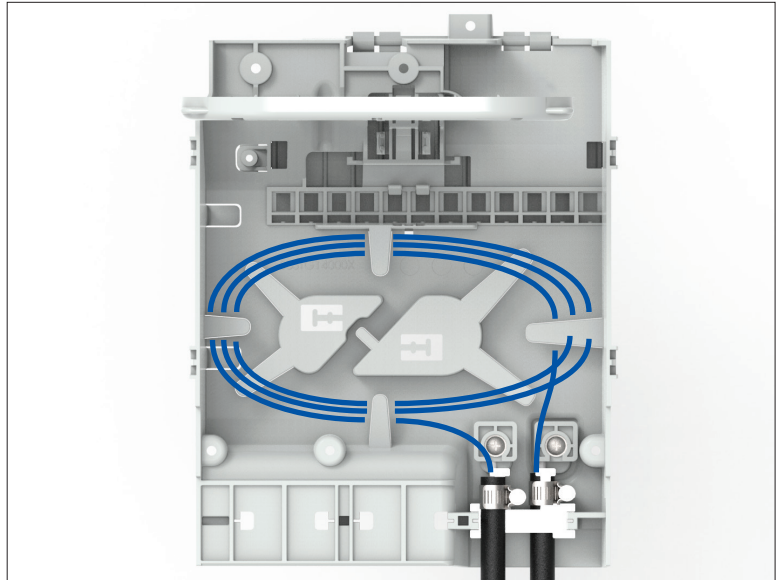


- 36 Wrap the ends of the buffer tubes with the felt (not provided) and secure them to the splice tray(s) with the cable tie wraps.



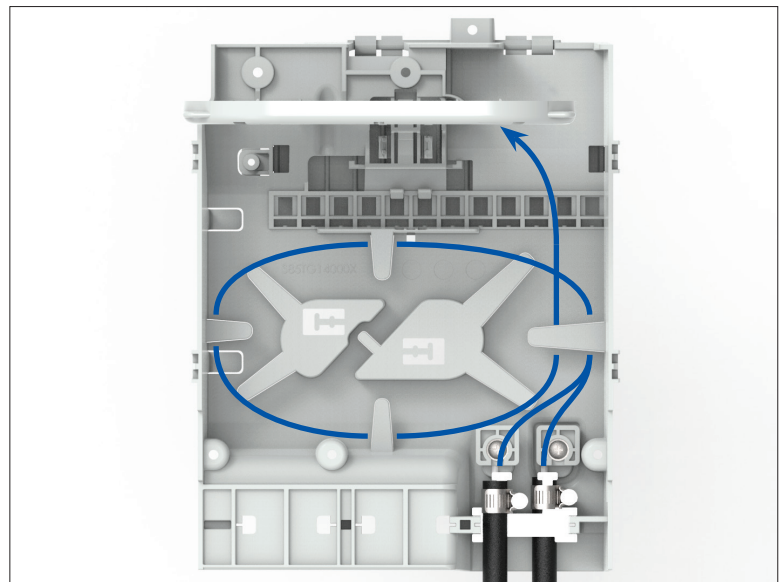
INCOMING BUFFER TUBE ROUTING IN CROSS-CONNECT ORGANIZER

- 37 Route the buffer tubes or the fibers to be expressed through the organizer as shown.

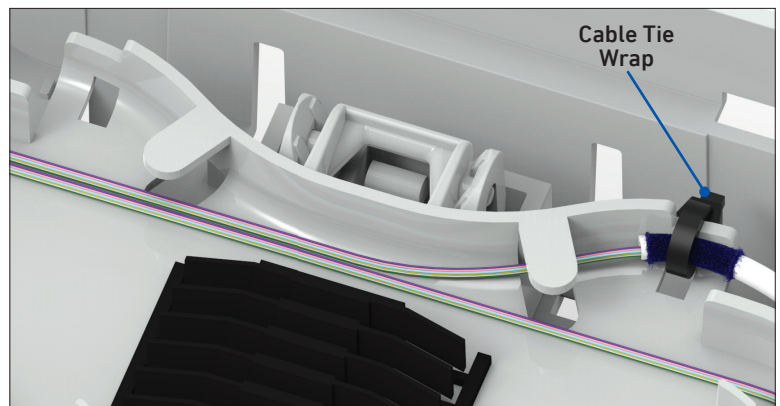


- 38 Route the incoming buffer tubes or the fibers in the organizer as shown.

NOTE: Make sure that at least one slack loop is routed in the storage area before routing the buffer tubes or fibers to the splice tray.



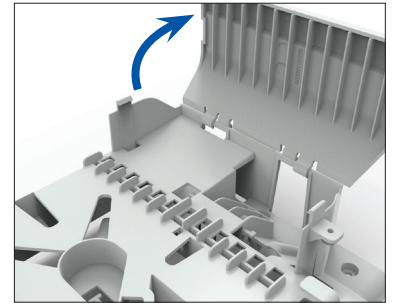
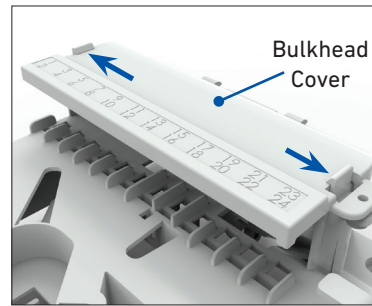
- 39 Wrap the end of the buffer tube with the felt (not provided) and secure it to the splice tray with a cable tie wrap.



INSTALLING ADAPTERS AND ROUTING INCOMING PIGTAILS IN CROSS-CONNECT ORGANIZER

- 40** Push out on the retention tabs to release the bulkhead cover and hinge it open.

NOTE: The bulkhead cover is numbered for connector port identification. Refer to the port numbers when installing the adapters and the connectors in the future steps.

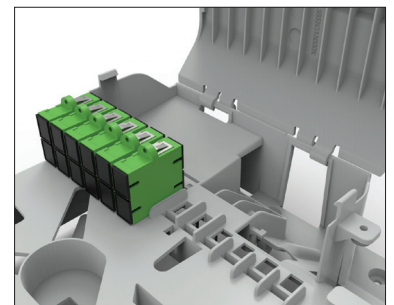
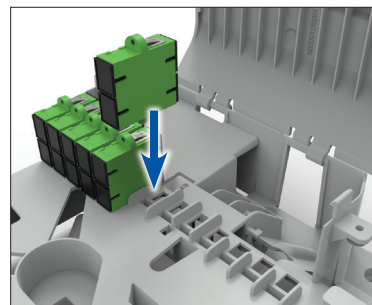


- 41** Insert the adapters into the adapter slots of the organizer from left to right as shown.

NOTE: Only the duplex SC and the quad LC adapters with the flanges can be used in the organizer.

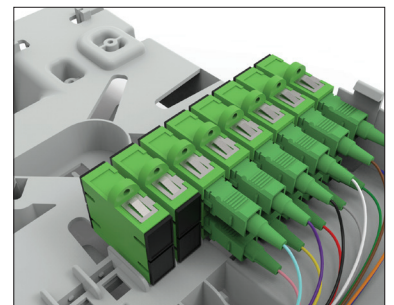
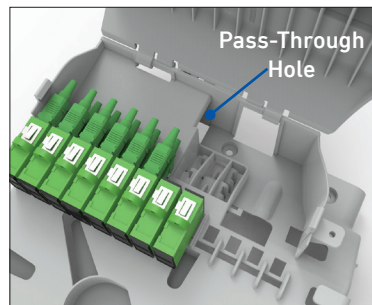
CAUTION

Make sure that the correct adapters are being installed into the slots of the organizer. The adapters cannot be removed once they have been installed.

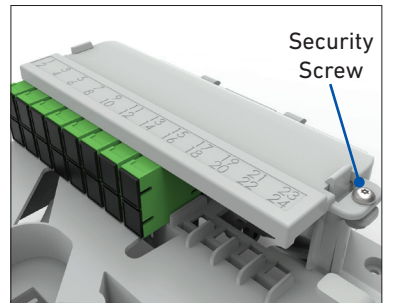
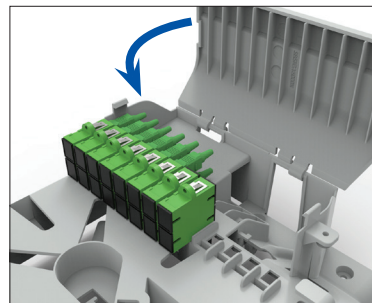


- 42** Remove the covers from the back of the adapters and insert the incoming pigtail connectors into the adapters. Route the pigtails through the pass-through hole of the organizer as shown.

NOTE: Follow your standard company practice for cleaning and installing the connectors.

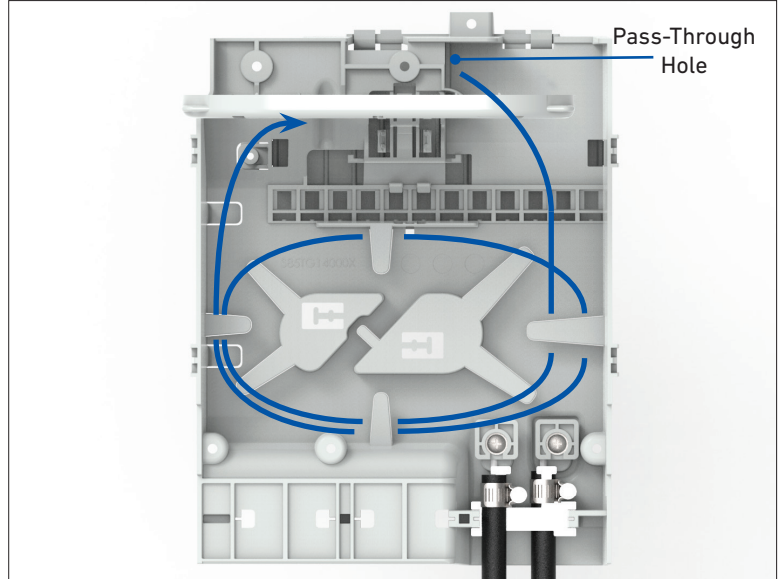


- 43** Hinge the bulkhead cover down until it is secured by the retention tabs. If required, a #6 self-tapping screw (not provided) can be used to secure the cover.

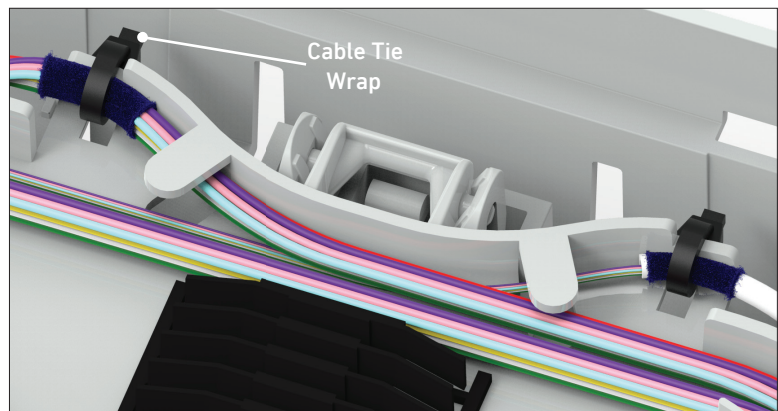


- 44 Route the pigtails from the pass-through hole to the splice tray as shown.

NOTE: At least 52" (1.32 m) pigtail length is needed in order to fully route the pigtail from the adapter to the splice tray.

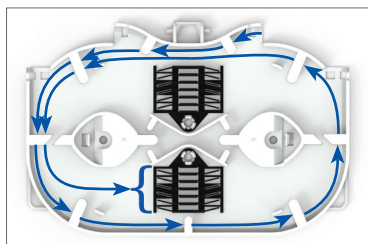


- 45 Wrap the pigtail bundle with the felt (not provided) where the cable tie wrap slot is located on the splice tray and secure them to the splice tray with a cable tie wrap.

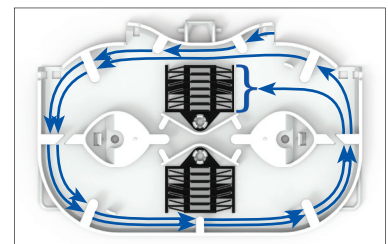


SPLICE TRAY MANAGEMENT

- 46 Route the incoming fibers in each splice tray as shown.

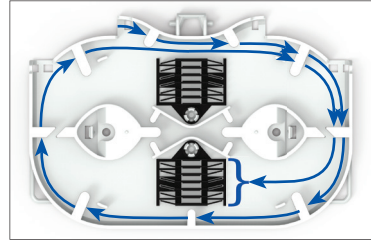


Routing for Incoming Fibers 1 – 12

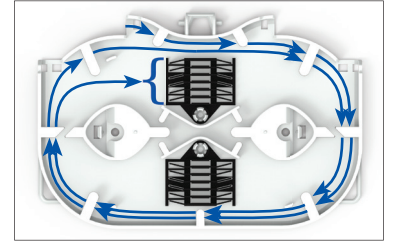


Routing for Incoming Fibers 13 – 24

- 47** Route the outgoing fibers in each splice tray as shown.

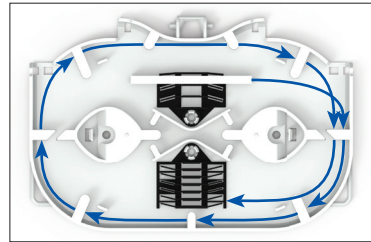


Routing for Outgoing Fibers 1 – 12

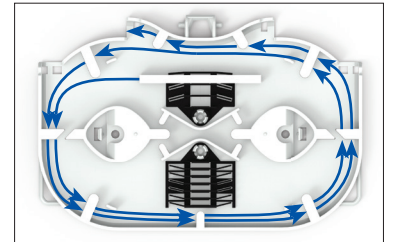


Routing for Outgoing Fibers 13 – 24

- 48** For splitter applications, route the incoming and the outgoing fibers of the splitter in each splice tray as shown.

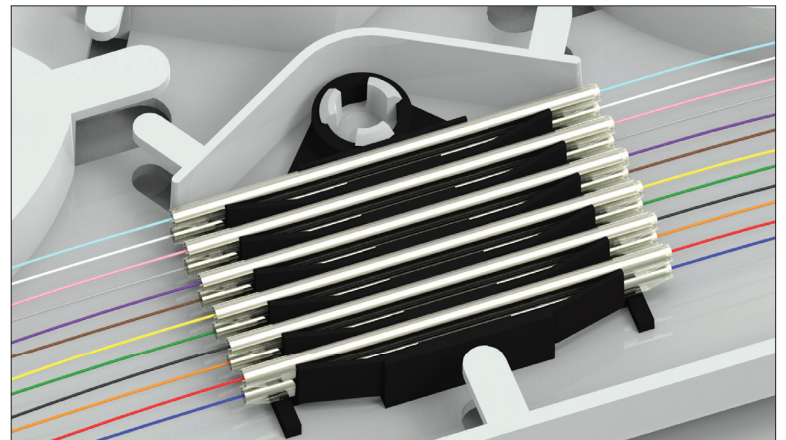


Routing for Incoming Fiber

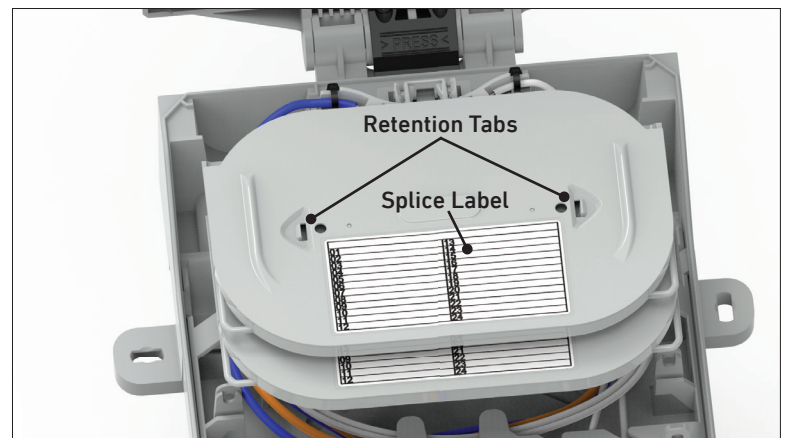


Routing for Outgoing Fibers

- 49** Splice the incoming fibers to the outgoing fibers per your accepted company practices and secure the splices to the splice block(s) of the splice tray.



- 50** Apply the splice label(s) onto the splice tray cover(s) and install the cover(s) onto the splice tray(s). Press down on the cover to ensure the retention tabs of the splice tray are engaged and the cover is secured.

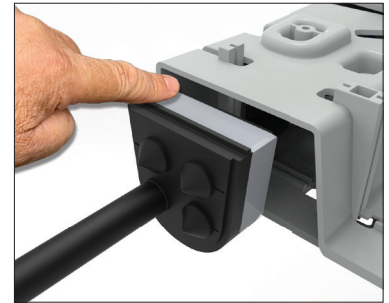
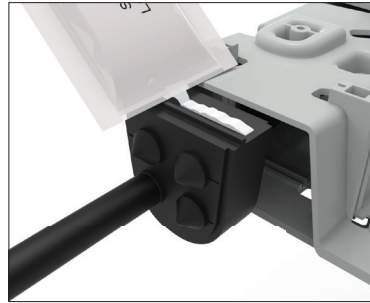


INSTALLING CROSS-CONNECT ORGANIZER INTO WALL BOX

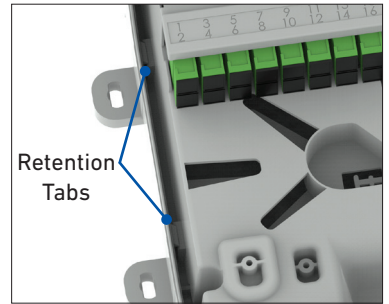
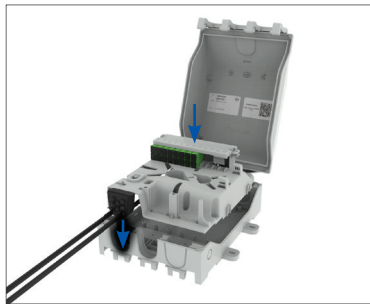
- 51** Lubricate the outer surface of the grommet with the silicone lubricant provided with the grommet. Spread the lubricant evenly around the outer surface of the grommet.

CAUTION

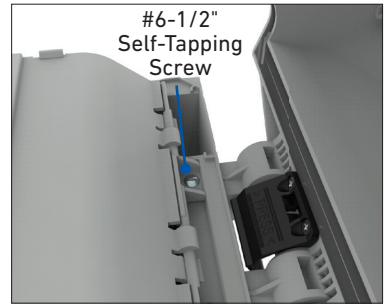
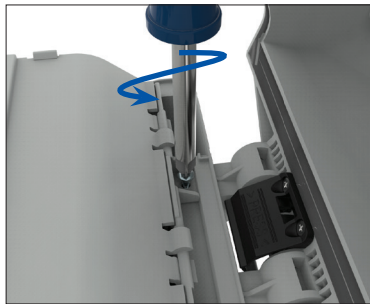
Only use the silicone lubricant provided. Other lubricants can cause the grommet not to seal properly in the wall box.



- 52** Insert the cable grommet into the pocket of the cable entry port while placing the organizer into the base of the wall box. Make sure the retention tabs on the base are engaged and the organizer is secured to the base.



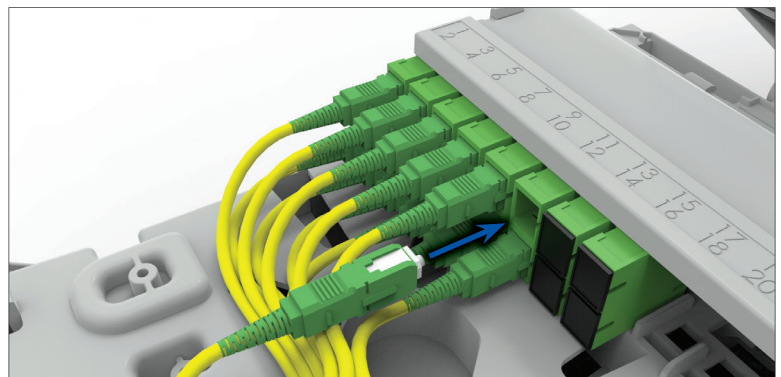
- 53** Secure the cross-connect organizer to the base with a #6-1/2" self-tapping screw (not provided).



SECURING OUTGOING CABLES FOR CROSS-CONNECT APPLICATIONS

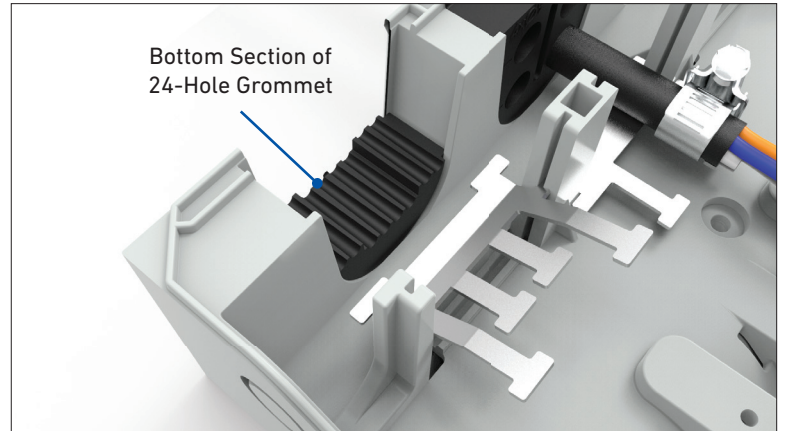
- 54** Remove the covers from the front of the adapters and insert the connectors of the outgoing connectorized drop cables or the jumper cables into the adapters.

NOTE: Follow your standard company practice for cleaning and installing the connectors.



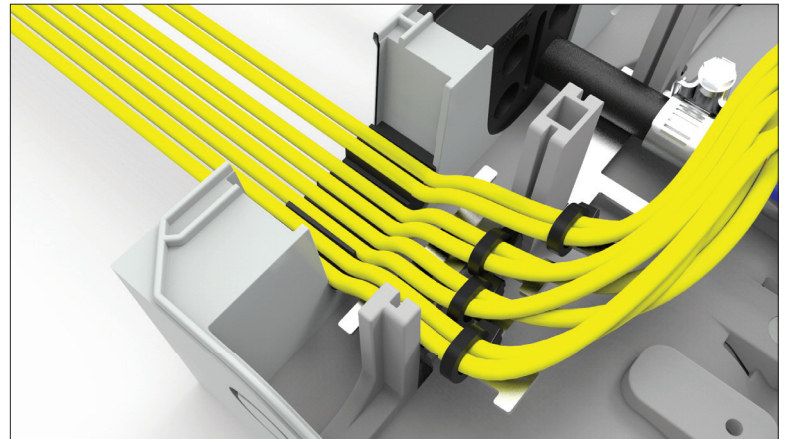
- 55** Apply silicone lubricant to the outer surface of the bottom section of the 24-hole grommet and insert it into the pocket of the cable entry port. Install a cable restraint bracket onto the retention posts of the organizer as shown.

NOTE: Do not apply silicone lubricant to the slotted surface of the grommet section.

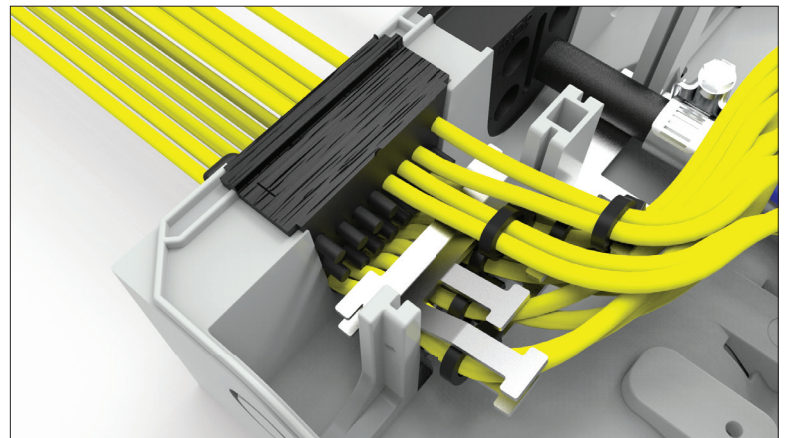


- 56** Route the outgoing cables to the cable port and insert the cables and/or plugs into the slots of the installed grommet section in an organized manner. Secure the cables to the cable restraint bracket with the cable tie wraps.

NOTE: Two cables should be secured to each leg of the cable restraint bracket.



- 57** Repeat the process described in **Steps 55 and 56** for each grommet section until the grommet has been completely assembled and all the outgoing cables have been secured.

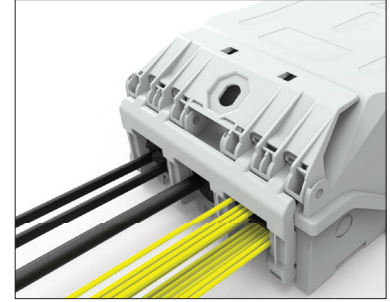
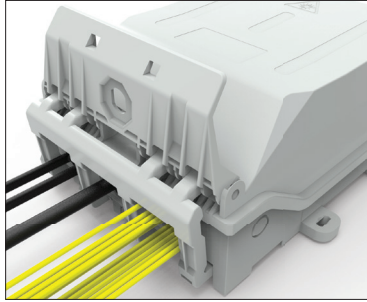


SECURING COVER

- 58** Hinge the cover closed and ensure the retention tabs are engaged in the base. Hand-tighten the Torx head security screw with a T-20 Torx driver until it is fully installed.

CAUTION

Do not use power tools to tighten down the Torx head security screw. Doing so can cause damage to the screw, nut, or wall box.



APPENDIX A

COYOTE DEN3 Wall Box Kits

| Catalog Number | Description |
|----------------|--|
| COYDEN3-SPL | COYOTE DEN3 Wall Box with Direct Splice Organizer – Includes (4) COYOTE DEN 24 CT Low-Profile Flip Splice Tray Kits, (1) 4-Hole Grommet Kit: (2 Holes) 0.38" – 0.46" (9.6 – 11.7 mm) & (2 Holes) 0.46" – 0.51" (11.7 – 13.0 mm), (1) 4-Hole Grommet Kit: (4 Holes) 0.30" – 0.38" (7.6 – 9.6 mm), (1) 24-Hole Grommet Kit: (24 Holes) 0.07" – 0.12" (1.8 – 3.0 mm), & (1) Small Parts Bag |
| COYDEN3-XC | COYOTE DEN3 Wall Box with Cross-Connect Organizer – Includes (2) COYOTE DEN 24 CT Low-Profile Flip Splice Tray Kits, (1) 4-Hole Grommet Kit: (2 Holes) 0.38" – 0.46" (9.6 – 11.7 mm) & (2 Holes) 0.46" – 0.51" (11.7 – 13.0 mm), (1) 4-Hole Grommet Kit: (4 Holes) 0.30" – 0.38" (7.6 – 9.6 mm), (1) 24-Hole Grommet Kit: (24 Holes) 0.07" – 0.12" (1.8 – 3.0 mm), & (1) Small Parts Bag |

Grommet Kits for COYOTE DEN3 Wall Boxes

| Catalog Number | Description |
|----------------|--|
| 80814377 | 24-Hole Grommet Kit for Cable Diameter Range 0.07" – 0.12" (1.8 mm – 3.0 mm) |
| 80814378 | 12-Hole Grommet Kit for Cable Diameter Range 0.14" – 0.22" (3.6 mm – 5.6 mm) |
| 80814379 | 8-Hole Grommet Kit for Cable Diameter Range 0.22" – 0.30" (5.6 mm – 7.6 mm) and Flat Drop |
| 80814380 | 4-Hole Grommet Kit for Cable Diameter Range 0.30" – 0.38" (7.6 mm – 9.6 mm) |
| 80814381 | 4-Hole Grommet Kit for Cable Diameter Range 0.38" – 0.46" (9.6 mm – 11.7 mm) and 0.46" – 0.51" (11.7 mm – 13.0 mm) |

Splice Tray Accessory Kits for COYOTE DEN3 Wall Boxes

| Catalog Number | Description |
|----------------|--|
| 80808187 | Heat Shrink Splice Protector Kit – Includes (12) 40 mm Single Fusion |
| 8004095 | Heat Shrink Splice Protector Kit – Includes (50) 40 mm Single Fusion |
| 8003509 | Heat Shrink Splice Protector Kit – Includes (12) 60 mm Single Fusion |
| 8003717 | Heat Shrink Splice Protector Kit – Includes (50) 60 mm Single Fusion |
| 8003490 | Felt Tape Kit – Includes (6) 9" Long Buffer Tube Felt Strips |

APPENDIX B

COYOTE® Cross-Connect Accessory Kits

| Catalog Number | Description |
|-----------------------|---|
| 80813595 | Adapter Kit – Includes (8) SC/APC Duplex Adapters |
| 80813596 | Adapter Kit – Includes (8) SC/UPC Duplex Adapters |
| 80813599 | Adapter Kit – Includes (8) LC/APC Quad Adapters |
| 80813600 | Adapter Kit – Includes (8) LC/UPC Quad Adapters |
| 800013979 | Fiber Pigtail Kit – Includes (2) 1.5 m SC/APC 900 µm Color Coded Pigtails |
| 800014109 | Fiber Pigtail Kit – Includes (2) 1.5 m SC/UPC 900 µm Color Coded Pigtails |
| 800013980 | Fiber Pigtail Kit – Includes (3) 1.5 m SC/APC 900 µm Color Coded Pigtails |
| 800014110 | Fiber Pigtail Kit – Includes (3) 1.5 m SC/UPC 900 µm Color Coded Pigtails |
| 800015055 | Fiber Pigtail Kit – Includes (4) 1.5 m SC/APC 900 µm Color Coded Pigtails |
| 80812558 | Fiber Pigtail Kit – Includes (4) 1.5 m SC/UPC 900 µm Color Coded Pigtails |
| 80812983 | Fiber Pigtail Kit – Includes (2) 1.5 m LC/APC 900 µm Color Coded Pigtails |
| 80812985 | Fiber Pigtail Kit – Includes (2) 1.5 m LC/UPC 900 µm Color Coded Pigtails |
| 80812559 | Fiber Pigtail Kit – Includes (4) 1.5 m LC/APC 900 µm Color Coded Pigtails |
| 80812560 | Fiber Pigtail Kit – Includes (4) 1.5 m LC/UPC 900 µm Color Coded Pigtails |
| COYSP1X2 ¹ | COYOTE Bare Fiber Splitter – 1x2 |
| COYSP1X4 ¹ | COYOTE Bare Fiber Splitter – 1x4 |
| COYSP1X8 ¹ | COYOTE Bare Fiber Splitter – 1x8 |
| COYSP1X2SCA | COYOTE Pre-Connectorized Splitter – 1x2 SC/APC |
| COYSP1X4SCA | COYOTE Pre-Connectorized Splitter – 1x4 SC/APC |
| COYSP1X8SCA | COYOTE Pre-Connectorized Splitter – 1x8 SC/APC |

¹ Add Suffix: -S for 250µm Output Legs



GLOBAL HEADQUARTERS
660 BETA DRIVE
CLEVELAND, OH 44143

+1 440 461 5200
INFO@PLP.COM
PLP.COM