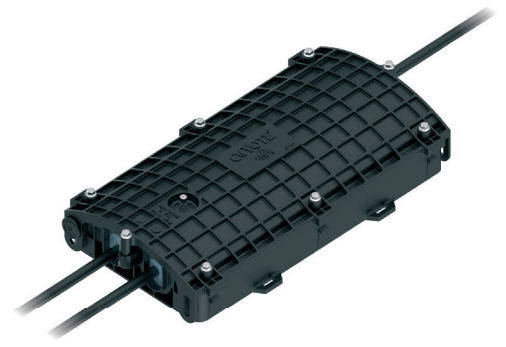




COYOTE® IN-LINE RUNT CLOSURE

INSTALLATION INSTRUCTIONS



IMPORTANT SAFETY INFORMATION

READ AND COMPLETELY UNDERSTAND ALL INSTRUCTIONS BEFORE INSTALLING PRODUCT. FAILURE TO FOLLOW THESE INSTRUCTIONS MAY RESULT IN PERSONAL INJURY OR DEATH.

This product is intended for use by trained technicians only. This product should not be used by anyone who is not familiar with and not trained to use it. When working in the area of energized lines, extra care should be taken to prevent accidental electrical contact. Be sure to wear proper safety equipment per your company protocol. These instructions are not intended to supersede any company construction or safety standards. These instructions are offered only to illustrate safe installation for the individual. PLP products are intended for the specified application only. Do not modify this product under any circumstances. Do not reuse or reinstall any PLP product unless that capability is expressly indicated in the product's Installation Instructions. For proper performance and personal safety, be sure to select the proper PLP product before installation. PLP products are precision devices. To ensure proper performance, they should be stored in cartons under cover and handled carefully.

PACKAGE COMPONENTS



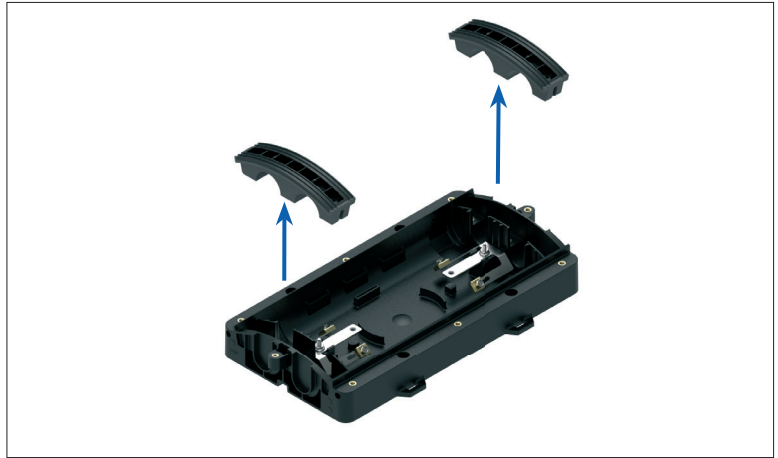
1. Base with End Caps - Standard Base Shown (1)
2. Cover (1)
3. Small Parts Bag (1)
4. Grommet Kit - Includes 4 Grommets (1)
5. Torque Limiting Tool - Included in Flame Retardant Closure Kits Only (1)

Tools Required

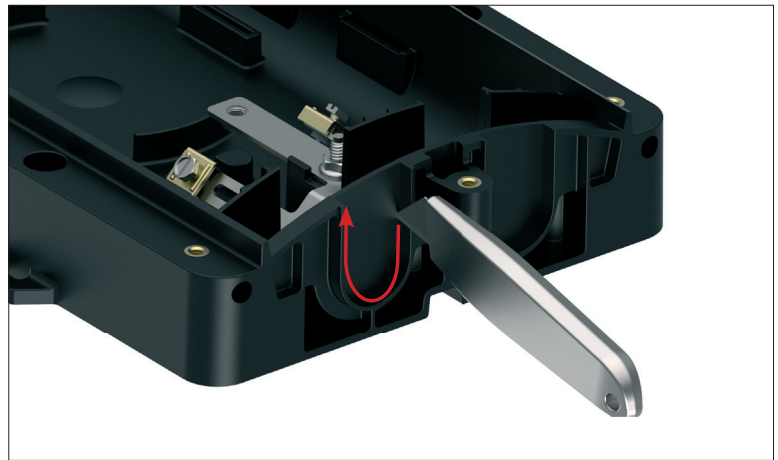
- 3/8" & 7/16" Can wrench or socket wrench
- Side Cutters
- Snips
- Fiber Optic Cable Opening Tools
- Utility knife
- Pliers

GENERAL BASE PREPARATION

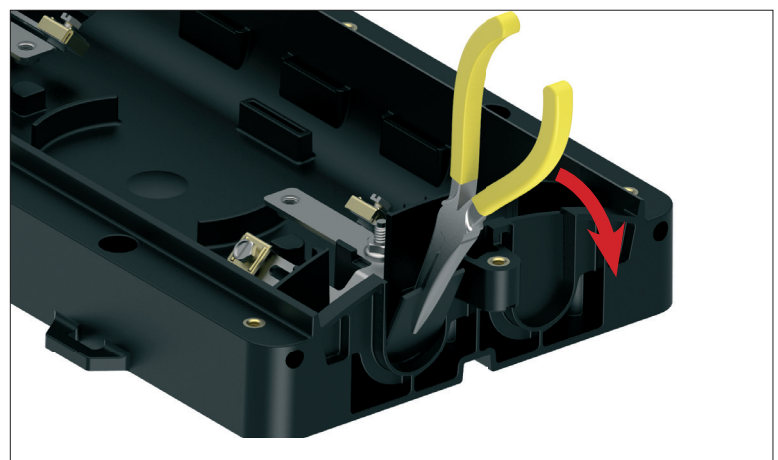
- 1 Remove the end plate caps from the base.



- 2 Determine which cable port tabs will need to be removed from the base and score the edges of each tab several times with a utility knife.

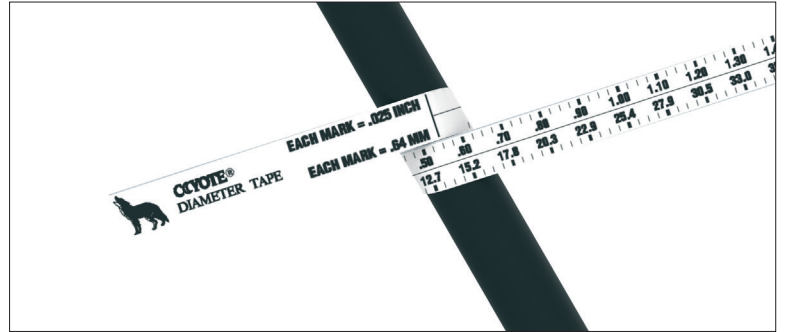


- 3 Remove each tab by pulling the tab outwards from the base with pliers.

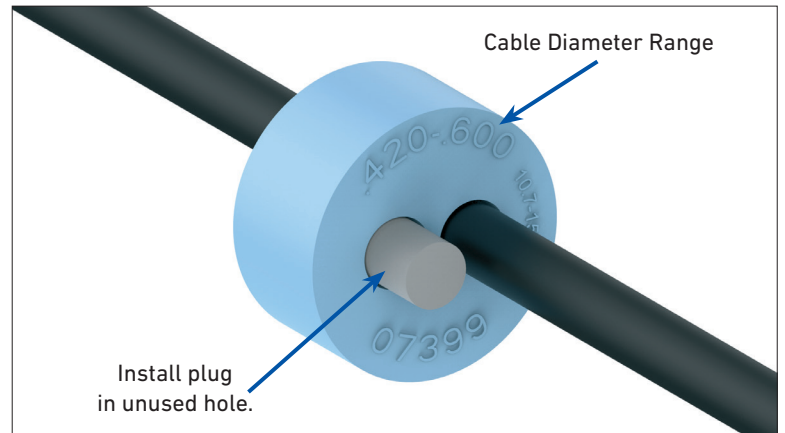


FEED AND BRANCH CABLE PREPARATION

- 4 Measure the cable to determine the diameter and hole location to use in the grommet.



- 5 If using cut cable, insert the cable through the grommet. If your application requires express/balloon/ring cut cables, see Step 7 for the grommet slitting procedure.

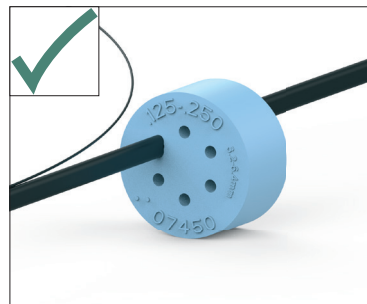


- 6 **INSTALLING FIGURE 8 STYLE CABLES AND CABLES WITH TRACER WIRES**
Remove the tracer wire or ground wire from the portion of the cable that will be positioned in the grommet and insert the cable into the grommet.

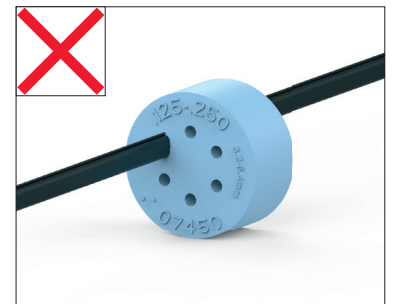
CAUTION

Failure to separate tracer wires or ground wires from the cable or removing burrs left on the cable may allow water to migrate through the cable entrance of the grommet.

Cable with Tracer Wire

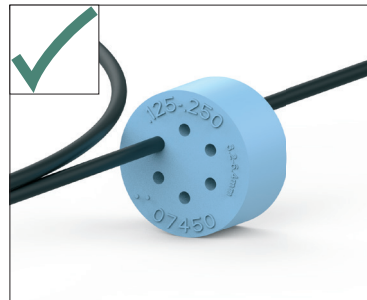


Correct Installation

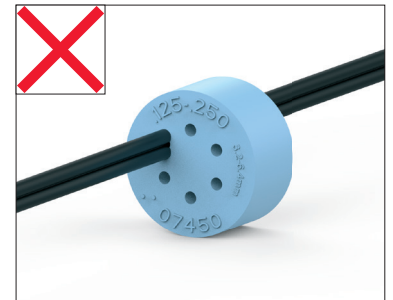


Incorrect Installation

Cable with Figure 8 Cable



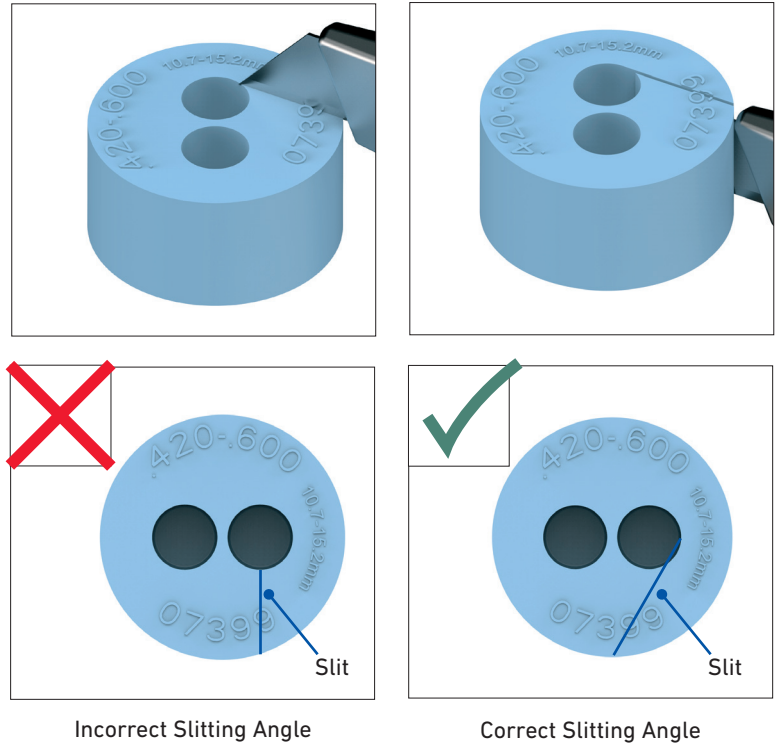
Correct Installation



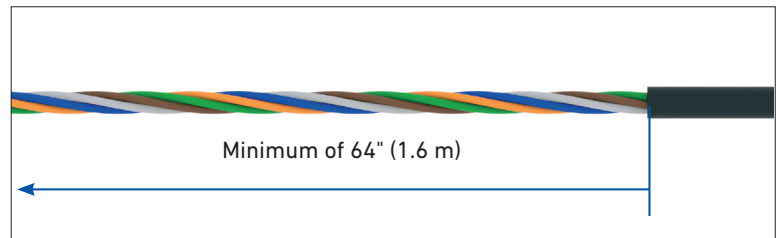
Incorrect Installation

- 7 GROMMET SLITTING:** If slitting is required, lay the grommet on a stable flat surface. Position the utility knife with the cutting edge against the top surface and cut through the grommet. Consult the grommet chart for slitting locations of all grommets.

NOTE: Use a pen to sketch slitting lines on the top surface of the grommet prior to cutting.



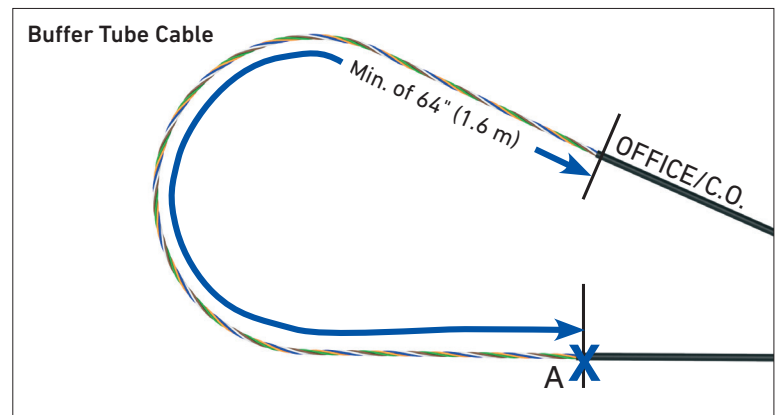
- 8** Prepare the feed, branch, and/or drop cable(s) for cut applications.



Minimum Sheath Opening for Cut Cable Applications	
64"	1.6 m

NOTE: Leave about 8" (203 mm) of the cable strength member.

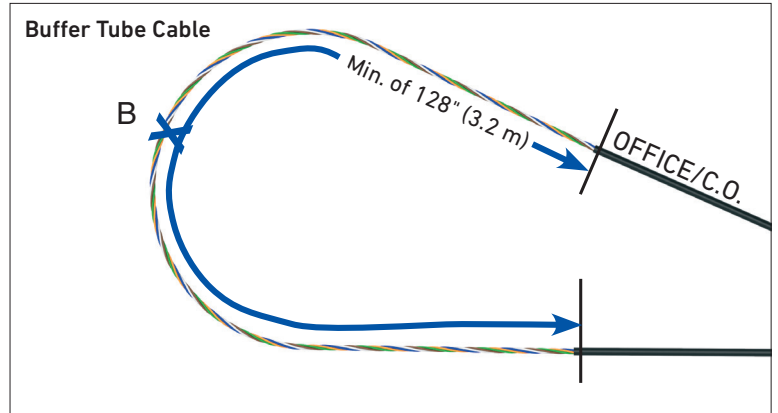
- 9a** Prepare the feed cable for mid-sheath applications (Express/Balloon/Ring Cut).



For Applications Where Fiber is Dedicated to the Splice Point		
Configuration	Cut Location	Sheath Opening
Unitube/Ribbon Expressed (Mid-Sheath)	A	Minimum of 64" (1.6 m)

NOTE: Leave about 8" (203 mm) of the cable strength member.

- 9b** Prepare the feed cable for mid-sheath applications (Express/Balloon/Ring Cut).

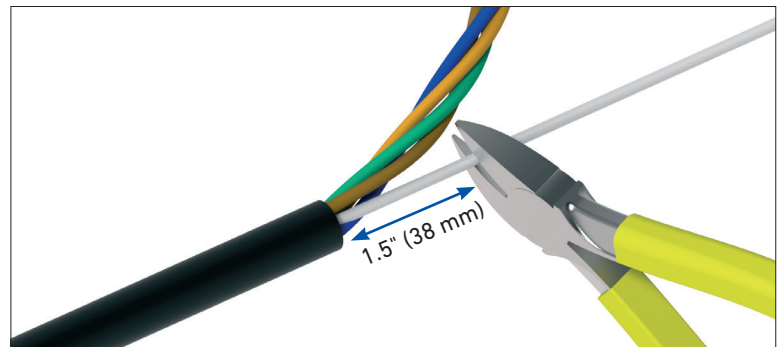


For Applications Where Fiber is NOT Dedicated to the Splice Point

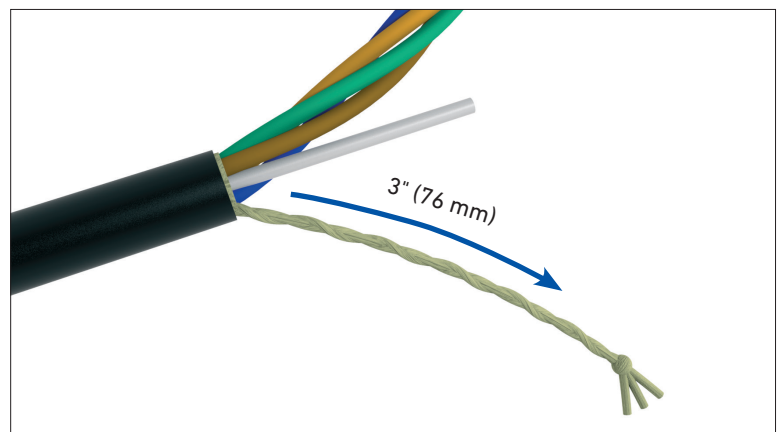
Configuration	Cut Location	Sheath Opening
Unitube/Ribbon Expressed (Mid-Sheath)	B	Minimum of 128" (3.2 m)

NOTE: Leave about 8" (203 mm) of the cable strength member.

- 10** Trim the cable strength members 1.5" (38 mm) from the cable sheath opening.



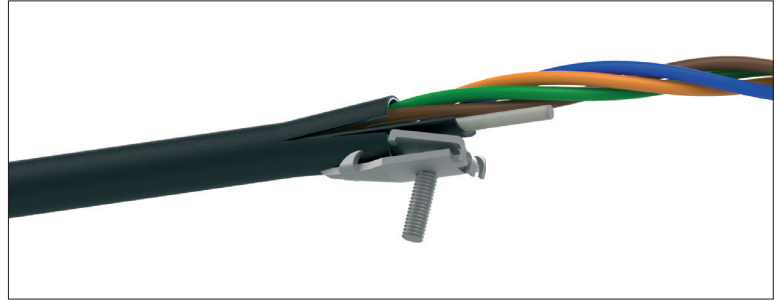
- 11** Braid roughly 3" (76 mm) of the aramid yarn and knot the end of it.



PREPARING SHIELDED CABLE

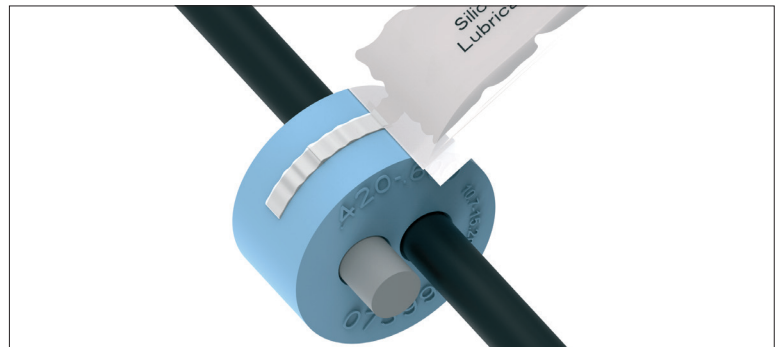
- 12 Install the shield connector on the cable.

NOTE: Follow your standard company practice when applying the shield connector to the cable. PLP recommends using a Fiber Optic Shield Connector (**Catalog Number: 80803989**) for shielded cable applications.

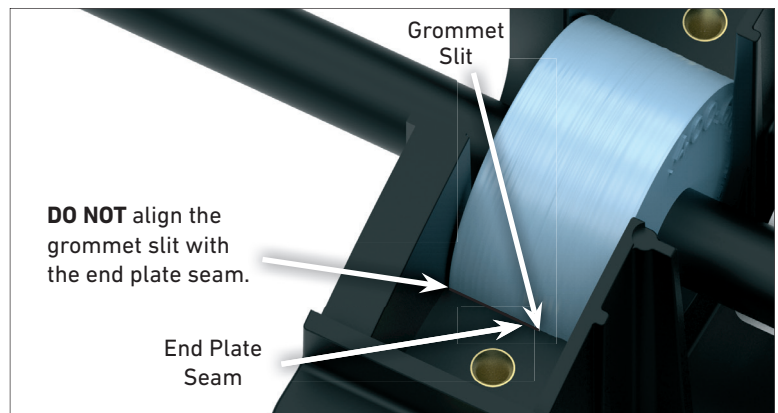
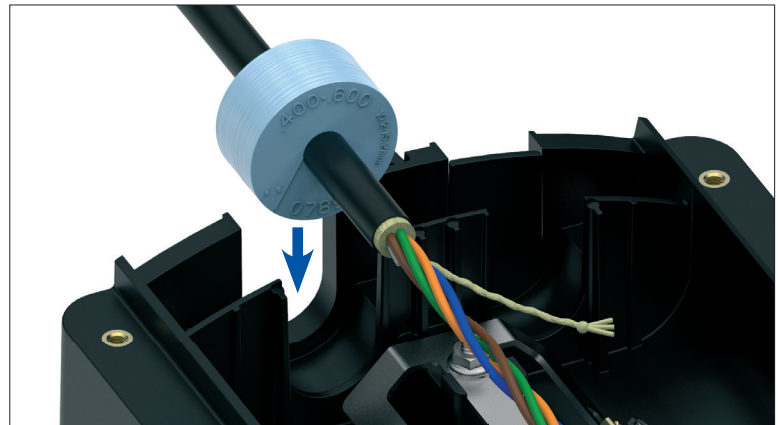


CABLE GROMMET INSTALLATION

- 13 Lubricate the outer surface of each grommet. Spread the lubricant evenly around the outer surface.



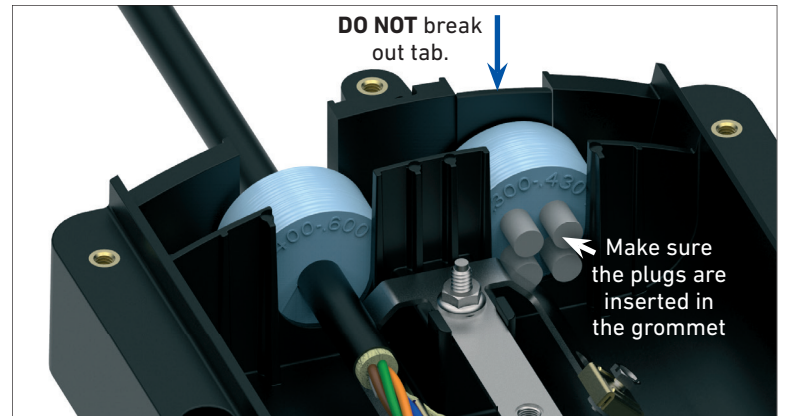
- 14a Position the grommets in the slots of the base.



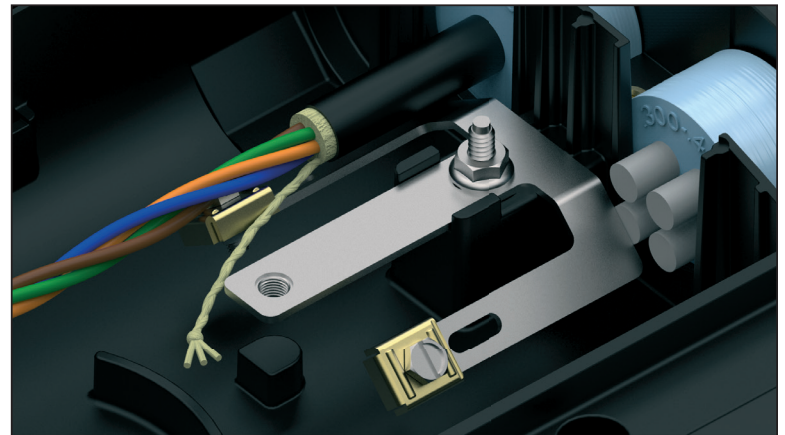
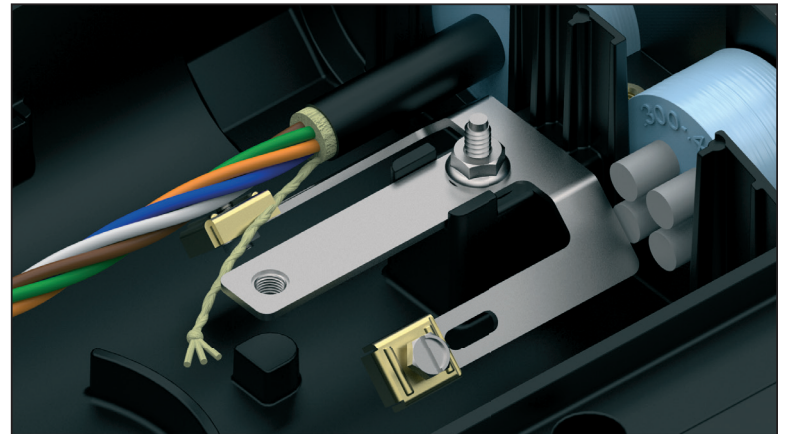
14b FOR IN-LINE APPLICATIONS

When only one cable port is being used at an end of the closure, **install a grommet with plugs inserted in it, in the unused cable port.** This will balance the load of the end plate cap.

NOTE: It is not necessary to break out the tab of the unused port.



15 Bend each leg of the cable restraint brackets upward until they contact the cable(s).

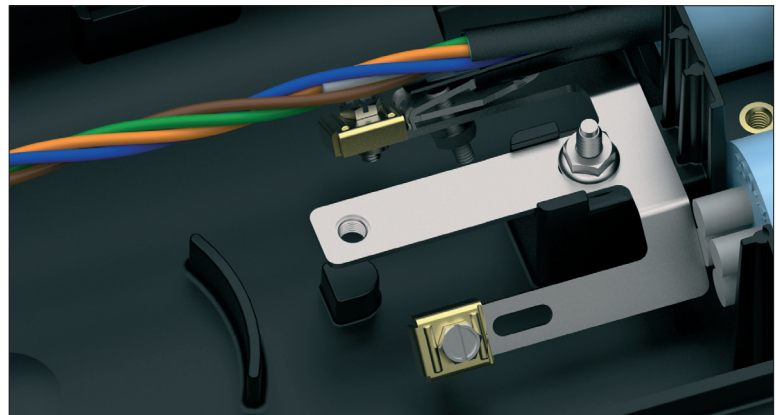
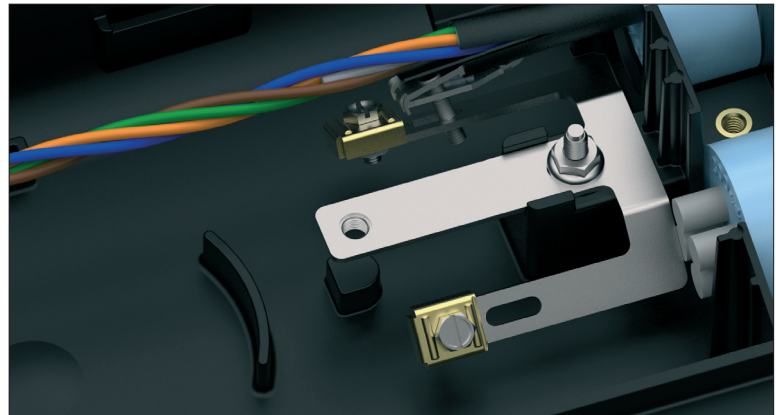


16 FOR SHIELDED CABLES

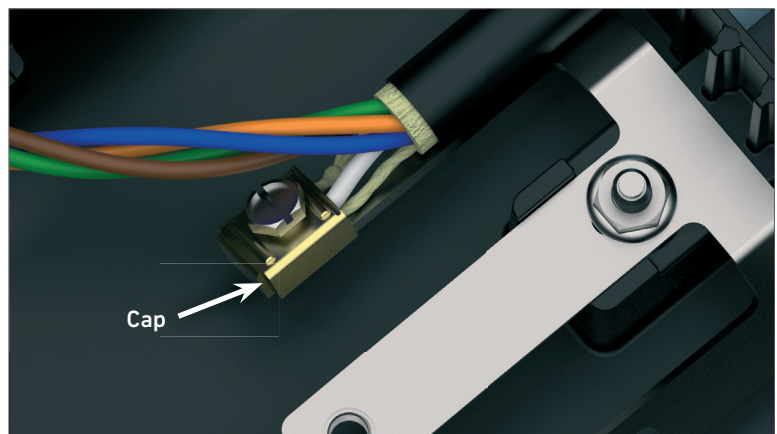
Install the stud of the shield connector through the slot in the strength member bracket in the closure base.

Secure the shield connector to the strength member bracket with a nut.

NOTE: A combination wrench may be needed to properly tighten the nut to secure the shield connector to the bracket.

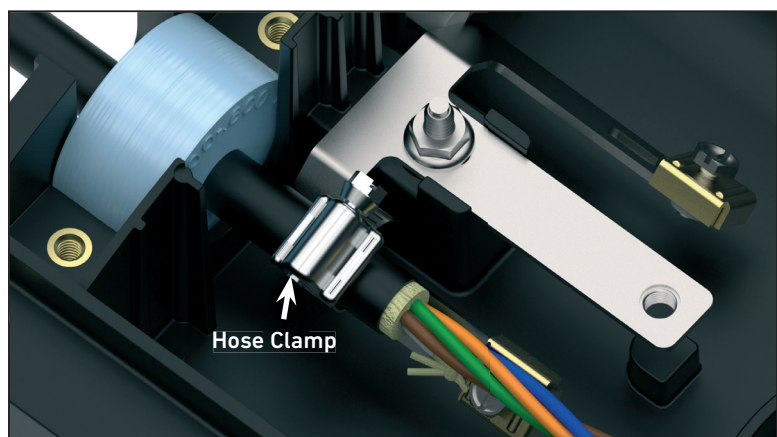


- 17 Position the cable strength member under the cap of the cable restraint bracket. Wrap the braided aramid yarn around the screw and under the cap, then tighten the cap down.



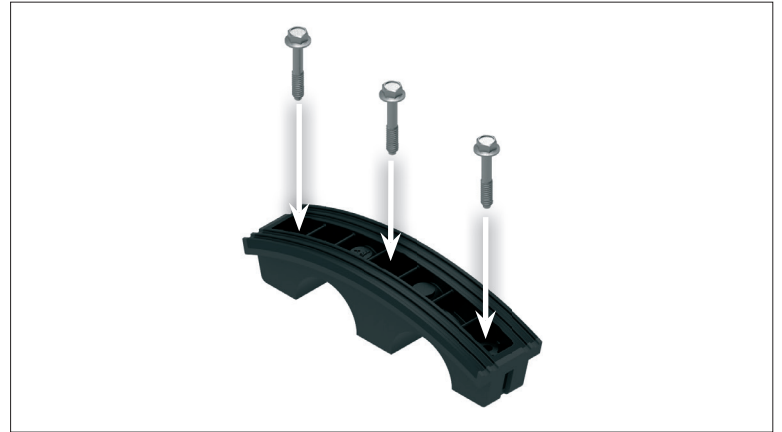
- 18 Position the grommet 7/8" (22 mm) away from the cable sheath opening.

NOTE: Cables can be prepared and secured to brackets outside of the closure footprint for easier application.

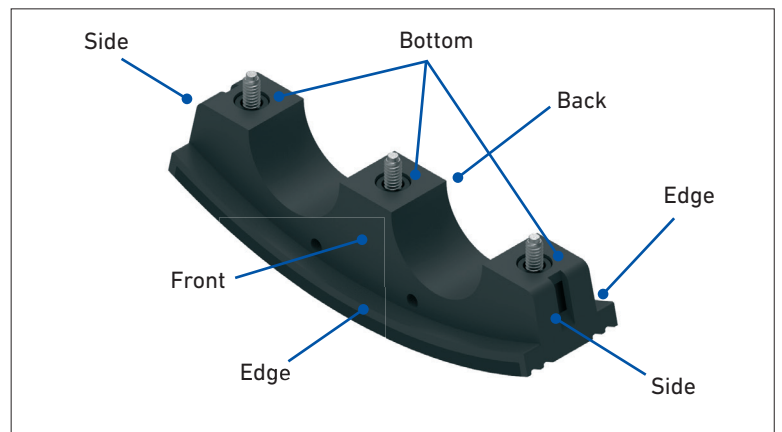


END PLATE CAP INSTALLATION

- 19 Screw the hex head cap bolts into each end plate cap.



- 20 Lubricate the end plate caps with the silicone lubricant that is provided on the areas indicated.

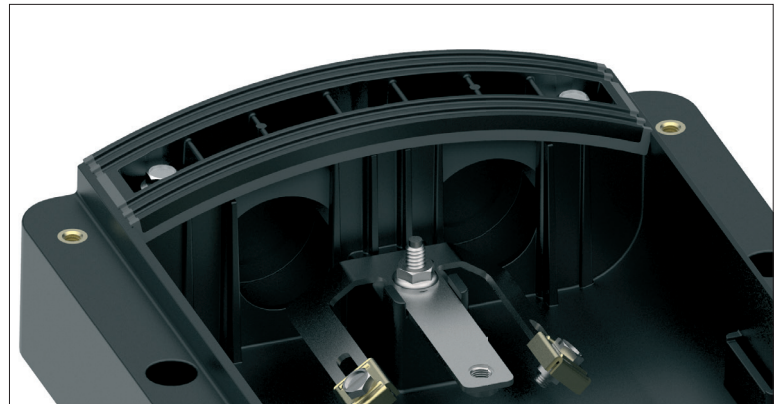
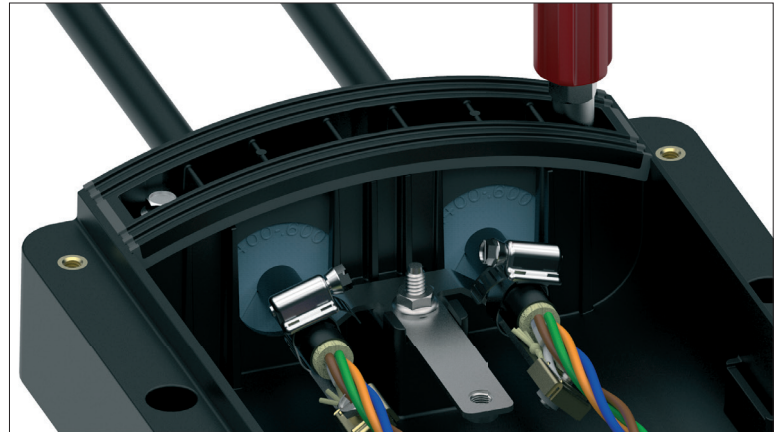


- 21a** Install the end plate caps in the pockets of the base. Tighten the bolts of each end plate cap evenly until the end plate cap is fully sealed.

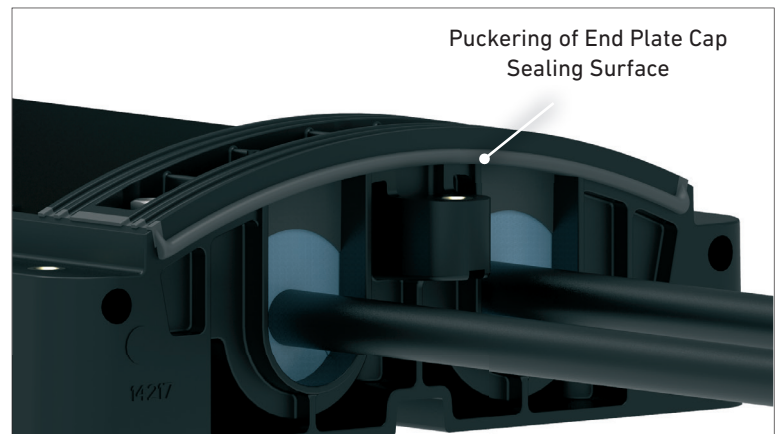
CAUTION

DO NOT USE POWER TOOLS TO TIGHTEN THE BOLTS.

NOTE: When both cable ports are not being used at an end of the closure, it is not necessary to install grommets under the blank end plate cap.

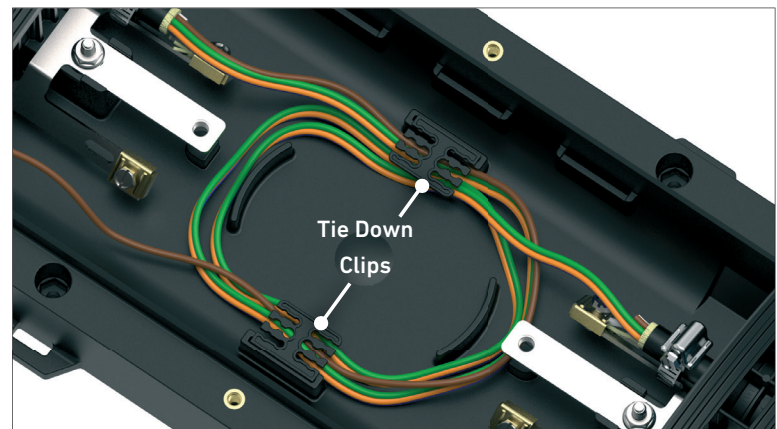


- 21b** Check to see if the end plate caps are fully seated. The caps will be fully seated when the sealing surface puckers.

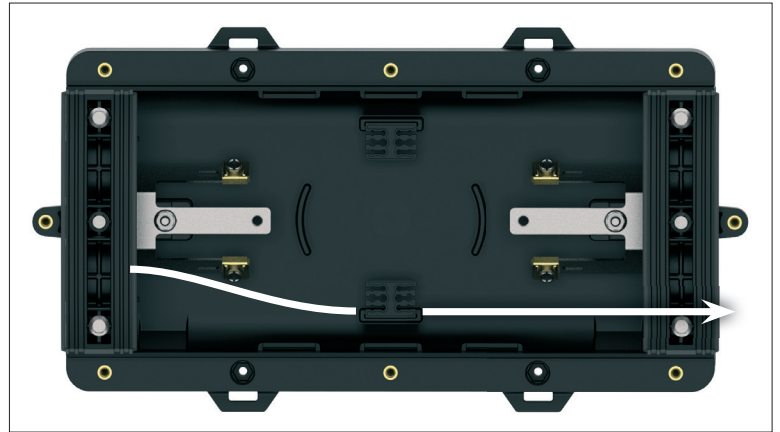


BUFFER TUBE ROUTING

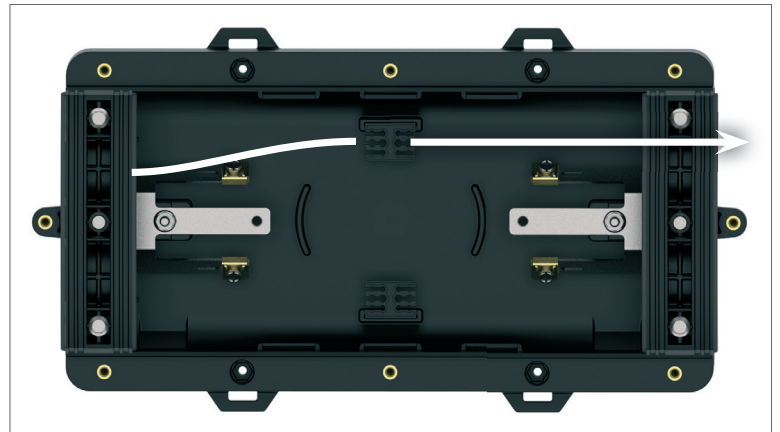
- 22** Install the tie down clips in the bottom of the base and route the expressed buffer tubes of the feed cable under the clips as shown.



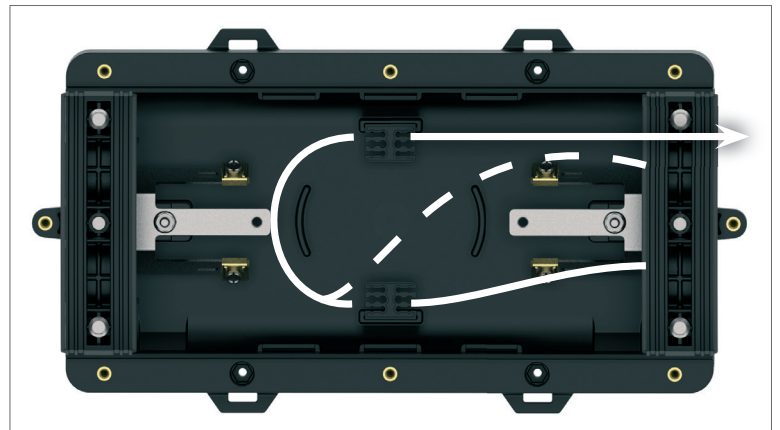
- 23 Route the feed buffer tube(s) with the fibers to be spliced under the tie down clip as shown.



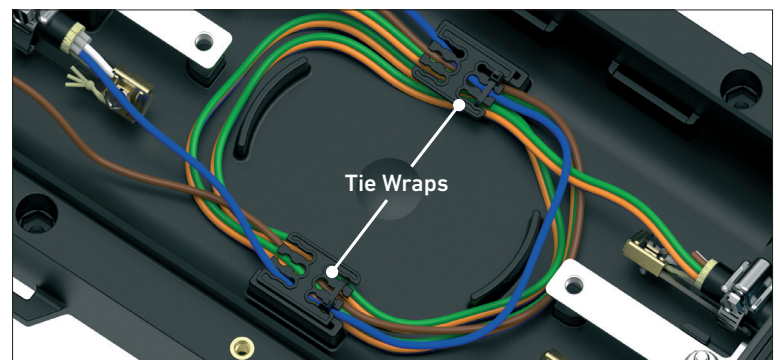
- 24 Route the branch/drop buffer tube(s) under the tie down clips as shown.



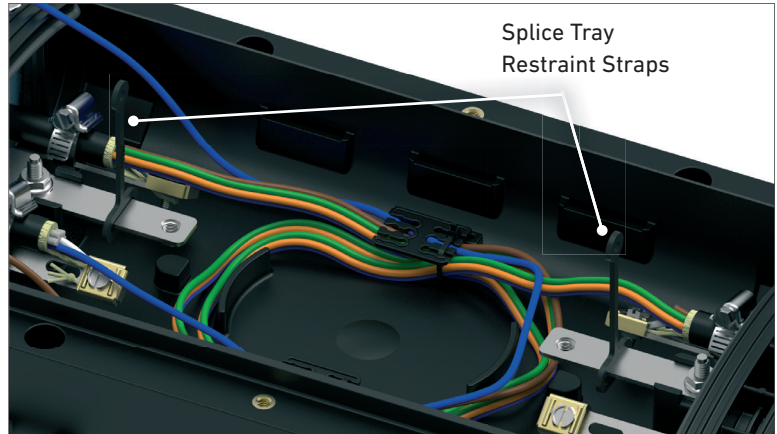
OR



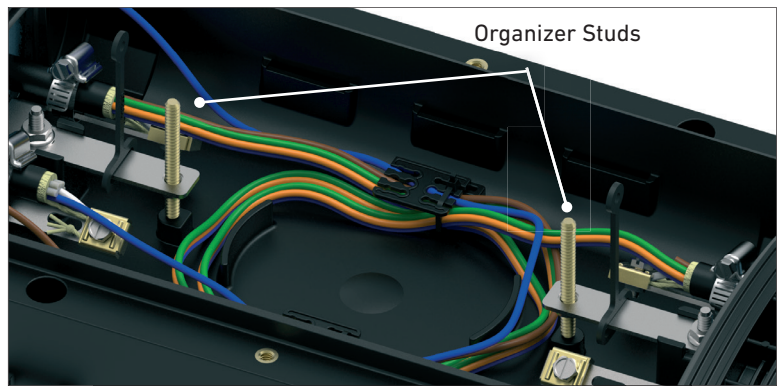
- 25 Secure all the buffer tubes under the tie down clips with the tie wraps.



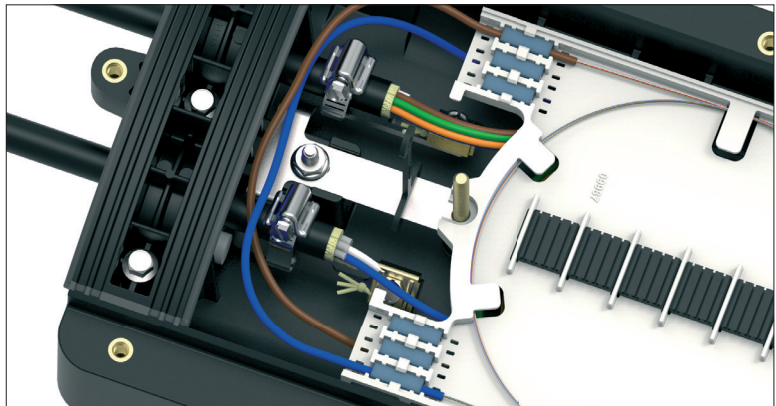
- 26 Install the splice tray restraint straps onto the cable restraint brackets.



- 27 Install the organizer studs into the cable restraint brackets.

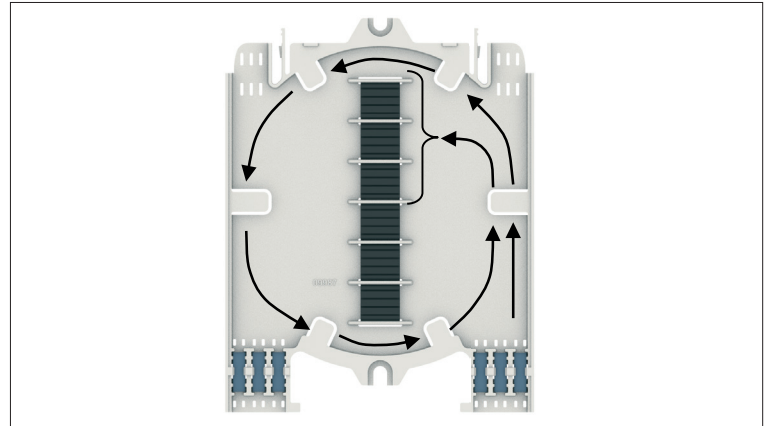


- 28 Place the splice tray onto the organizer studs and route the buffer tubes to the splice tray.

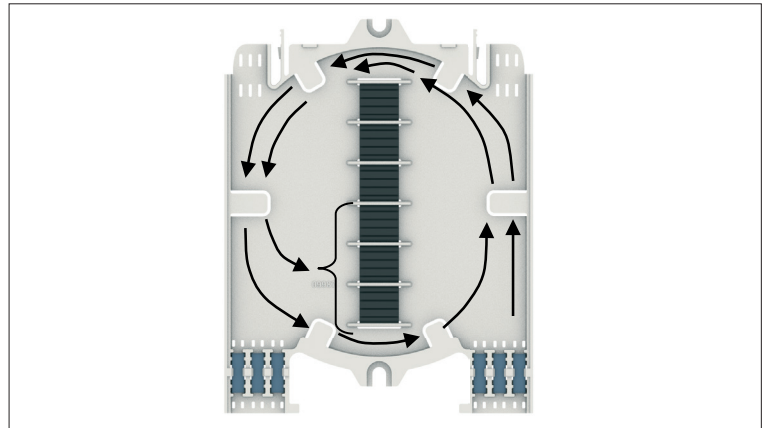


SPLICE TRAY MANAGEMENT

- 29 Route INCOMING fibers in splice tray.

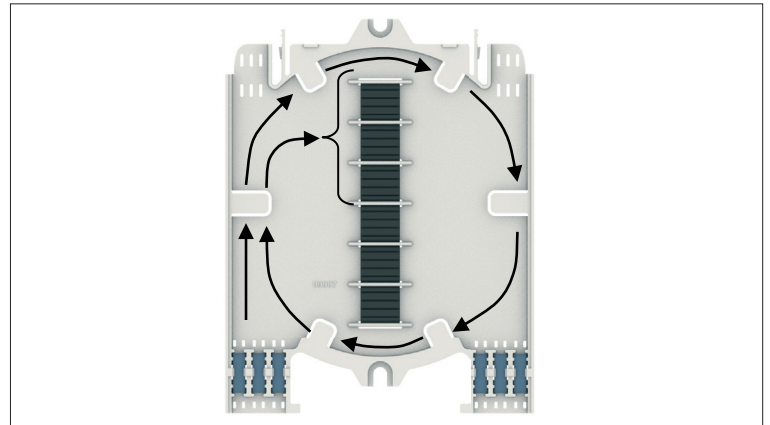


Fibers 1 - 12

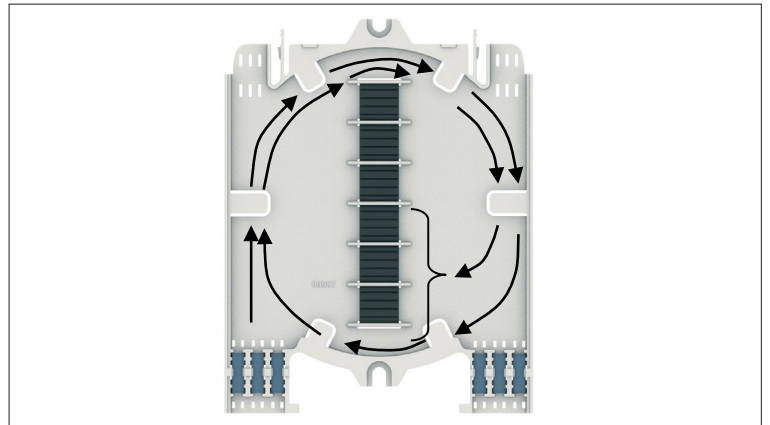


Fibers 13 - 24

- 30 Route OUTGOING fibers in splice tray.



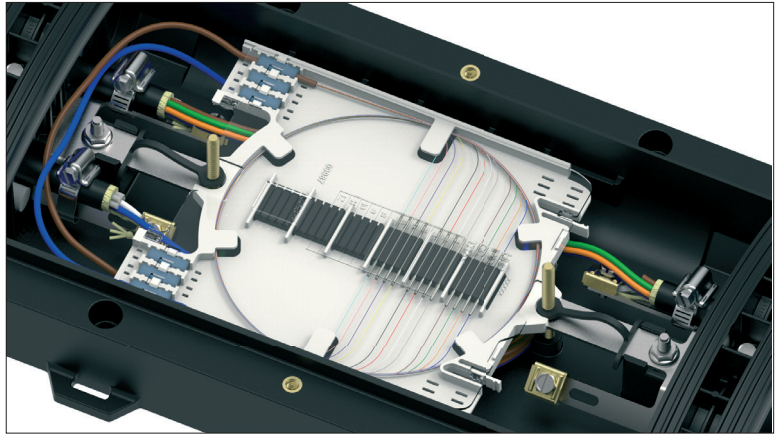
Fibers 1 - 12



Fibers 13 - 24

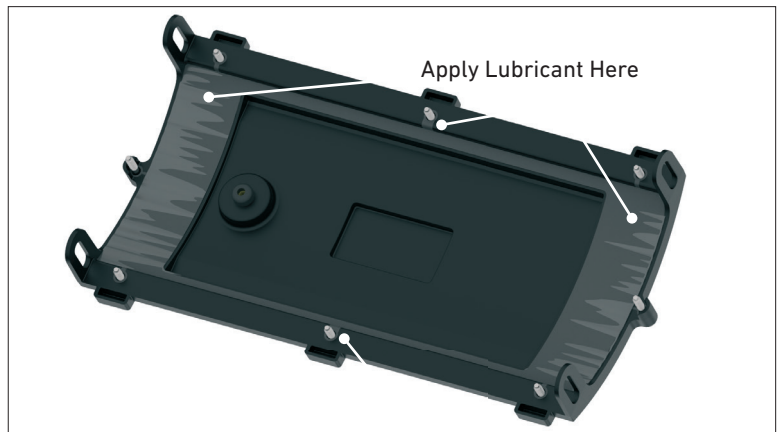
31 Splice fibers per your accepted company practice.

32 Secure splice tray(s) with the splice tray restraint straps.

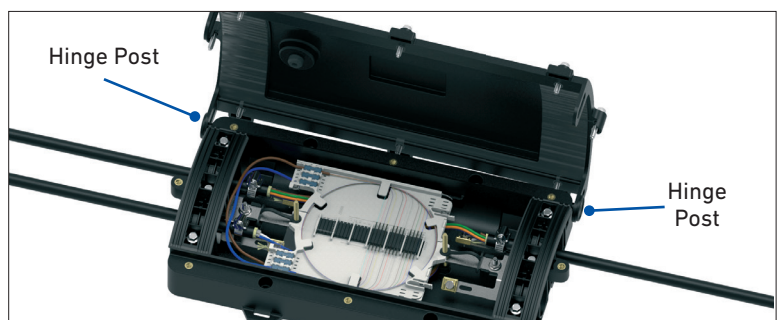
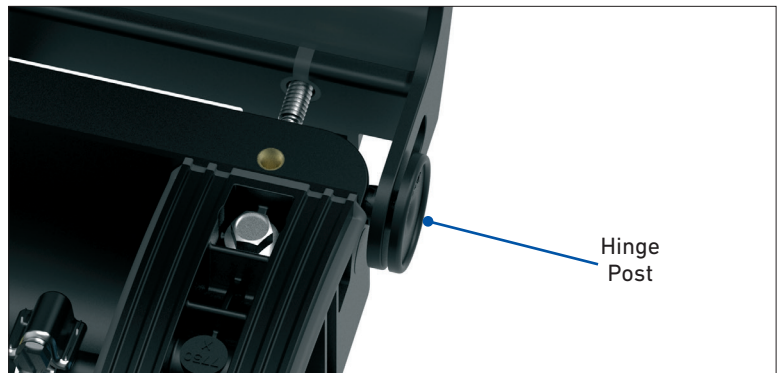


COVER INSTALLATION

33 Lubricate the cover gasket with the silicone lubricant provided.



34 Attach the cover to the base with the hinge posts.



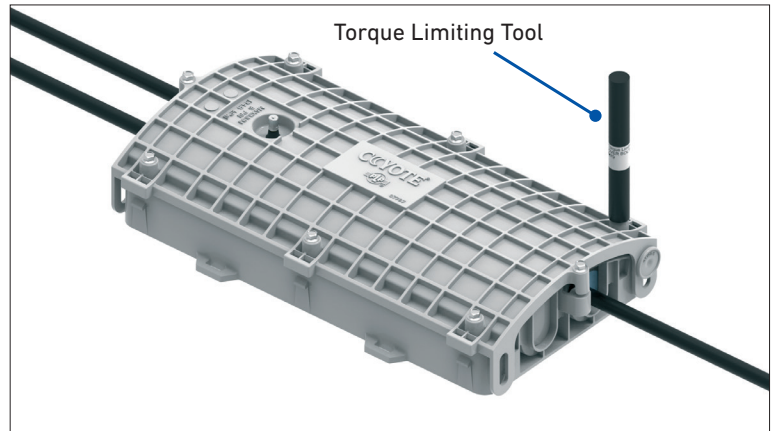
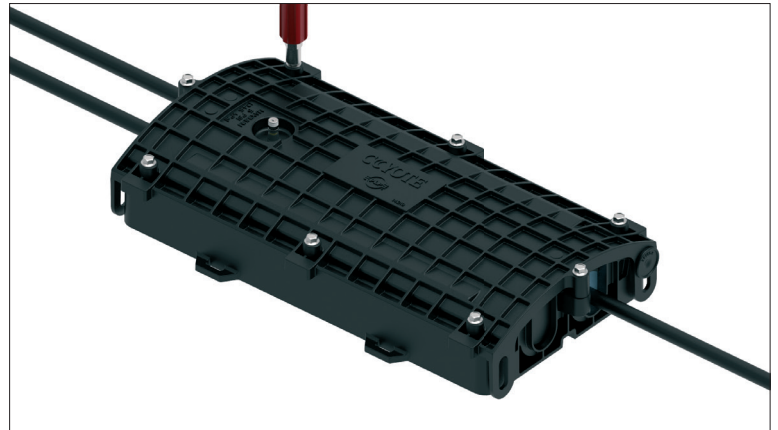
35

Secure the cover to the base by hand tightening the hex head bolts.

CAUTION

DO NOT USE POWER TOOLS TO TIGHTEN THE BOLTS.

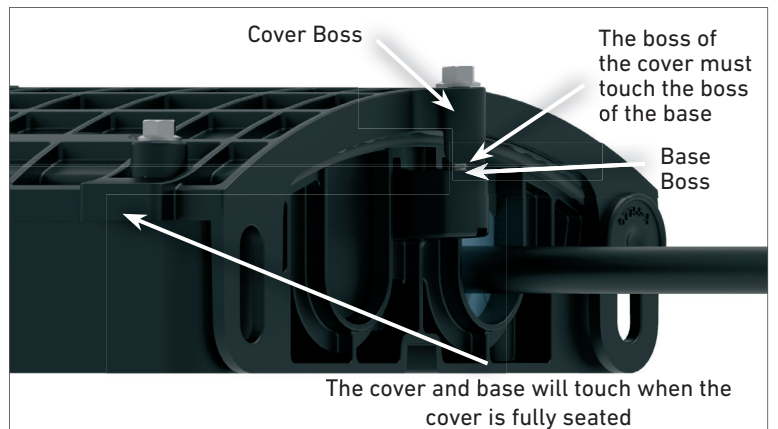
NOTE: The torque limiting tool must be used to tighten the hex head bolts of a flame retardant closure cover.



36

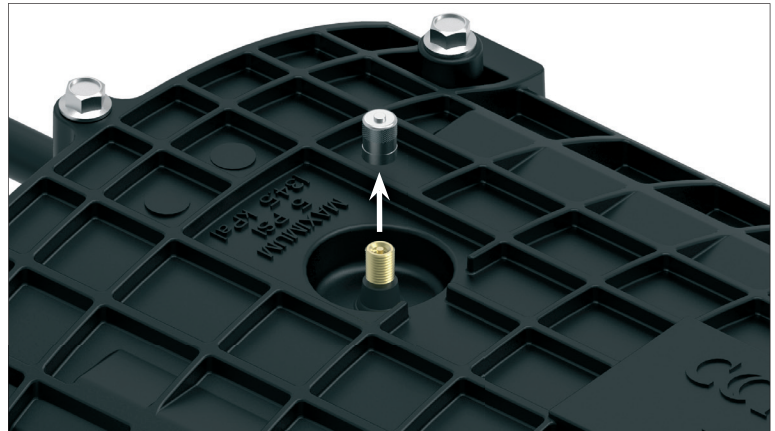
Retighten all of the bolts to ensure the cover is fully seated on the base.

NOTE: The torque limiting tool must be used to tighten the hex head bolts of a flame retardant closure cover.

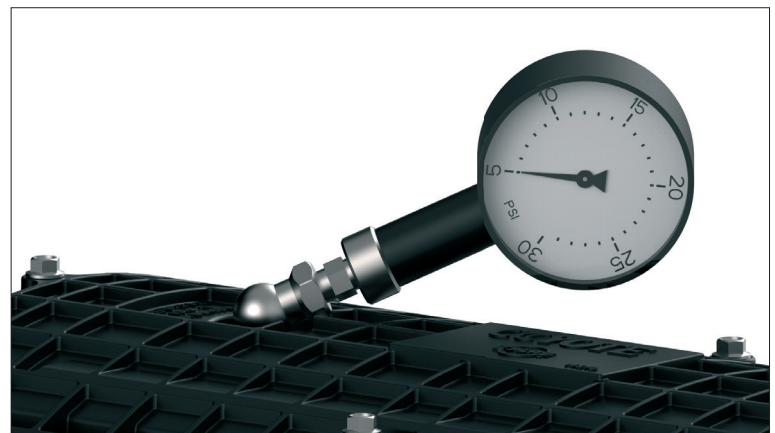


FLASH TEST PROCEDURE

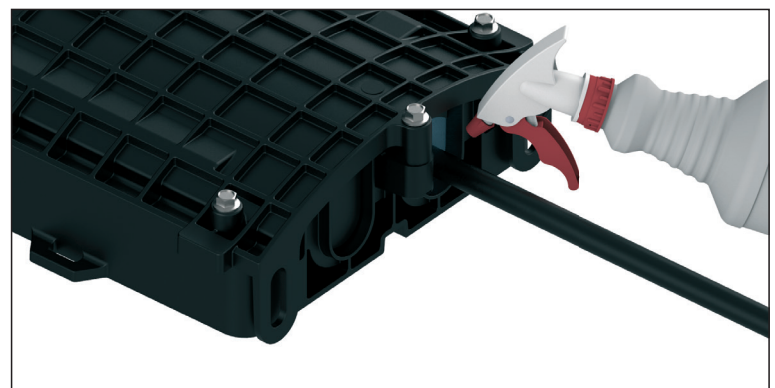
- 37** Remove the cap from the air valve of the cover.



- 38** Pressurize the closure up to a maximum of 5 psi.



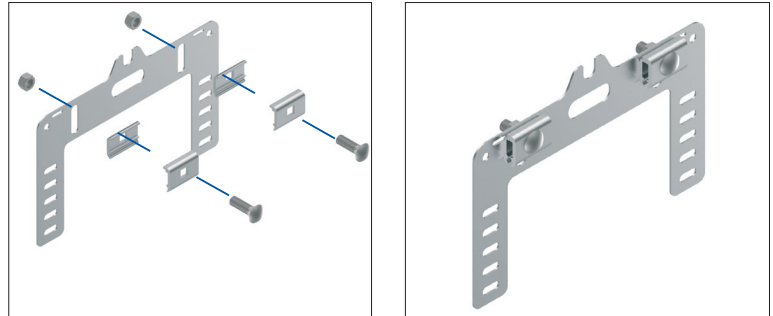
- 39** Spray all of the sealing surfaces of the closure with soapy water to determine if there are any leaks.



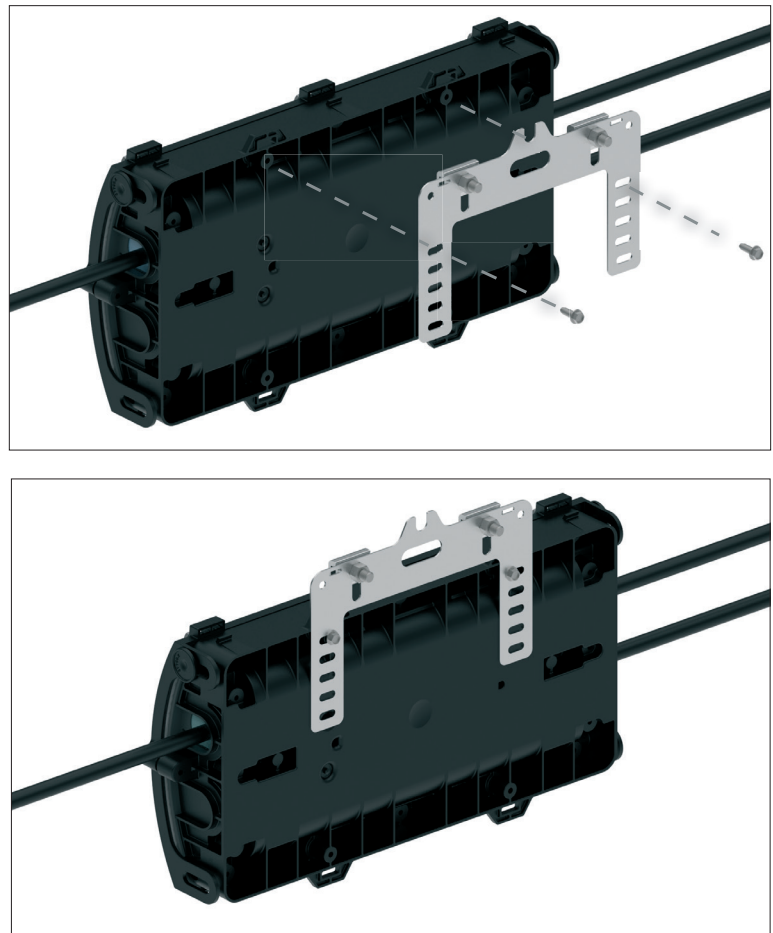
AERIAL MOUNTING BRACKET INSTALLATION

FOR COYOTE® IN-LINE RUNT STRAND AERIAL MOUNTING BRACKET KIT (CATALOG NUMBER: 8003797)

- 42 Assemble the bug nuts to the aerial bracket.



- 43 Secure the aerial bracket to the bottom of the base with the self-tapping screws as shown.



AERIAL MOUNTING BRACKET INSTALLATION CONTINUED

FOR COYOTE® IN-LINE RUNT STRAND AERIAL MOUNTING BRACKET KIT (CATALOG NUMBER: 8003797)

44 Mount the closure to the strand with the bug nuts.

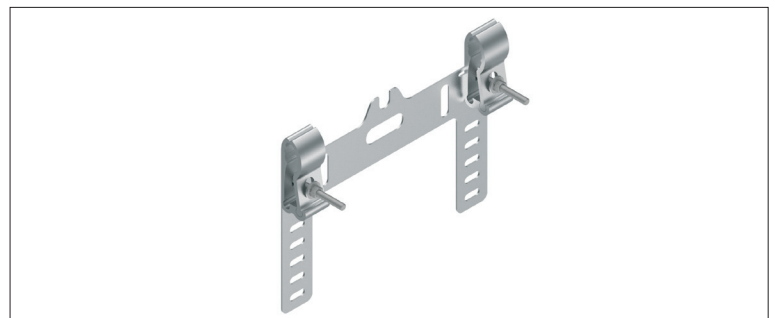
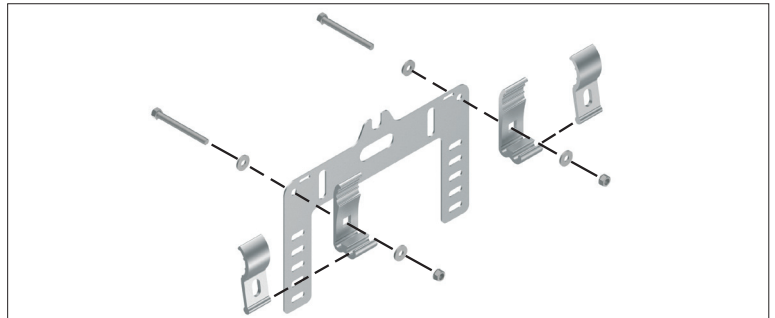
NOTE: Ensure that the warning label on the base is facing the ground when mounting a free-breathing closure.



AERIAL MOUNTING BRACKET INSTALLATION

FOR COYOTE® IN-LINE RUNT ADSS BRACKET KIT (CATALOG NUMBER: 8003864)

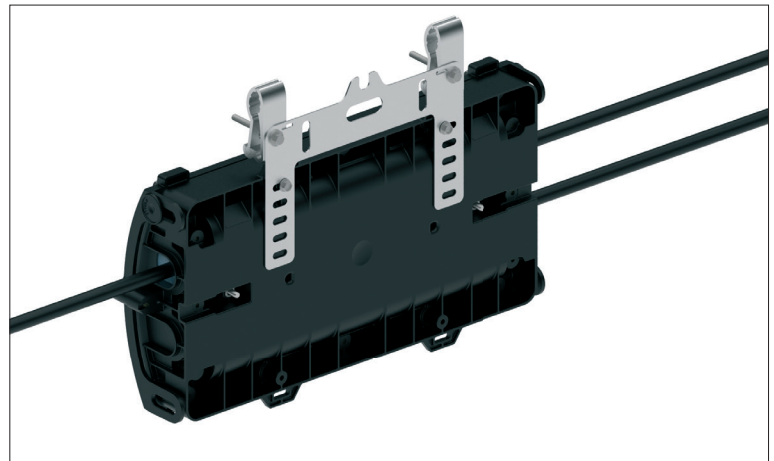
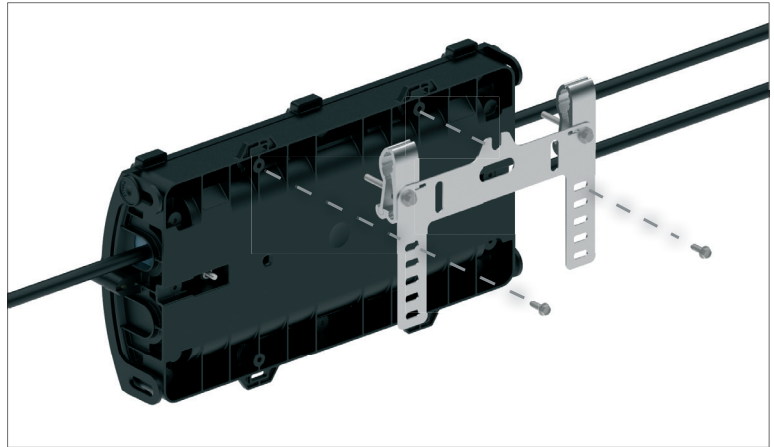
45 Assemble the **ADSS** Clamps to the aerial bracket as shown.



AERIAL MOUNTING BRACKET INSTALLATION CONTINUED

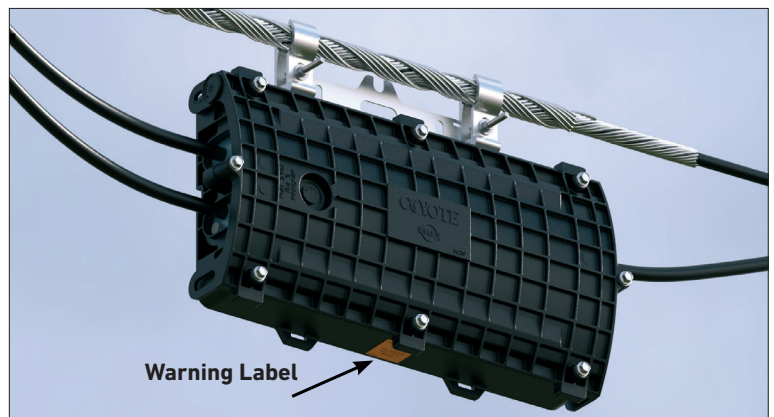
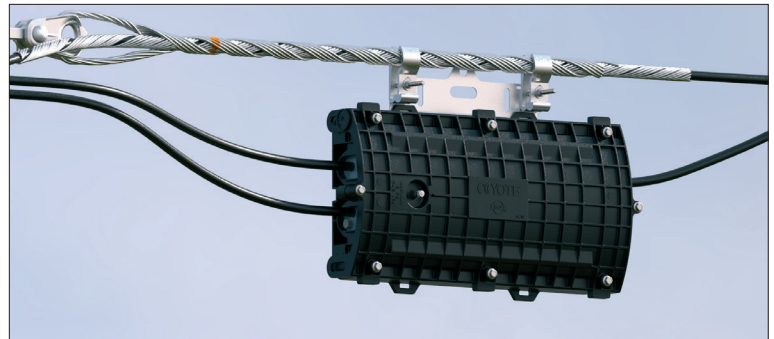
FOR COYOTE® IN-LINE RUNT ADSS BRACKET KIT (CATALOG NUMBER: 8003864)

- 46 Secure the aerial bracket to the bottom of the base with the self-tapping screws as shown.



- 47 Mount the closure to the dead-end with the **ADSS** clamps

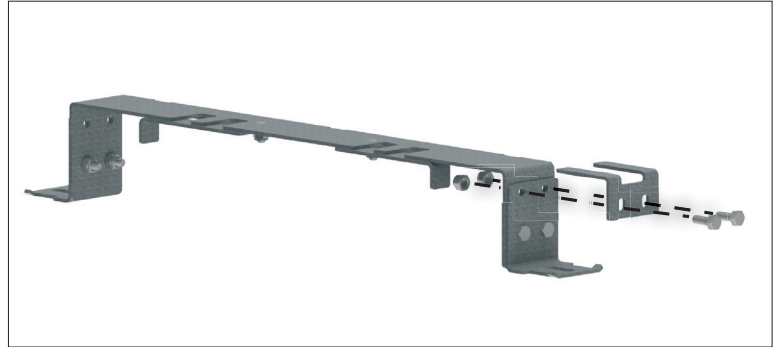
NOTE: Ensure that the warning label on the base is facing the ground when mounting a free-breathing closure.



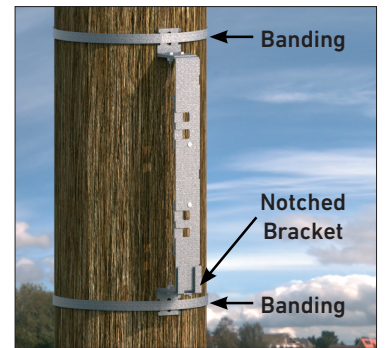
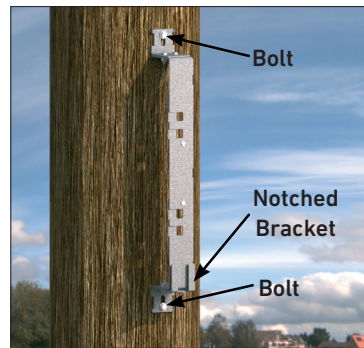
POLE/WALL MOUNTING OPTIONS

FOR COYOTE® IN-LINE RUNT POLE/WALL MOUNTING BRACKET KIT (CATALOG NUMBER: 8003703)

- 48** Secure one of the notched brackets to the mounting bracket with the bolts and nuts provided.



- 49** Secure the mounting bracket to the pole/wall with either bolts or banding per your company practice. Ensure that the notched bracket is located at the bottom of the mounting bracket when the bracket is being secured to the pole/wall.



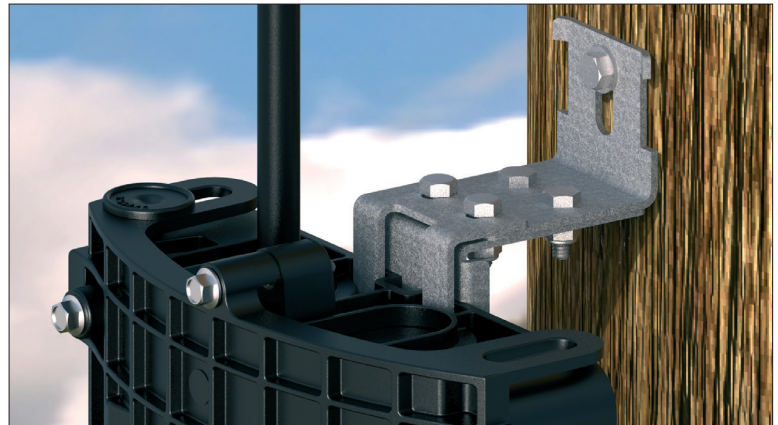
- 50** Slide the closure onto the notched bracket. Ensure that the notched bracket rests in the clearance pockets of the closure.



POLE/WALL MOUNTING OPTIONS CONTINUED

FOR COYOTE® IN-LINE RUNT POLE/WALL MOUNTING BRACKET KIT (CATALOG NUMBER: 8003703)

- 51** Secure the remaining notched bracket to the top of the mounting bracket with the bolts and nuts provided. Ensure that the notched bracket rests in the clearance pockets of the closure.



- 52** Completed installation of pole/wall mounting bracket.



HANDHOLE MOUNTING OPTIONS

FOR COYOTE® IN-LINE RUNT HANDHOLE MOUNTING BRACKET KIT (CATALOG NUMBER: 8003835)

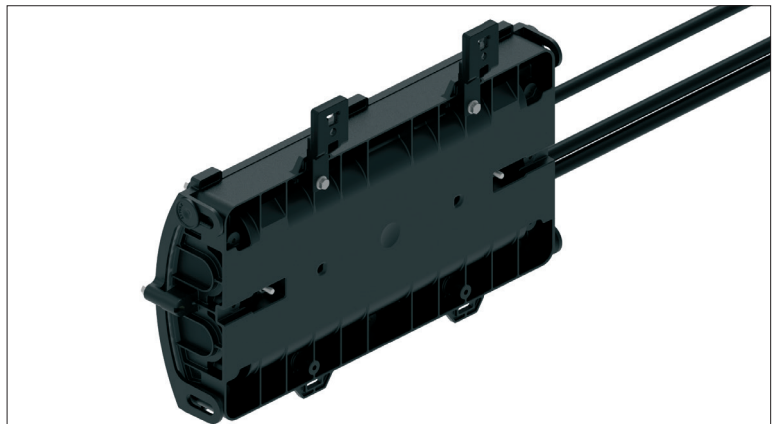
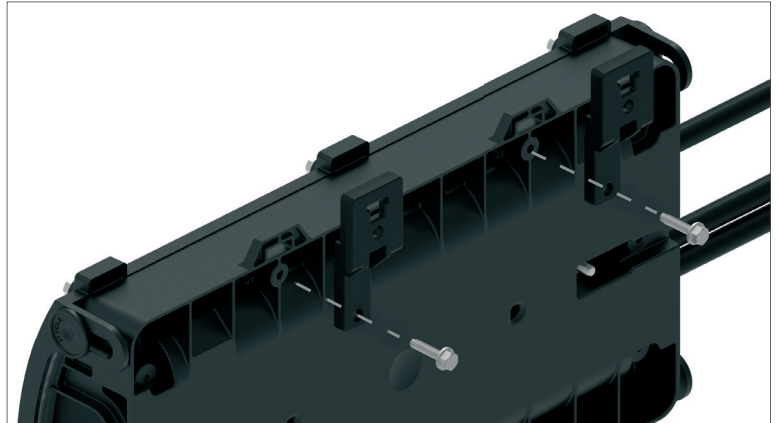
53

Secure the universal mounting bracket to the inner wall of the handhole with the two screws provided.



54

Secure the hanger brackets to the bottom of the base with the self-tapping screws as shown.

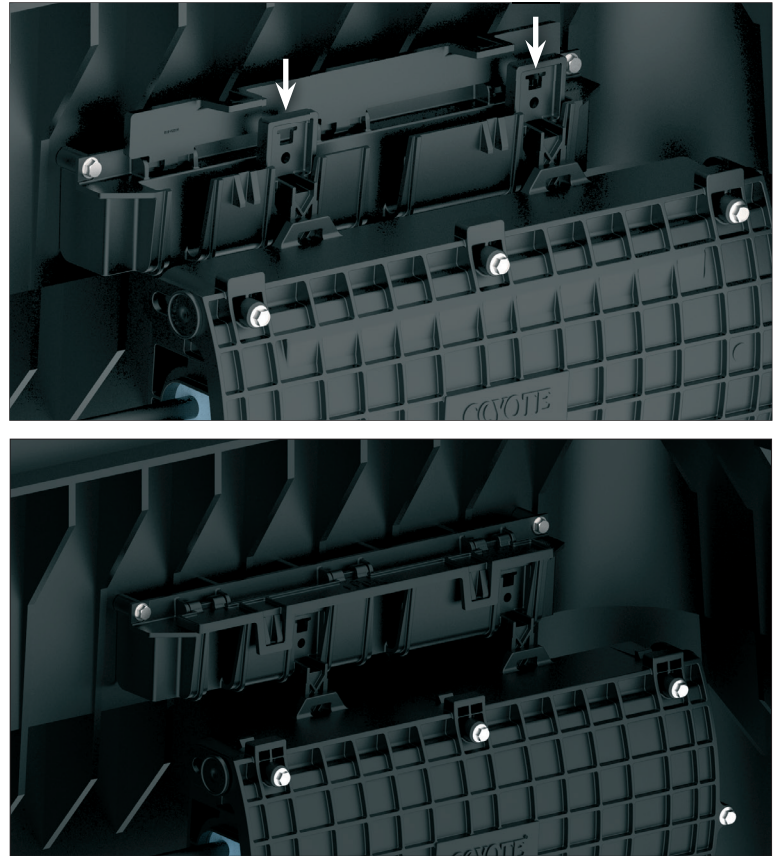


HANDHOLE MOUNTING OPTIONS CONTINUED

FOR COYOTE® IN-LINE RUNT HANDHOLE MOUNTING BRACKET KIT (CATALOG NUMBER: 8003835)

55

Slide the hanger brackets into the proper slots of the universal mounting bracket and snap the hinged cover of the universal mounting bracket into place to secure the hanger brackets.



APPENDIX A

COYOTE Splice Tray Capacity Chart for COYOTE In-Line RUNT Closures

PLP Catalog Number	Description	Image	Splice Type	Max Trays per Closure	Closure Max Splice Capacity
80809958	Short Low Profile LITE-GRIP® Splice Tray (24 ct)		Single Fusion	4	96
80813152	Short Low Profile LITE-GRIP Splice Tray (36 ct)		Single Fusion	4	144
80808945	Short Deep Profile LITE-GRIP Splice Tray (40 ct)		Single Fusion	2	80
LGSTR144	Short Deep Profile LITE-GRIP Splice Tray (144 ct)		Ribbon/Mass Fusion	2	288

APPENDIX B

COYOTE® In-Line RUNT Closure Kits

PLP Catalog Number	Description
8006951	COYOTE In-Line RUNT Closure Kit, Hermetically Sealed
8006952	COYOTE In-Line RUNT Closure Kit, Free Breathing
80061004	COYOTE In-Line RUNT Closure Kit, Express Hermetically Sealed
80061049	COYOTE In-Line RUNT Closure Kit, Flame Retardant

Accessory Kits for COYOTE In-Line RUNT Closures

8003733	End Plate Kit - Includes (1) End Plate, (3) Bolts, & (1) Silicone Packet
80807794	Hardware Bag Kit
8003713	Express Bracket Kit - Includes (4) Express Brackets
8003719	COYOTE In-Line RUNT Cover Kit
8003862	Fiber Organizer Kit for Ribbon Fibers
80805293	0.135" (3.4 mm) ID Transport Tube Kit - Includes (6) 34" long Transport Tubes for Single Fibers
80806439	0.25" (6.4 mm) ID Transport Tube Kit - Includes (6) 34" long Transport Tubes for Ribbon or Single Fibers
80807989	100 ft Roll of 0.17" (4.3 mm) ID Transport Tubing for Ribbon or Single Fibers
80807991	100 ft Roll of 0.25" (6.4 mm) ID Transport Tubing for Ribbon or Single Fibers

Mounting Brackets for COYOTE In-Line RUNT Closures

8003797	Aerial Mounting Bracket Kit for Strand Applications
8004179	Horizontal Aerial Mounting Bracket Kit for Strand Applications
8003864	Aerial Mounting Bracket Kit for ADSS Applications
8003703	Pole/Wall Mounting Bracket Kit
8003835	Handhole Mounting Bracket Kit

APPENDIX C

Grommet Chart for COYOTE In-Line RUNT Closures

PLP Catalog Number	Cable Range Inches in (mm)	Description	Image	Slitting Location
8003691	.40" - .60" (10.2 - 15.2 mm)	1-entry grommet		
8003692	.60" - .85" (15.2 - 21.6 mm)	1-entry grommet		
8003693	.85" - 1.0" (21.6 - 25.4 mm)	1-entry grommet		
8003694*	1.0" - 1.25" (25 - 32 mm)	1-entry grommet		
8003663	.42" - .60" (10.7 - 15.2 mm)	2-entry grommet		
8004065	.250" - .312" (6.4 - 7.9 mm)	4-entry grommet		
8003664	.30" - .43" (7.6 - 10.9 mm)	4-entry grommet		
8003990	.50" - .60" (12.7 - 15.2 mm) .125" - .25" (3.2 - 6.4 mm) and flat drop	4-entry grommet		N/A
8003665	.125" - .25" (3.2 - 6.4 mm) and flat drop	6-entry grommet		
8003676	.42" - .60" (10.7 - 15.2 mm) .125" - .25" (3.2 - 6.4 mm) and flat drop	7-entry grommet		
8004094	.093" - .125" (2.4 - 3.2 mm)	8-entry grommet		
8003677	.125" - .25" (3.2 - 6.4 mm) and Flat Drop	8-entry grommet		N/A

*8003694: COYOTE In-Line RUNT Closure and COYOTE Terminal Closures' maximum cable diameter range is 1.20"





GLOBAL HEADQUARTERS
660 BETA DRIVE
CLEVELAND, OH 44143

+1 440 461 5200
INFO@PLP.COM
PLP.COM