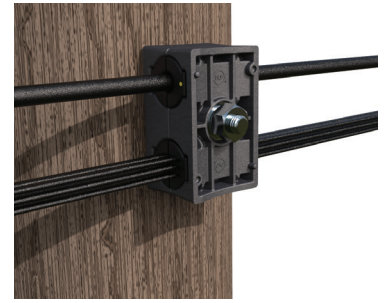




FIBERLIGN® LITE SUPPORT INSTALLATION INSTRUCTIONS

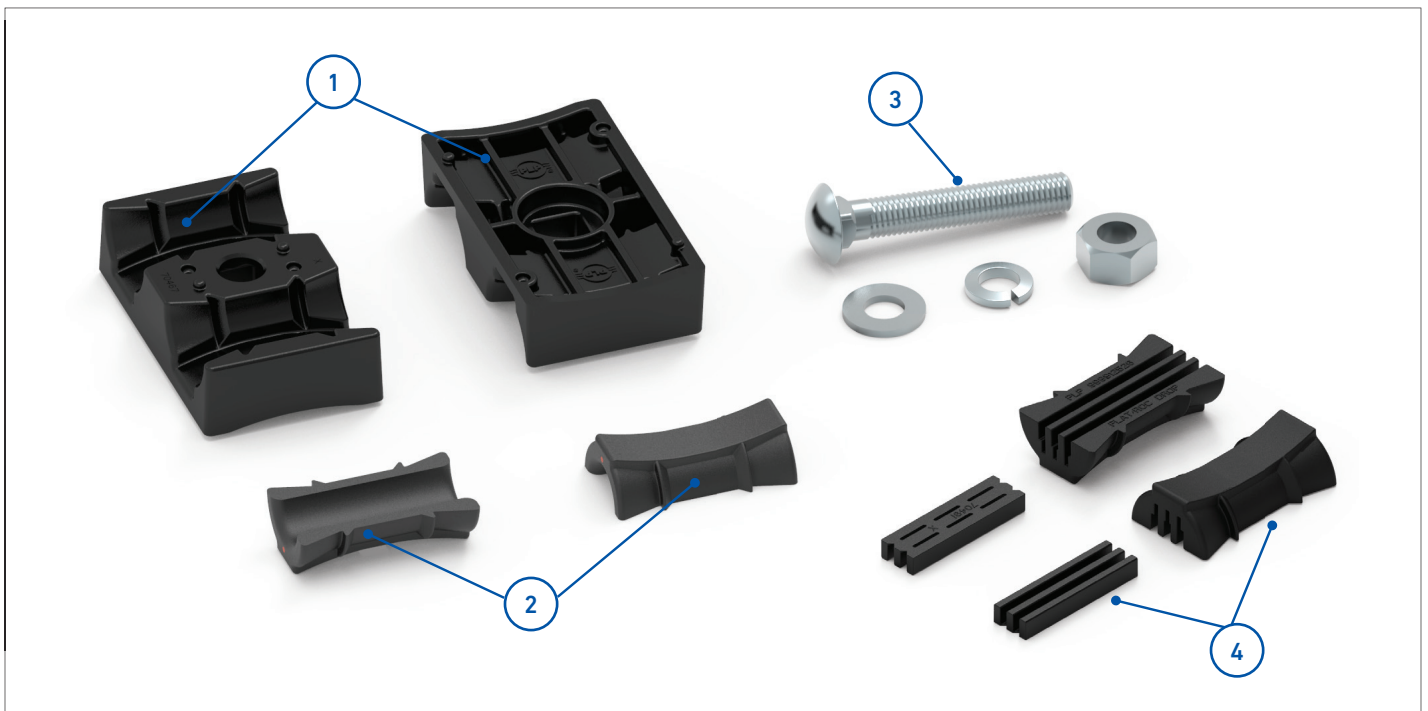


IMPORTANT SAFETY INFORMATION

READ AND COMPLETELY UNDERSTAND ALL INSTRUCTIONS BEFORE INSTALLING PRODUCT. FAILURE TO FOLLOW THESE INSTRUCTIONS MAY RESULT IN PERSONAL INJURY OR DEATH.

This product is intended for use by trained technicians only. This product should not be used by anyone who is not familiar with and not trained to use it. When working in the area of energized lines, extra care should be taken to prevent accidental electrical contact. Be sure to wear proper safety equipment per your company protocol. These instructions are not intended to supersede any company construction or safety standards. These instructions are offered only to illustrate safe installation for the individual. PLP products are intended for the specified application only. Do not modify this product under any circumstances. Do not reuse or reinstall any PLP product unless that capability is expressly indicated in the product's Installation Instructions. For proper performance and personal safety, be sure to select the proper PLP product before installation. PLP products are precision devices. To ensure proper performance, they should be stored in cartons under cover and handled carefully.

PACKAGE COMPONENTS



1. Housing Assemble Halves (2)
2. Insert Halves (2)
3. Hardware Kit for Band Mount Applications (Optional)
Catalog Number: 4800500
4. Multi-Drop Insert Set (Optional)
Catalog Number: 4800350

Tools Required:

Torque Wrench

INSTALLATION GUIDELINES

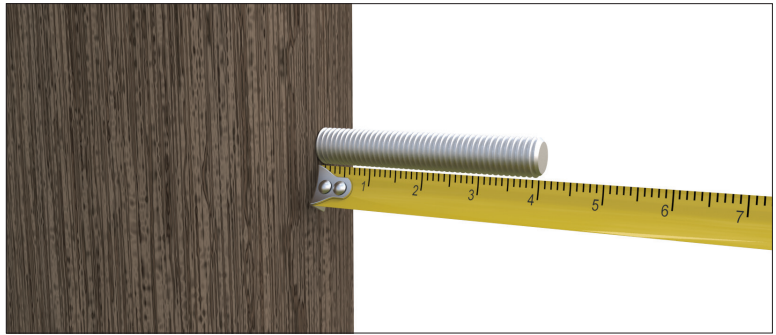
CAUTION

Failure to follow the precautions, notes, and steps contained within these Installation Instructions represents a misapplication of the product.

- The FIBERLIGN Lite Support (FLS) is intended to be used with All Dielectric Self Supporting (ADSS) cables including round-profile, flat drop, and ROC™ Drop Cables
- The FLS inserts are designed for a specific cable OD range and should only be used only on cables within that specified range. The numeric range is molded inside each insert for reference and each insert has color-code marks denoting the supported range.
- The FLS supports up to 300 ft spans and 20 degree line angle applications
- When used during stringing operations, the maximum allowable sag is 10 degrees for most ADSS cables.

WOOD POLE THROUGH-BOLT APPLICATION

- 1 Install a standard 5/8" through-bolt or double arming bolt on the pole or structure. The bolt should be long enough to provide a minimum of 4" of exposed thread.



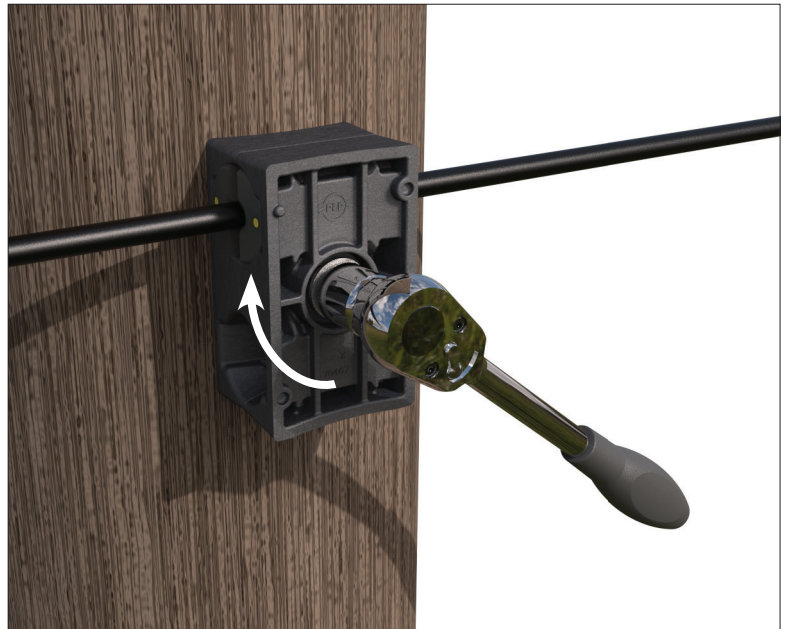
- 2 The FLS housing halves are identical and feature a slip-through mounting hole. Slide both halves onto the 5/8" through-bolt. Install a 5/8" flat washer, lock washer, and nut to loosely secure the housing halves. The cushion inserts should already be within the housing.



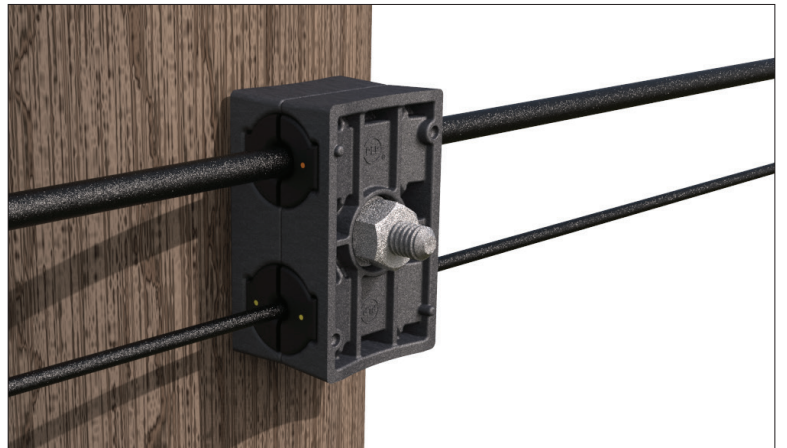
- 3 Place the ADSS cable into the grooves of the insert. Slide the housing halves against the structure to hold the cable in position and tighten the nut snug against the housing.



- 4 Ensure the cable is seated properly within the insert grooves. Torque the nut to a maximum of 30 ft-lb against the housing to complete the installation.



The same procedure can be followed to install a second cable when utilizing a second set of inserts within the bottom cavity of the housing.



BANDING APPLICATION

- 5 Each housing half has a molded groove that accepts a 3/4" metal band. Loosely install the banding kit hardware by inserting the carriage bolt through both halves, and then and loosely install the 5/8" flat washer, lock washer, and nut.

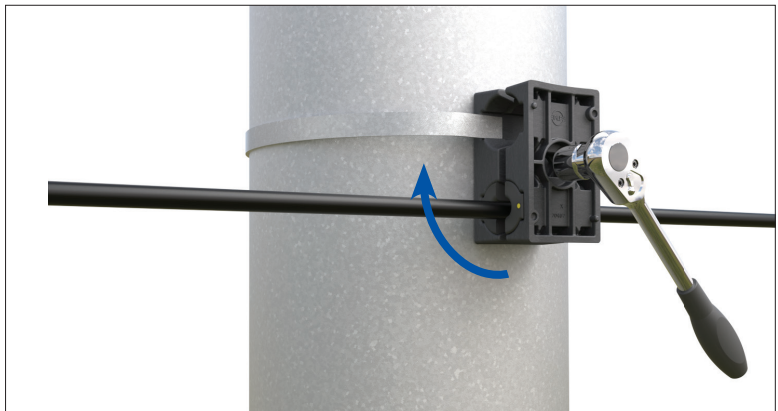


- 6 Install the designated band loosely on the pole or structure. Capture the housing against the structure by positioning the band in the top molded groove, then tighten it to the manufacturer's specified torque level.

NOTE: PLP does not provide banding, which must be purchased separately.



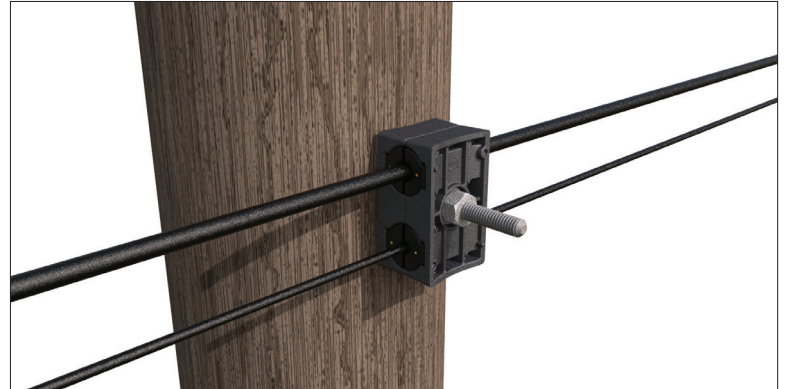
- 7 Lift the ADSS cable into the housing and inserts. Slide the second housing half against the banded half, ensuring the cable is properly seated in the insert grooves, then hand-tighten the nut to retain the cable. Torque the nut to a maximum of 30 ft-lb against the housing to complete the installation.



STACKING APPLICATION

- 8 For a stacked bolted configuration, a standard 5/8" through-bolt is required. The bolt must provide a minimum of 7" of exposed threads from the face of the structure to accommodate two FLS assemblies. To install the first FLS, refer to the "Wood Pole Through-Bolt Application" steps.

NOTE: The current FLS can be stacked on an existing Legacy FLS.



- 9 With the first FLS fully installed and secured to the pole, a second FLS can be stacked against the first by following the same installation procedure. Installation of the second FLS does not require the removal of hardware from the first FLS. On the exterior face of each housing, there are four alignment points near the corners to ensure proper alignment. With the two housing assemblies sitting flush with one another, install a 5/8" flat washer, 5/8" lock washer, and 5/8" nut. Torque the nut to a maximum of 30 ft-lb to complete the second nut installation.

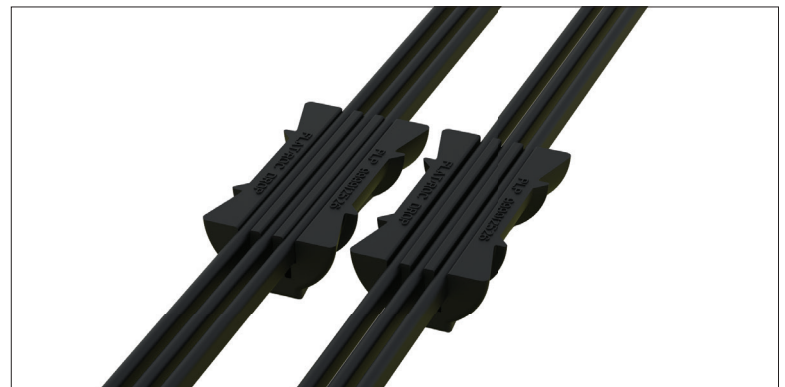


MULTI-DROP INSERTS

- 10 Remove the insert halves from the housing and remove the plugs.

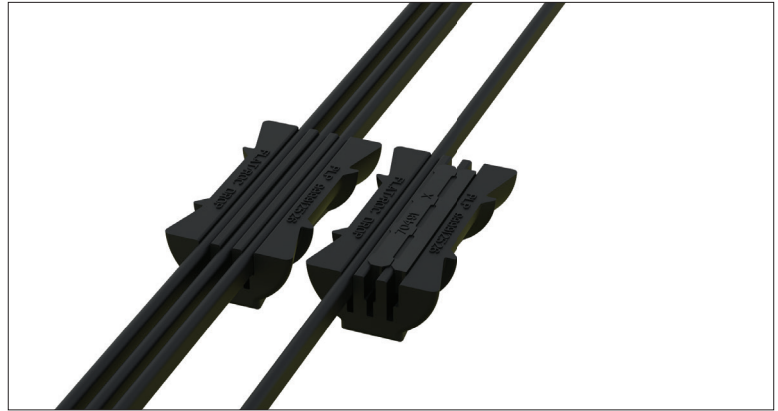


- 11 Identify the number of flat or ROC™ Drop cables being installed. The multi-drop inserts can support up to six ROC™ Drop or six Flat Drop cables. Do not mix and match cable types.

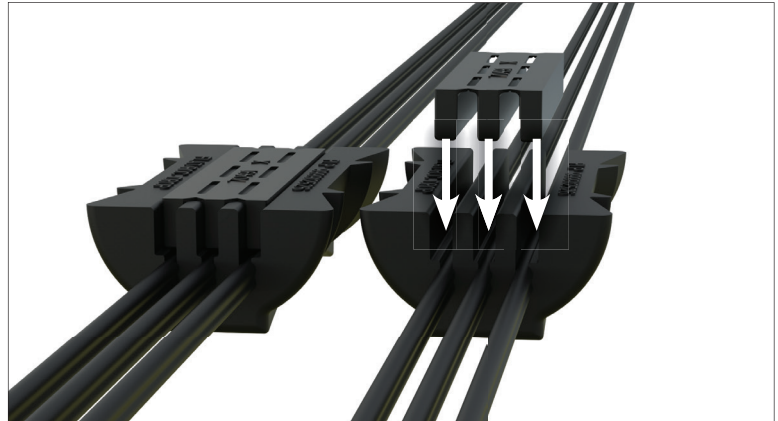


- 12 If using flat drop cables, place them into the larger section of the insert channels. Install plugs in any of the six channels that are not occupied by a cable.

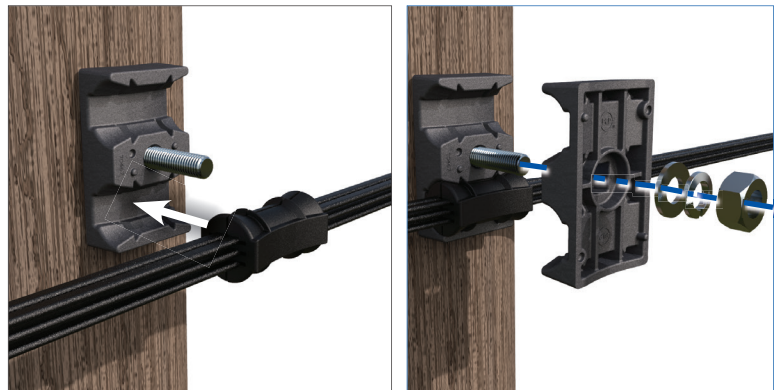
NOTE: The plugs have a perforated web to allow separation by hand as required.



- 13 If using ROC™ Drop cables, place them into the smaller section of the insert channels. Plugs must be installed in every channel, whether or not it is occupied by a cable.

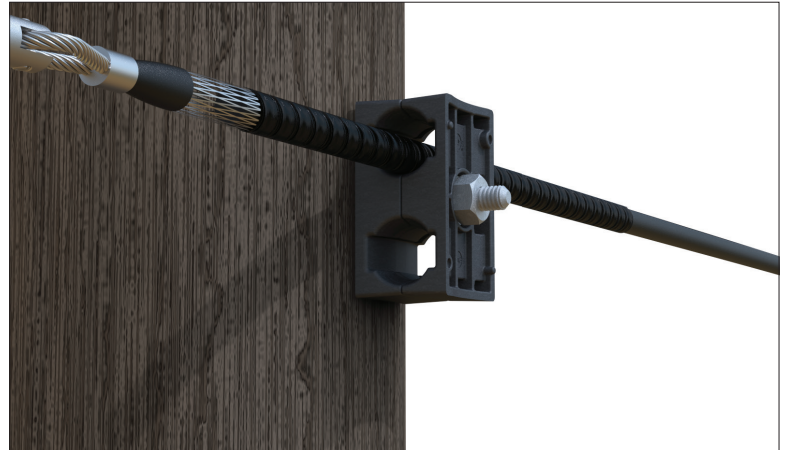


- 14 Once the cables and plugs are installed in the insert halves, place the inserts into the housing. Install a 5/8" flat washer, 5/8" lock washer, and 5/8" nut. Complete the installation by tightening the nut to a maximum torque of 30 ft-lb.



STRINGING OPERATION

- 15 Remove the insert halves and install the housing onto a 5/8" through-bolt or double-arming bolt. Lay or feed the cable or stringing rope into the top cavity of the housing. The housing must be tightened against the structure to keep the cable within the smooth surfaces of the housing cavity (20 ft-lb is adequate for this step). The largest cable, rope, or pulling-in grip that will move freely through the cavity is approximately 1-1/4" diameter. Once the cable stringing operation is completed, loosen the 5/8" nut to free the cable from the cavity and replace the inserts to complete the installation as described in the "Wood Pole Through-Bolt Application" procedure.





GLOBAL HEADQUARTERS
660 BETA DRIVE
CLEVELAND, OH 44143

+1 440 461 5200
INFO@PLP.COM
PLP.COM