



## FIBERLIGN® DOWNLEAD CUSHION

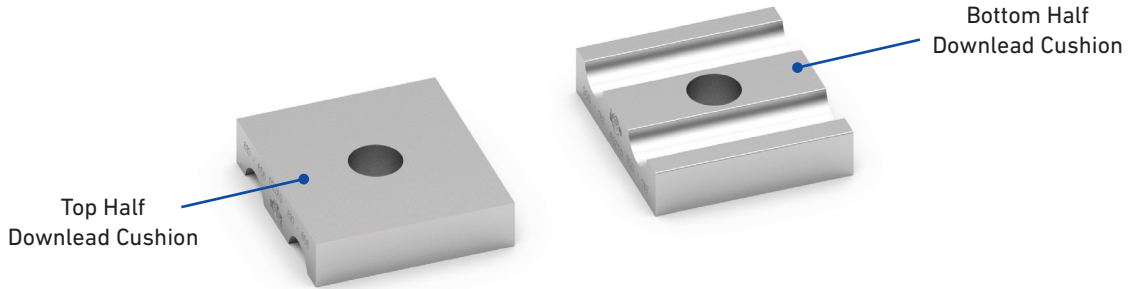
The **FIBERLIGN Download Cushion** secures OPGW downloads to poles or structures while minimizing compressive clamping forces which could be transferred to the optical elements. The Download Cushion is a two-piece design with a base and cap that has parallel grooves to accommodate specified OPGW diameters. Various mounting accessories can be included to install the Download Cushion on different types of utility poles and structures, including lattice towers.

### FEATURES AND BENEFITS

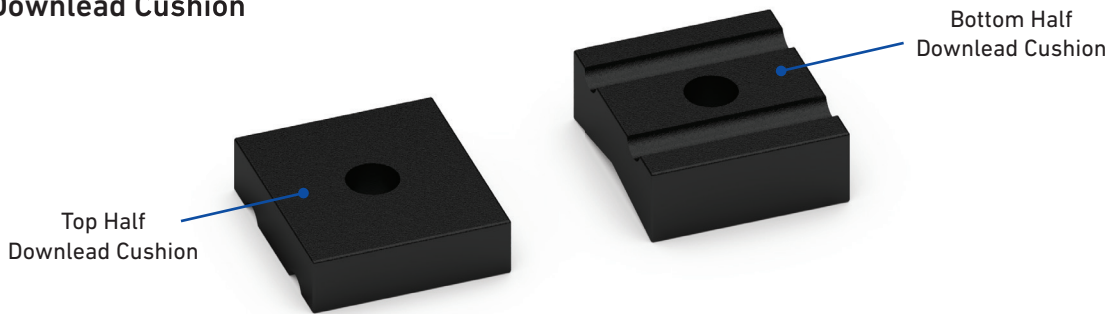
- Firmly secures OPGW to poles and structures without compromising OPGW integrity
- Standard cushion has two grooves to support each OPGW download
- Made from an all-aluminum alloy that provides an electrical path from the OPGW to the structure for bonding purposes or urethane
- Kits can include mounting accessories to secure the download cushion to poles (wood, concrete, or metal) or lattice towers

## COMPONENTS

### Aluminum Downlead Cushion



### Urethane Downlead Cushion



## MOUNTING ACCESSORIES

- Select the appropriate mounting kit based on the type of pole or structure used.
- Order the 1/2"-13 UNC Hex Head Bolt Hardware Kit when mounting a Downlead Cushion to a metal or concrete pole with a 1/2"-13 UNC female interface.
- The Banding Bracket Kit does not include banding to mount the bracket to the pole. Banding must be purchased separately.  
**NOTE:** The Banding Bracket can accept up to 1-1/4" wide banding.

### Wood Pole



Wood Pole Mounting Hardware Kit  
(Suffix Code: H1)  
(Catalog Number: 710010017)

### Metal or Concrete Pole



1/2"-13 UNC Hex Head Bolt Hardware Kit  
(Suffix Code: H3)  
(Catalog Number: 710011655)



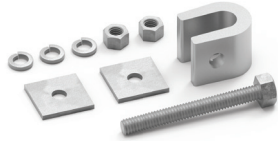
Banding Bracket Kit  
(Suffix Code: B1)  
(Catalog Number: 710010576)

## MOUNTING ACCESSORIES

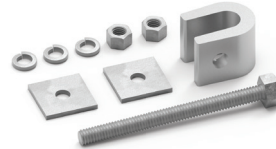
# FIBERLIGN®

- Lattice Tower Clamp Kits are for mounting Downlead Cushions to lattice towers with tower members up to 1-1/8" thick.
- Order the Metal Pole/Lattice Tower Clamp Kit when mounting a Downlead Cushion from a ladder clip of a metal pole that is 1/2" thick and has an opening of 1-1/2" wide or from lattice tower members up to 1-1/8" thick.
- Order the Horizontal Metal Pole/Lattice Tower Clamp Kit when mounting a Downlead Cushion from a ladder clip of a metal pole that is 1/2" thick and has an opening of 1-1/2" wide or the edge of a lattice tower member up to 1-1/8" thick.

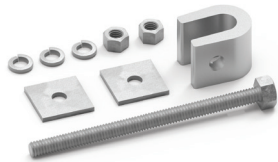
### Lattice Tower



Lattice Tower Clamp Kit with 6" Long Bolt  
(Suffix Code: LTC1)  
(Catalog Number: LTC-1)



Lattice Tower Clamp Kit with 8" Long Bolt  
(Catalog Number: 7000402)

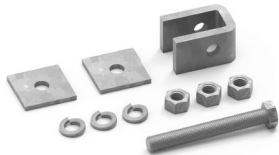


Lattice Tower Clamp Kit with 10" Long Bolt  
(Catalog Number: 7000401)

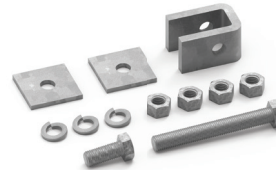


Light-Duty Lattice Tower Clamp Kit  
(Suffix Code: LTC2)  
(Catalog Number: LTC-2)

### Metal Pole or Lattice Tower



Metal Pole/Lattice Tower Clamp Kit  
(Catalog Number: 710015838)



Horizontal Metal Pole/Lattice Tower Clamp Kit  
(Catalog Number: 710016505)



FIBERLIGN Aluminum Downlead Cushion for OPGW Mounted to Steel Pole with Metal Pole/Lattice Tower Clamp Kit



FIBERLIGN Urethane Downlead Cushion for OPGW Mounted to Steel Pole with Horizontal Metal Pole/Lattice Tower Clamp Kit

## ORDERING INFORMATION

- Select the appropriate catalog number for the Download Cushion from the table below using the OPGW diameter and the type of pole or structure the Download Cushion will be mounted to.
- Order the Download Cushion with the 1/2"-13 UNC Hex Head Bolt Hardware Kit when the Download Cushion is being mounted to a metal or concrete pole with a 1/2"-13 UNC female interface.
- Download Cushions that are ordered with the Banding Bracket Kit do not include banding to mount the bracket to the pole. Banding must be purchased separately. **NOTE:** The banding bracket can accept up to 1-1/4" wide banding.
- Download Cushions ordered with the Lattice Tower Clamp Kit are used for mounting the cushions to lattice towers with tower members up to 1-1/8" thick.

### Aluminum Download Cushion

Catalog Number						OPGW Diameter Range	
Cushion Only	Cushion with Wood Pole Mounting Hardware Kit	Cushion with 1/2"-13 UNC Hex Head Bolt Hardware Kit	Cushion with Banding Bracket Kit	Cushion with Lattice Tower Clamp Kit	Cushion with Light-Duty Lattice Tower Clamp Kit	in	mm
8003644	8003644H1	8003644H3	8003644B1	8003644LTC1	8003644LTC2	0.328 – 0.374	8.3 – 9.5
8003654	8003654H1	8003654H3	8003654B1	8003654LTC1	8003654LTC2	0.375 – 0.422	9.5 – 10.6
8003653	8003653H1	8003653H3	8003653B1	8003653LTC1	8003653LTC2	0.423 – 0.468	10.7 – 11.8
8003266	8003266H1	8003266H3	8003266B1	8003266LTC1	8003266LTC2	0.469 – 0.515	11.9 – 13.0
8003267	8003267H1	8003267H3	8003267B1	8003267LTC1	8003267LTC2	0.516 – 0.562	13.1 – 14.2
8003268	8003268H1	8003268H3	8003268B1	8003268LTC1	8003268LTC2	0.563 – 0.609	14.3 – 15.4
8003269	8003269H1	8003269H3	8003269B1	8003269LTC1	8003269LTC2	0.610 – 0.656	15.5 – 16.6
8003270	8003270H1	8003270H3	8003270B1	8003270LTC1	8003270LTC2	0.657 – 0.703	16.7 – 17.8
8003271	8003271H1	8003271H3	8003271B1	8003271LTC1	8003271LTC2	0.704 – 0.750	17.9 – 19.0
8003477	8003477H1	8003477H3	8003477B1	8003477LTC1	8003477LTC2	0.751 – 0.797	19.1 – 20.2

### Urethane Download Cushion

Catalog Number						OPGW Diameter Range	
Cushion Only	Cushion with Wood Pole Mounting Hardware Kit	Cushion with 1/2"-13 UNC Hex Head Bolt Hardware Kit	Cushion with Banding Bracket Kit	Cushion with Lattice Tower Clamp Kit	Cushion with Light-Duty Lattice Tower Clamp Kit	in	mm
8003806	8003806H1	8003806H3	8003806B1	8003806LTC1	8003806LTC2	0.280 – 0.374	7.1 – 9.4
8003041	8003041H1	8003041H3	8003041B1	8003041LTC1	8003041LTC2	0.375 – 0.468	9.5 – 11.8
8003042	8003042H1	8003042H3	8003042B1	8003042LTC1	8003042LTC2	0.469 – 0.562	11.9 – 14.2
8003043	8003043H1	8003043H3	8003043B1	8003043LTC1	8003043LTC2	0.563 – 0.656	14.3 – 16.6
8003044	8003044H1	8003044H3	8003044B1	8003044LTC1	8003044LTC2	0.657 – 0.750	16.7 – 19.0
8003052	8003052H1	8003052H3	8003052B1	8003052LTC1	8003052LTC2	0.751 – 0.849	19.1 – 21.5
8003256	8003256H1	8003256H3	8003256B1	8003256LTC1	8003256LTC2	0.850 – 0.950	21.6 – 24.1
8003257	8003257H1	8003257H3	8003257B1	8003257LTC1	8003257LTC2	0.951 – 1.050	24.2 – 26.6
8003379	8003379H1	8003379H3	8003379B1	8003379LTC1	8003379LTC2	1.051 – 1.190	26.7 – 30.2



FIBERLIGN Aluminum Download Cushion for OPGW Mounted to Wood Pole (Suffix Code: H1)



FIBERLIGN Urethane Download Cushion for OPGW Mounted to Steel Pole (Suffix Code: H3)



FIBERLIGN Aluminum Download Cushion for OPGW Mounted to Lattice Tower (Suffix Code: LTC1)

