

# Supporting Re-entry & Justice-Involved Populations

## Who We Are

### Your Partner for Social Care

Our **technology solutions** provide flexible, reliable, and reusable infrastructure to seamlessly connect government agencies, community-based organizations and providers.

Our **accountable network model** allows state and local agencies to better manage and track real time performance and capacity of providers and community-based organizations.

Our **people** provide expert support for implementation, strategic planning and program design.



## The Challenge

**70-100M** of Americans—nearly **one in three**—have some type of criminal record. Ninety-five percent of all incarcerated individuals will be released and expected to re-enter their communities, but most will not receive the support they need to transition into stable work and healthy lives.

In an effort to combat this growing problem, state and local leaders across the country are devoting resources and programmatic support to reentry. Public health and probation departments managing the reentry process face systemic challenges, including:



Fragmented assistance between community programs and carceral settings make it harder to track and manage support services



Difficulty tracking the impact of access to health and social care on health outcomes, employment, and recidivism for individuals exiting incarceration.



Heightened privacy considerations for incarcerated individuals, requiring sophisticated tools to facilitate appropriate information-sharing and collaboration between systems.

## Our Solutions

Unite Us can help. We provide:



**Care coordination and management tools** help connect previously incarcerated folks to community supports they need and deserve to obtain health care, financial assistance, and job support, also helping reduce the likelihood of recidivism.



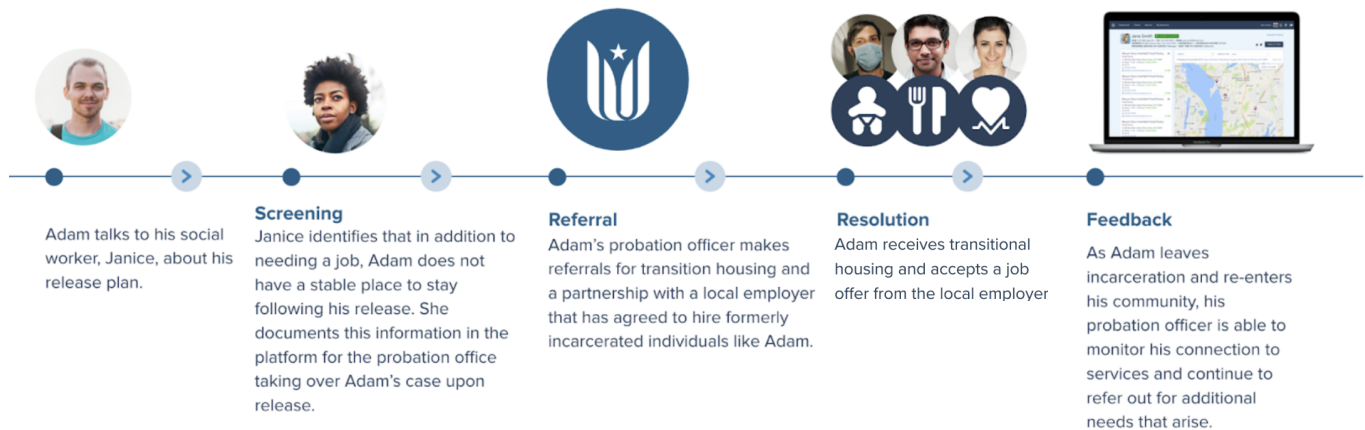
**Closed loop referral systems** allow case managers to track individual outcomes. Aggregated information can also be used to identify gaps, needs, and trends to better allocate resources.



**Prioritize privacy** through role-based permissioning, requirements for consent, and adherence to all applicable laws and regulations.

## How We Do It: An individual's Journey

**Scenario:** Adam is set to be released from a state facility in four months. Because of his record, he's unsure how to secure employment or a safe place to live following his release.



## Our Proven Track Record

### Sacramento County Department of Public Health's Adult Correctional Health

Unite Us has partnered with Sacramento County's Department of Public Health's Adult Correctional Health program since 2019. Using a custom assessment to screen for health and other needs, social needs are identified prior to release so that individuals leaving incarceration are immediately connected to the right services. To ensure that individuals' social care needs continue to be met as they return to community settings, Unite Us' closed-loop referral tool facilitates partnerships between correctional health facilities, Community HealthWorks—an organization that distributes benefits, and a network of more than 3,000 CBOs and social care programs across Sacramento County. Critical partners supporting reentry include the Sacramento Food Bank, Legal Services of Northern California, and ACC Senior Services.



To learn more, reach out to our team at [www.UniteUs.com](http://www.UniteUs.com)