



BLUE LUPIN IN LUPIN APPLICATION SNAPSHOT

Detect blue lupin weeds in your narrow-leaf lupin crop using the Bilberry smart spraying system.

BASIC INFORMATION

Spray What You Can See

When using any Bilberry smart spraying application, the cameras must see the weeds in order to detect and spray them. Keep in mind the effects of high stubble loads, crop shading and the crop canopy when using the system.

Target Weed

This application specifically detects blue lupin (*Lupinus cosentinii*) plants within your narrow-leaf lupin crop. This application is the first specialised application developed to treat the blue lupin pests in this crop type.

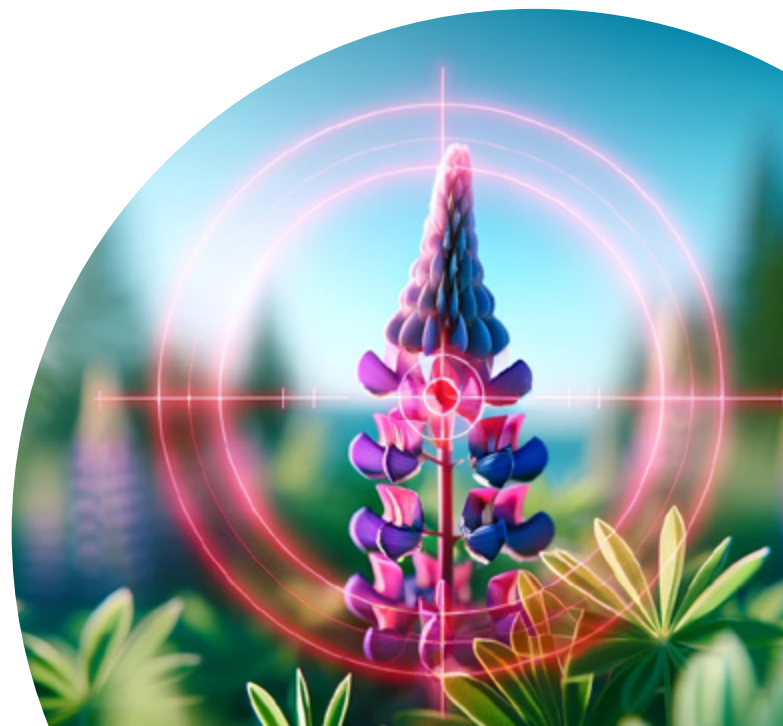
Best Light Time

Ideal spraying time starts one hour after sunrise and ends one hour before sunset, when natural light is the strongest.

20 km/h
optimal spraying speed

Best Light Time

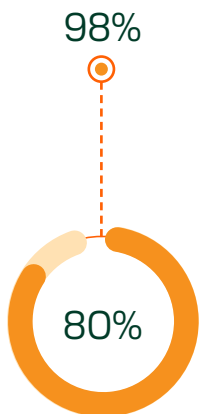
Ideal spraying time starts one hour after sunrise and ends one hour before sunset, when natural light is the strongest.



KEY BENEFITS

Significant Savings

Average chemical savings for Bilberry users is about 80% but has been proven to be as high as 98% in some use cases. The fewer weeds there are in a field, the higher the savings will be.



Herbicide Resistance Management

Increasing herbicide resistance in weeds is a big issue for farms today. Utilising the Bilberry smart spraying system allows users to apply robust rates of herbicides to maximise weed control and reduce the risk of further herbicide resistance, all while increasing the profitability of the farming enterprise.

Agronomic Data

Understand your weed pressure levels and overall savings per session using weed maps produced based on in-field detections.

RECOMMENDATIONS

Crop Stage

This application is usable during all crop stages, however it is best used later in the growing cycle as that is typically when blue lupin plants are more differentiated to the narrow-leaf lupin crop.

The differentiating factors are the size and shape of the foliage as well as the flowers when they bloom.

Weed Size

This application can detect blue lupin plants from the 2-3 leaf stage until the end of the season when they are large in size.

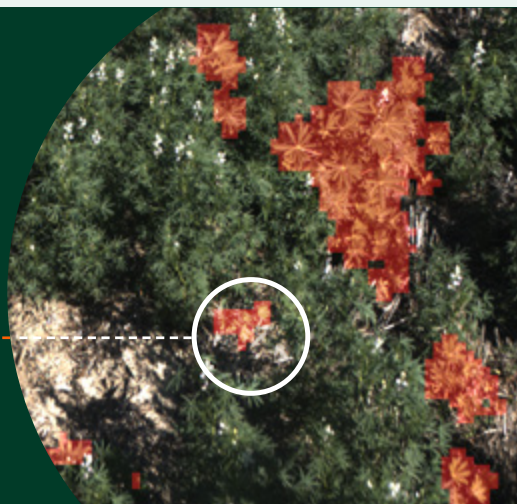
The application not only detects the weeds based on the foliage but also the flowers.

The larger the target weed, the more likely it will be detected by the application.

Get the most out of your Bilberry system

Additional reading [here.](#)

Detected weeds are shown here highlighted in red. 



© 2025, PTx Trimble LLC. All rights reserved. PTx and associated Logo are trademarks of AGCO Corporation. All other trademarks are the property of their respective owners. PN 022503-2088 (02/25)



Reach out to us to find out more:

www.bilberry.io

bilberry-sales-ug@ptxag.com