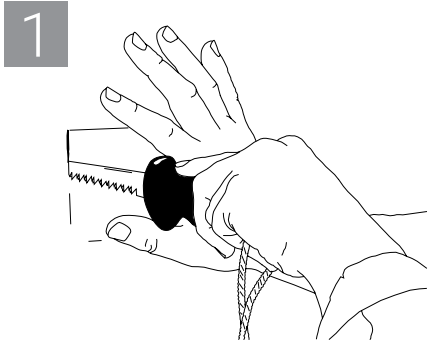


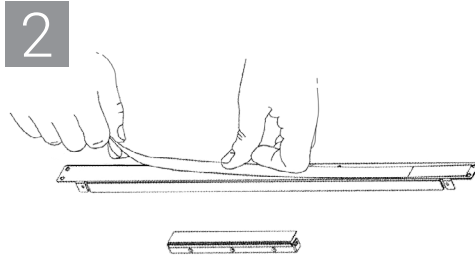


EZ Path® Ultra Fire-Rated Pathway Wall Kit

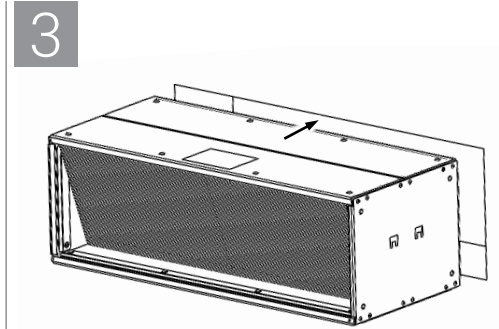
(Part Numbers: EZUTDP612W, EZUTDP618W, EZUTDP624W)



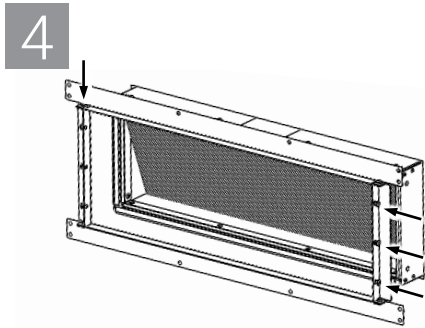
1 Cut opening in wall. Reference table for opening requirements. Framing around opening is required. See UL STI System for more information.



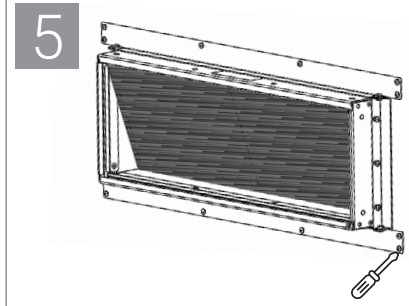
2 Peel back release liner of intumescent gasket. Install provided intumescent gasket to horizontal and vertical wall plate. Ensure gasket material is applied to flange surfaces contacting the wall and the device. Trim material if needed. The 24" horizontal wall plate may need two intumescent gasket strips.



3 Carefully insert the device into designated wall opening. Position the device centrally within the wall.



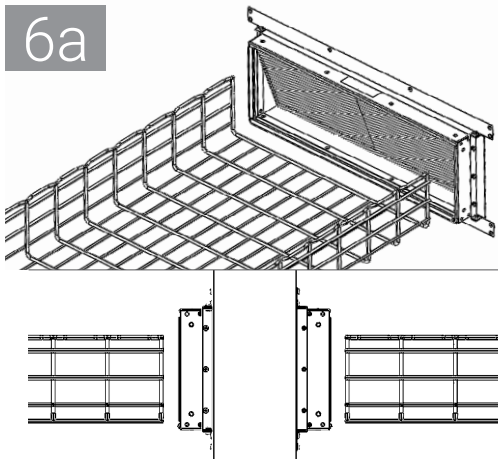
4 Insert the assembled wall plates onto the device with the provided screws and nuts. Next, use the supplied screws to secure the wall plate to the device, making sure the side screws pass through the vertical wall plates. Repeat step 4 for the opposite side of wall. Confirm that the wall plates are flush with the wall assembly on both sides.



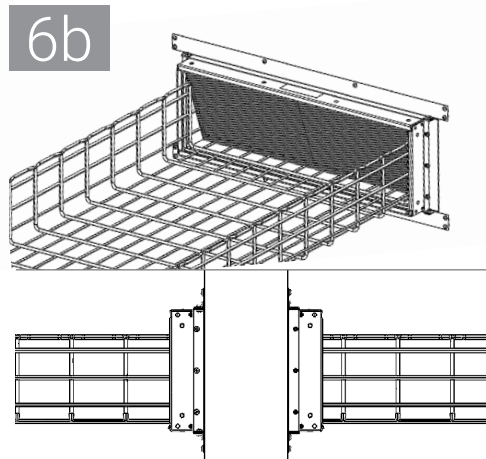
5 Fasten brackets to the wall by inserting appropriate fasteners (not provided) into predrilled holes. For gypsum board/stud wall assemblies, use minimum 1/8" (3.2 mm) diameter Type G steel screws (NOTE: Brackets must be secured to wall framing members). For concrete or concrete block walls, use minimum 3/16" (4.8 mm) diameter steel concrete screws.

OPENING REQUIREMENTS

Device	Opening Width	Opening Height
EZUTDP612W	14" (355.6 mm)	9" (228.6 mm)
EZUTDP618W	20" (508 mm)	9" (228.6 mm)
EZUTDP624W	26" (660.4 mm)	9" (228.6 mm)



6a In a particular configuration, the EZ Path® Ultra permits the termination of the cable tray at the device, enabling cables to pass through the device with up to 100% visual fill.



6b Alternatively, the cable tray may be installed through the device and loaded with cables until it reaches 100% visual fill.

Note: For more information on firestop installation, refer to ASTM E3157.