



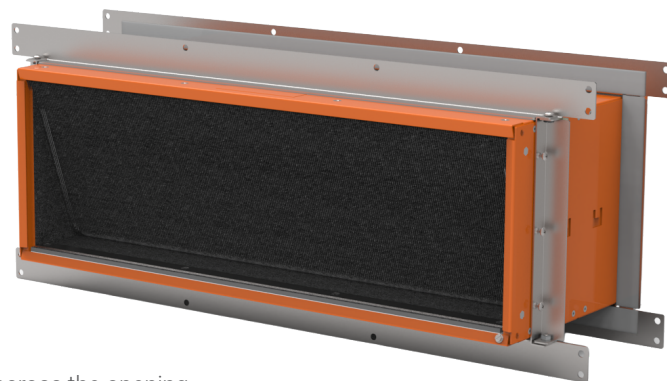
EZ Path[®] ULTRA Fire-Rated Pathway

The EZ Path[®] ULTRA Fire-Rated Pathway is a factory-manufactured fire-resistance-rated pathway device designed for high-capacity cable penetrations through fire-resistance-rated walls. The device is intended for installations involving large volumes of data, communications, and control cabling, including cable tray-supported systems where cable density and bundle size exceed typical pathway applications.

The device incorporates an integral intumescent sealing system that expands under fire exposure to restrict the passage of flames, hot gases, and smoke. The pathway permits cable installation, removal, and retrofit without removal or replacement of installed materials when used in accordance with applicable listed systems.

The EZ Path[®] ULTRA is specifically intended for large cable conditions, including:

- High-fill cable tray systems
- Main distribution pathways and backbone routing
- Data center and telecommunications infrastructure
- Oversized pulling heads on fiber optic cables



Cable Tray Conditions

Cable tray-supported cable installations are permitted under the following conditions:

Continuous Cable Tray:

Cable tray passes through the rated assembly and remains mechanically connected across the opening.

Discontinuous Cable Tray:

Cable tray terminates on one or both sides of the rated assembly. Cables extend through the opening independently.

Applications

EZ Path[®] ULTRA Fire-Rated Pathway is designed to accommodate continuous and discontinuous cable tray systems. The device is designed to ensure firestopping performance for the full capacity of the cable tray that it accommodates.

Specifications

All data, video, and communications cable bundles shall utilize an enclosed fire-rated pathway device wherever said cables penetrate rated walls. The fire-rated pathway shall permit continuous and discontinuous cable tray systems and shall contain a built-in fire sealing system that requires no maintenance for 0-100% cable tray fill capacity*, and is sufficient to maintain the hourly fire rating of the penetrated barrier. The self-contained sealing system shall automatically adjust to the installed cable loading and shall permit cables to be installed, removed, or retrofitted without the need to remove or reinstall firestop materials. The pathway shall be UL Certified and/or FM Systems Approved and tested to the requirements of ASTM E814 (UL1479) and CAN/ULC-S115.

Specified Divisions

Division 7	07 84 13	Penetration Firestopping
Division 26	26 00 00	Electrical
Division 27	27 00 00	Communications

PHYSICAL PROPERTIES

Shell Composition	0.059" (1.5 mm) Galvanized Steel
Allowable Cable Fill	100% of Tray Capacity*
Fire Resistance Ratings	1 and 2 hour
Expansion Begins	350°F (177°C)
Volume Expansion	30x
In Service Temperature	Less than 130°F (54°C)
Storage Temperature	Less than 130°F (54°C)
Shelf Life	No Limit

Features & Benefits

- Accommodates continuous and discontinuous cable tray systems
- Fast, repeatable installation method
- No additional firestopping required
- Allows for 100% of the tray manufacturer's advertised cable capacity*
- Dedicated versions support 12", 18", and 24" wide cable tray, up to 6" high

*Fire testing demonstrates performance from 0% to 100% visual cable fill within the device. Cable tray loading, support spacing, and fill shall not exceed the limits established by the cable tray manufacturer.

EZ Path® ULTRA Fire-Rated Pathway



Performance

EZ Path® ULTRA Fire-Rated Pathway is UL Tested and Certified in accordance with ASTM E814 (UL1479) and CAN/ULC-S115. Systems are available for common wall construction with ratings up to and including 2 hours.



Limitations

This product has been designed to be safe with plastics. It has been used extensively and successfully with various types of plastic pipes, tubes, and plastic cable insulations. Variations in these materials, however, make it impossible to guarantee compatibility. STI strongly recommends that the user consult with the pipe, tubing, or cable manufacturer in question regarding any known sensitivities or potential restrictions before applying this product.

Cable Installation

Cables may easily be added or removed at any time without removing or reinstalling the fire seal. Cables may be added individually or in bundles. Wrapping ends with a low-friction tape facilitates cable insertion. A self-adjusting cable throat automatically accommodates the cable bundle as it passes through the pathway.

Maintenance

No maintenance of the pathway is typically required.

System Selection

To find your firestop system or create a submittal, visit <https://systems.stifirestop.com/> to use System Search & Submittal Builder. You may also visit the [UL Online Certifications Directory/UL Product iQ™](#) for complete listings. (Firestop Systems).

Technical Service

Specified Technologies Inc. provides toll-free technical support to assist in product selection and appropriate installation design. UL System designs suitable for submittal or specification purposes are available on request. The company's website, www.stifirestop.com, provides a complete library of technical information, including Safety Data Sheets (SDS).

Precautionary Information

The use of this device is subject to local, regional and national codes. Consult the local Building Code Official or Authority Having Jurisdiction regarding any additional requirements.

Availability

EZ Path® Products are available from Specified Technologies Inc. (STI) authorized distributors. For additional purchasing and technical information, call 1-800-992-1180 or visit www.stifirestop.com.

ORDERING INFORMATION - DEVICE

Catalog Number	UPC Number	Description	(UOM) Qty.	Case Qty.	Weight (Each)
EZUTDP624W	730573952801	EZ Path ULTRA Fire-Rated Pathway Wall Kit, 6" x 24" Tray (Pass-Through/Terminate)	1	1	
EZUTDP618W	730573952818	EZ Path ULTRA Fire-Rated Pathway Wall Kit, 6" x 18" Tray (Pass-Through/Terminate)	1	1	
EZUTDP612W	730573952825	EZ Path ULTRA Fire-Rated Pathway Wall Kit, 6" x 12" Tray (Pass-Through/Terminate)	1	1	

IMPORTANT NOTICE: ALL STATEMENTS, TECHNICAL INFORMATION, AND RECOMMENDATIONS CONTAINED HEREIN ARE BASED UPON TESTING BELIEVED TO BE RELIABLE, BUT THE ACCURACY AND COMPLETENESS THEREOF IS NOT GUARANTEED.

STI TYPICALLY WARRANTIES ITS PRODUCTS FOR ONE FULL YEAR. FOR COMPLETE DETAILS OF OUR STANDARD WARRANTY, PLEASE VISIT WWW.STIFIRESTOP.COM/LEGAL/WARRANTY

MADE IN THE USA - © 2026 SPECIFIED TECHNOLOGIES INC.

