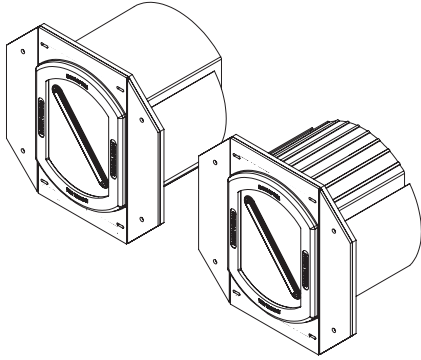


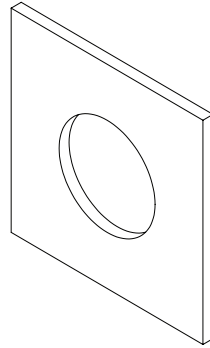


Clinician Patient Access Device  
(Part Number: CPAD4, CPAD4K)



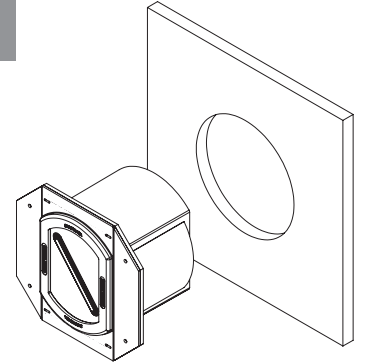
Parts Included (Not to Scale)

1



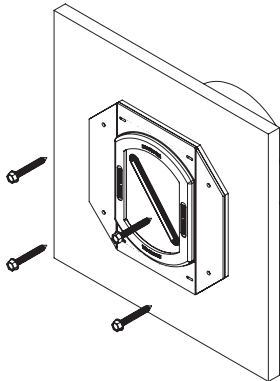
Determine location and cut nominal 6" diameter through wall.

2



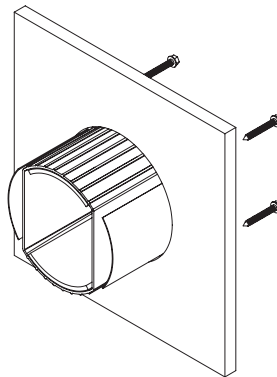
Install outer shell into opening.

3



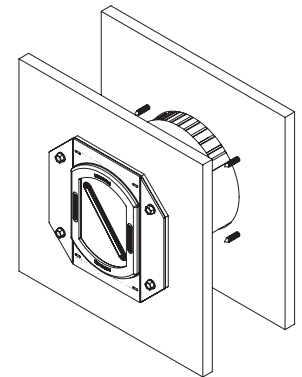
Secure device to wall using 4 screws and washers (not Included - see Table A).

4



Repeat Steps 1-3 on opposite wall, with the exception of installing the Inner Shell. Make sure inner shell nests inside of outer shell.

5



Fully Assembled

TABLE A: FASTENER TYPES

Fastener Type	No. 8 min 1-1/2 in. (38 mm) long steel screws featuring hi-lo threads and pan-heads
Washer Type	No. 10 by 1/2 in. OD steel washer

Disclaimer: In order for the CPAD device to maintain the required fire, smoke, air leakage and acoustic ratings, the neoprene gaskets of the device may cause a ventilator tube passing through the device to partially or completely collapse. Before installing a ventilator tube through the CPAD it is recommended to consult with the institution's clinical/respiratory staff to determine if the tubing is sturdy enough to withstand the gasket's durability. This is provided only for information purposes and does not establish a standard of care or constitute medical or legal advice

Note: For more information on firestop installation, refer to ASTM E3157.



Specified Technologies Inc.  
Somerville, NJ 08876 USA  
T: (800) 992-1180  
F: (908) 526-9623  
www.stifirestop.com

