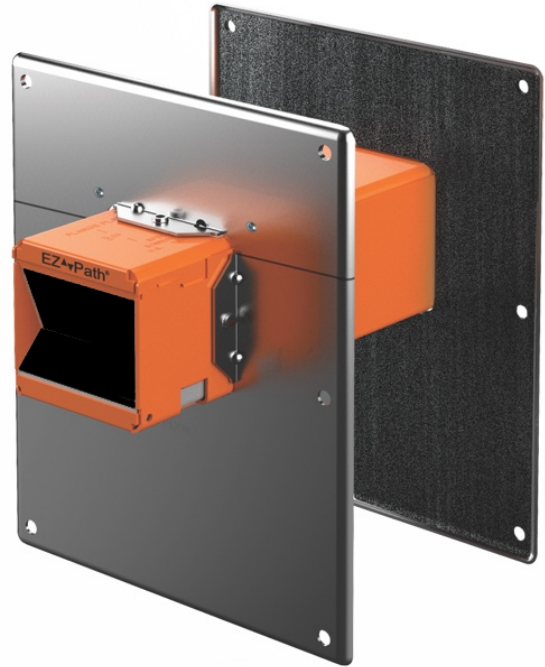


EZ Path® Series 33 Retrofit Wall Plate

The EZ Path® Series 33 Retrofit Wall Plate is designed to facilitate EZ Path® device installation around previously installed cables or in new or existing cabling applications where a large opening or opposing offset openings have been created in either gypsum board or concrete walls. The assembled two-piece plates measuring 8 in. x 10 in. (203 mm x 254 mm) can be rotated independently of each other in 90° increments to cover irregular or offset openings.

Features & Benefits

- Tested in Concrete Walls and Gypsum Walls
- Sized to address 8 in. x 10 in. (203 mm x 254 mm) openings
- Split design for new or existing penetrations
- Oversized to accommodate for misshapen openings



ORDERING INFORMATION

Catalog Number	UPC Number	Description	(UOM) Qty.	Case Qty.	Weight (Each)
EZDP33WR	730573005330	Retro-Fit Kit – Device with retro-fit wall mounting plates and labels	1	1	6.63 lbs (3.01 kg)
EZP133R	730573005354	Retro-Fit Mounting Plates with labels	1	1	3.57 lbs (1.62 kg)

TEST STANDARDS: ASTM E814 (UL 1479), CAN/ULC-S115

