

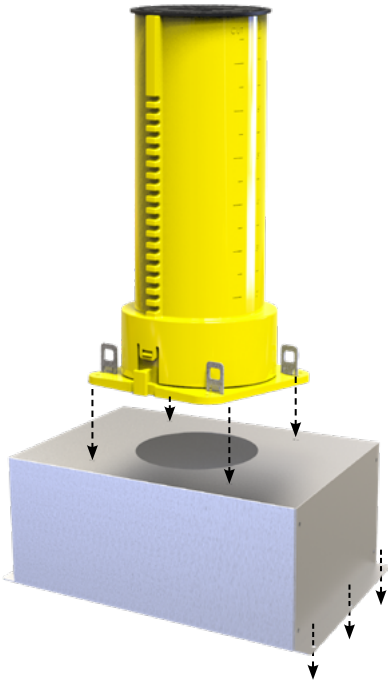
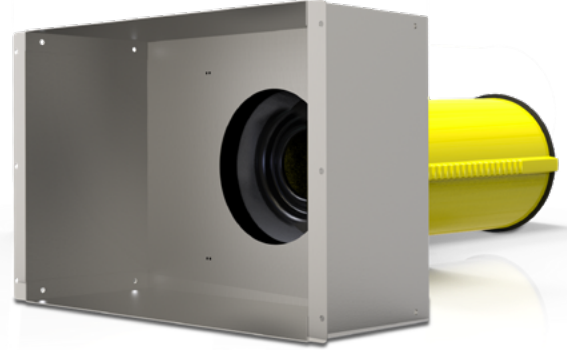


Cast-In Aerator Adapter

The Cast-In Aerator Kit creates voids in the concrete floor beneath the Cast-In Firestop Device without the need for additional forming materials. The provided space allows for positioning of piping systems closer to the underside of the concrete floor reducing wasted space between the concrete floor and piping.

Features & Benefits

- Save Time & Money – No need for added forming
- Combines with 3 in (76 mm) & 4 (102 mm) in SpecSeal® Cast-in Devices
- Creates a recess of up to 4 in (102 mm) concrete slab
- Simplify plumbing installations
- Works with Sovent® Fittings



ORDERING INFORMATION

Catalog Number	UPC Number	Description	Pipe Trade Size	(UOM) Qty.	Case Qty.	Weight (Each)
CD300A	730573343051	3" (76 mm) Cast In Device Aerator Adapter, Device not Included	3" (76 mm)	1	6	1.61 lbs (0.73 kg)
CD400A	730573344058	4" (102 mm) Cast In Device Aerator Adapter, Device not Included	4" (102 mm)	1	6	1.80 lbs (0.82 kg)

TEST STANDARDS*: ASTM E814 (UL 1479), CAN/ULC-S115
 *When installed in conjunction with a SpecSeal® Cast-In Firestop Device



Firestop, Smoke, & Sound Solutions



[Click here to learn more about](#)

