



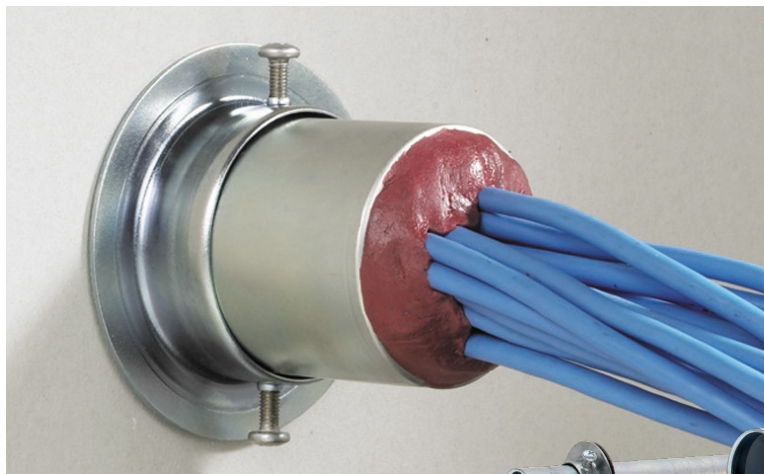
COMPLETE SOLUTION FOR NEW CABLING PENETRATIONS

# Ready® Sleeve

SpecSeal® Ready® Sleeve are designed for new cabling penetrations where sleeves are required. Each Ready® Sleeve kit includes a preformed steel sleeve with rolled edges, steel escutcheon plates with intumescent gaskets, and correct volume of our SpecSeal® SSP Firestop Putty. The rolled lip of each Ready® Sleeve eliminate the need for bushings while the included escutcheon plates and gaskets take the place of steel strut and strap supports. The rolled lip of the Ready® Sleeve protects the cables during installation while the escutcheon plates/gaskets lock the device in place without the need for struts or straps as a means of support.

## Features & Benefits

- Ready-to-install out of the box saves time on jobs
- Offered in three sizes: 1 in (25 mm), 2 in (51 mm), & 4 (102 mm) in diameter
- Complete kit, ready-to-install out of the box
- Sized for assemblies up to 10 in (25.4 mm) thick
- Oversized escutcheon plates and gaskets available for larger openings



## ORDERING INFORMATION

Catalog Number	UPC Number	Size	(UOM) Qty.	Case Qty.	Weight (Each)
FS100	730573201008	1" (25 mm) sleeve (includes escutcheon plates, gaskets, and putty)	1	6	1.02 lbs (0.46 kg)
FS200	730573202005	2" (51 mm) sleeve (includes escutcheon plates, gaskets, and putty)	1	6	2.29 lbs (1.04 kg)
FS400	730573204009	4" (102 mm) sleeve (includes escutcheon plates, gaskets, and putty)	1	6	6.32 lbs (2.87 kg)
FS201	730573202012	2" (51 mm) sleeve (includes oversized escutcheon plates, gaskets, and putty)	1	N/A	2.73 lbs (1.24 kg)
FS401	730573204016	4" (102 mm) sleeve (includes oversized escutcheon plates, gaskets, and putty)	1	N/A	7.59 lbs (3.44 kg)

TEST STANDARDS: ASTM E814 (UL1479), CAN/ULC-S115



1-800-992-1180  
stifirestop.com



Click here to learn more about



ZST13544 11121