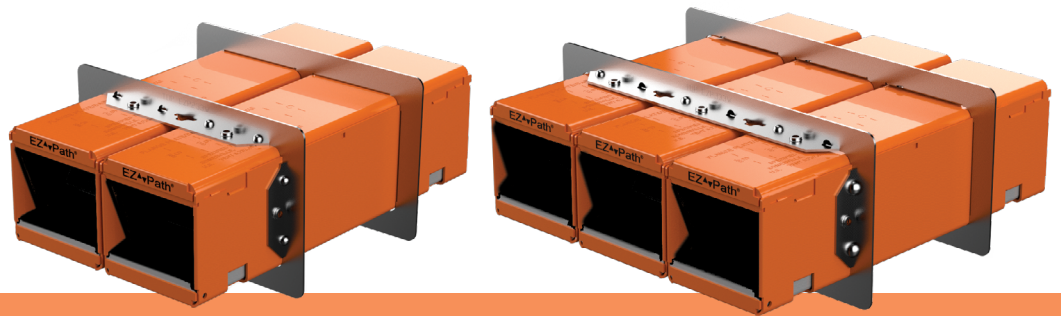
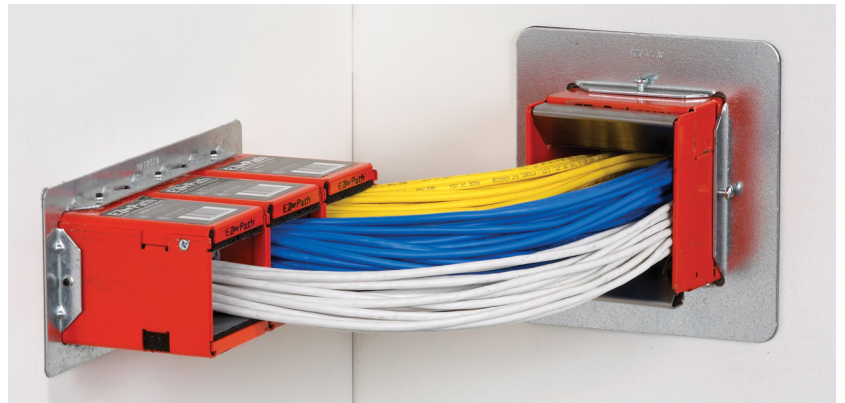


EZ Path® Series 33 Two and Three Gang Plate Kits

The EZ Path® Series 33 Two and Three Gang Plate kits allow for installation of multiple Series 33 Devices in a single opening. Gang plates install on both sides of the assembly holding the devices in place fulfilling NEC rigid support requirements while attaching devices together using integrated hex head slotted screws. Each gang plate is offered as a complete kit including devices and wall labels or stand-alone without devices. .

Features & Benefits

- Tested in Concrete Walls & Floors, Gypsum Board Walls, and Wool floor/ceiling assemblies
- Combines with other Series 33 Accessories
- Solid galvanized steel plate for new construction applications



ORDERING INFORMATION

| Catalog Number | UPC Number | Description | (UOM) Qty. | Case Qty. | Weight (Each) |
|----------------|--------------|---|------------|-----------|--------------------|
| EZDP233GK | 730573002353 | Two-Gang Kit – Two (2) devices with two-gang plates and labels | 1 | 1 | 6.48 lbs (2.94 kg) |
| EZP233W | 730573002339 | Two-Gang Wall Plates with labels | 1 | 1 | 0.79 lbs (0.36 kg) |
| EZDP333GK | 730573903353 | Three-Gang Kit – Three (3) devices with three-gang plates and labels | 1 | 1 | 9.10 lbs (4.13 kg) |
| EZP333W | 730573003336 | Three-Gang Wall Plates and labels | 1 | 1 | 1.03 lbs (0.47 kg) |

TEST STANDARDS: ASTM E814 (UL 1479), CAN/ULC-S115

