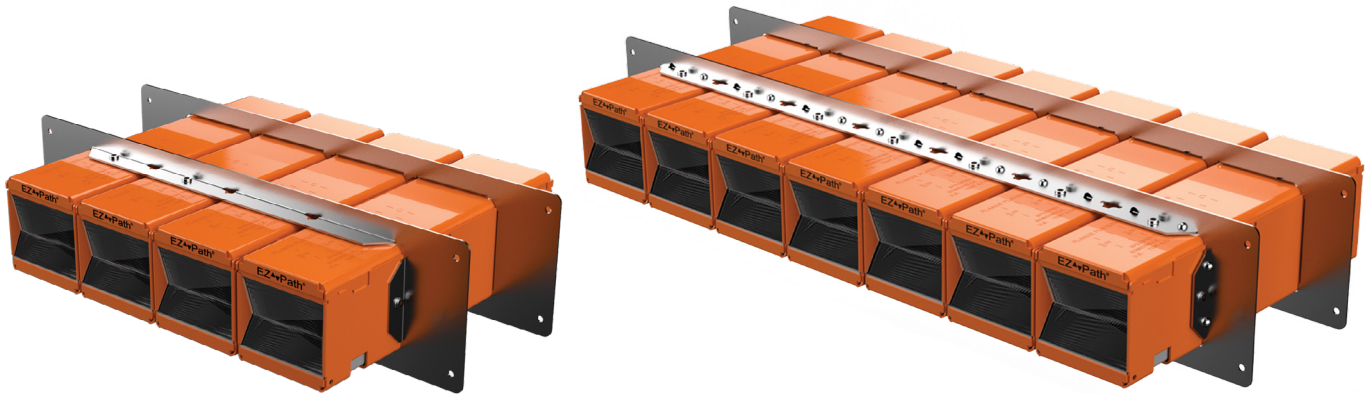


EZ Path® Series 33 Four and Seven Gang Plate Kits

The EZ Path® Series 33 Four and Seven Gang Plate kits allow for installation of multiple Series 33 Devices in a single opening. In gypsum board construction, the four and seven gang plates tie into vertical stud framing, protecting the wall by transferring the aggregate weight of devices and cabling off the fragile gypsum board. These plates can also be installed directly to stud framing prior to gypsum board installation, reserving space within crowded walls.

Features & Benefits

- Tested in Concrete and Gypsum Board Walls
- Ties into stud framing protecting gypsum board layers
- Can be installed direct to stud framing pre-gypsum board
- Solid galvanized steel plate for new construction applications



ORDERING INFORMATION

Catalog Number	UPC Number	Description	(UOM) Qty.	Case Qty.	Weight (Each)
EZDP433GK	730573004357	Four-Gang Kit - Four (4) devices with four-gang plates and labels	1	1	13.06 lbs (5.92 kg)
EZP433W	730573004333	Four-Gang Wall Plates and labels	1	1	1.73 lbs (0.78 kg)
EZDP733GK	730573007358	Seven-Gang Kit - Seven (7) devices with seven-gang plates and labels	1	1	21.82 lbs (9.90 kg)
EZP733W	730573007334	Seven-Gang Wall Plates and labels	1	1	2.66 lbs (1.21 kg)

TEST STANDARDS: ASTM E814 (UL 1479), CAN/ULC-S115

