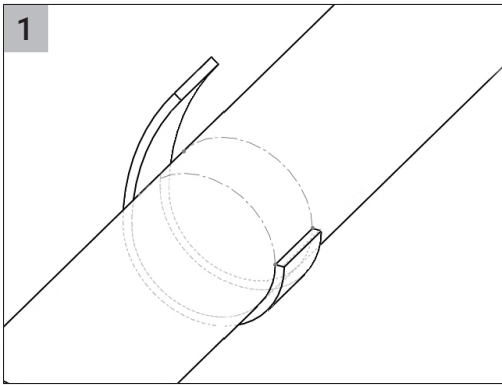
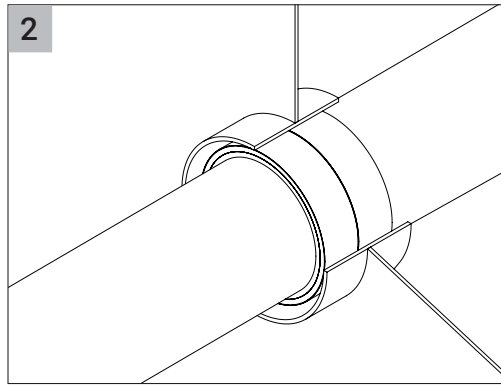


**M-PACT**<sup>®</sup>  
MARINE PIPE AND CABLE TRANSIT

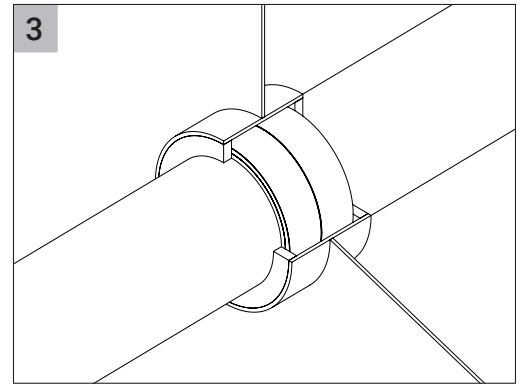
**MPACT**<sup>®</sup> Tuck-In



1  
Install two layers of MWS Marine Wrap Strip around the pipe on both sides of sleeve.



2  
Adjust MWS Marine Wrap Strip positioning such that they are recessed min 12.7 mm from each sleeve end.



3  
Apply MFS Marine Firestop Sealant over MWS Marine Wrap Strip on both sides of sleeve to a min 12.7 mm thickness, flush with sleeve ends.

Tips:

- All surfaces to be clean, sound, dry, frost-free and free of bond-breaking contaminants and loose materials.
- Wrap strip may be secured around pipe using tape.
- Smooth sealant surface using a trowel, tooling knife, wet low lint rag, or by hand with soapy water (and latex gloves, if preferred).
- For CPVC pipes, an alternative sealant or wrap strip positioning may be necessary. Please refer to Type Approval Certificates for installation options.

Note: Refer to Type Approval Certificates for approved penetrant types/sizes, sleeve dimensions, insulation requirements, etc.