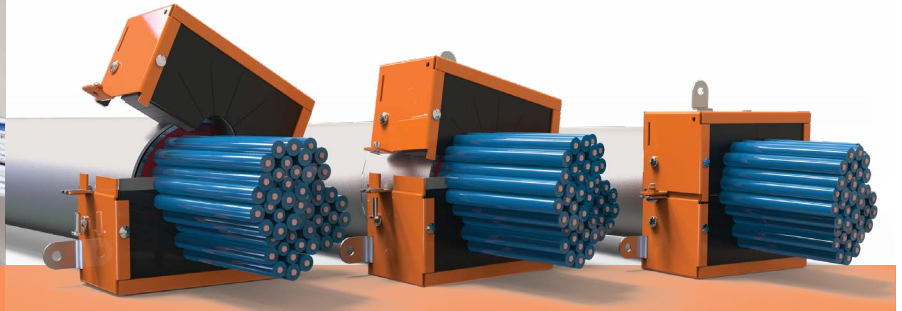
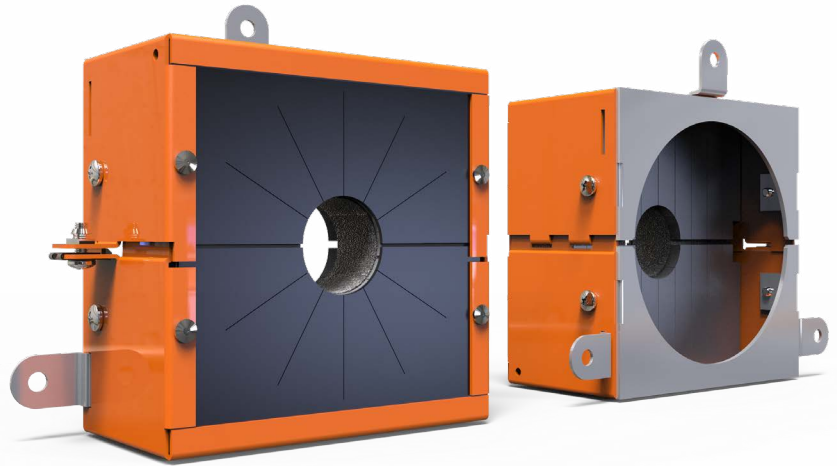


EZ Path[®] Retrofit Device

Overfilled cable sleeves are the bane of every facilities team, bring these deficient openings back into code compliance with the EZ Path Retrofit Device. Its two-part clam shell design installs around projecting sleeves and cable bundles restoring fire and smoke leakage performance. The EZ Path Retrofit Device quickly and easily retrofits sleeves of up to 100% visual fill restoring fire performance without the need for additional firestop products.

Features & Benefits

- Easy to install
- No additional firestopping required
- Sized for 2 in and 4 in trade size EMT or rigid steel conduit sleeves or stubs
- 50% to 100% cable fill
- Works with extended or flush sleeves
- Bring overfilled sleeves back into code compliance



ORDERING INFORMATION

Catalog Number	UPC Number	Description	(UOM) Qty.	Case Qty.	Weight (Each)
EZDR200	730573002001	Retrofit Device for 2" (2-3/16" or 2-3/8" O.D.) Sleeves, One Pair (2)	1	4	2.83 lbs (1.28 kg)
EZDR400	730573004005	Retrofit Device for 4" (4-1/2" O.D.) Sleeves, One Pair (2)	1	4	4.81 lbs (2.18 kg)
EZPR150	730573002018	1-1/2" Adapter Plate for EZDR200, One Pair (2)	1	1	0.75 lbs (0.34 kg)
EZPR300	730573004012	3" Adapter Plate for EZDR400, One Pair (2)	1	1	1.25 lbs (0.57 kg)

TEST STANDARDS: ASTM E814 (UL 1479), CAN/ULC-S115

