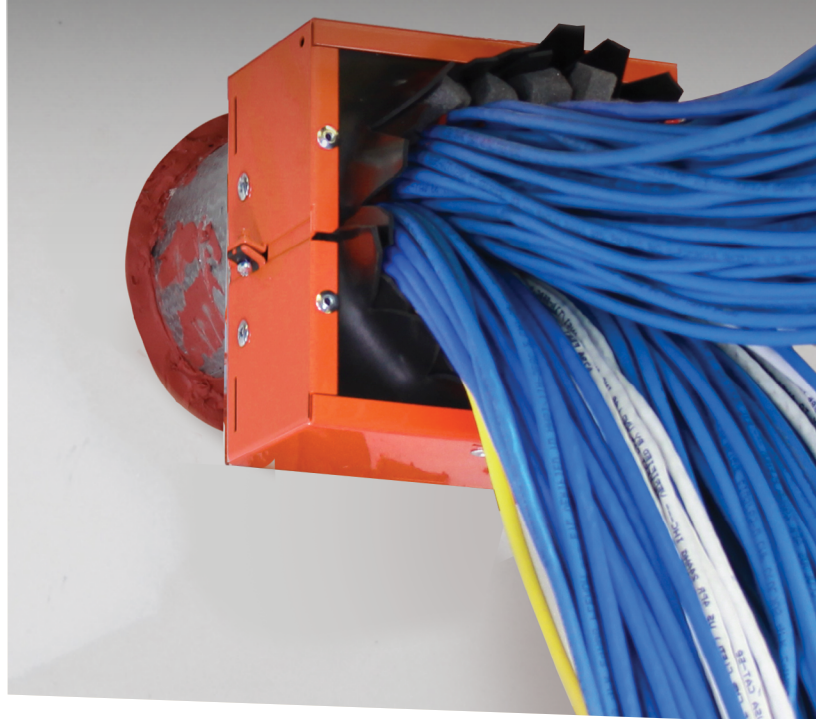


Problem

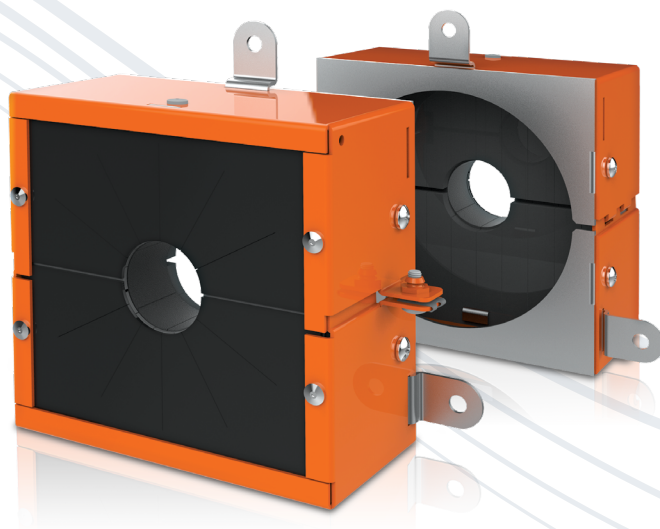


Solution



**EZ-Path<sup>®</sup>**  
Retrofit Device

**Instant Compliance**  
for Overfilled Sleeves



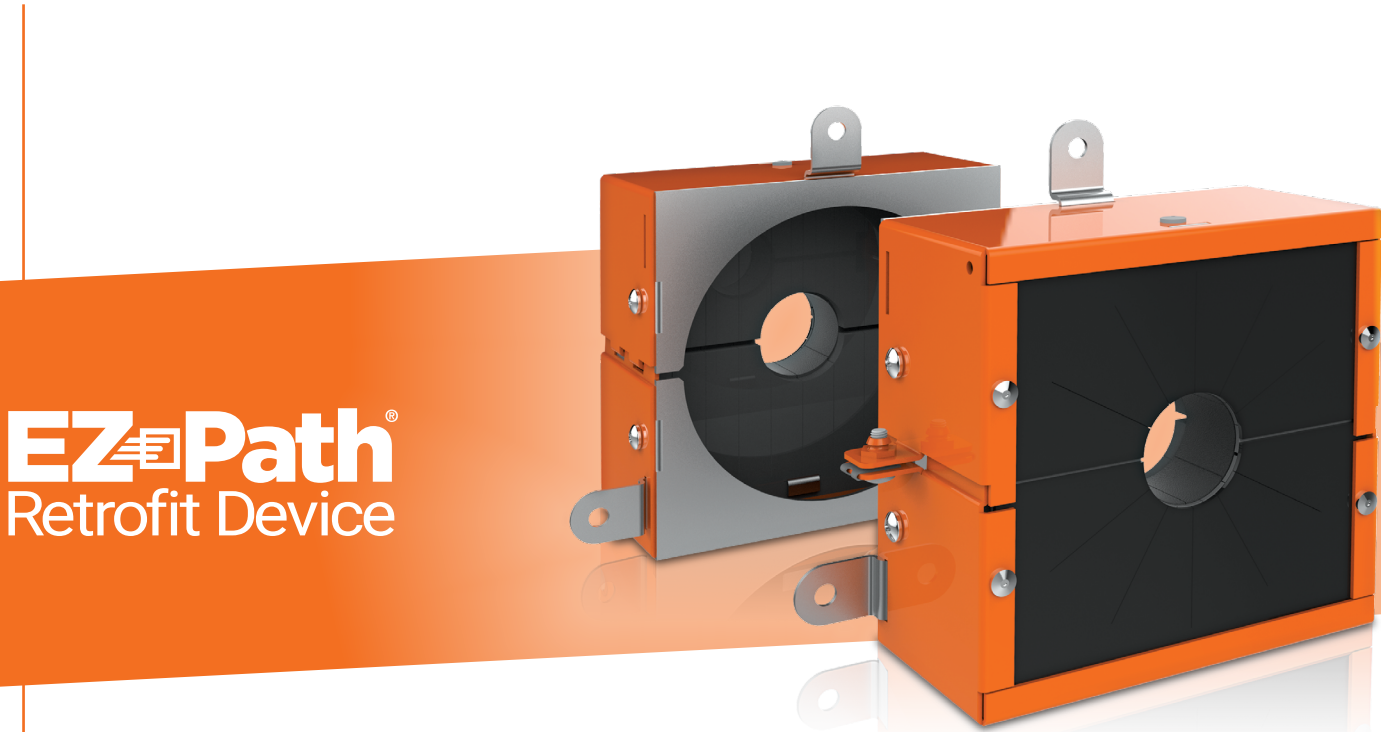
**Specified  
Technologies Inc.**  
Firestop, Smoke, & Sound Solutions





Don't stress out  
about deficient overfilled sleeves\*

\*For use with sleeves from 50% to 100% visual fill.



Shown with optional mounting hardware  
included for flush mount installations.

Restore compliance instantly with  
EZ Path® Retrofit Device

Compliance is as easy as

1

WRAP

Device wraps around  
existing condition

2

SECURE

Intumescent foam  
surrounds cables

3

TIGHTEN

Compliance  
is restored

Single sleeves

Multiple sleeves

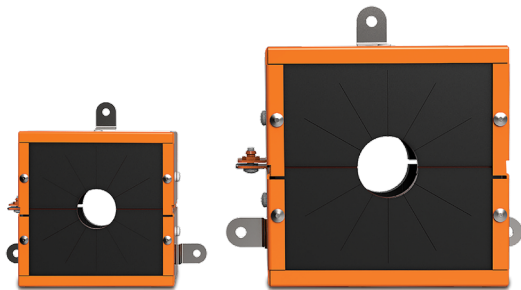
Flush mount sleeves

Rapid Remediation

The EZ Path® Retrofit Device is engineered for quick and easy installation. It instantly transforms overfilled sleeves to compliance in seconds.

The two-piece split device simply wraps around the cable bundle and extended sleeve. It can even accommodate an existing conduit bushing.

Once the device is secured, existing firestop materials can be left in place and the cable sleeve can remain active. Cables can be added up to 100% visual fill or removed down to 50% visual fill while still maintaining ongoing compliance.



EZDR200

EZDR400

Available in two convenient sizes to fit 2" and 4" trade size EMT or rigid metallic conduit sleeves.



Firestopping intumescent built right in

- Easy to install and nothing to maintain
- No additional firestopping required
- For use with 50%-100% cable fill
- Works with extended or flush mount sleeves
- Attaches directly to sleeve or use optional mounting tabs included for barrier attachment
- Sold in pairs for installation on both sides of a wall
- Also approved for floor applications

### ORDERING INFORMATION

Catalog Number	UPC Number	Description	(UOM) Qty.	Case Qty.	Weight (Each)
EZDR200	730573002001	Retrofit Device for 2" (2-3/16" or 2-3/8" O.D.) Sleeves, One Pair (2)	1	4	2.83 lbs (1.28 kg)
EZDR400	730573004005	Retrofit Device for 4" (4-1/2" O.D.) Sleeves, One Pair (2)	1	4	4.81 lbs (2.18 kg)
EZPR150	730573002018	1-1/2" Adapter Plate for EZDR200, One Pair (2)	1	1	0.75 lbs (0.34 kg)
EZPR300	730573004012	3" Adapter Plate for EZDR400, One Pair (2)	1	1	1.25 lbs (0.57 kg)



TEST STANDARDS: ASTM E814 (UL 1479), CAN/ULC-S115

Orange  
Color

Permanent  
Solution



Click or scan to learn more about  
**EZ Path<sup>®</sup> Retrofit Device**

Visit [ezpath.com](http://ezpath.com) to learn more  
about the entire EZ Path<sup>®</sup> family of products

**We engineer peace of mind.**

1 (800) 992-1180 [stifirestop.com](http://stifirestop.com)

**Specified Technologies Inc.**  
Firestop, Smoke, & Sound Solutions