

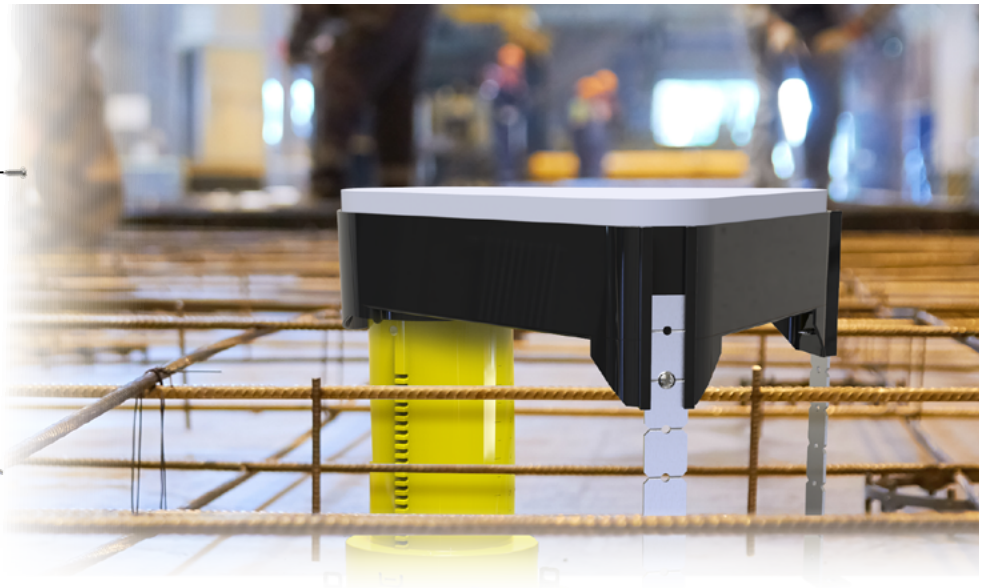
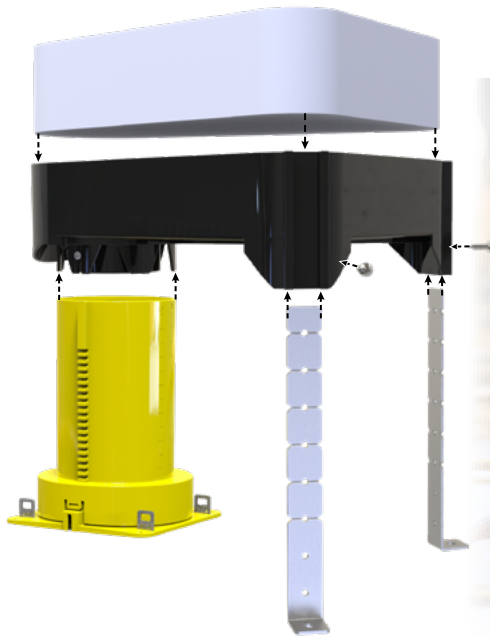
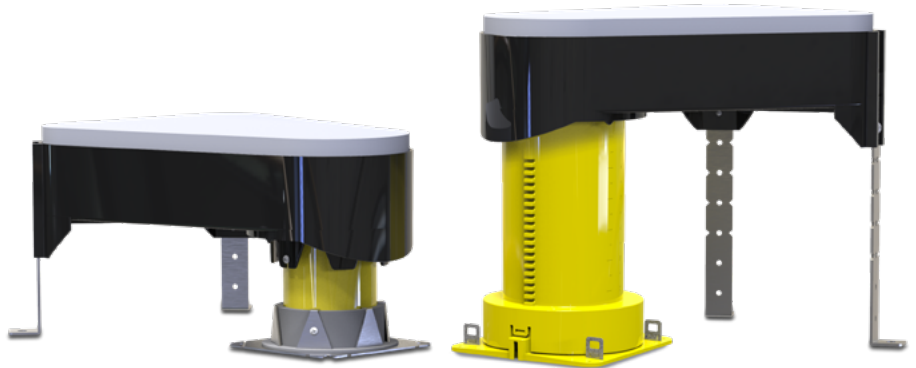


Cast-In Tub Box

The Cast-In Tub Box creates an open space for plumbing piping on the top surface of your concrete floor. The Tub Box combines with the 2 in (50.8 mm) & 3 (76.2 mm) in Cast-In Device and eliminates the need for core drilling or additional firestopping.

Features & Benefits

- Partners with 2 in (50.8 mm) & 3 (76.2 mm) SpecSeal® Cast-In Device
- Easily installs directly to concrete forms
- Installs in concrete floors as thin as 4-1/2 in (114.3 mm)



ORDERING INFORMATION

Catalog Number	UPC Number	Description	(UOM) Qty.	Case Qty.	Weight (Each)
CD23T	730573342404	Tub Box Kit for 2" (50.8 mm) & 3" (76.2 mm) Cast-In Devices, Device not Included	1	1	1.88 lbs (0.85 kg)
CD201T	730573342091	Tub Box Kit for min 4.5" (114 mm) thick concrete floors with 2" (50.8 mm) Device	1	1	3.62 lbs (1.64 kg)

TEST STANDARDS*: ASTM E814 (UL 1479), CAN/ULC-S115
 *When installed in conjunction with a SpecSeal® Cast-In Firestop Device



Firestop, Smoke, & Sound Solutions



Click here to learn more about

